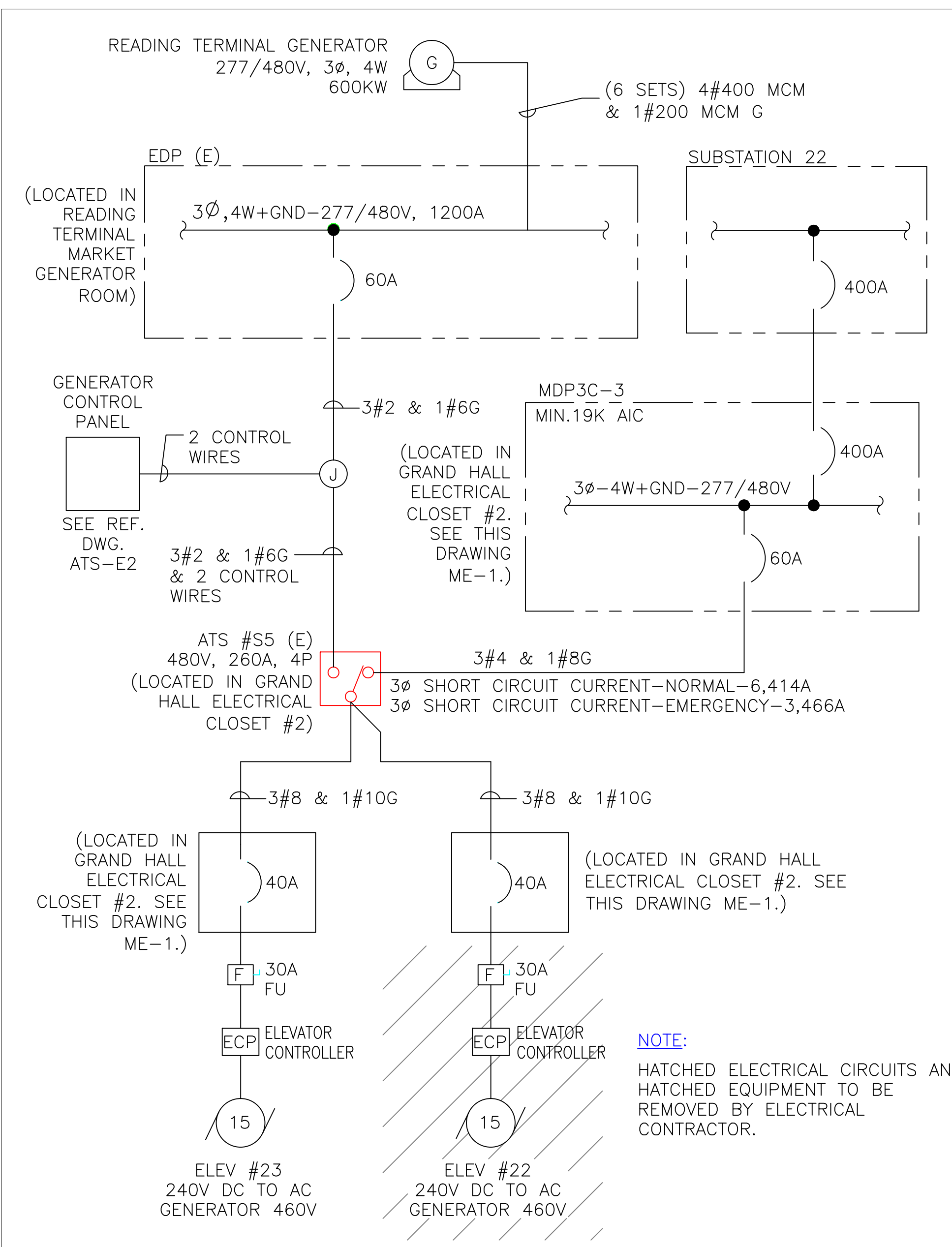
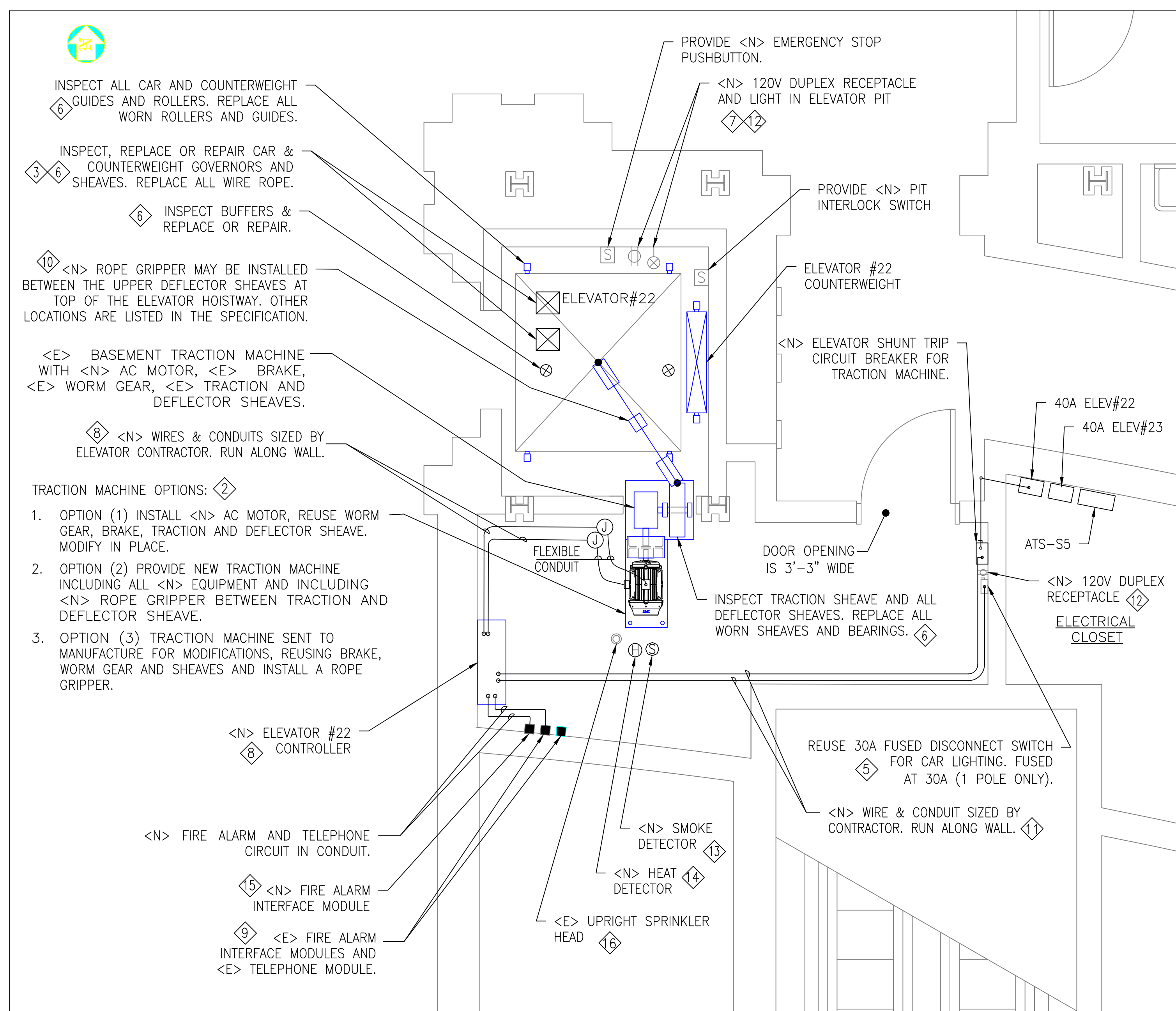


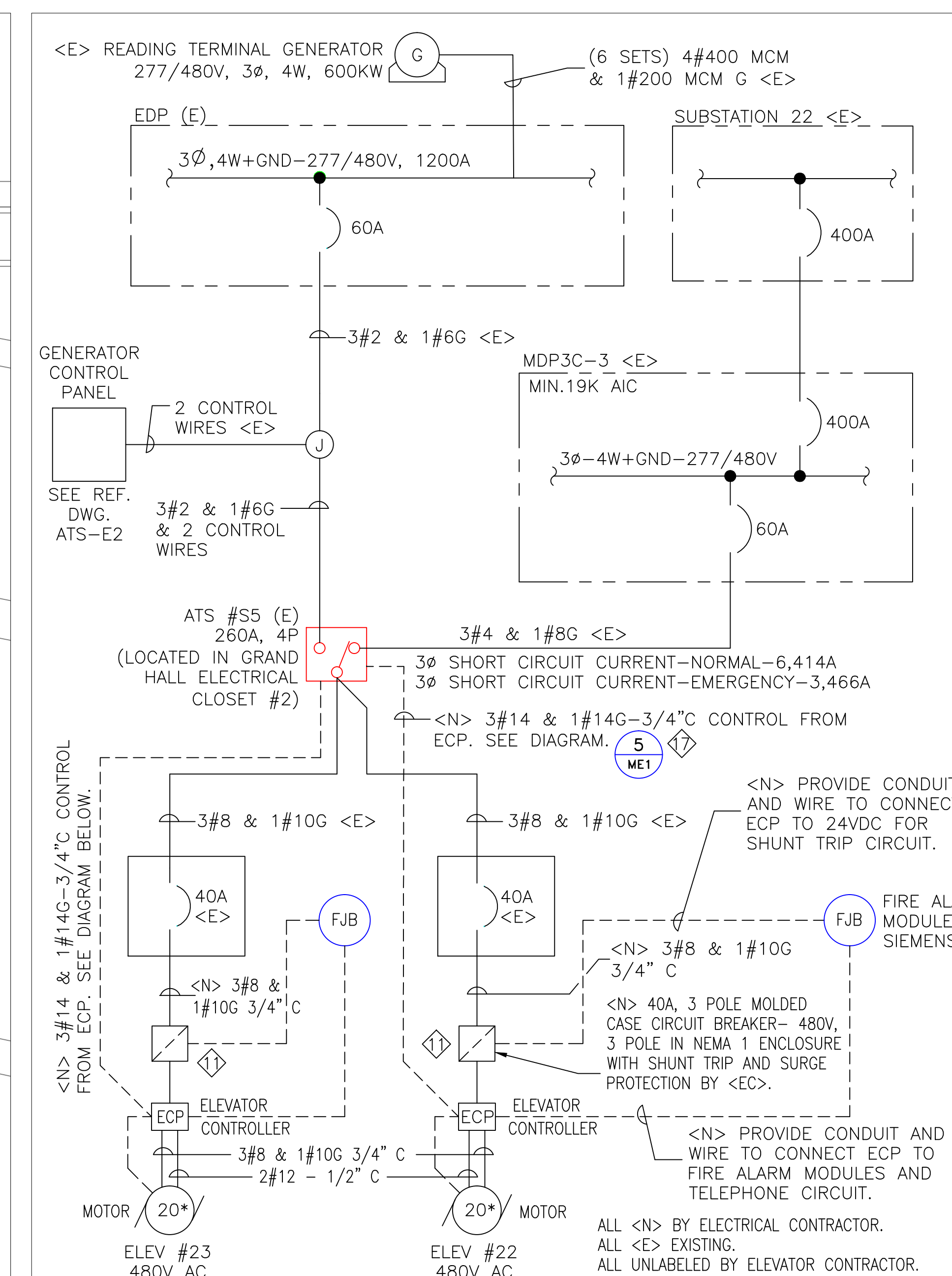
**1 ELEVATOR #22 AREA - REMOVALS**  
SCALE: 3/8" = 1' - 0"



**3 ELEVATOR #22 SINGLE LINE DIAGRAM - EXISTING**  
SCALE: NTS



**2 ELEVATOR #22 AREA - INSTALLATION**  
SCALE: 3/8" = 1' - 0"



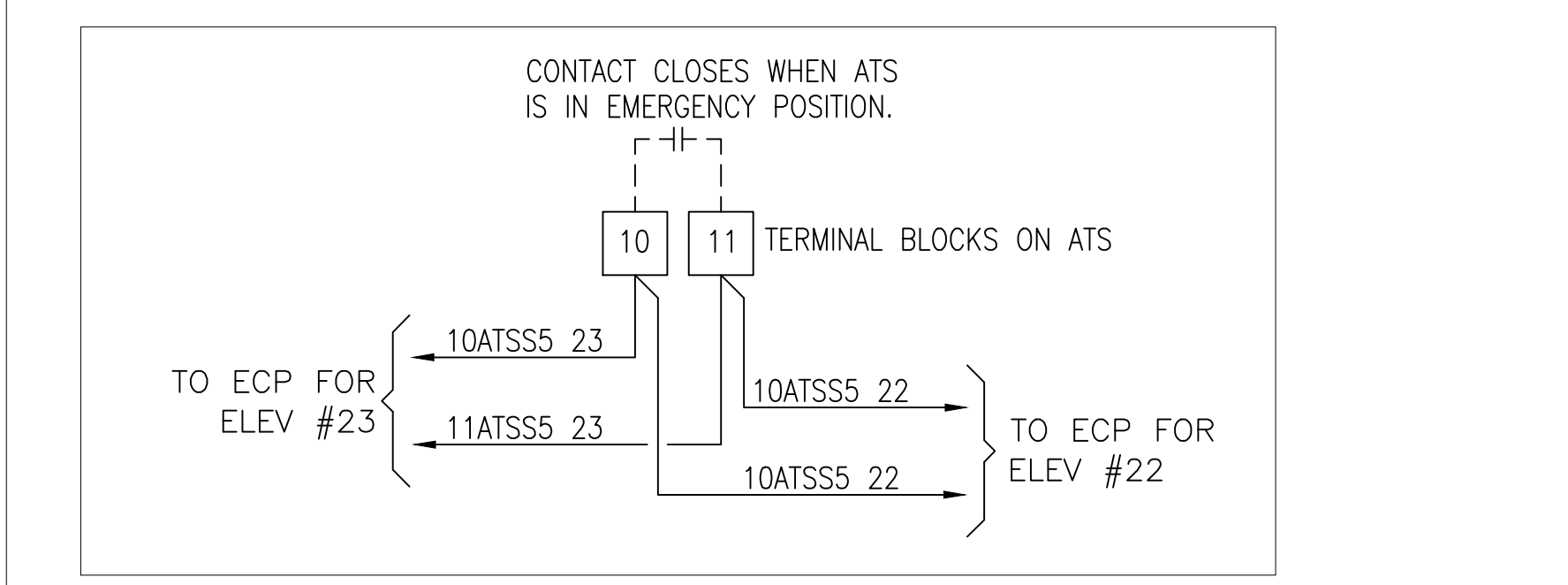
**4 ELEVATOR #22 SINGLE LINE DIAGRAM - NEW**  
SCALE: NTS

**GENERAL NOTES**

- ELEVATOR, ELECTRICAL AND FIRE ALARM CONTRACTORS SHALL PROVIDE ALL WORK REQUIRED BY THE AUTHORITY HAVING JURISDICTION TO SATISFY ALL EXISTING CODES AND STANDARDS ASSOCIATED WITH TRACTION ELEVATOR INSTALLATIONS AND MODERNIZATIONS.
- ELEVATOR MODERNIZATION OPTIONS:
  - OPTION (1) MODERNIZE ELEVATOR PER SPECIFICATION AND DETAILS 2-ME1 AND 4-ME1. ALSO MODIFY TRACTION MACHINE BY REUSING EXISTING WORM GEAR AND MODIFYING BRAKE AND PROVIDING A NEW AC MOTOR.
  - OPTION (2) MODERNIZE ELEVATOR PER SPECIFICATION AND DETAILS 2-ME1 AND 4-ME1. ALSO PROVIDE <N> TRACTION MACHINE INCLUDING <N> MOTOR, <N> BRAKE, <N> ROPE GRIPPER BETWEEN TRACTION AND DEFLECTOR SHEAVE, <N> WORM GEAR, <N> TRACTION SHEAVE AND <N> DEFLECTOR SHEAVE.
  - OPTION (3) MODERNIZE ELEVATOR PER SPECIFICATION AND DETAILS 2-ME1 AND 4-ME1. ALSO TRACTION MACHINE TO BE MODIFIED BY MANUFACTURE WITH <N> MOTOR, <E> BRAKE, <N> ROPE GRIPPER BETWEEN TRACTION AND DEFLECTOR SHEAVE, <E> WORM GEAR, <E> TRACTION SHEAVE AND <E> DEFLECTOR SHEAVE.
- REFER TO ELEVATOR SPECIFICATION.

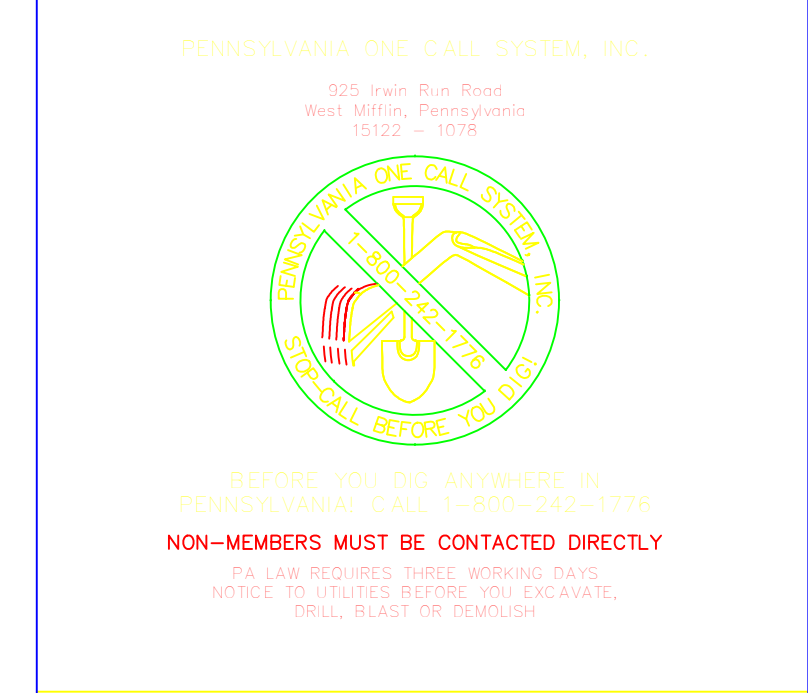
**SHEET NOTES:**

- EQUIPMENT TO BE REMOVED BY THE ELEVATOR MODERNIZATION CONTRACTOR.
- HOIST MACHINE INSTALLATION OPTIONS:
  - OPTION (1)- MODIFY BASE TO ACCEPT NEW AC MOTOR AND NEW MOTOR FLEXIBLE COUPLING. INSTALL <N> AC MOTOR, <N> FLEXIBLE COUPLING AND ALIGN MOTOR AND COUPLING TO <E> BRAKE. REPLACE BRAKE SHOES AND INSTALL BRAKE ON OFF SWITCHES.
  - OPTION (2)- PROVIDE <N> TRACTION MACHINE WITH ALL <N> EQUIPMENT INCLUDING <N> ROPE GRIPPER BETWEEN TRACTION AND DEFLECTOR SHEAVE.
  - OPTION (3)- REMOVE HOIST MACHINE AND SEND TO MANUFACTURE FOR MODIFICATION PER OPTION (1) WITH ROPE GRIPPER.
- INSTALL NEW WIRE ROPE FROM ELEVATOR CAR VIA BASEMENT TRACTION DRIVE TO COUNTER WEIGHT. INSTALL ALL NEW ROPE FITTINGS. ALSO INSTALL NEW GOVERNOR ROPES. SEE ELEVATOR SPECIFICATION FOR ROPE REQUIREMENTS.
- REMOVE <E> ELEVATOR FUSIBLE DISCONNECT SWITCH FOR <E> MOTOR AND DC CONTROLLER. POWER SOURCE WILL BE RE-USED AS THE POWER SOURCE FOR THE NEW ELEVATOR SHUNT TRIP CIRCUIT BREAKER.
- IDENTIFY POWER SOURCE FOR THE CAR LIGHTING. CONFIRM THAT THE POWER SOURCE IS CONNECTED TO THE SITE'S STANDBY POWER SYSTEM. ADVISE OWNER AND OWNER'S ENGINEER OF FINDINGS.
- INSPECT, SERVICE, REPAIR OR REPLACE IF NEEDED CAR AND COUNTERWEIGHT SPEED GOVERNORS, BUFFERS, GUIDES, ROLLERS AND OTHER EQUIPMENT SPECIFIES IN ELEVATOR SPECIFICATION.
- IDENTIFY POWER SOURCES FOR THE MACHINE ROOM, PIT LIGHT AND RECEPTACLE. CONFIRM THAT THE POWER SOURCE IS CONNECTED TO THE SITE'S STANDBY POWER SYSTEM. ADVISE OWNER AND OWNER'S ENGINEER OF FINDINGS. SEE ELEVATOR SPECIFICATION.
- INSTALL NEW ELEVATOR CONTROLLER TO VARY MOTOR SPEED AND CONTROL ELEVATOR VIA CAR AND LANDING CONTROL PANELS. SEE ELEVATOR SPECIFICATION FOR CONTROLLER REQUIREMENT.
- EXISTING OR UPDATED FIRE ALARM INTERFACE MODULES AND TELEPHONE CIRCUITS SHALL BE INTERCONNECTED/INTEGRATED WITH THE NEW ELEVATOR MOTOR CONTROL PANEL. FIRE ALARM AND TELEPHONE CONTRACTOR SHALL COORDINATE THIS WORK WITH THE ELEVATOR CONTRACTOR.
- PROVIDE A HOIST ROPE GRIPPER MEETING CURRENT ELEVATOR CODE. THIS SHOULD BE INSTALLED IN A LOCATION CONVENIENT FOR MAINTENANCE. LOCATION OF THE ROPE GRIPPER IS DEFINED IN THE ELEVATOR SPECIFICATION.
- PROVIDE NEW 480V, 3 POLE MOLDED CASE CIRCUIT BREAKER SIZED FOR THE ECP WITH SHUNT TRIP AND AUXILIARY CONTACT AND NEW POWER CIRCUITS TO 40 AMP CIRCUIT BREAKER AND TO NEW ECP.
- REUSE EXISTING OR PROVIDE NEW DEDICATED 20 AMP, 120 VOLT, BRANCH CIRCUIT FROM THE NORMAL/EMERGENCY PANELBOARD ELP5C-3A IN ROOM 3C14 TO NEW LIGHT SWITCH, LIGHT FIXTURE AND GFCI RECEPTACLE.
- PROVIDE NEW SMOKE DETECTOR IN THE ELEVATOR CONTROL ROOM. CONNECT TO FIRE ALARM SYSTEM FOR USE IN ELEVATOR RECALL FUNCTIONALITY.
- PROVIDE NEW HEAT DETECTOR NEAR THE SPRINKLER HEAD. PROVIDE INTERCONNECTION FOR USE IN SHUNT TRIPPING THE POWER SOURCE TO THE ELEVATOR CONTROL PANEL AFTER ELEVATOR RECALL.
- PROVIDE NEW FIRE ALARM INTERFACE MODULE AND CONNECT TO THE NEW ELEVATOR CONTROL SWITCH'S SHUNT TRIP CIRCUIT.
- SPRINKLER HEADS INSIDE ELEVATOR MACHINE ROOM SHALL REMAIN IN PLACE.
- CONNECT #14 WIRES TO TERMINAL BLOCKS NO.10 AND NO. 11 IN ATC-S5 TO PROVIDE SIGNAL TO ECP THAT THE ATC IS IN EMERGENCY POSITION. LABEL WIRES ON BOTH ENDS SHOWING ELEVATOR# AND ATC#.



**5 ATS - CONTROL CIRCUIT AND CONNECTION DIAGRAM**  
SCALE: NTS

REVISIONS		
ISSUE	DATE	REVISIONS
1	4/12/2022	ISSUED FOR BIDDING

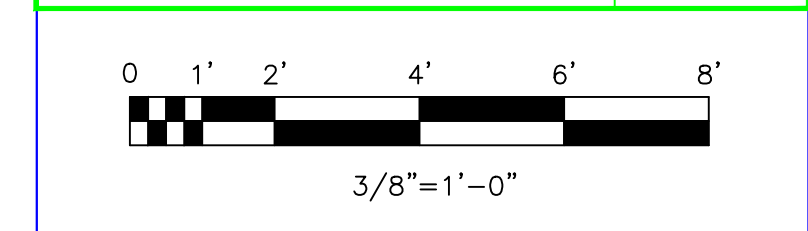


PH ONE CALL NUMBER (FOR DESIGN ONLY) XXXXXXXXXX

DPP PROJECT COORDINATOR: XXXXXXXXXX

SEAL:

<b>MAIDA ENGINEERING INC.</b>		CONSULTING ENGINEERS Philadelphia Office 1315 Walnut Street Suite 804 Philadelphia, PA 19107 (215) 542-8700
PROJECT NO.	E43024	DATE
PROJECT ENG.	ALA	3/31/22
CHECKED	JFM	4/12/22



ECS = ELEVATOR CONTROL SWITCH  
ECP = ELEVATOR CONTROL PANEL  
<E> = EXISTING EQUIPMENT  
<N> = NEW EQUIPMENT  
\* = ELEVATOR MODERNIZATION CO. WILL SIZE MOTOR, WHICH WILL DETERMINE CONDUIT SIZES, ETC.

DPP PROJECT NUMBER: XX-XX-XXXX-XX

PROJECT TITLE: ELEVATORS #22 MODERNIZATIONS

PHASE:

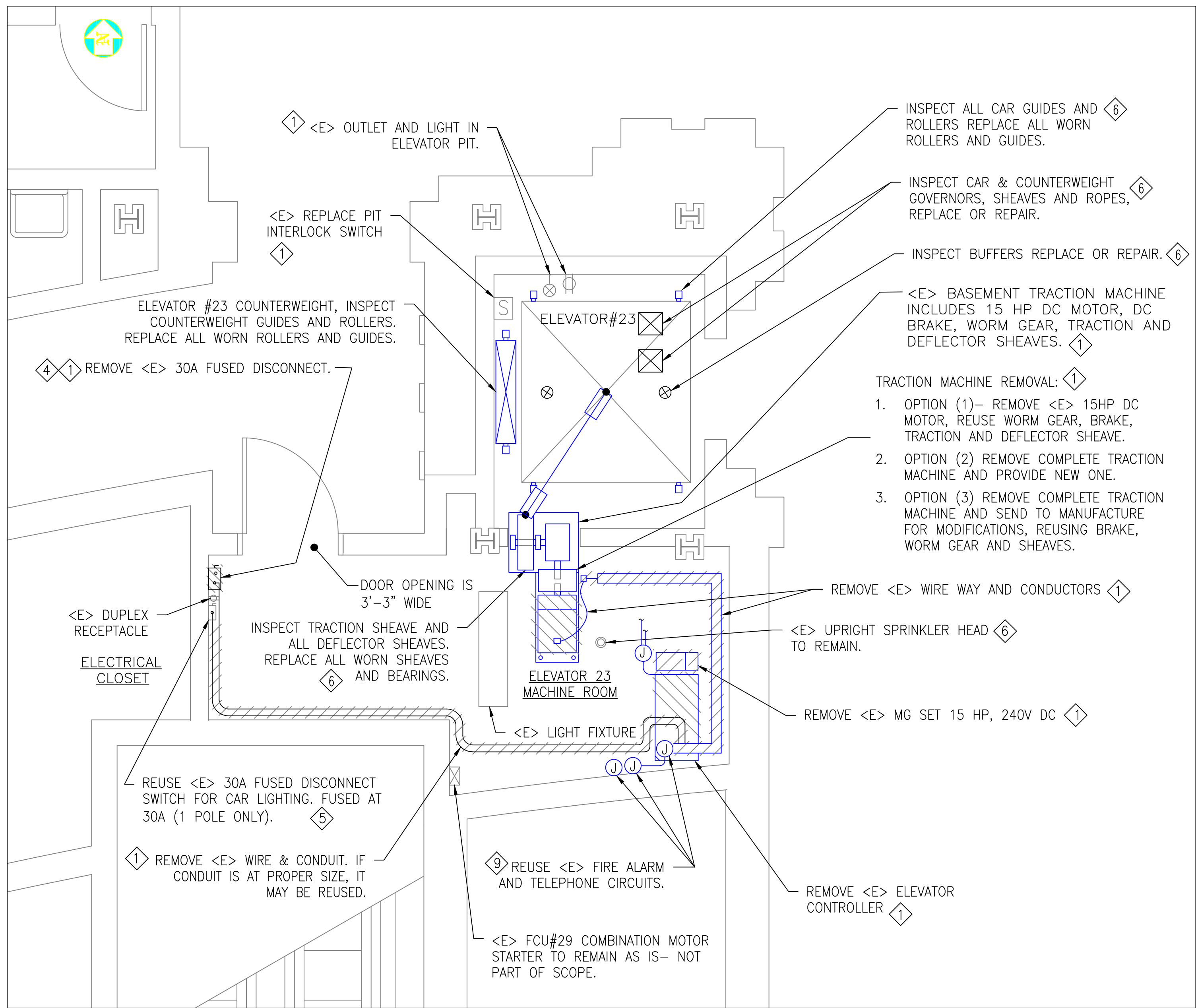
DRAWING TITLE: ELEVATOR #22 MECHANICAL, ELECTRICAL & FIRE ALARM SYSTEM UPGRADES

PACC PROJECT NO.:	XX-XX-XXXX-XX	DRAWING NO.:	
CONSULTANT PROJECT NO.:	E43024	DATE:	03-22-2022
SCALE:	3/8" = 1'-0"	DRAWN BY:	ALA
CHECKED BY:	JFM		

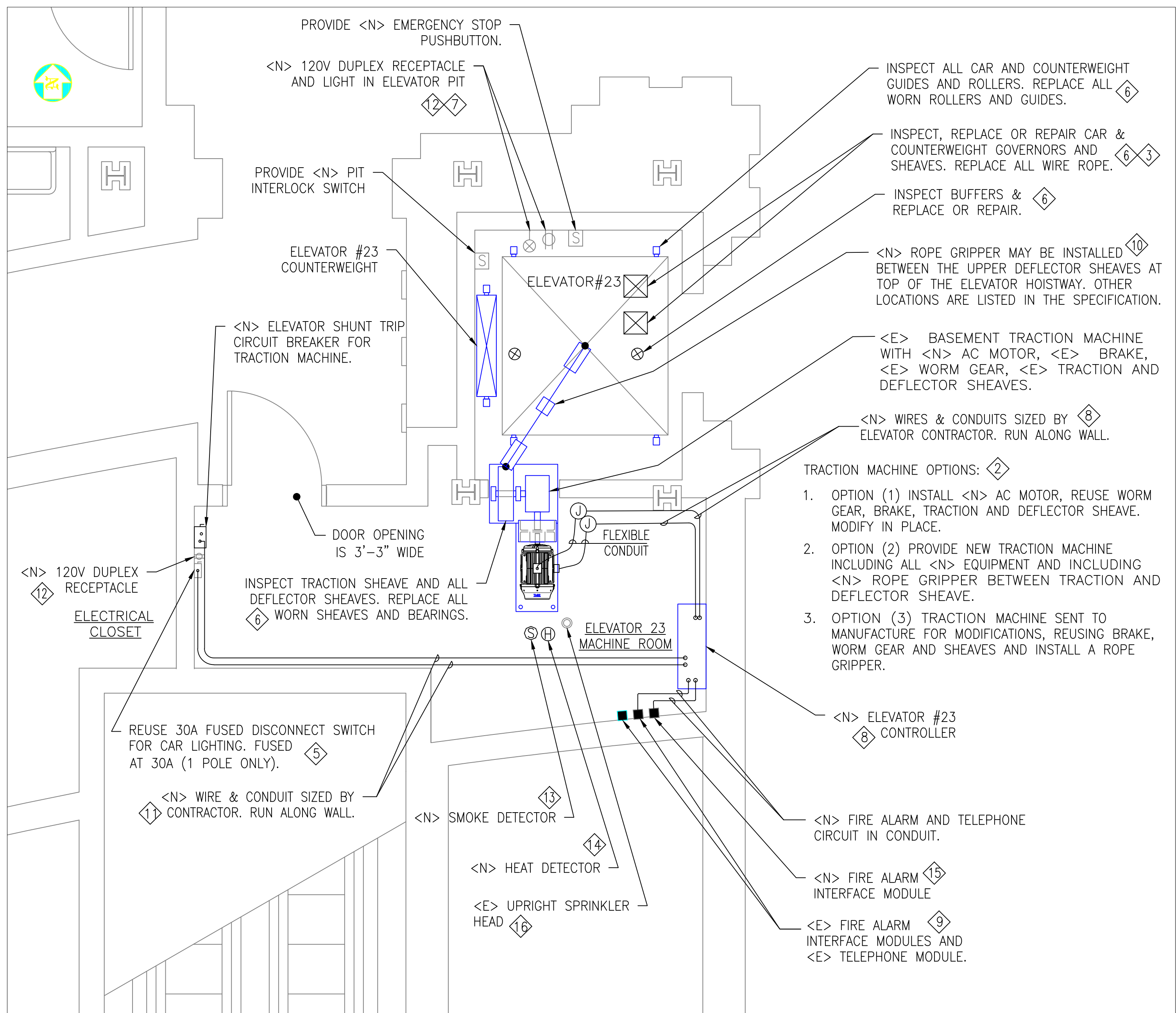
**ME-1**

NOTE: ALL DIMENSIONS AND CONDITIONS SHALL BE VERIFIED BY THE CONTRACTOR AT THE SITE BEFORE PROCEEDING WITH THE WORK.

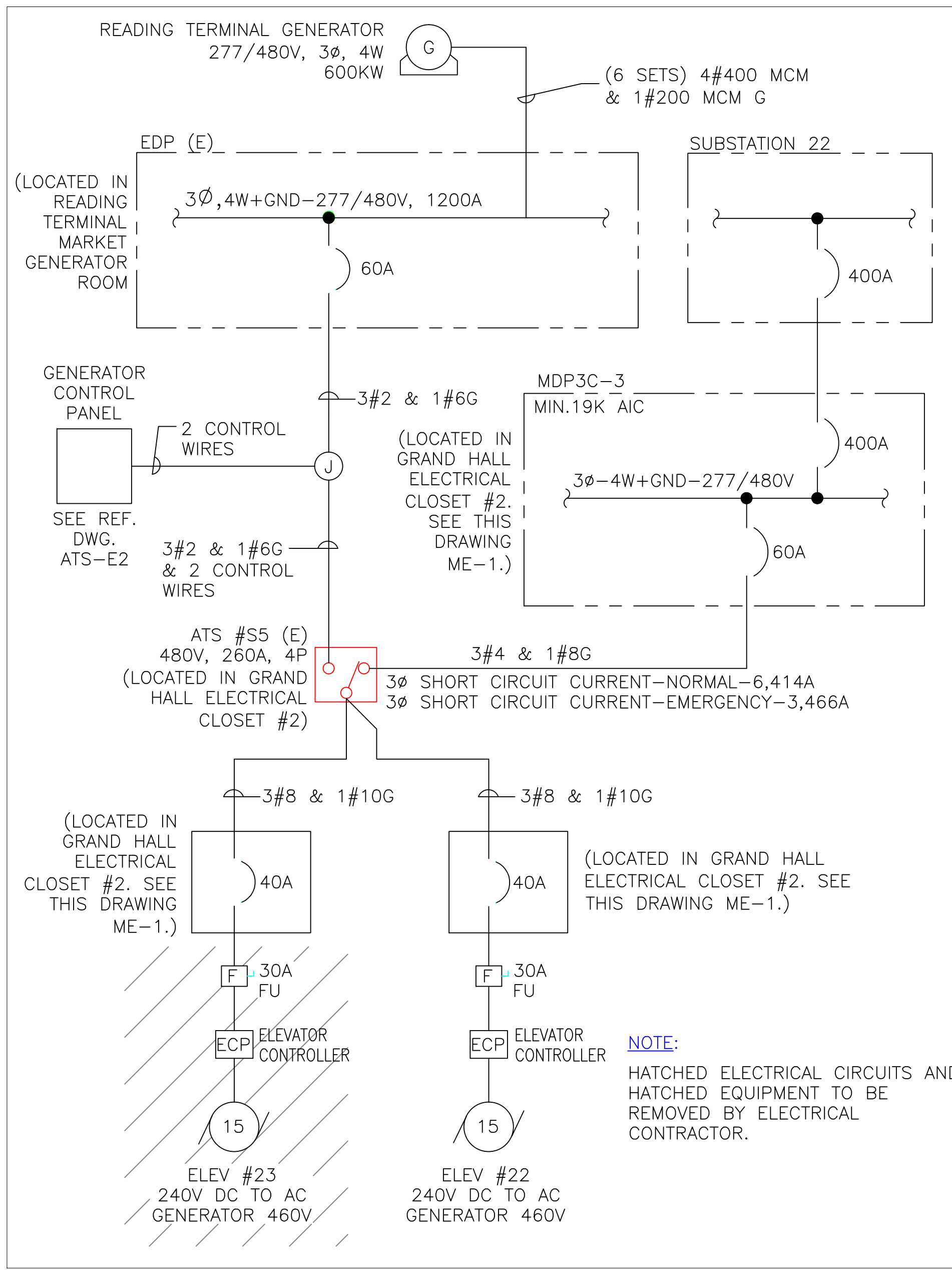




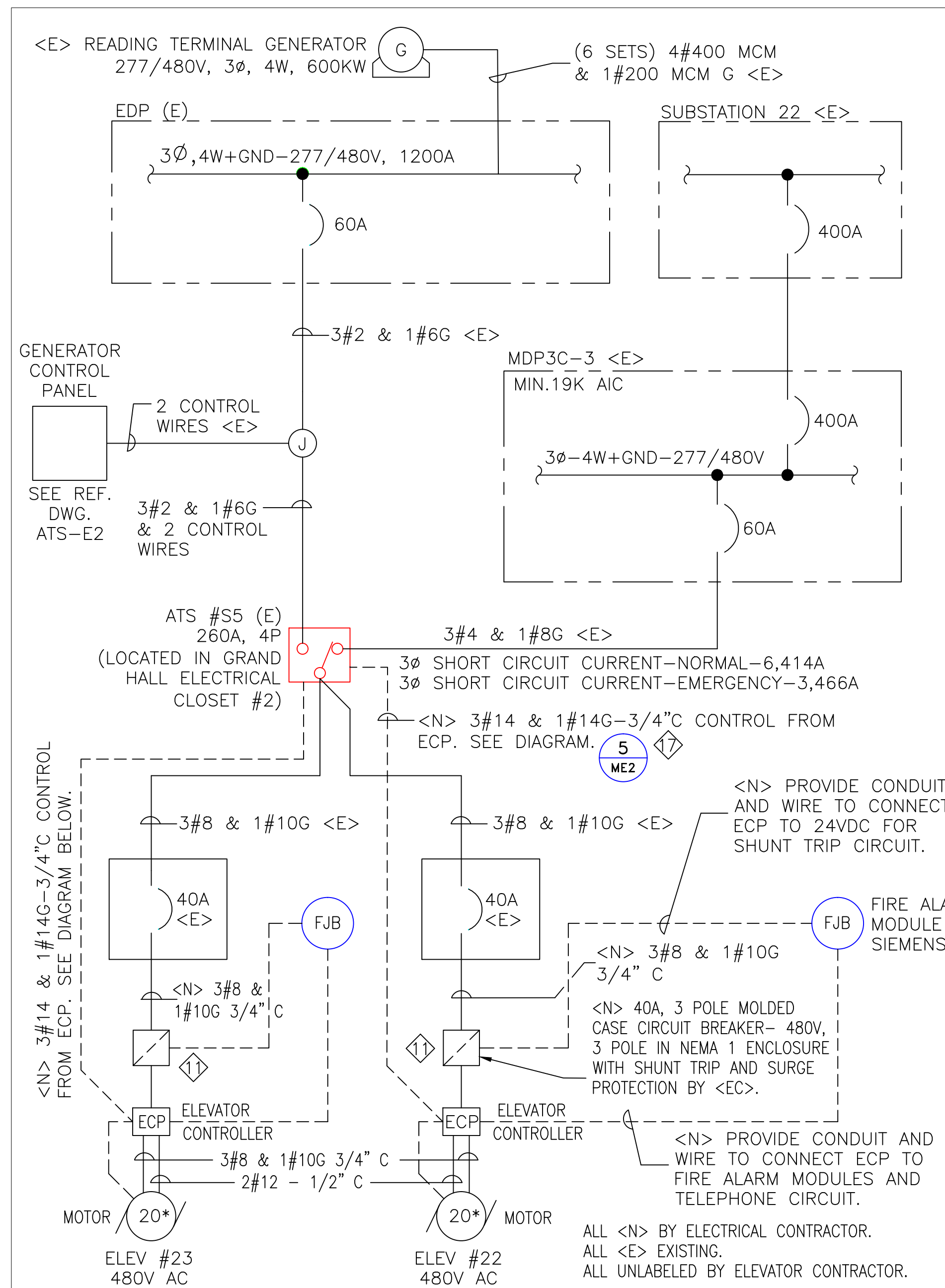
1 ELEVATOR #23 AREA - REMOVALS  
SCALE: 3/8" = 1' - 0"



2 ELEVATOR #23 AREA - INSTALLATION  
SCALE: 3/8" = 1' - 0"



3 ELEVATOR #23 SINGLE LINE DIAGRAM - EXISTING  
SCALE: NTS



4 ELEVATOR #23 SINGLE LINE DIAGRAM - NEW  
SCALE: NTS

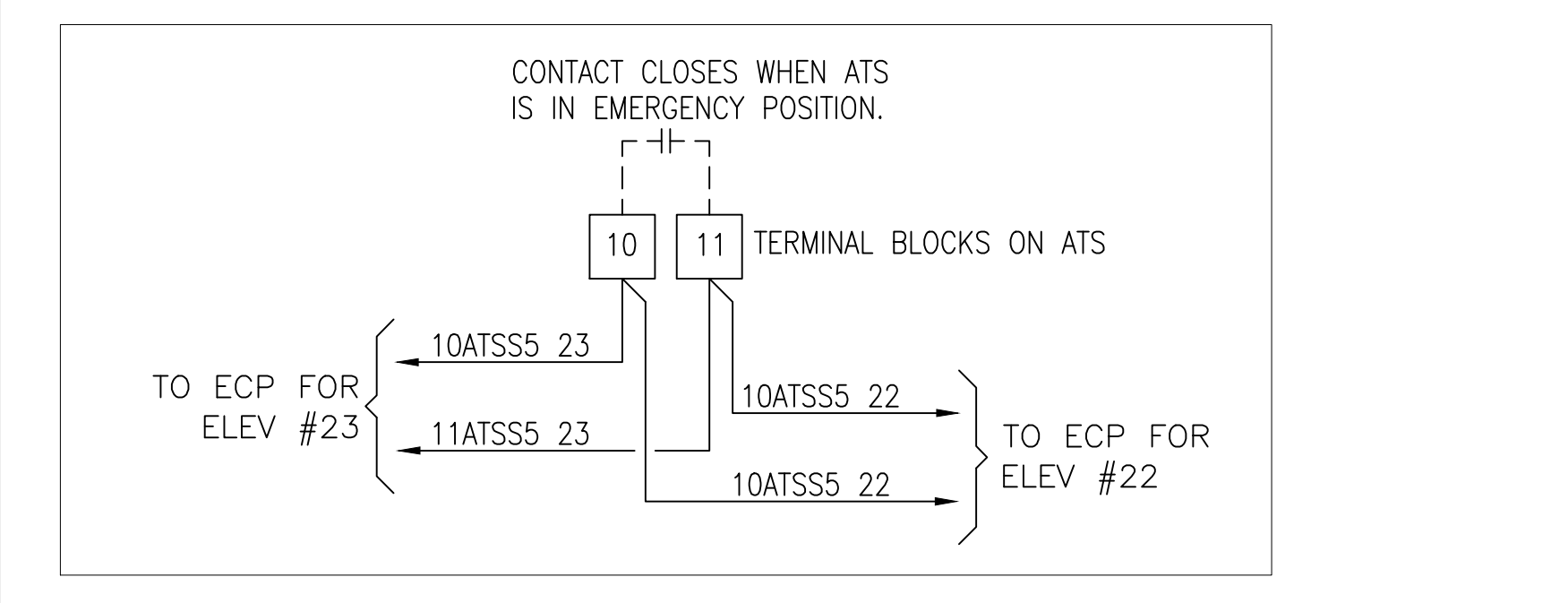
GENERAL NOTES

- ELEVATOR, ELECTRICAL AND FIRE ALARM CONTRACTORS SHALL PROVIDE ALL WORK REQUIRED BY THE AUTHORITY HAVING JURISDICTION TO SATISFY ALL EXISTING CODES AND STANDARDS ASSOCIATED WITH TRACTION ELEVATOR INSTALLATIONS AND MODERNIZATIONS.
- ELEVATOR MODERNIZATION OPTIONS:
  - OPTION (1) MODERNIZE ELEVATOR PER SPECIFICATION AND DETAILS 2-ME2 AND 4-ME2. ALSO MODIFY TRACTION MACHINE BY REUSING EXISTING WORM GEAR AND MODIFYING BRAKE AND PROVIDING A NEW AC MOTOR.
  - OPTION (2) MODERNIZE ELEVATOR PER SPECIFICATION AND DETAILS 2-ME2 AND 4-ME2. ALSO PROVIDE <N> TRACTION MACHINE INCLUDING <N> MOTOR, <N> BRAKE, <N> ROPE GRIPPER BETWEEN TRACTION AND DEFLECTOR SHEAVE, <N> WORM GEAR, <N> TRACTION SHEAVE AND <N> DEFLECTOR SHEAVE.
  - OPTION (3) MODERNIZE ELEVATOR PER SPECIFICATION AND DETAILS 2-ME2 AND 4-ME2. ALSO TRACTION MACHINE TO BE MODIFIED BY MANUFACTURE WITH <N> MOTOR, <E> BRAKE, <N> ROPE GRIPPER BETWEEN TRACTION AND DEFLECTOR SHEAVE, <E> WORM GEAR, <E> TRACTION SHEAVE AND <E> DEFLECTOR SHEAVE.
- REFER TO ELEVATOR SPECIFICATION.

SHEET NOTES:

- EQUIPMENT TO BE REMOVED BY THE ELEVATOR MODERNIZATION CONTRACTOR.
- HOIST MACHINE INSTALLATION OPTIONS:
  - OPTION (1)- MODIFY BASE TO ACCEPT NEW AC MOTOR AND NEW MOTOR FLEXIBLE COUPLING. INSTALL <N> AC MOTOR, <N> FLEXIBLE COUPLING AND ALIGN MOTOR AND COUPLING TO <E> BRAKE. REPLACE BRAKE SHOES AND INSTALL BRAKE ON OFF SWITCHES.
  - OPTION (2)- PROVIDE <N> TRACTION MACHINE WITH ALL <N> EQUIPMENT INCLUDING <N> ROPE GRIPPER BETWEEN TRACTION AND DEFLECTOR SHEAVE.
  - OPTION (3)- REMOVE HOIST MACHINE AND SEND TO MANUFACTURE FOR MODIFICATION PER OPTION (1) WITH ROPE GRIPPER.
- INSTALL NEW WIRE ROPE FROM ELEVATOR CAR VIA BASEMENT TRACTION DRIVE TO COUNTER WEIGHT. INSTALL ALL NEW ROPE FITTINGS. ALSO INSTALL NEW GOVERNOR ROPES. SEE ELEVATOR SPECIFICATION FOR ROPE REQUIREMENTS.
- REMOVE <E> ELEVATOR FUSIBLE DISCONNECT SWITCH FOR <E> MOTOR AND DC CONTROLLER. POWER SOURCE WILL BE RE-USED AS THE POWER SOURCE FOR THE NEW ELEVATOR SHUNT TRIP CIRCUIT BREAKER.
- IDENTIFY POWER SOURCE FOR THE CAR LIGHTING. CONFIRM THAT THE POWER SOURCE IS CONNECTED TO THE SITE'S STANDBY POWER SYSTEM. ADVISE OWNER AND OWNER'S ENGINEER OF FINDINGS.
- INSPECT, SERVICE, REPAIR OR REPLACE IF NEEDED CAR AND COUNTERWEIGHT SPEED GOVERNORS, BUFFERS, GUIDES, ROLLERS AND OTHER EQUIPMENT SPECIFIES IN ELEVATOR SPECIFICATION.
- IDENTIFY POWER SOURCES FOR THE MACHINE ROOM, PIT LIGHT AND RECEPTACLE. CONFIRM THAT THE POWER SOURCE IS CONNECTED TO THE SITE'S STANDBY POWER SYSTEM. ADVISE OWNER AND OWNER'S ENGINEER OF FINDINGS. SEE ELEVATOR SPECIFICATION.
- INSTALL NEW ELEVATOR CONTROLLER TO VARY MOTOR SPEED AND CONTROL ELEVATOR VIA CAR AND LANDING CONTROL PANELS. SEE ELEVATOR SPECIFICATION FOR CONTROLLER REQUIREMENT.
- EXISTING OR UPDATED FIRE ALARM INTERFACE MODULES AND TELEPHONE CIRCUITS SHALL BE INTERCONNECTED/INTEGRATED WITH THE NEW ELEVATOR MOTOR CONTROL PANEL. FIRE ALARM AND TELEPHONE CONTRACTOR SHALL COORDINATE THIS WORK WITH THE ELEVATOR CONTRACTOR.
- PROVIDE A HOIST ROPE GRIPPER MEETING CURRENT ELEVATOR CODE. THIS SHOULD BE INSTALLED IN A LOCATION CONVENIENT FOR MAINTENANCE. LOCATION OF THE ROPE GRIPPER IS DEFINED IN THE ELEVATOR SPECIFICATION.
- PROVIDE NEW 480V, 3 POLE MOLDED CASE CIRCUIT BREAKER SIZED FOR THE ECP WITH SHUNT TRIP AND AUXILIARY CONTACT AND NEW POWER CIRCUITS TO 40 AMP CIRCUIT BREAKER AND TO NEW ECP.
- REUSE EXISTING OR PROVIDE NEW DEDICATED 20 AMP, 120 VOLT, BRANCH CIRCUIT FROM THE NORMAL/EMERGENCY PANELBOARD ELP5C-3A IN ROOM 3C14 TO NEW LIGHT SWITCH, LIGHT FIXTURE AND GFCI RECEPTACLE.
- PROVIDE NEW SMOKE DETECTOR IN THE ELEVATOR CONTROL ROOM. CONNECT TO FIRE ALARM SYSTEM FOR USE IN ELEVATOR RECALL FUNCTIONALITY.
- PROVIDE NEW HEAT DETECTOR NEAR THE SPRINKLER HEAD. PROVIDE INTERCONNECTION FOR USE IN SHUNT TRIPPING THE POWER SOURCE TO THE ELEVATOR CONTROL PANEL AFTER ELEVATOR RECALL.
- PROVIDE NEW FIRE ALARM INTERFACE MODULE AND CONNECT TO THE NEW ELEVATOR CONTROL SWITCH'S SHUNT TRIP CIRCUIT.
- SPRINKLER HEADS INSIDE ELEVATOR MACHINE ROOM SHALL REMAIN IN PLACE.
- CONNECT #14 WIRES TO TERMINAL BLOCKS NO.10 AND NO. 11 IN ATS-S5 TO PROVIDE SIGNAL TO ECP THAT THE ATS IS IN EMERGENCY POSITION. LABEL WIRES ON BOTH ENDS SHOWING ELEVATOR# AND ATS#.

- PROVIDE NEW 480V, 3 POLE MOLDED CASE CIRCUIT BREAKER SIZED FOR THE ECP WITH SHUNT TRIP AND AUXILIARY CONTACT AND NEW POWER CIRCUITS TO 40 AMP CIRCUIT BREAKER AND TO NEW ECP.
- REUSE EXISTING OR PROVIDE NEW DEDICATED 20 AMP, 120 VOLT, BRANCH CIRCUIT FROM THE NORMAL/EMERGENCY PANELBOARD ELP5C-3A IN ROOM 3C14 TO NEW LIGHT SWITCH, LIGHT FIXTURE AND GFCI RECEPTACLE.
- PROVIDE NEW SMOKE DETECTOR IN THE ELEVATOR CONTROL ROOM. CONNECT TO FIRE ALARM SYSTEM FOR USE IN ELEVATOR RECALL FUNCTIONALITY.
- PROVIDE NEW HEAT DETECTOR NEAR THE SPRINKLER HEAD. PROVIDE INTERCONNECTION FOR USE IN SHUNT TRIPPING THE POWER SOURCE TO THE ELEVATOR CONTROL PANEL AFTER ELEVATOR RECALL.
- PROVIDE NEW FIRE ALARM INTERFACE MODULE AND CONNECT TO THE NEW ELEVATOR CONTROL SWITCH'S SHUNT TRIP CIRCUIT.
- SPRINKLER HEADS INSIDE ELEVATOR MACHINE ROOM SHALL REMAIN IN PLACE.
- CONNECT #14 WIRES TO TERMINAL BLOCKS NO.10 AND NO. 11 IN ATS-S5 TO PROVIDE SIGNAL TO ECP THAT THE ATS IS IN EMERGENCY POSITION. LABEL WIRES ON BOTH ENDS SHOWING ELEVATOR# AND ATS#.



5 ATS - CONTROL CIRCUIT AND CONNECTION DIAGRAM  
SCALE: NTS

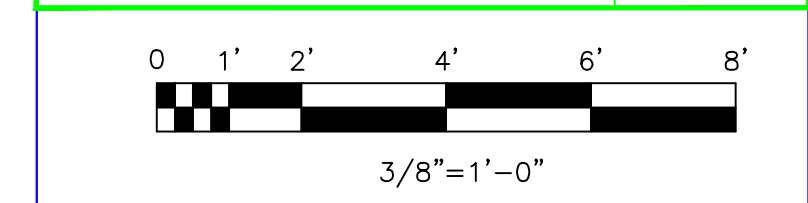
REVISIONS		
ISSUE	DATE	REVISIONS
1	4/12/2022	ISSUED FOR BIDDING



PH ONE CALL NUMBER (FOR DESIGN ONLY) XXXXXXXXXX  
EPP PROJECT COORDINATOR: XXXXXXXXXX

SEAL: \_\_\_\_\_  
DATE: \_\_\_\_\_  
SCALE: \_\_\_\_\_  
DRAWN BY: \_\_\_\_\_  
CHECKED BY: \_\_\_\_\_

MAIDA ENGINEERING INC.		CONSULTING ENGINEERS Philadelphia Office 1315 Walnut Street Suite 804 Philadelphia, PA 19107 (215) 542-8700	
PROJECT NO.	E43024	DATE	3/31/22
PROJECT ENG.	ALA	CHECKED	JFM
CHECKED	JFM	DATE	4/12/22



ECS = ELEVATOR CONTROL SWITCH  
ECP = ELEVATOR CONTROL PANEL  
<E> = EXISTING EQUIPMENT  
<N> = NEW EQUIPMENT  
\* = ELEVATOR MODERNIZATION CO. WILL SIZE MOTOR, WHICH WILL DETERMINE CONDUIT SIZES, ETC.

PROJECT TITLE: ELEVATORS #23 MODERNIZATIONS	
PHASE: _____	
DRAWING TITLE: ELEVATOR #23 MECHANICAL, ELECTRICAL & FIRE ALARM SYSTEM UPGRADES	
PACC PROJECT NO.: XX-XX-XXXX-XX	DRAWING NO.: _____
CONSULTANT PROJECT NO.: E43024	DATE: 03-22-2022
SCALE: 3/8" = 1'-0"	DRAWN BY: ALA
CHECKED BY: JFM	DATE: 4/12/22

ME-2

NOTE: ALL DIMENSIONS AND CONDITIONS SHALL BE VERIFIED BY THE CONTRACTOR AT THE SITE BEFORE PROCEEDING WITH THE WORK.