

DESCRIPTION	EXISTING FIXTURES			NEW FIXTURES			NET CHANGE	
	QTY	DFU	TOTAL DFU	QTY	DFU	TOTAL DFU	QTY	DFU
WATER CLOSET	14	8	112	14	8	112	0	0
URINAL	6	4	24	6	4	24	0	0
LAVATORY	12	2	24	12	2	24	0	0
TOTAL			160	TOTAL		160	NET CHANGE	0

GENERAL NOTES

- REFER TO DRAWING M001 FOR GENERAL NOTES, ABBREVIATIONS AND LEGENDS.
- REFER TO DRAWING M200 FOR SCHEDULES AND DETAILS.
- REFER TO DRAWING M800 SERIES FOR SANITARY AND VENT RISER DIAGRAMS.
- PIPE SIZES AS NOTED ARE FROM HISTORICAL CONSTRUCTION DOCUMENTS DATED BETWEEN 1990 AND 1992. CONTRACTOR SHALL VERIFY ALL SIZES ARE AS SHOWN PRIOR TO START OF WORK. PROVIDE NEW, REPLACE OR MODIFY AS REQUIRED.
- KEYED NOTES MAY NOT APPEAR IN ALL PLAN VIEWS.
- WATER HAMMER ARRESTORS ARE SHOWN FOR APPROXIMATE LOCATION. CONTRACTOR SHALL FIELD COORDINATE FINAL PLACEMENT WITH CONNECTION OF NEW FIXTURES.
- DOMESTIC COLD AND HOT WATER PIPE NOT SHOWN. SEE DOMESTIC WATER NEW WORK NOTES.
- NEW INSULATION SHALL BE INSTALLED FOR ALL NEW DOMESTIC COLD WATER, HOT WATER AND HOT WATER RETURN PIPING.

DOMESTIC WATER NEW WORK:

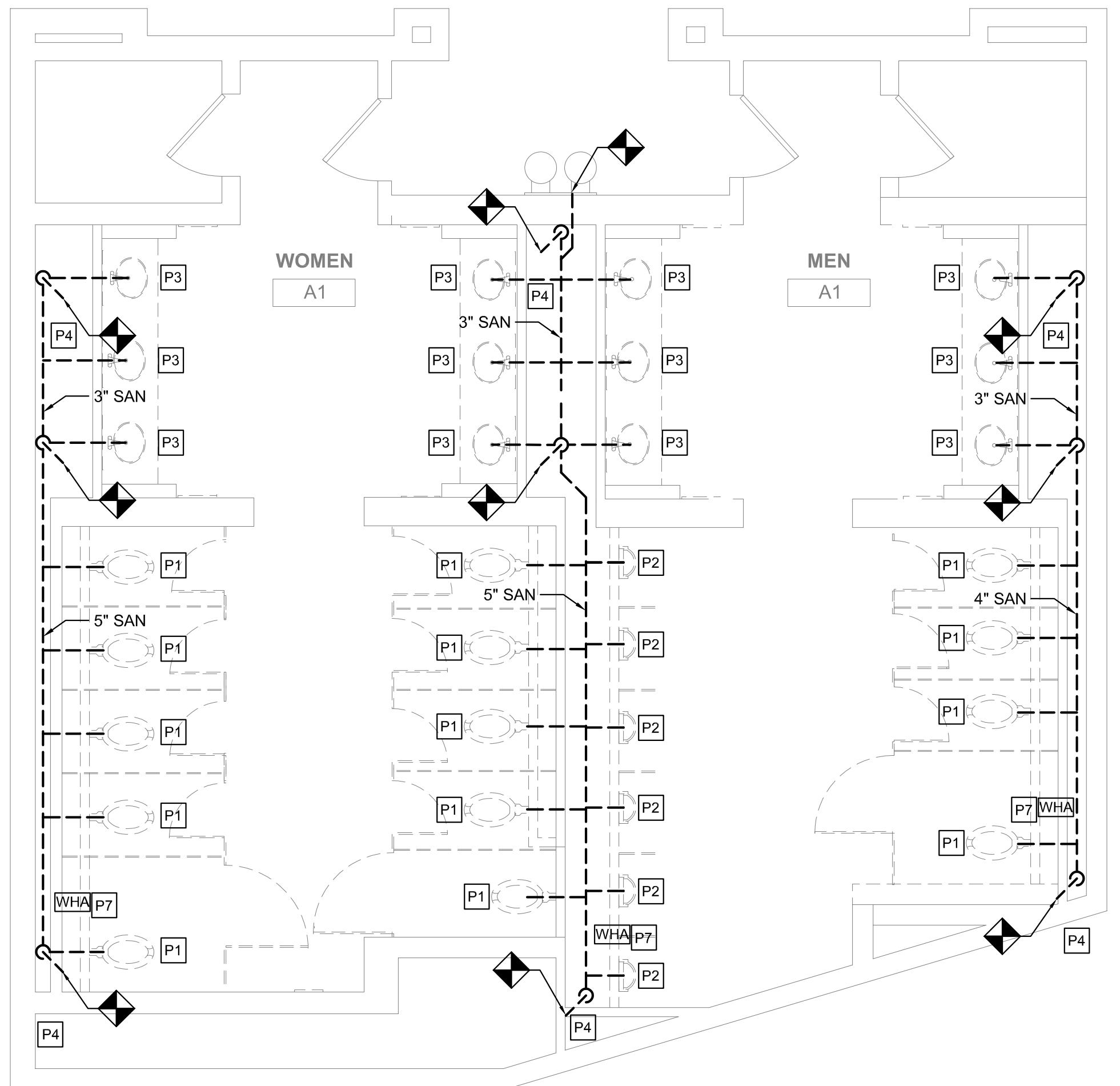
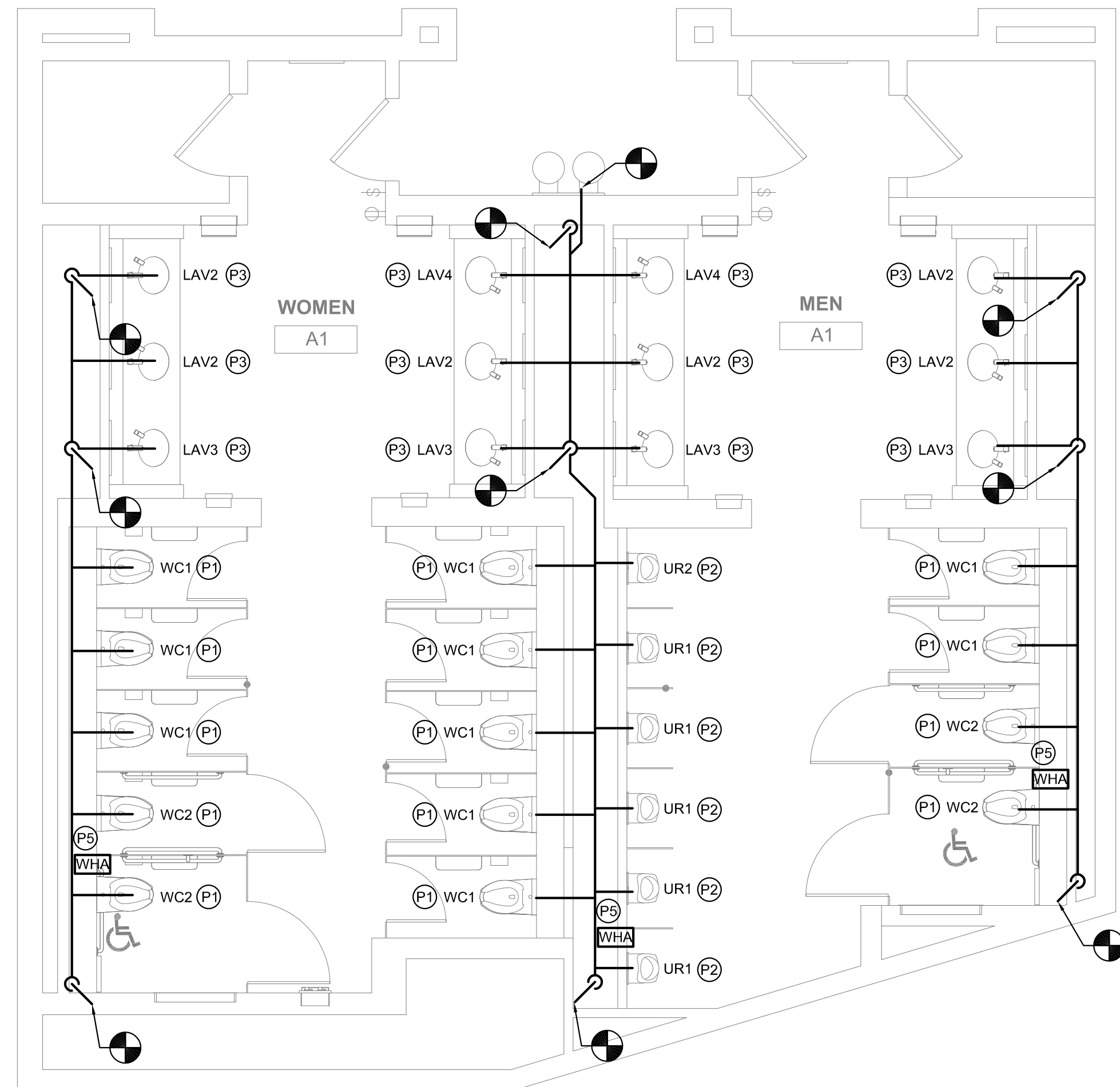
- CONTRACTOR TO DEMOLISH ALL EXISTING CW & HW WATER SUPPLY PIPE EXPOSED BY INTERIOR DEMOLITION WITHIN THE TOILET ROOM. CUT EXISTING SUPPLY PIPE AT LIMIT OF TOILET ROOM PERIMETER WALLS AND CAP FOR NEW WORK CONNECTIONS.
- CONTRACTOR TO PROVIDE NEW CW & HW SUPPLY PIPE. RECONNECT TO EXISTING INCOMING CW & HW SUPPLY PIPE CAPPED DURING DEMOLITION.
- CONTRACTOR TO PROVIDE NEW DOMESTIC 1/2" CW AND HW DOMESTIC WATER SUPPLY TO EACH LAVATORY (LAV) FIXTURE.
- CONTRACTOR TO PROVIDE 1" CW DOMESTIC WATER SUPPLY TO EACH WATER CLOSET (WC) FIXTURE.
- CONTRACTOR TO PROVIDE 3/4" CW DOMESTIC WATER SUPPLY TO EACH URINAL (UR) FIXTURE.
- WHERE NEW FLOOR DRAINS ARE NOTED ON DRAWINGS, PROVIDE NEW 1/2" TRAP PRIMER CONNECTION.
- CONTRACTOR TO PROVIDE WATER HAMMER ARRESTORS TO DOMESTIC WATER SUPPLY LINES PRIOR TO LAST FIXTURE IN SERIES AS INDICATED. SEE WATER HAMMER ARRESTOR SCHEDULE SHEET M-200.

NEW WORK KEYED NOTES

- (P1) PROVIDE NEW WATER CLOSET AND ALL ACCESSORIES AS NOTED ON FIXTURE SCHEDULE INCLUDING, BUT NOT LIMITED TO, FLUSHMETER, CARRIER, SHUT OFF VALVE, SEAT, DOMESTIC WATER, SANITARY AND VENT PIPING. REFER TO ARCHITECTURAL DRAWINGS FOR MOUNTING HEIGHT AND ADA REQUIREMENTS.
- (P2) PROVIDE NEW URINAL AND ALL ACCESSORIES AS NOTED ON FIXTURE SCHEDULE INCLUDING, BUT NOT LIMITED TO, FLUSHMETER, CARRIER, SHUT OFF VALVE, DOMESTIC WATER, SANITARY AND VENT PIPING. REFER TO ARCHITECTURAL DRAWINGS FOR MOUNTING HEIGHT AND ADA REQUIREMENTS.
- (P3) PROVIDE NEW LAVATORY AND ALL ACCESSORIES AS NOTED ON FIXTURE SCHEDULE INCLUDING, BUT NOT LIMITED TO, FAUCETS, SOAP DISPENSERS, HAND DRYERS, DOMESTIC WATER, SANITARY AND VENT PIPING. REFER TO ARCHITECTURAL DRAWINGS FOR MOUNTING HEIGHT AND ADA REQUIREMENTS.
- (P4) PROVIDE NEW ELECTRIC WATER COOLER AND ALL ACCESSORIES AS NOTED ON THE FIXTURE SCHEDULE INCLUDING, BUT NOT LIMITED TO, WATER COOLER, REFRIGERATION, FILTER, DOMESTIC WATER, SANITARY AND VENT PIPING. REFER TO ARCHITECTURAL DRAWING FOR MOUNTING HEIGHT AND ADA REQUIREMENTS.
- (P5) PROVIDE NEW WATER HAMMER ARRESTOR.
- (P6) PROVIDE FLOOR DRAIN AS NOTED WITH TRAP PRIMER PER CONVENTION CENTER STANDARDS. COORDINATE FINAL LOCATION WITH ARCHITECTURAL DRAWINGS.
- (P7) CONTRACTOR SHALL PROVIDE NEW SANITARY FITTINGS FROM NEW INSTALLED SANITARY AND VENT PIPE TO EXISTING PIPE.
- (P8) EXISTING WATER HEATER TO REMAIN. PROVIDE NEW SHUT OFF VALVE FOR NEW HOT WATER SERVICE.

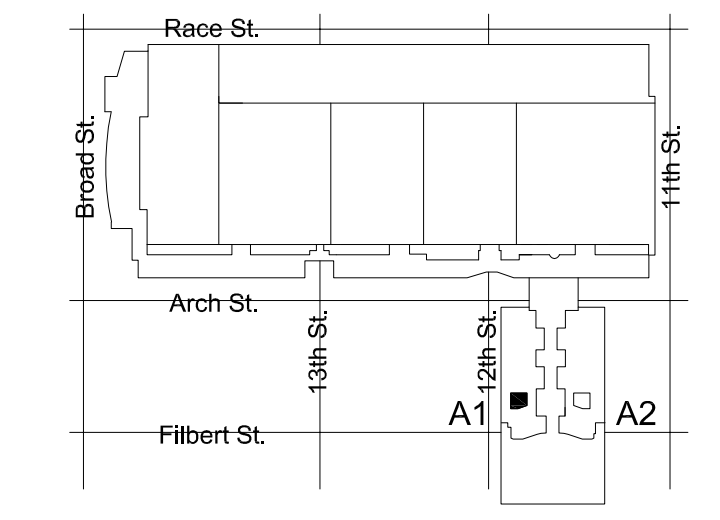
DEMOLITION KEYED NOTES

- (P1) REMOVE EXISTING WATER CLOSET, FLUSH VALVE, CARRIER, PIPING AND ACCESSORIES. REFER TO NEW WORK PLAN FOR NEW FIXTURE LOCATION AND CONNECTIONS.
- (P2) REMOVE EXISTING URINAL, FLUSH VALVE, CARRIER, PIPING AND ACCESSORIES. REFER TO NEW WORK PLAN FOR NEW FIXTURE LOCATION AND CONNECTIONS.
- (P3) REMOVE EXISTING LAVATORY, FAUCET, PIPING AND ACCESSORIES. REFER TO NEW WORK PLAN FOR NEW FIXTURE LOCATION AND CONNECTIONS.
- (P4) REMOVE SANITARY PIPING IN CHASE TO ALLOW INSTALLATION OF NEW CARRIERS AND FIXTURES. EXISTING VENT PIPING MAY REMAIN. CONTRACTOR SHALL CONNECT FIXTURES TO EXISTING VENT PIPING TO MEET PHILADELPHIA PLUMBING CODE.
- (P5) REMOVE EXISTING ELECTRIC WATER COOLER, PIPING AND ACCESSORIES, CUT AND CAP DOMESTIC COLD WATER PIPE. REFER TO NEW WORK PLAN FOR NEW FIXTURE LOCATION AND CONNECTIONS.
- (P6) REFER TO NOTE 1 OF DOMESTIC WATER NEW WORK FOR LIMIT OF DEMOLITION.
- (P7) DEMOLISH EXISTING WATER HAMMER ARRESTER.
- (P8) EXISTING WATER HEATER TO REMAIN. DEMOLISH HOT WATER PIPE BACK TO INSIDE OF JANITOR'S ROOM.



2 FLOOR PLAN - MEN'S & WOMEN'S ROOM A1
M123 SCALE: 1/4" = 1'-0"

1 DEMO PLAN - MEN'S & WOMEN'S ROOM A1
M123 SCALE: 1/4" = 1'-0"



KEY PLAN - BALLROOM LEVEL NTS



MEP ENGINEERS:



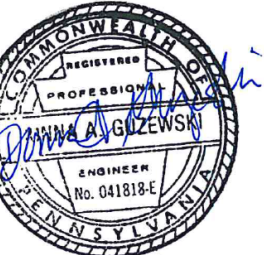
Arora Engineers, Inc.
61 Wilmington West Chester Pike | Chadds Ford, PA 19317
P (610) 459-7900 | F (610) 459-7950 | aroraengineers.com

Contact: Kevin Sultanik
e-mail: ksultanik@aroraengineers.com

STRUCTURAL ENGINEERS:
CSA GROUP
1341 NORTH DELAWARE AVENUE,
SUITE 507
PHILADELPHIA, PA 19125

Ph: 215.427.8700
Fax: 215.427.8752

Contact: Wing Au
e-mail: wau@csagroup.com



REVISIONS:

No.	Description	Date

PENNSYLVANIA CONVENTION CENTER RESTROOM RENOVATIONS
1101 ARCH STREET, PHILADELPHIA, PA 19107

DEMOLITION & NEW FLOOR PLANS - ROOM A1 (BALLROOM)

Project number CW1615
Date November 25, 2019
Drawn by DG
Checked by DM

M123

Scale 1/4" = 1'-0"

DESCRIPTION	EXISTING FIXTURES			NEW FIXTURES			NET CHANGE	
	QTY	DFU	TOTAL DFU	QTY	DFU	TOTAL DFU	QTY	DFU
WATER CLOSET	14	8	112	14	8	112	0	0
URINAL	6	4	24	6	4	24	0	0
LAVATORY	12	2	24	12	2	24	0	0
TOTAL			160	TOTAL		160	NET CHANGE	0

GENERAL NOTES

- REFER TO DRAWING M001 FOR GENERAL NOTES, ABBREVIATIONS AND LEGENDS.
- REFER TO DRAWING M200 FOR SCHEDULES AND DETAILS.
- REFER TO DRAWING M800 SERIES FOR SANITARY AND VENT RISER DIAGRAMS.
- PIPE SIZES AS NOTED ARE FROM HISTORICAL CONSTRUCTION DOCUMENTS DATED BETWEEN 1980 AND 1992. CONTRACTOR SHALL VERIFY ALL SIZES ARE AS SHOWN PRIOR TO START OF WORK. PROVIDE NEW, REPLACE OR MODIFY AS REQUIRED.
- KEYED NOTES MAY NOT APPEAR IN ALL PLAN VIEWS.
- WATER HAMMER ARRESTORS ARE SHOWN FOR APPROXIMATE LOCATION. CONTRACTOR SHALL FIELD COORDINATE FINAL PLACEMENT WITH CONNECTION OF NEW FIXTURES.
- DOMESTIC COLD AND HOT WATER PIPE NOT SHOWN. SEE DOMESTIC WATER NEW WORK NOTES.
- NEW INSULATION SHALL BE INSTALLED FOR ALL NEW DOMESTIC COLD WATER, HOT WATER AND HOT WATER RETURN PIPING.

DOMESTIC WATER NEW WORK:

- CONTRACTOR TO DEMOLISH ALL EXISTING CW & HW WATER SUPPLY PIPE EXPOSED BY INTERIOR DEMOLITION WITHIN THE TOILET ROOM. CUT EXISTING SUPPLY PIPE AT LIMIT OF TOILET ROOM PERIMETER WALLS AND CAP FOR NEW WORK CONNECTIONS.
- CONTRACTOR TO PROVIDE NEW CW & HW SUPPLY PIPE. RECONNECT TO EXISTING INCOMING CW & HW SUPPLY PIPE CAPPED DURING DEMOLITION.
- CONTRACTOR TO PROVIDE NEW DOMESTIC 1/2" CW AND HW DOMESTIC WATER SUPPLY TO EACH LAVATORY (LAV) FIXTURE.
- CONTRACTOR TO PROVIDE 1" CW DOMESTIC WATER SUPPLY TO EACH WATER CLOSET (WC) FIXTURE.
- CONTRACTOR TO PROVIDE 3/4" CW DOMESTIC WATER SUPPLY TO EACH URINAL (UR) FIXTURE.
- WHERE NEW FLOOR DRAINS ARE NOTED ON DRAWINGS, PROVIDE NEW 1/2" TRAP PRIMER CONNECTION.
- CONTRACTOR TO PROVIDE WATER HAMMER ARRESTORS TO DOMESTIC WATER SUPPLY LINES PRIOR TO LAST FIXTURE IN SERIES AS INDICATED. SEE WATER HAMMER ARRESTOR SCHEDULE SHEET M-200.

NEW WORK KEYED NOTES

- (P1) PROVIDE NEW WATER CLOSET AND ALL ACCESSORIES AS NOTED ON FIXTURE SCHEDULE INCLUDING, BUT NOT LIMITED TO, FLUSHMETER, CARRIER, SHUT OFF VALVE, SEAT, DOMESTIC WATER, SANITARY AND VENT PIPING. REFER TO ARCHITECTURAL DRAWINGS FOR MOUNTING HEIGHT AND ADA REQUIREMENTS.
- (P2) PROVIDE NEW URINAL AND ALL ACCESSORIES AS NOTED ON FIXTURE SCHEDULE INCLUDING, BUT NOT LIMITED TO, FLUSHMETER, CARRIER, SHUT OFF VALVE, DOMESTIC WATER, SANITARY AND VENT PIPING. REFER TO ARCHITECTURAL DRAWINGS FOR MOUNTING HEIGHT AND ADA REQUIREMENTS.
- (P3) PROVIDE NEW LAVATORY AND ALL ACCESSORIES AS NOTED ON FIXTURE SCHEDULE INCLUDING, BUT NOT LIMITED TO, FAUCETS, SOAP DISPENSERS, HAND DRYERS, DOMESTIC WATER, SANITARY AND VENT PIPING. REFER TO ARCHITECTURAL DRAWINGS FOR MOUNTING HEIGHT AND ADA REQUIREMENTS.
- (P4) PROVIDE NEW ELECTRIC WATER COOLER AND ALL ACCESSORIES AS NOTED ON THE FIXTURE SCHEDULE INCLUDING, BUT NOT LIMITED TO WATER COOLER, REFRIGERATION, FILTER, DOMESTIC WATER, SANITARY AND VENT PIPING. REFER TO ARCHITECTURAL DRAWING FOR MOUNTING HEIGHT AND ADA REQUIREMENTS.
- (P5) PROVIDE NEW WATER HAMMER ARRESTOR.
- (P6) PROVIDE FLOOR DRAIN AS NOTED WITH TRAP PRIMER PER CONVENTION CENTER STANDARDS. COORDINATE FINAL LOCATION WITH ARCHITECTURAL DRAWINGS.
- (P7) CONTRACTOR SHALL PROVIDE NEW SANITARY FITTINGS FROM NEW INSTALLED SANITARY AND VENT PIPE TO EXISTING PIPE.
- (P8) EXISTING WATER HEATER TO REMAIN. PROVIDE NEW SHUT OFF VALVE FOR NEW HOT WATER SERVICE.

DEMOLITION KEYED NOTES

- (P1) REMOVE EXISTING WATER CLOSET, FLUSH VALVE, CARRIER, PIPING AND ACCESSORIES. REFER TO NEW WORK PLAN FOR NEW FIXTURE LOCATION AND CONNECTIONS.
- (P2) REMOVE EXISTING URINAL, FLUSH VALVE, CARRIER, PIPING AND ACCESSORIES. REFER TO NEW WORK PLAN FOR NEW FIXTURE LOCATION AND CONNECTIONS.
- (P3) REMOVE EXISTING LAVATORY, FAUCET, PIPING AND ACCESSORIES. REFER TO NEW WORK PLAN FOR NEW FIXTURE LOCATION AND CONNECTIONS.
- (P4) REMOVE SANITARY PIPING IN CHASE TO ALLOW INSTALLATION OF NEW CARRIERS AND FIXTURES. EXISTING VENT PIPING MAY REMAIN. CONTRACTOR SHALL CONNECT FIXTURES TO EXISTING VENT PIPING TO MEET PHILADELPHIA PLUMBING CODE.
- (P5) REMOVE EXISTING ELECTRIC WATER COOLER, PIPING AND ACCESSORIES, CUT AND CAP DOMESTIC COLD WATER PIPE. REFER TO NEW WORK PLAN FOR NEW FIXTURE LOCATION AND CONNECTIONS.
- (P6) REFER TO NOTE 1 OF DOMESTIC WATER NEW WORK FOR LIMIT OF DEMOLITION.
- (P7) DEMOLISH EXISTING WATER HAMMER ARRESTOR.
- (P8) EXISTING WATER HEATER TO REMAIN. DEMOLISH HOT WATER PIPE BACK TO INSIDE OF JANITOR'S ROOM.



MEP ENGINEERS:



Arora Engineers, Inc.
61 Wilmington West Chester Pike | Chadds Ford, PA 19317
P (610) 459-7900 | F (610) 459-7950 | aroraengineers.com

Contact: Kevin Sultanik
e-mail: ksultanik@aroraengineers.com

STRUCTURAL ENGINEERS:
CSA GROUP
1341 NORTH DELAWARE AVENUE,
SUITE 507
PHILADELPHIA, PA 19125

Ph: 215.427.8700
Fax: 215.427.8752

Contact: Wing Au
e-mail: wau@csagroup.com



REVISIONS:

No.	Description	Date

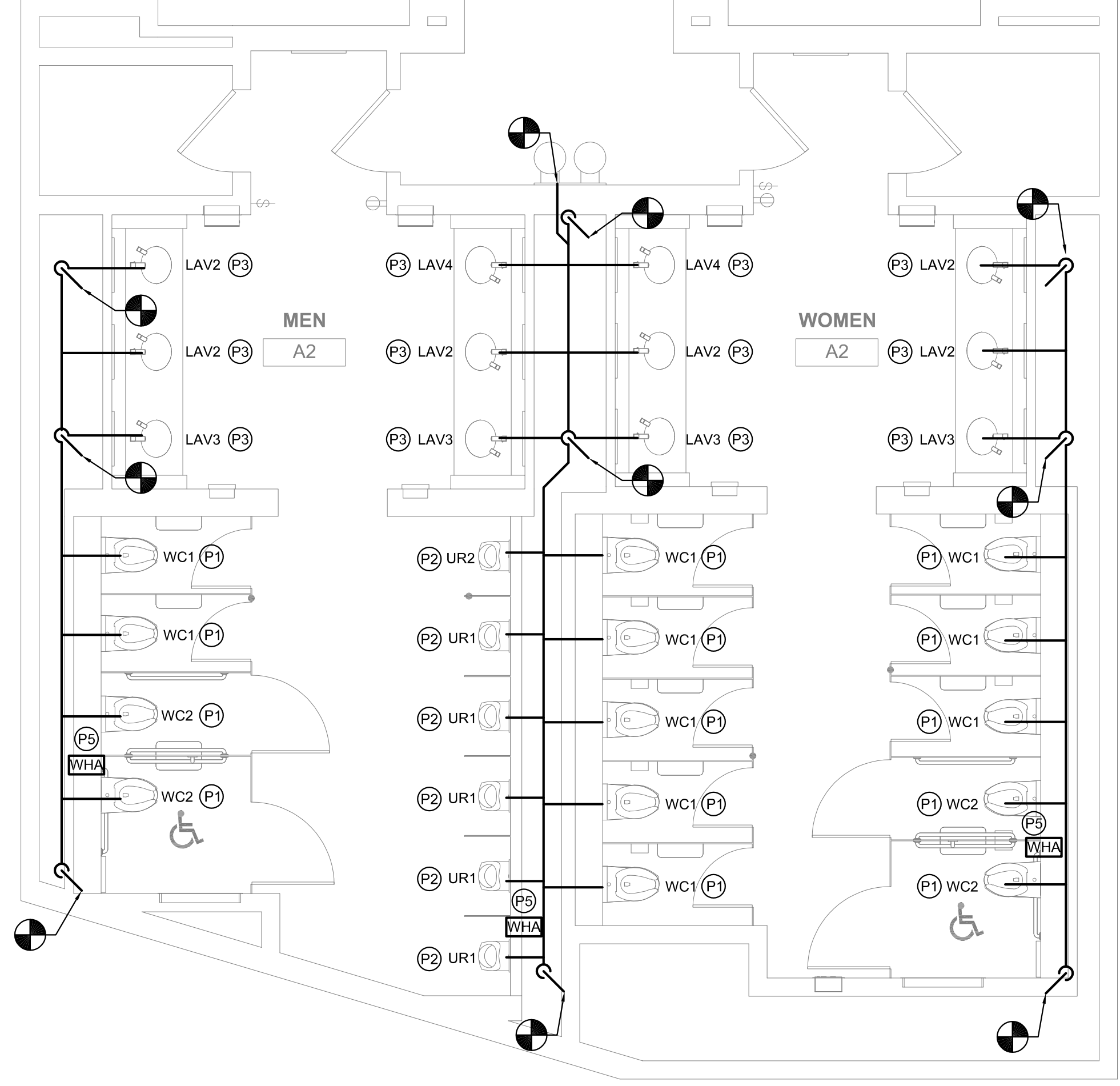
PENNSYLVANIA CONVENTION CENTER
RESTROOM RENOVATIONS
 1101 ARCH STREET, PHILADELPHIA, PA 19107

DEMOLITION & NEW FLOOR PLANS - ROOM A2 (BALLROOM)

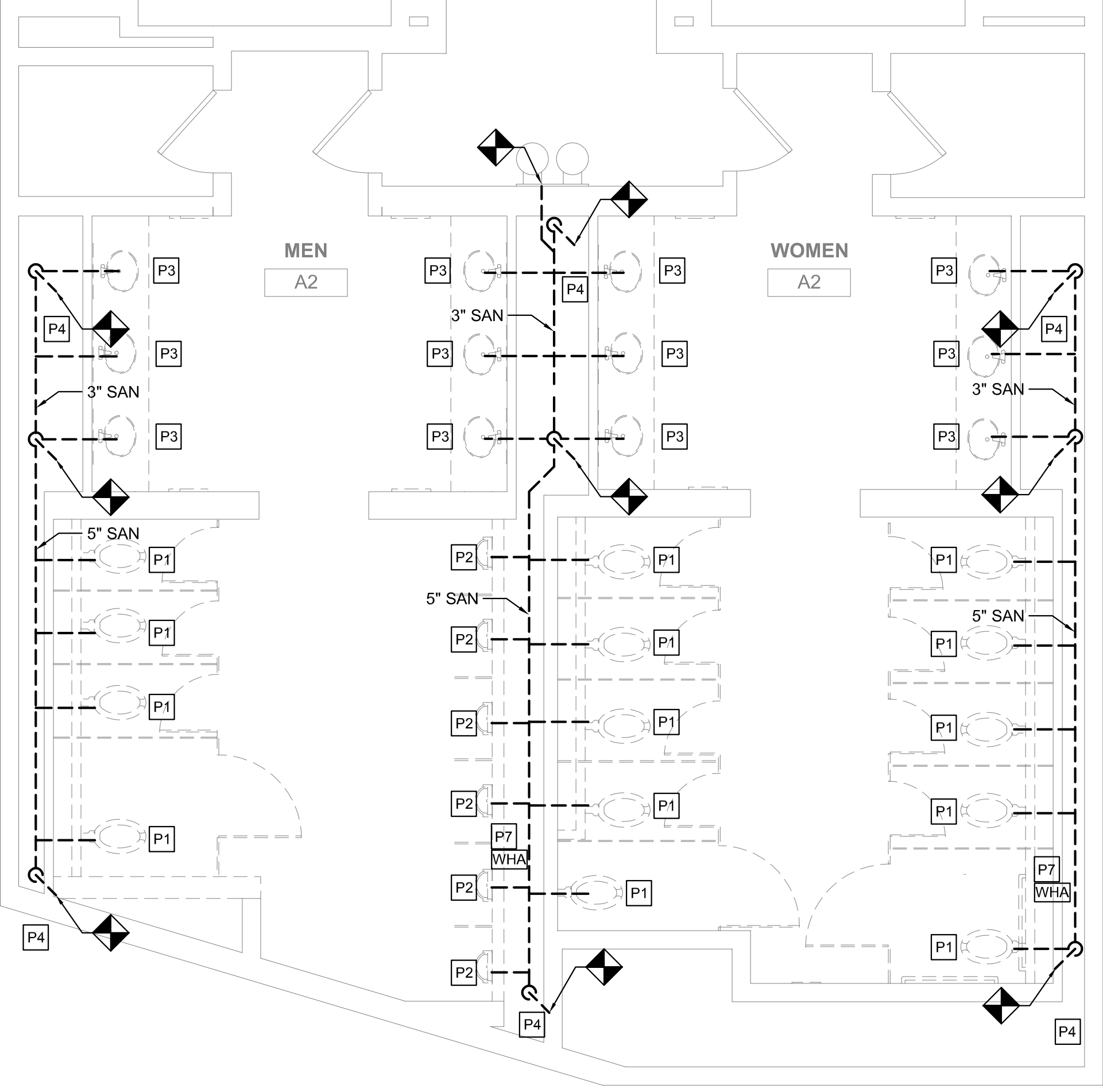
Project number CW1615
Date November 25, 2019
Drawn by DG
Checked by DM

M124

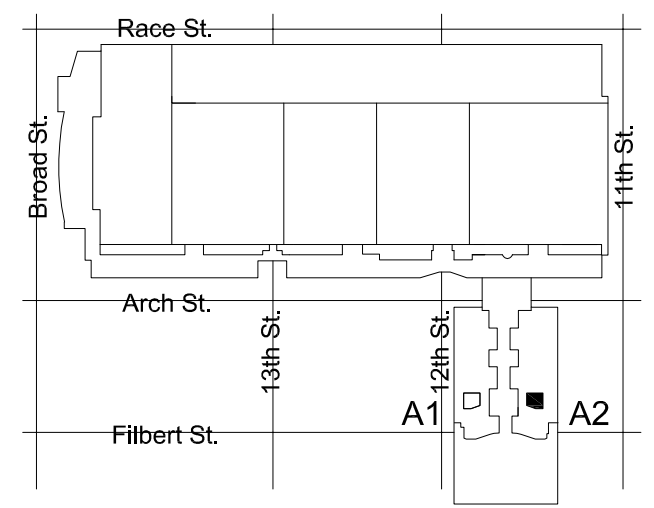
Scale 1/4" = 1'-0"



2 FLOOR PLAN - MEN'S & WOMEN'S ROOM A2
M124 SCALE: 1/4" = 1'-0"



1 DEMO PLAN - MEN'S & WOMEN'S ROOM A2
M124 SCALE: 1/4" = 1'-0"



KEY PLAN - BALLROOM LEVEL NTS



EXHAUST VENTILATION - TOILET ROOM K					
ROOM TYPE	ROOM NAME	TOTAL NUMBER OF WC'S AND UR'S	EXHAUST AIR (CFM PER FIXTURE)	EXHAUST AIR (CFM REQUIRED)	EXHAUST AIR (CFM PROVIDED)
TOILET ROOM-PUBLIC	MEN	12	70	840	990
TOILET ROOM-PUBLIC	WOMEN	13	70	910	1010

NOTES:
 1. EXHAUST PROVIDED PER SECTION 403 OF THE 2015 IMC (PER PA UCC).
 2. EXHAUST RUNS CONTINUOUSLY DURING OCCUPIED PERIOD.

GENERAL NOTES

- REFER TO DRAWING M001 FOR GENERAL NOTES, ABBREVIATIONS AND LEGENDS.
- REFER TO DRAWING M200 FOR SCHEDULES AND DETAILS.
- EXISTING SPRINKLER HEADS SHALL NOT BE RE-INSTALLED. REUSING SPRINKLER HEADS REMOVED WITHIN PROJECT SCOPE IS PROHIBITED.
- ALL SPRINKLERS SHALL BE CONCEALED SPRINKLER HEADS. SPRINKLER FINISH SHALL BE COORDINATED WITH THE ARCHITECT.
- DUCT SIZES AS NOTED ARE FROM HISTORICAL DRAWINGS. CONTRACTOR SHALL VERIFY ALL SIZES ARE AS SHOWN PRIOR TO START OF WORK. PROVIDE NEW/REPLACE OR MODIFY AS REQUIRED.
- KEYED NOTES MAY NOT APPEAR IN ALL PLAN VIEWS.

NEW WORK KEYED NOTES

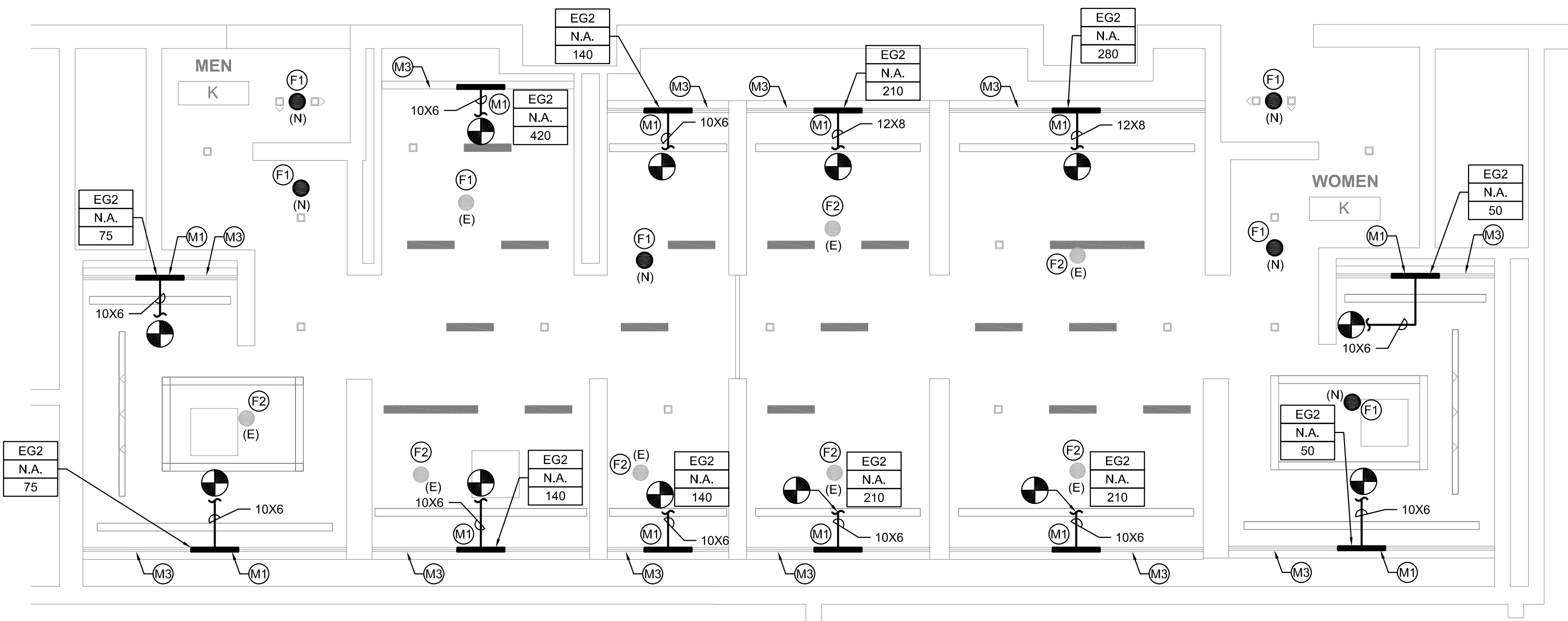
- (M1) PROVIDE NEW CEILING MOUNTED LINEAR SLOT GRILLE FOR TOILET ROOM EXHAUST. CONNECT TO EXISTING EXHAUST DUCTWORK. PROVIDE TRANSITION FROM EXISTING TO NEW. RE-BALANCE EXHAUST SYSTEM AS NOTED ON DRAWING AND IN ACCORDANCE WITH 2018 IMC. WHERE NOTED BY ARCHITECT. GRILLE COLOR TO MATCH SOFFIT COLOR. CONTRACTOR TO PAINT BLACK THE ENTIRE INTERIOR OF PLENUM BOX AND ANY VISIBLE DUCTWORK.
- (M2) PROVIDE NEW CEILING MOUNTED TRANSFER GRILLE.
- (M3) PROVIDE SPACER SECTIONS FOR CONTINUITY OF GRILLE FOR CONTINUOUS GRILLE APPEARANCE IN SOFFIT. CONTRACTOR TO PROVIDE BLANK OFF PANELS ABOVE GRILLES TO OBSCURE STRUCTURE ABOVE FROM VIEW.
- (F1) PROVIDE NEW CONCEALED SPRINKLER HEAD. CONTRACTOR SHALL REUSE AS MUCH OF THE EXISTING SPRINKLER BRANCH PIPING AS POSSIBLE TO ACCOMMODATE NEW SPRINKLER HEAD LOCATION CONDITIONS. WHERE NOT ABLE TO REUSE EXISTING PIPING, NEW PIPING SHALL BE PROVIDED.
- (F2) EXISTING SPRINKLER HEAD SHALL REMAIN UNLESS SPRINKLER HEAD IS REMOVED. WHERE SPRINKLER HEAD IS REMOVED, CONTRACTOR SHALL REUSE AS MUCH OF THE EXISTING SPRINKLER BRANCH PIPING AS POSSIBLE AND PROVIDE NEW CONCEALED SPRINKLER HEAD. REFER TO DRAWING SHEET M200, DETAIL 1 FOR TYPICAL MODIFICATION.

PRE-DEMOLITION BALANCING NOTE

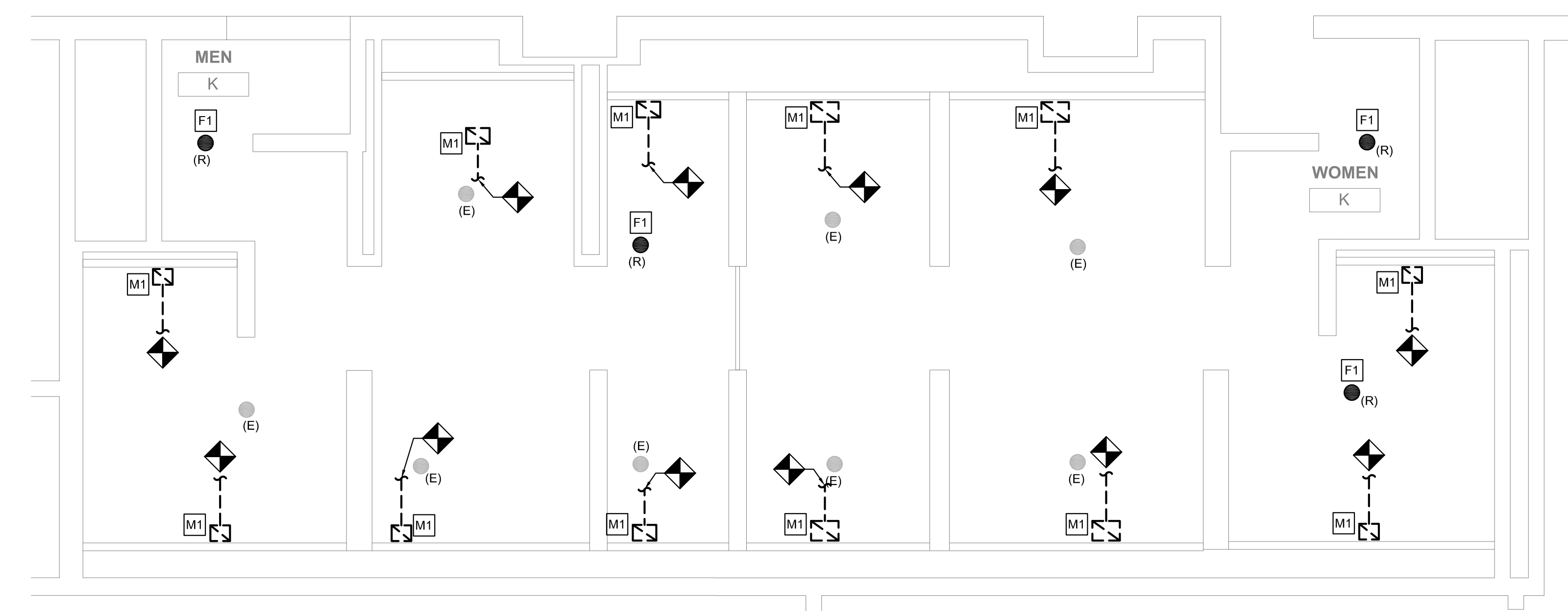
PRIOR TO START OF ANY WORK, MEASURE AND RECORD EXISTING EXHAUST AIRFLOWS THRU EXISTING GRILLES. SUBMIT PRE-DEMOLITION BALANCING REPORT TO ENGINEER PRIOR TO STARTING ANY WORK. VERIFY (E) BALANCING PROVISIONS AND PROVIDE NEW/ADDITIONAL BALANCING DAMPERS, ETC AS REQUIRED TO BALANCE NEW INSTALLATION TO VALUES INDICATED.

DEMOLITION KEYED NOTES

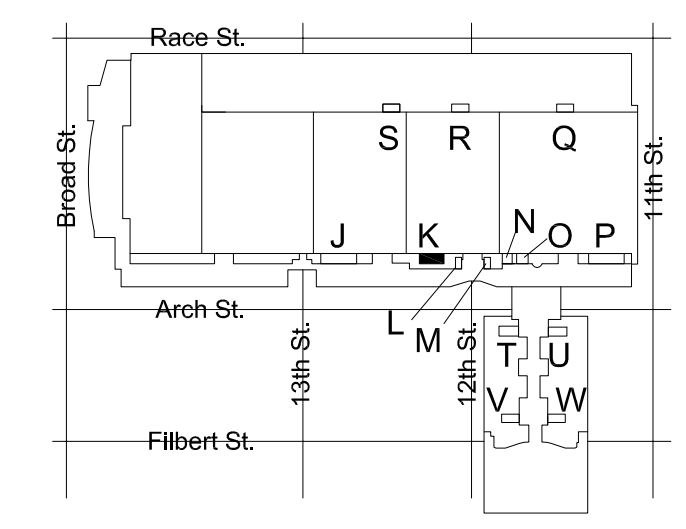
- (M1) REMOVE EXISTING EXHAUST GRILLE. PREPARE DUCT FOR INSTALLATION OF NEW GRILLE. REFER TO ARCHITECTURAL PLAN FOR NEW CEILING HEIGHT. REFER TO NEW WORK PLAN FOR NEW GRILLE LOCATION.
- (M2) REMOVE TRANSFER AIR GRILLE. PREPARE DUCT FOR INSTALLATION OF NEW GRILLE. REFER TO ARCHITECTURAL PLAN FOR NEW CEILING HEIGHT. REFER TO NEW WORK PLAN FOR GRILLE LOCATION.
- (F1) REMOVE SPRINKLER HEAD. REMOVE EXISTING BRANCH LINES, FITTINGS, ETC. BACK TO EXISTING ELBOW OR TEE. REUSE AS MUCH OF THE EXISTING MAINS AS POSSIBLE. REFER TO DRAWING SHEET M200, DETAIL 1 FOR TYPICAL MODIFICATION.



2 REFLECTED CEILING PLAN - MEN'S & WOMEN'S ROOM K
 M605 SCALE: 1/4" = 1'-0"



1 DEMO PLAN - MEN'S & WOMEN'S ROOM K
 M605 SCALE: 1/4" = 1'-0"



KEY PLAN - LEVEL 200 NTS

MEP ENGINEERS:



Arora Engineers, Inc.
 61 Wilmington-West Chester Pike | Chadds Ford, PA 19317
 P (610) 459-7900 | F (610) 459-7950 | aroraengineers.com

Contact: Kevin Sultanik
 e-mail: ksultanik@aroraengineers.com

STRUCTURAL ENGINEERS:

CSA GROUP
 1341 NORTH DELAWARE AVENUE,
 SUITE 507
 PHILADELPHIA, PA 19125

Ph: 215.427.8700
 Fax: 215.427.8752

Contact: Wing Au
 e-mail: wau@csagroup.com



REVISIONS:

No.	Description	Date

PENNSYLVANIA CONVENTION CENTER
RESTROOM RENOVATIONS
 1101 ARCH STREET, PHILADELPHIA, PA 19107

REFLECTED CEILING PLAN - ROOM K (EXHIBIT)

Project number CW1615
 Date November 25, 2019
 Drawn by DG, WB
 Checked by DM

M605

Scale 1/4" = 1'-0"

EXHAUST VENTILATION - TOILET ROOM P					
ROOM TYPE	ROOM NAME	TOTAL NUMBER OF WC'S AND URS	EXHAUST AIR (CFM PER FIXTURE)	EXHAUST AIR (CFM REQUIRED)	EXHAUST AIR (CFM PROVIDED)
TOILET ROOM-PUBLIC	MEN	19	70	1330	1480
TOILET ROOM-PUBLIC	WOMEN	19	70	1330	1490

NOTES:
 1. EXHAUST PROVIDED PER SECTION 403 OF THE 2015 IMC (PER PA UCC).
 2. EXHAUST RUNS CONTINUOUSLY DURING OCCUPIED PERIOD.

GENERAL NOTES

- REFER TO DRAWING M001 FOR GENERAL NOTES, ABBREVIATIONS AND LEGENDS.
- REFER TO DRAWING M200 FOR SCHEDULES AND DETAILS.
- EXISTING SPRINKLER HEADS SHALL NOT BE RE-INSTALLED. REUSING SPRINKLER HEADS REMOVED WITHIN PROJECT SCOPE IS PROHIBITED.
- ALL SPRINKLERS SHALL BE CONCEALED SPRINKLER HEADS. SPRINKLER FINISH SHALL BE COORDINATED WITH THE ARCHITECT.
- DUCT SIZES AS NOTED ARE FROM HISTORICAL DRAWINGS. CONTRACTOR SHALL VERIFY ALL SIZES ARE AS SHOWN PRIOR TO START OF WORK. PROVIDE NEW/REPLACE OR MODIFY AS REQUIRED.
- KEYED NOTES MAY NOT APPEAR IN ALL PLAN VIEWS.

NEW WORK KEYED NOTES

- (M1) PROVIDE NEW CEILING MOUNTED LINEAR SLOT GRILLE FOR TOILET ROOM EXHAUST. CONNECT TO EXISTING EXHAUST DUCTWORK. PROVIDE TRANSITION FROM EXISTING TO NEW. RE-BALANCE EXHAUST SYSTEM AS NOTED ON DRAWING AND IN ACCORDANCE WITH 2018 IMC. WHERE NOTED BY ARCHITECT, GRILLE COLOR TO MATCH SOFFIT COLOR. CONTRACTOR TO PAINT FLAT BLACK THE ENTIRE INTERIOR OF PLENUM BOX AND ANY VISIBLE DUCTWORK.
- (M2) PROVIDE NEW CEILING MOUNTED TRANSFER GRILLE.
- (M3) PROVIDE SPACER SECTIONS FOR CONTINUITY OF GRILLE FOR CONTINUOUS GRILLE APPEARANCE IN SOFFIT. CONTRACTOR TO PROVIDE BLANK OFF PANELS ABOVE GRILLES TO OBSCURE STRUCTURE ABOVE FROM VIEW.
- (F1) PROVIDE NEW CONCEALED SPRINKLER HEAD. CONTRACTOR SHALL REUSE AS MUCH OF THE EXISTING SPRINKLER BRANCH PIPING AS POSSIBLE TO ACCOMMODATE NEW SPRINKLER HEAD LOCATION CONDITIONS. WHERE NOT ABLE TO REUSE EXISTING PIPING, NEW PIPING SHALL BE PROVIDED.
- (F2) EXISTING SPRINKLER HEAD SHALL REMAIN UNLESS SPRINKLER HEAD IS REMOVED. WHERE SPRINKLER HEAD IS REMOVED, CONTRACTOR SHALL REUSE AS MUCH OF THE EXISTING SPRINKLER BRANCH PIPING AS POSSIBLE AND PROVIDE NEW CONCEALED SPRINKLER HEAD. REFER TO DRAWING SHEET M200, DETAIL 1 FOR TYPICAL MODIFICATION.

PRE-DEMOLITION BALANCING NOTE

PRIOR TO START OF ANY WORK, MEASURE AND RECORD EXISTING EXHAUST AIRFLOWS THRU EXISTING GRILLES. SUBMIT PRE-DEMOLITION BALANCING REPORT TO ENGINEER PRIOR TO STARTING ANY WORK. VERIFY (E) BALANCING PROVISIONS AND PROVIDE NEW/ADDITIONAL BALANCING DAMPERS, ETC AS REQUIRED TO BALANCE NEW INSTALLATION TO VALUES INDICATED.

DEMOLITION KEYED NOTES

- (M1) REMOVE EXISTING EXHAUST GRILLE. PREPARE DUCT FOR INSTALLATION OF NEW GRILLE. REFER TO ARCHITECTURAL PLAN FOR NEW CEILING HEIGHT. REFER TO NEW WORK PLAN FOR NEW GRILLE LOCATION.
- (M2) REMOVE TRANSFER AIR GRILLE. PREPARE DUCT FOR INSTALLATION OF NEW GRILLE. REFER TO ARCHITECTURAL PLAN FOR NEW CEILING HEIGHT. REFER TO NEW WORK PLAN FOR GRILLE LOCATION.
- (F1) REMOVE SPRINKLER HEAD. REMOVE EXISTING BRANCH LINES, FITTINGS, ETC. BACK TO EXISTING ELBOW OR TEE. REUSE AS MUCH OF THE EXISTING MAINS AS POSSIBLE. REFER TO DRAWING SHEET M200, DETAIL 1 FOR TYPICAL MODIFICATION.

MEP ENGINEERS:



Arora Engineers, Inc.
 61 Wilmington West Chester Pike | Chadds Ford, PA 19317
 P (610) 459-7900 | F (610) 459-7950 | aroraengineers.com

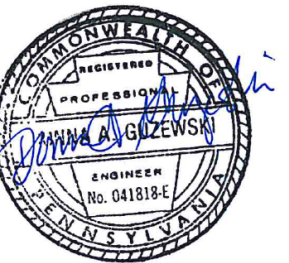
Contact: Kevin Sultanik
 e-mail: ksultanik@aroraengineers.com

STRUCTURAL ENGINEERS:

CSA GROUP
 1341 NORTH DELAWARE AVENUE,
 SUITE 507
 PHILADELPHIA, PA 19125

Ph: 215.427.8700
 Fax: 215.427.8752

Contact: Wing Au
 e-mail: wau@csagroup.com



REVISIONS:

No.	Description	Date

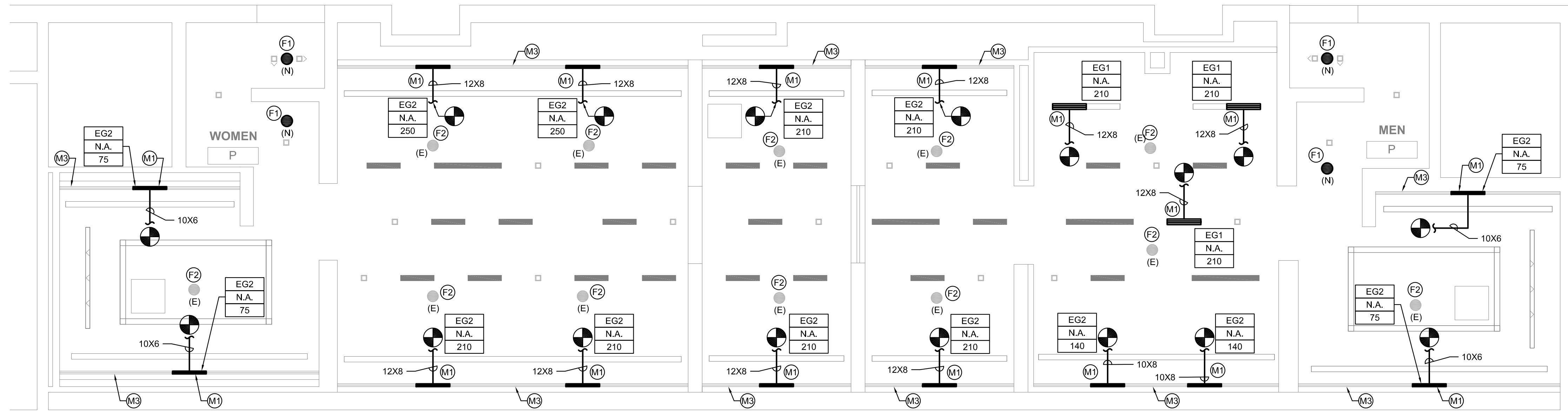
PENNSYLVANIA CONVENTION CENTER RESTROOM RENOVATIONS
 1101 ARCH STREET, PHILADELPHIA, PA 19107

REFLECTED CEILING PLAN - ROOM P (EXHIBIT)

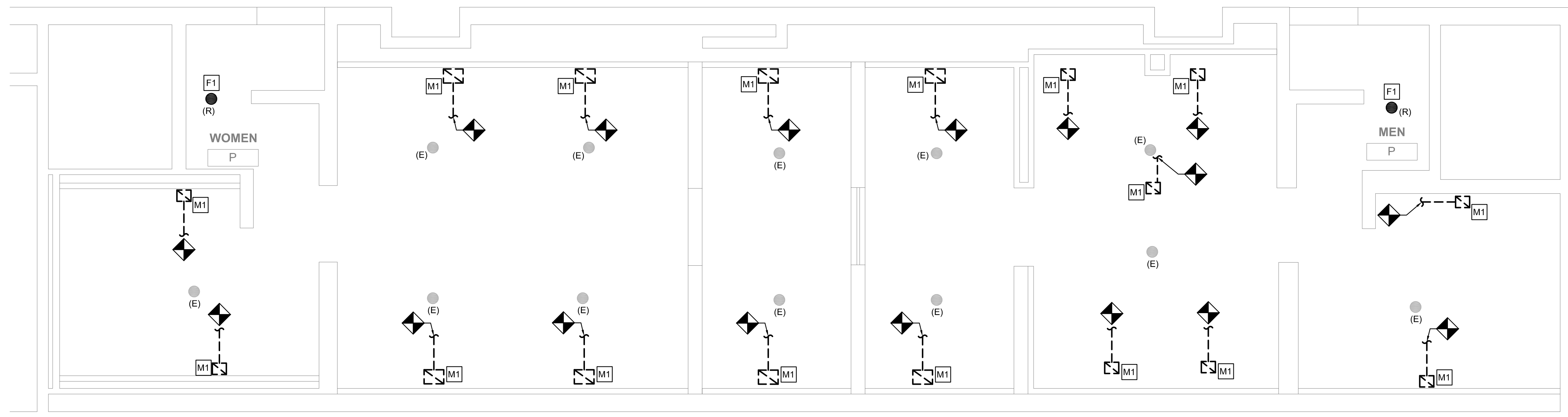
Project number CW1615
 Date November 25, 2019
 Drawn by DG, WB
 Checked by DM

M607

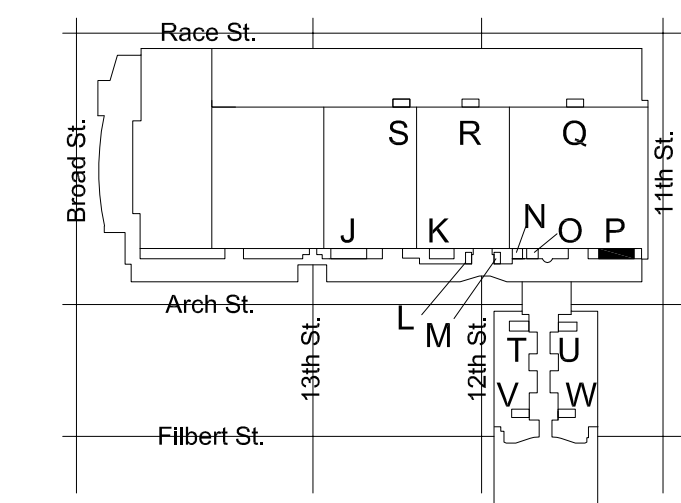
Scale 1/4" = 1'-0"



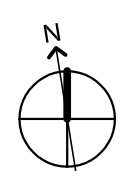
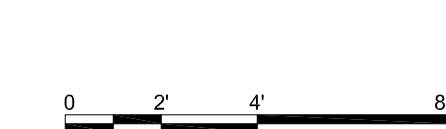
2 REFLECTED CEILING PLAN - MEN'S & WOMEN'S ROOM P
 SCALE: 1/4" = 1'-0"



1 DEMO PLAN - MEN'S & WOMEN'S ROOM P
 SCALE: 1/4" = 1'-0"



KEY PLAN - LEVEL 200 NTS



EXHAUST VENTILATION - TOILET ROOM A2					
ROOM TYPE	ROOM NAME	TOTAL NUMBER OF WC'S AND URS	EXHAUST AIR (CFM PER FIXTURE)	EXHAUST AIR (CFM REQUIRED)	EXHAUST AIR (CFM PROVIDED)
TOILET ROOM-PUBLIC	MEN	10	70	700	800
TOILET ROOM-PUBLIC	WOMEN	10	70	700	800

NOTES:
 1. EXHAUST PROVIDED PER SECTION 403 OF THE 2015 IMC (PER PA UCC).
 2. EXHAUST RUNS CONTINUOUSLY DURING OCCUPIED PERIOD.

GENERAL NOTES

- REFER TO DRAWING M001 FOR GENERAL NOTES, ABBREVIATIONS AND LEGENDS.
- REFER TO DRAWING M200 FOR SCHEDULES AND DETAILS.
- EXISTING SPRINKLER HEADS SHALL NOT BE RE-INSTALLED. REUSING SPRINKLER HEADS REMOVED WITHIN PROJECT SCOPE IS PROHIBITED.
- ALL SPRINKLERS SHALL BE CONCEALED SPRINKLER HEADS. SPRINKLER FINISH SHALL BE COORDINATED WITH THE ARCHITECT.
- DUCT SIZES AS NOTED ARE FROM HISTORICAL DRAWINGS. CONTRACTOR SHALL VERIFY ALL SIZES ARE AS SHOWN PRIOR TO START OF WORK. PROVIDE NEW/REPLACE OR MODIFY AS REQUIRED.
- KEYED NOTES MAY NOT APPEAR IN ALL PLAN VIEWS.

NEW WORK KEYED NOTES

- (M1) PROVIDE NEW CEILING MOUNTED LINEAR SLOT GRILLE FOR TOILET ROOM EXHAUST. CONNECT TO EXISTING EXHAUST DUCTWORK. PROVIDE TRANSITION FROM EXISTING TO NEW. RE-BALANCE EXHAUST SYSTEM AS NOTED ON DRAWING AND IN ACCORDANCE WITH 2018 IMC. WHERE NOTED BY ARCHITECT, GRILLE COLOR TO MATCH SOFFIT COLOR. CONTRACTOR TO PAINT FLAT BLACK THE ENTIRE INTERIOR OF PLENUM BOX AND ANY VISIBLE DUCTWORK.
- (M2) PROVIDE NEW CEILING MOUNTED TRANSFER GRILLE.
- (M3) PROVIDE SPACER SECTIONS FOR CONTINUITY OF GRILLE FOR CONTINUOUS GRILLE APPEARANCE IN SOFFIT. CONTRACTOR TO PROVIDE BLANK OFF PANELS ABOVE GRILLES TO OBSCURE STRUCTURE ABOVE FROM VIEW.
- (F1) PROVIDE NEW CONCEALED SPRINKLER HEAD. CONTRACTOR SHALL REUSE AS MUCH OF THE EXISTING SPRINKLER BRANCH PIPING AS POSSIBLE TO ACCOMMODATE NEW SPRINKLER HEAD LOCATION CONDITIONS. WHERE NOT ABLE TO REUSE EXISTING PIPING, NEW PIPING SHALL BE PROVIDED.
- (F2) EXISTING SPRINKLER HEAD SHALL REMAIN UNLESS SPRINKLER HEAD IS REMOVED. WHERE SPRINKLER HEAD IS REMOVED, CONTRACTOR SHALL REUSE AS MUCH OF THE EXISTING SPRINKLER BRANCH PIPING AS POSSIBLE AND PROVIDE NEW CONCEALED SPRINKLER HEAD. REFER TO DRAWING SHEET M200, DETAIL 1 FOR TYPICAL MODIFICATION.

PRE-DEMOLITION BALANCING NOTE

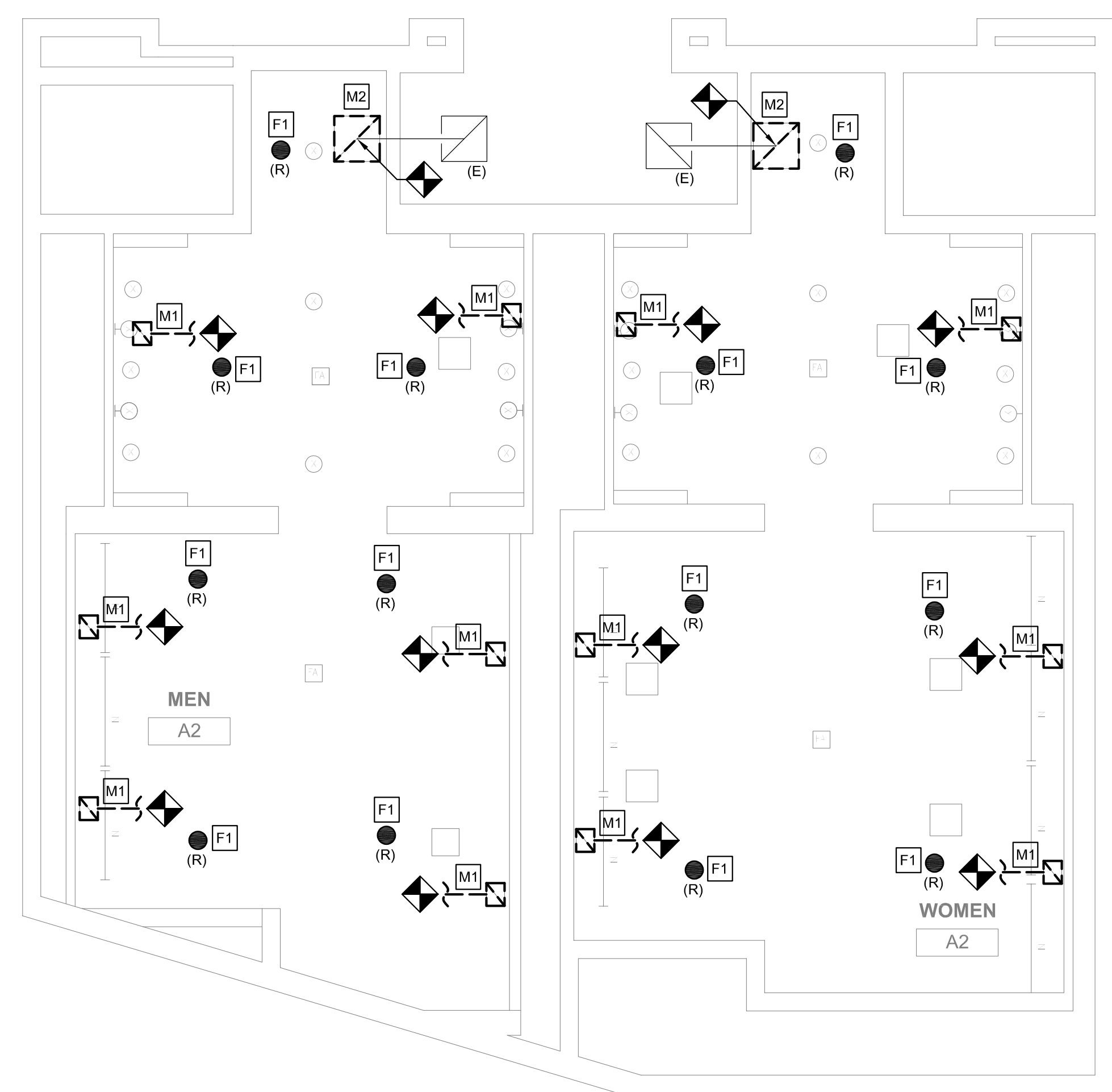
PRIOR TO START OF ANY WORK, MEASURE AND RECORD EXISTING EXHAUST AIRFLOWS THRU EXISTING GRILLES. SUBMIT PRE-DEMOLITION BALANCING REPORT TO ENGINEER PRIOR TO STARTING ANY WORK. VERIFY (E) BALANCING PROVISIONS AND PROVIDE NEW/ADDITIONAL BALANCING DAMPERS, ETC AS REQUIRED TO BALANCE NEW INSTALLATION TO VALUES INDICATED.

DEMOLITION KEYED NOTES

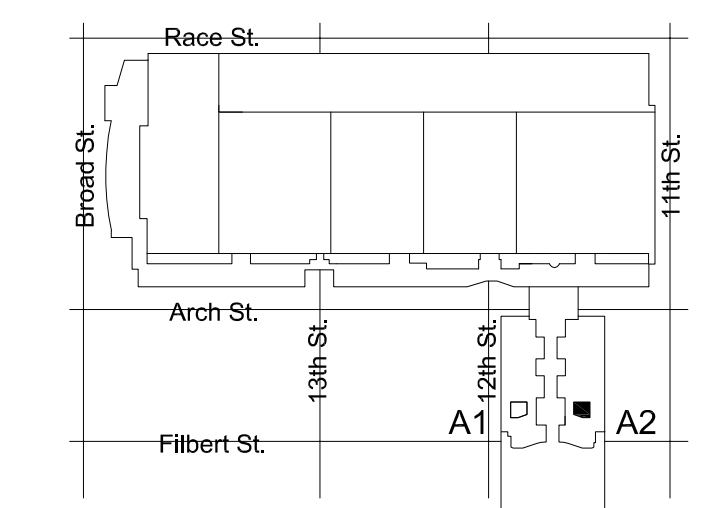
- (M1) REMOVE EXISTING EXHAUST GRILLE. PREPARE DUCT FOR INSTALLATION OF NEW GRILLE. REFER TO ARCHITECTURAL PLAN FOR NEW CEILING HEIGHT. REFER TO NEW WORK PLAN FOR NEW GRILLE LOCATION.
- (M2) REMOVE TRANSFER AIR GRILLE. PREPARE DUCT FOR INSTALLATION OF NEW GRILLE. REFER TO ARCHITECTURAL PLAN FOR NEW CEILING HEIGHT. REFER TO NEW WORK PLAN FOR GRILLE LOCATION.
- (F1) REMOVE SPRINKLER HEAD. REMOVE EXISTING BRANCH LINES, FITTINGS, ETC. BACK TO EXISTING ELBOW OR TEE. REUSE AS MUCH OF THE EXISTING MAINS AS POSSIBLE. REFER TO DRAWING SHEET M200, DETAIL 1 FOR TYPICAL MODIFICATION.



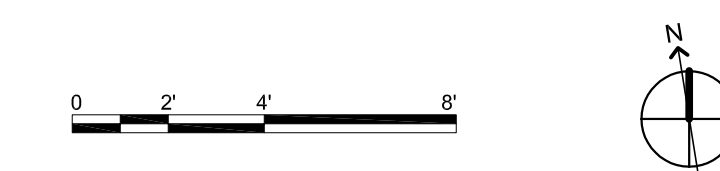
2 REFLECTED CEILING PLAN - MEN'S & WOMEN'S ROOM A2
 M624 SCALE: 1/4" = 1'-0"



1 DEMO PLAN - MEN'S & WOMEN'S ROOM A2
 M624 SCALE: 1/4" = 1'-0"



KEY PLAN - BALLROOM LEVEL NTS



MEP ENGINEERS:



Arora Engineers, Inc.
 61 Wilmington West Chester Pike | Chadds Ford, PA 19317
 P (610) 459-7900 | F (610) 459-7950 | aroraengineers.com

Contact: Kevin Sultanik
 e-mail: ksultanik@aroraengineers.com

STRUCTURAL ENGINEERS:

CSA GROUP
 1341 NORTH DELAWARE AVENUE,
 SUITE 507
 PHILADELPHIA, PA 19125

Ph: 215.427.8700
 Fax: 215.427.8752

Contact: Wing Au
 e-mail: wau@csagroup.com



REVISIONS:

No.	Description	Date

PENNSYLVANIA CONVENTION CENTER
RESTROOM RENOVATIONS
 1101 ARCH STREET, PHILADELPHIA, PA 19107

REFLECTED CEILING PLAN - ROOM A2 (BALLROOM)

Project number CW1615
 Date November 25, 2019
 Drawn by DG, WB
 Checked by DM

M624

Scale 1/4" = 1'-0"

MEP ENGINEERS:



Arora Engineers, Inc.
 61 Wilmington West Chester Pike | Chadds Ford, PA 19317
 P (610) 459-7900 | F (610) 459-7950 | aroraengineers.com

Contact: Kevin Sultanik
 e-mail: ksultanik@aroraengineers.com

STRUCTURAL ENGINEERS:
 CSA GROUP
 1341 NORTH DELAWARE AVENUE,
 SUITE 507
 PHILADELPHIA, PA 19125

Ph: 215.427.8700
 Fax: 215.427.8752

Contact: Wing Au
 e-mail: wau@csagroup.com



REVISIONS:

No.	Description	Date

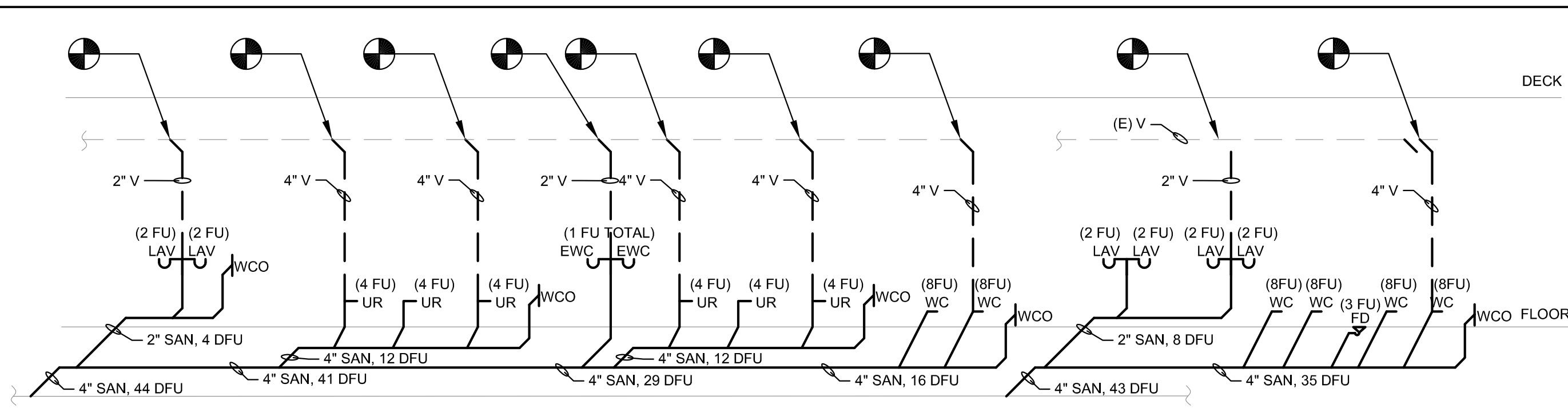
PENNSYLVANIA CONVENTION CENTER
RESTROOM RENOVATIONS
 1101 ARCH STREET, PHILADELPHIA, PA 19107

PLUMBING RISERS

Project number CW1615
 Date November 25, 2019
 Drawn by DG
 Checked by DM

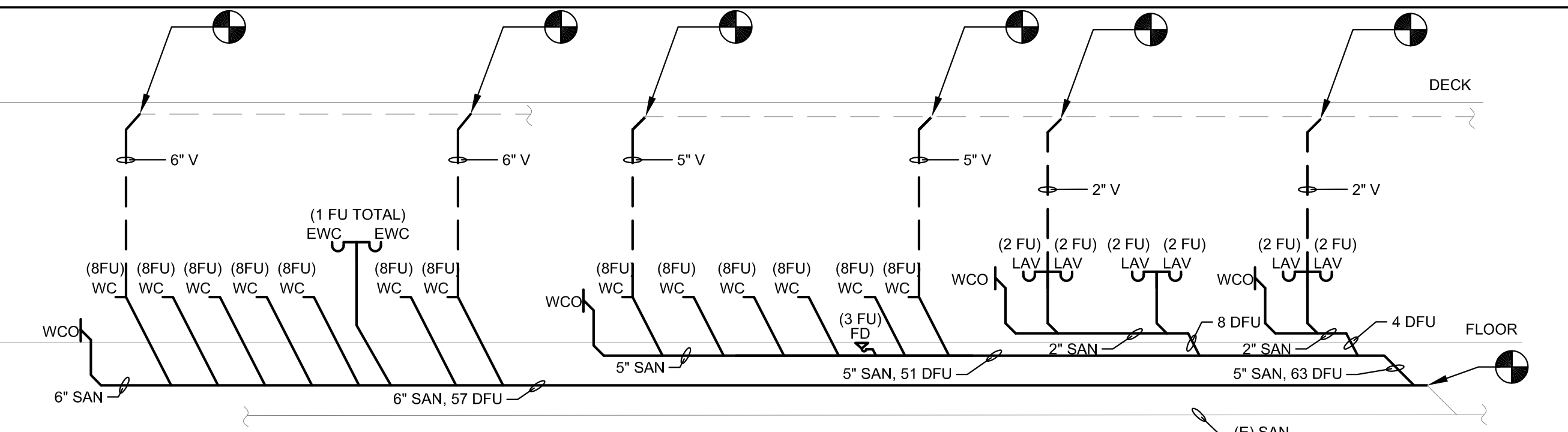
M802

Scale



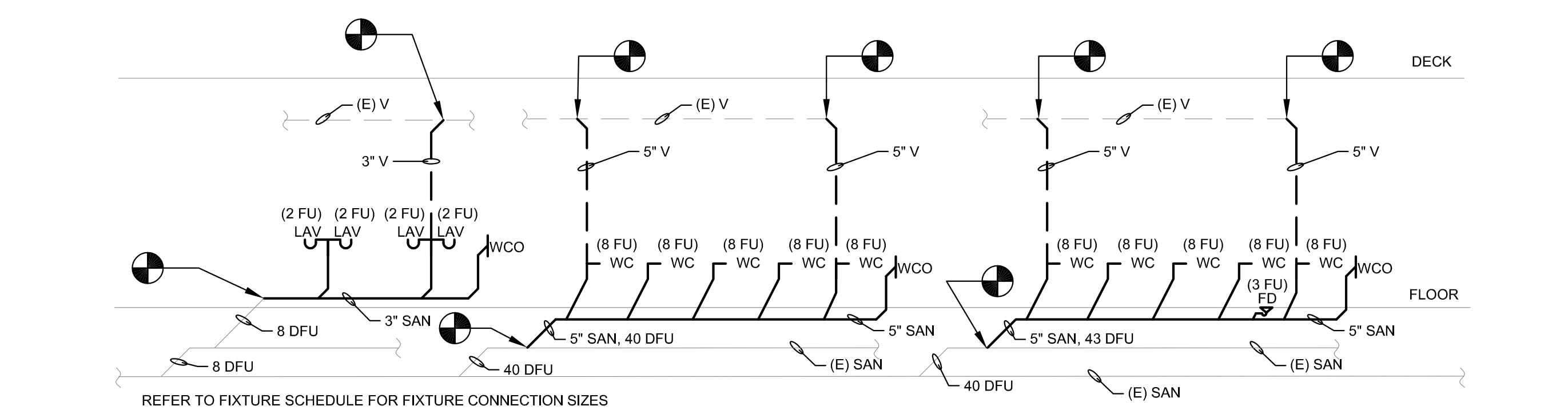
REFER TO FIXTURE SCHEDULE FOR FIXTURE CONNECTION SIZES

M802 SANITARY RISER MEN'S ROOM K
 SCALE: NOT TO SCALE



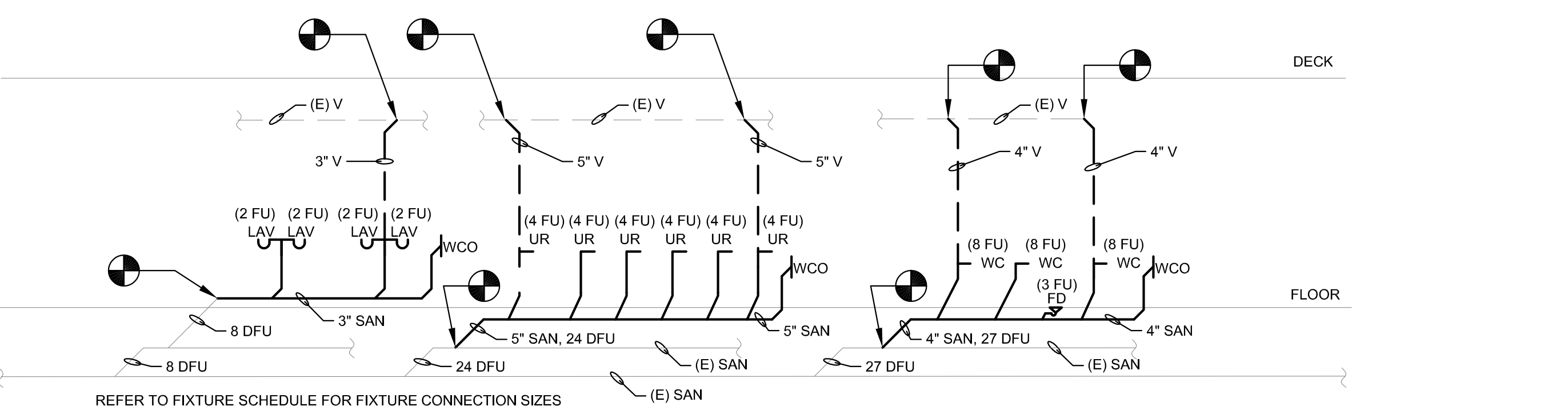
REFER TO FIXTURE SCHEDULE FOR FIXTURE CONNECTION SIZES

1B M802 SANITARY RISER WOMEN'S ROOM K
 SCALE: NOT TO SCALE



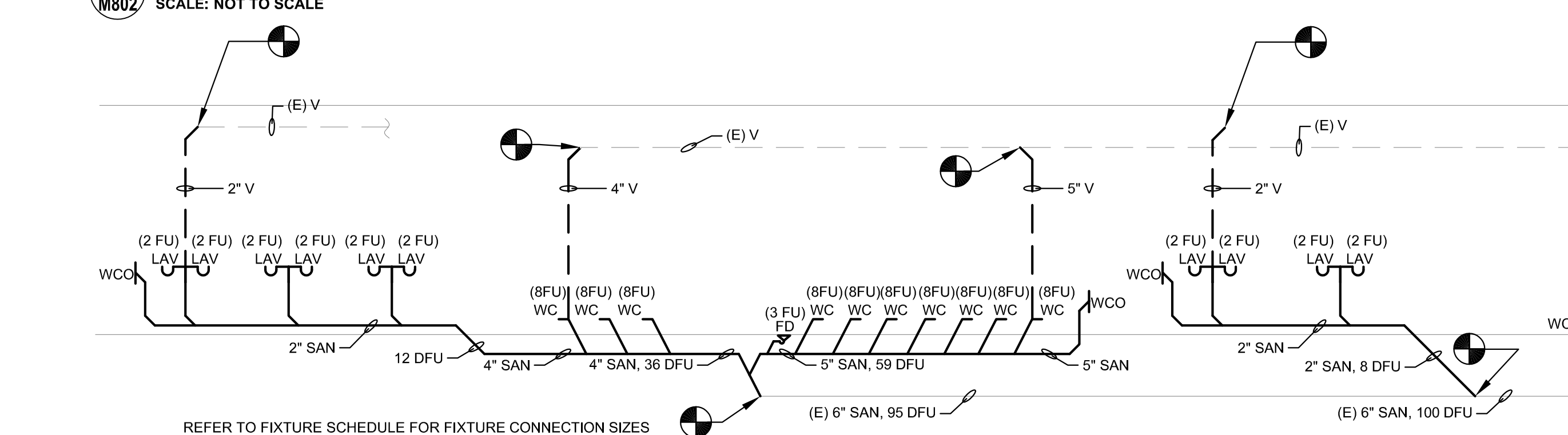
REFER TO FIXTURE SCHEDULE FOR FIXTURE CONNECTION SIZES

2 M802 SANITARY RISER WOMEN'S ROOM N
 SCALE: NOT TO SCALE



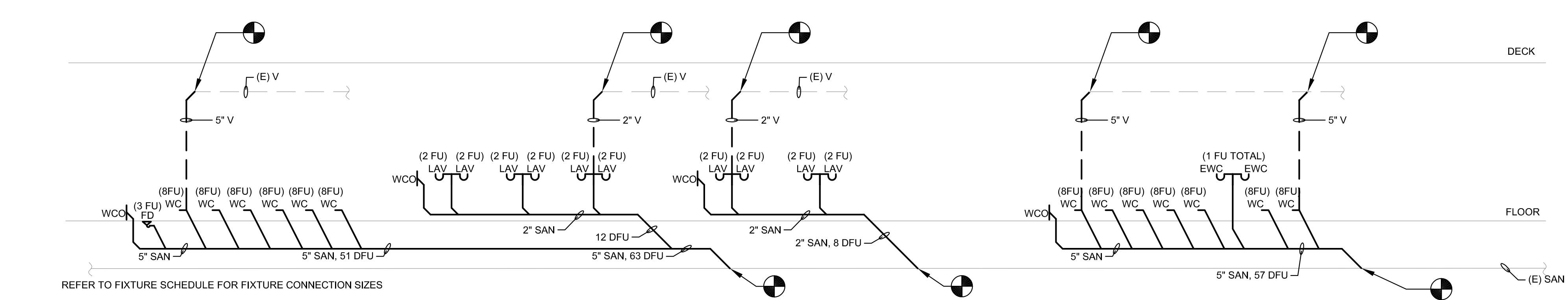
REFER TO FIXTURE SCHEDULE FOR FIXTURE CONNECTION SIZES

3 M802 SANITARY RISER MEN'S ROOM O
 SCALE: NOT TO SCALE



REFER TO FIXTURE SCHEDULE FOR FIXTURE CONNECTION SIZES

4A M802 SANITARY RISER MEN'S ROOM P
 SCALE: NOT TO SCALE



REFER TO FIXTURE SCHEDULE FOR FIXTURE CONNECTION SIZES

4B M802 SANITARY RISER WOMEN'S ROOM P
 SCALE: NOT TO SCALE

GENERAL NOTES

- REFER TO DRAWING M001 FOR GENERAL NOTES, ABBREVIATIONS AND LEGENDS.
- REFER TO DRAWING M200 FOR SCHEDULES AND DETAILS.
- PIPE SIZES AS NOTED ARE FROM HISTORICAL CONSTRUCTION DOCUMENTS DATED BETWEEN 1990 AND 1992. CONTRACTOR SHALL VERIFY ALL SIZES ARE AS SHOWN PRIOR TO START OF WORK. PROVIDE NEW, REPLACE OR MODIFY AS REQUIRED.

GENERAL ELECTRICAL NOTES

- ALL WORK SHALL BE IN ACCORDANCE WITH ALL APPLICABLE LAWS, CODES, AND REGULATIONS ADOPTED BY MUNICIPAL, COUNTY, STATE, AND FEDERAL AUTHORITIES, INCLUDING THE LATEST ADOPTED EDITION OF THE NATIONAL ELECTRICAL CODE (NEC) NFPA 70, AND WITH THE REQUIREMENTS/AMENDMENTS OF THE LOCAL AUTHORITY HAVING JURISDICTION (AHJ).
- CONTRACT DRAWINGS ARE DIAGRAMMATIC IN NATURE AND ARE INTENDED TO CONVEY SCOPE, DESIGN INTENT, AND GENERAL ARRANGEMENT ONLY. CONTRACTOR IS RESPONSIBLE FOR COORDINATING ALL WORK OF ALL TRADES INCLUDING RESOLUTION OF FIELD CONFLICTS THAT MAY ARISE.
- EACH FEEDER AND BRANCH CIRCUIT SHALL INCLUDE AN INSULATED EQUIPMENT GROUNDING CONDUCTOR, BOND ALL ELECTRICAL EQUIPMENT, OUTLET BOXES, GROUNDING TYPE RECEPTACLES, ETC., IN ACCORDANCE WITH NEC ARTICLE 250.
- MULTI-WIRE BRANCH CIRCUITS SHALL NOT BE PERMITTED. EACH 120V AND 277V BRANCH CIRCUIT SHALL INCLUDE DEDICATED NEUTRAL AND INSULATED GROUNDING CONDUCTORS. BOND ALL ELECTRICAL EQUIPMENT, OUTLET BOXES, GROUNDING TYPE RECEPTACLES, ETC., IN ACCORDANCE WITH NEC ARTICLE 250.
- TROUGHS, JUNCTION AND PULL BOXES ARE NOT NECESSARILY INDICATED, BUT SHALL BE PROVIDED WHERE MANDATED BY THE NEC, AND AS REQUIRED FOR EASE OF INSTALLATION. BOXES SHALL BE SIZED (MINIMUM) IN ACCORDANCE WITH NEC ARTICLE 314. TROUGHS SHALL BE SIZED PER NEC ARTICLE 366.
- FEEDER AND BRANCH CIRCUIT WIRING ARE DEPICTED BY ASSIGNMENT OF CIRCUIT NUMBERS, INTERCONNECTING WIRING AND HOMERUNS, OR HOMERUNS ONLY (FOR SINGULAR LOADS). ALL FEEDERS AND BRANCH CIRCUITS ARE NEW TO BE PROVIDED UNDER THIS CONTRACT UNLESS OTHERWISE NOTED. INTERIOR WIRING SHALL BE INSTALLED IN RIGID METALLIC CONDUIT AND/OR EMT, 3/4" MINIMUM. FLEXIBLE METAL CONDUIT, LIQUID-TIGHT FLEXIBLE METAL CONDUIT, OR MC CABLE SHALL BE UTILIZED IN LIMITED LENGTHS AS NECESSARY, OR AS REQUIRED/ALLOWED BY CODE.
- ALL NEW 600V OVER-CURRENT PROTECTIVE DEVICES SHALL HAVE INTERRUPTING CAPABILITIES OR RATINGS (AIC OR AIR) IN RMS AMPERES SYMMETRICAL. ALL DEVICES SHALL BE FULLY RATED FOR AVAILABLE FAULT CURRENT. ALL PANELBOARDS, SWITCHBOARDS, MDPS, DEVICES, ETC. SHALL BE FULLY RATED.
- ALL BUILDING WIRE SHALL BE COPPER CONDUCTORS, TYPE THHN/THWN (DUAL LISTED) 90 DEGREE CELSIUS RATED INSULATION, #12 AWG MINIMUM, UTILIZE #10 AWG WIRE FOR ANY 15A OR 20A, 120V CIRCUIT THAT EXCEEDS 100 FEET FROM SOURCE TO LAST DEVICE OR OUTLET.
- DO NOT THROUGH-FEED WITH GFCI RECEPTACLES FOR DOWNSTREAM DEVICE PROTECTION. EACH WIRING DEVICE REQUIRED TO HAVE GFCI PROTECTION SHALL BE STAND-ALONE.
- CONTRACTOR SHALL PROVIDE AND INSTALL AN APPROVED, UL LISTED, FIRE STOP SEALANT, TOTALLY ENCLOSING ALL PENETRATIONS THROUGH RATED CEILINGS, WALLS, ROOFS, FLOORS, ETC. ALL FLOOR PENETRATIONS SHALL BE CORE-DRILLED, SLEEVED AND SEALED WITH AN APPROVED FIRE RATED SEALANT. CONTRACTOR SHALL SUBMIT LETTER TO OWNER THAT THE REQUIRED FIRE SEALANT WAS INSTALLED PER MANUFACTURER'S REQUIREMENTS. ALL EXISTING PENETRATIONS BETWEEN FLOORS AND WALLS MUST BE CLOSED TO MAINTAIN FIRE RATING.
- THE CONTRACTOR SHALL PERFORM THE WORK AS INDICATED ON THE DRAWINGS AND SPECIFICATIONS. ANY DEVIATIONS FROM THE DRAWINGS SHALL BE SUBMITTED TO THE ENGINEER FOR REVIEW AND APPROVAL IN WRITING. IF CHANGES ARE MADE WITHOUT THE ENGINEER'S WRITTEN CONSENT, THE CONTRACTOR SHALL BE LIABLE FOR ANY ISSUES THAT MAY ARISE DUE TO THE CHANGES.
- UNLESS OTHERWISE NOTED, ALL WIRE SIZES SHALL BE BASED ON THE FOLLOWING:
 - #14 THROUGH #1 OR 100A OR LESS - TABLE 310.16 60° COLUMN
 - #1/0 AND GREATER OR 101A OR GREATER - TABLE 310.16 75° COLUMN
 - OTHER ALLOWANCES OF 110.14(C)
- UNLESS OTHERWISE NOTED, ALL CONDUIT SIZES SHALL BE BASED ON EMT, RMC, OR RNC (PVC SCHEDULE 40).
- ALL ELECTRICAL MATERIALS, DEVICES, APPLIANCES AND EQUIPMENT SHALL BE NEW, LABELED AND LISTED BY A NATIONALLY RECOGNIZED TESTING LABORATORY OR AGENCY (E.G. UL), UNLESS OTHERWISE NOTED.
- ELECTRICAL CONTRACTOR SHALL FOLLOW ALL MANUFACTURER'S INSTRUCTIONS FOR INSTALLATION OF ALL EQUIPMENT IF NOT INDICATED ON DRAWINGS. IF THERE IS A DISCREPANCY, MANUFACTURER'S INSTRUCTIONS TAKE PRECEDENCE.
- THE EC SHALL FURNISH ALL EQUIPMENT, LABOR, SERVICES, AND MATERIALS REQUIRED FOR COMPLETE INSTALLATION OF THE WORK INDICATED. UNLESS OTHERWISE NOTED, ALL MATERIALS SHALL BE NEW.
- REWORK EXISTING EMERGENCY CIRCUITS AS INDICATED FOR NEW LAYOUT.
- PROVIDE ACCESS PANELS AS REQUIRED FOR ACCESS TO EQUIPMENT.
- ALL WIRING, EQUIPMENT, STARTERS AND CONTROLS SHALL CONFORM TO THE NATIONAL ELECTRIC CODE AND TO THE REQUIREMENTS OF THE LOCAL UTILITY COMPANY.
- NEW LIGHT SWITCHING IS TO CONTROL 50% ILLUMINATION OF LIGHT FIXTURE PER ENERGY CODE. MOTION ACTIVATION WITH ENERGY EFFICIENT AUTO SHUT OFF MAY BE SUBSTITUTED. MOTION ACTIVATION WILL ELIMINATE DUPLICATE WIRING AND SWITCHING, INDICATED ON PLAN.
- ALL WIRING METHODS SHALL BE NEC COMPLIANT AND MEET THE REQUIREMENTS OF THE SPACE, OCCUPANCY & CONDITION OF USE.
- DO NOT SCALE DRAWINGS. CONTRACTOR SHALL VERIFY AND CONFIRM ALL DIMENSIONS IN THE FIELD AND NOTIFY THE ENGINEER OF ANY AND ALL DISCREPANCIES ON THE DRAWINGS. COPIES OF THIS DRAWING WITHOUT A PROFESSIONAL ENGINEER'S SEAL AND ORIGINAL SIGNATURE SHALL NOT BE CONSIDERED VALID AND ARE FOR CONVENIENCE TO THE USER AT THEIR OWN RISK.
- ALL NEW BREAKERS AND/OR DEVICES BEING INSTALLED IN EXISTING ELECTRICAL PANELS OR EQUIPMENT SHALL MATCH THE CHARACTERISTICS OF THE EXISTING EQUIPMENT IN MANUFACTURER, TYPE, MINIMUM SHORT CIRCUIT RATING, ETC.
- FURNISH ALL NECESSARY MATERIALS, TOOLS AND LABOR AND INSTALL A COMPLETE AND FULLY OPERABLE WIRING SYSTEM AS INDICATED OR REASONABLY IMPLIED. ALL OUTLETS SHALL BE FULLY CONNECTED TO SOURCES OF CURRENT SUPPLY AND LEFT READY FOR USE. UNLESS NOTED OTHERWISE, ALL MATERIALS SHALL BE NEW, FREE OF DEFECTS AND BE UL LISTED.
- CONTRACTOR SHALL MEET INSTALLATION CRITERIA FOR SEISMIC REQUIREMENTS IN PROJECT LOCATION.
- WITH RESPECT TO CONSTRUCTION BASED ON THESE DRAWINGS, THE EC IS ULTIMATELY RESPONSIBLE FOR ALL INSTALLED MEANS AND METHODS MEETING ALL APPLICABLE CODES AND STANDARDS.
- ALL SWITCHES AND CIRCUIT BREAKERS INSTALLED IN WET AND DAMP LOCATIONS SHALL MEET NEC 404.4.
- IN OTHER THAN DWELLING OCCUPANCIES, ALL ELECTRICAL EQUIPMENT THAT IS LIKELY TO REQUIRE EXAMINATION, ADJUSTMENT, SERVICING, OR MAINTENANCE WHILE ENERGIZED SHALL BE FIELD MARKED PER NEC 110.16.
- UNLESS OTHERWISE NOTED, ALL CIRCUIT BREAKERS ARE BASED ON INVERSE TIME TYPE AND ALL FUSES ARE BASED ON DUAL ELEMENT TIME-DELAY TYPE.
- EACH CONTRACTOR SHALL REVIEW ALL PROJECT DOCUMENTS OF ALL TRADES AND REVIEW ALL PROJECT REQUIREMENTS PRIOR TO BIDDING. DISCREPANCIES BETWEEN DOCUMENTS SHALL BE REPORTED BEFORE BIDS ARE DUE TO ALLOW FOR RESOLUTION AS REQUIRED.
- THE EC SHALL VISIT SITE AND BECOME FAMILIAR WITH ALL EXISTING CONDITIONS THAT MAY AFFECT HIS WORK. THE EC SHALL NOT BE ENTITLED TO CHANGE ORDER(S) DUE TO FAILURE TO COMPLY.
- CONTRACTOR SHALL SUBMIT SHOP DRAWINGS ON ALL EQUIPMENT AND MATERIAL (AND METHODS WHEN SPECIFICALLY REQUESTED) BEING USED IN THE COURSE OF THE WORK. A MINIMUM OF SEVEN (7) COPIES AND/OR AS REQUEST BY OWNER SHALL BE SUBMITTED FOR REVIEW. PURCHASE OF OR INSTALLATION OF MATERIALS OR SYSTEM PARTS SHALL NOT PROCEED UNTIL REVIEWED SHOP DRAWINGS/CATALOG CUTS ARE RETURNED TO THE SUBMITTING CONTRACTOR. ACCESSORIES SCHEDULED SHALL BE PROVIDED BY THE UNIT MANUFACTURER OR, IF NOT A FACTORY STANDARD, BY THE CONTRACTOR.
- REFER TO ARCHITECTURAL REFLECTED CEILING PLAN (RCP) FOR EXACT AND FINAL LOCATIONS OF ALL CEILING MOUNTED DEVICES AND APPURTENANCES, INCLUDING BUT NOT LIMITED TO LIGHT FIXTURES, EXIT SIGNAGE, ETC, VERIFY IN FIELD.
- COORDINATE WITH OTHER TRADES FOR ROUGH-IN SUPPORT AS REQUIRED.
- ALL WORK SHALL BE SCHEDULED AND COORDINATED WITH THE OWNER SO THAT DISRUPTION TO THE AREAS INVOLVED OR OTHER PARTS OF THE BUILDING ARE KEPT TO A MINIMUM. CONTRACTOR SHALL GIVE OWNER A MINIMUM OF FIVE (5) WORKING DAYS NOTICE OF ANY AND ALL WORK THAT WILL INTERFERE WITH OWNER'S OPERATIONS SO A SCHEDULE SUITABLE TO THE OWNER CAN BE ARRANGED.
- PRIOR TO ACCEPTANCE OF THE SPACE, ALL SYSTEMS SHALL BE TESTED, BALANCED AND OPERATED TO DEMONSTRATE TO THE OWNER THAT THE INSTALLATION AND PERFORMANCE OF THE INSTALLED SYSTEMS AND/OR PARTS THEREOF CONFORM TO THE DESIGN INTENT.
- THE CONTRACTOR SHALL GUARANTEE THE ENTIRE INSTALLATION FOR A MINIMUM PERIOD OF ONE YEAR (EXCEPT WHERE EXTENSIONS OF THIS ONE YEAR PERIOD ARE NOTED) FROM THE DATE OF ACCEPTANCE OF THE SYSTEM AS A WHOLE. ANY DEFECTS IN WORKMANSHIP, MATERIALS, MALFUNCTION OF EQUIPMENT OR UNSATISFACTORY PERFORMANCE, AND ALL OTHER PARTS OF THE BUILDING DAMAGED THEREBY, SHALL BE REPAIRED, REPLACED OR OTHERWISE REMEDIED WITHOUT EXPENSE TO THE OWNER. SUCH REPAIRS OR REPLACEMENTS SHALL BE MADE IN A TIMELY MANNER AND AT THE CONVENIENCE OF THE OWNER.
- UPON COMPLETION OF THE CONTRACT, THE CONTRACTOR SHALL PROVIDE THE OWNER WITH THREE (3) COMPLETE SETS OF MANUFACTURER'S OPERATING, MAINTENANCE AND PREVENTIVE MAINTENANCE INSTRUCTIONS (IN BOUND BOOK FORM) INCLUDING PARTS LIST, AND COMPLETE PROCUREMENT INFORMATION SPECIFYING EQUIPMENT NUMBERS AND DESCRIPTIONS. OPERATING STAFF PERSONNEL SHALL BE INSTRUCTED AS TO PROPER OPERATING AND SERVICE REQUIREMENTS OF THE SYSTEMS AND EQUIPMENT.
- CONTRACTOR SHALL UPON COMPLETION OF THE WORK, SUBMIT A SET OF RECORD DRAWINGS SHOWING ALL BURIED OR CONCEALED EQUIPMENT OF PARTS OF THE WORK.
- EACH TRADE CONTRACTOR SHALL PROVIDE AND INSTALL AN APPROVED FIRE STOP SEALANT, TOTALLY ENCLOSING ALL PENETRATIONS THROUGH CEILINGS, WALLS, ROOFS AND FLOORS.
- EACH TRADE CONTRACTOR SHALL COORDINATE THE ELECTRICAL REQUIREMENTS OF HIS/HER WORK WITH THE PROJECT ELECTRICAL CONTRACTOR PRIOR TO SHOP DRAWING SUBMISSION.
- UPON COMPLETION OF ALL WORK, THOROUGHLY CLEAN ALL SYSTEMS OF OBSTRUCTIONS, DEBRIS, SCALE, DUST, DIRT, ETC. AND PLACE SYSTEMS IN OPERATION.
- THE INTENT OF THE PROJECT IS TO INSTALL NEW EQUIPMENT AS SHOWN ON THE DRAWING AND TO FEED THE NEW EQUIPMENT FROM THE EXISTING ELECTRIC DISTRIBUTION SYSTEM. ALL OTHER ELECTRICAL ITEMS IN THE BUILDING ARE EXISTING. EC IS TO CONNECT EQUIPMENT AS SHOWN, AND TAKE LOAD READINGS TO VERIFY THAT THE EXISTING ELECTRIC DISTRIBUTION SYSTEM CAN SUPPORT ADDITIONAL LOAD. IF NOT, MAKE ADJUSTMENTS AS REQUIRED.
- THE CONTRACTOR SHALL APPLY FOR AND PAY FOR ALL REQUIRED PERMITS, INSPECTIONS, ETC.
- ALL EXPOSED CONDUIT SHALL BE PAINTED (1 COAT PRIMER, 2 COATS FINISH) TO MATCH ADJACENT AREA.
- CONTRACTOR SHALL PATCH AND REPAIR ALL OPENINGS LEFT IN EXISTING WALL AND/OR CEILING SURFACES BY THE REMOVAL OF EXISTING SURFACE MOUNTED AND/OR SEMI-RECESSED LIGHTING, EQUIPMENT, DEVICES, BOXES OR RACEWAYS. PAINT AND/OR FINISH REQUIRED AREAS TO MATCH ADJACENT SURFACES.
- CONTRACTOR SHALL REMOVE WIRING DEVICES WHERE SHOWN ON PLAN AND ABANDON BOXES IF THEY ARE IN EXISTING WALLS TO REMAIN. PROVIDE BLANK COVERS ON ABANDONED BOXES.
- CONTRACTOR SHALL REMOVE ABANDONED OUTLET BOXES, RACEWAYS OR CONDUIT THAT WOULD BE EXPOSED IN FINISHED AREAS, AND REPAIR DISTURBED SURFACES TO MATCH ADJACENT AREAS.
- MAINTAIN CONTINUITY OF EXISTING FIRE ALARM SYSTEM. PROVIDE TEMPORARY SERVICE AS NECESSARY. COORDINATE SHUTDOWNS WITH OWNER. RELOCATE, REROUTE, REMOVE OR ABANDON EXISTING WORK THAT INTERFERES WITH THE NEW ARRANGEMENT. REMOVE EXISTING ITEMS AS REQUIRED TO ACCOMMODATE NEW WORK.

GENERAL SYMBOLS LEGEND

	DUPLEX RECEPTACLE MOUNTED 18" AFF; NEMA 5-20R, 20A, 125V, 2P 3W. U.O.N.
	DUPLEX RECEPTACLE MOUNTED ABOVE COUNTERTOP; NEMA 5-20R, 20A, 125V, 2P 3W. U.O.N.
	GROUND FAULT CIRCUIT INTERRUPT DUPLEX RECEPTACLE; NEMA 5-20R, 20A, 125V, 2P 3W. U.O.N.
	GROUND FAULT CIRCUIT INTERRUPT DUPLEX RECEPTACLE MOUNTED UNDERNEATH COUNTERTOP; NEMA 5-20R, 20A, 125V, 2P 3W. U.O.N.
	JUNCTION BOX
	ELECTRICAL PANELBOARD
	HOMERUN TO PANELBOARD
	20A, 120/277V, RATED SINGLE TOGGLE LIGHT SWITCH
	20A, 120/277V, MOTOR RATED SINGLE TOGGLE SWITCH
	24V RATED LIGHT SWITCH OCCUPANCY SENSOR DUAL TECHNOLOGY SENSING. BASIS OF DESIGN: HUBBELL CONTROL: LHMTS1-24V-VH
	CEILING MOUNTED DUAL TECHNOLOGY OCCUPANCY SENSOR (XX## DENOTES PANEL AND BEAKER INFORMATION) BASIS OF DESIGN: HUBBELL OMNID 2000 (360°, 22" RADIUS)
	WALL MOUNTED OCCUPANCY SENSOR
	SPEAKER
	FIRE ALARM SYSTEM CEILING MOUNTED SMOKE DETECTOR
	FIRE ALARM SYSTEM CEILING MOUNTED AUDIBLE / VISUAL NOTIFICATION DEVICE, # INDICATES CANDELA, W INDICATES SPEAKER WATTAGE

LINE TYPES

	ELECTRICAL EQUIPMENT DESIGNATED BY SOLID HEAVY LINE WEIGHT INDICATES NEW WORK TO BE FURNISHED AND INSTALLED.
	ELECTRICAL EQUIPMENT DESIGNATED BY SOLID LIGHT LINE WEIGHT INDICATES EXISTING EQUIPMENT TO REMAIN, UNLESS OTHERWISE INDICATED.
	ELECTRICAL EQUIPMENT DESIGNATED BY DASHED HEAVY LINE WEIGHT REPRESENTS EXISTING EQUIPMENT TO BE REMOVED AND DISPOSED, UNLESS INDICATED TO BE REMOUNTED, RELOCATED, OR TURNED OVER TO OWNER.
	ELECTRICAL CONDUCTOR DESIGNATED BY SOLID HEAVY LINE WEIGHT INDICATES NEW WIRING FOR CIRCUITS OPERATING AT 120V OR GREATER.
	ELECTRICAL CONDUCTOR DESIGNATED BY DASHED HEAVY LINE WEIGHT INDICATES NEW WIRING FOR CIRCUITS OPERATING AT LESS THAN 120V.

APPLICABLE CODES

- NATIONAL ELECTRIC CODE 2018 (NFPA 70)
- IBC 2018 CHAPTER 27
- PA UCC
- INTERNATIONAL ENERGY CONSERVATION CODE 2018
- IEEE STD 142-1991 RECOMMENDED PRACTICE FOR GROUNDING OF INDUSTRIAL AND COMMERCIAL POWER SYSTEMS.
- NFPA 72, 2007 EDITION

ABBREVIATIONS

A	AMPERES
AC	ALTERNATING CURRENT
AF	AMPERES, FRAME
AFB	ABOVE FINISHED FLOOR
AIC	AMPERES, INTERRUPTING CAPACITY
AIR	AMPERES, INTERRUPTING RATING
ARP	AMPERES, RATING PLUG
AT	AMPERES, TRIP
ATS	AUTOMATIC TRANSFER SWITCH
AWG	AMERICAN WIRE GAUGE
B SMT	BASEMENT
C, CN D	CONDUIT
CLG	CEILING MOUNTED
CU	COPPER
CT	CURRENT TRANSFORMER
EC	ELECTRICAL CONTRACTOR
EM	EMERGENCY
EMT	ELECTRICAL METALLIC TUBING
FMC	FLEXIBLE METAL CONDUIT
G	GROUND
GFCI OR GFI	GROUND FAULT CIRCUIT INTERRUPTER
GRS	GALVANIZED RIGID STEEL
Hz	HERTZ
KA	KILO AMPERES
KCMIL	KILO CIRCULAR MILS
KVA	KILO VOLT AMPERES
KW	KILO WATTS
LFMC	LIQUID-TIGHT FLEXIBLE METAL CONDUIT
MCB	MAIN CIRCUIT BREAKER
MLO	MAIN LUGS ONLY
MOPC	MAXIMUM OVERCURRENT PROTECTION
MOPD	MAXIMUM OVERCURRENT PROTECTIVE DEVICE
MTR	MOTOR
NEC	NATIONAL ELECTRIC CODE
N.O.	NORMALLY OPEN
PH, Ø	PHASE
PT	POTENTIAL TRANSFORMER
RMC	RIGID METAL CONDUIT
RMS	ROOT-MEAN-SQUARE
RNC	RIGID NON-METALLIC CONDUIT
SCCR	SHORT CIRCUIT CURRENT RATING
SPD	SURGE PROTECTION DEVICE
SYM	SYMMETRICAL
TBD	TO BE DETERMINED
TDDE	TIME-DELAY DUAL ELEMENT (FUSES)
TYP	TYPICAL
TELE	TELEPHONE
UON	UNLESS OTHERWISE NOTED
UPS	UNINTERRUPTIBLE POWER SUPPLY
V	VOLTS
XFMR	TRANSFORMER
Z	IMPEDANCE

FIRE ALARM PHASING NOTES

- PERFORM AN INITIAL ACCEPTANCE TEST IN ACCORDANCE WITH THE TESTING PROCEDURES OUTLINED IN NFPA 72 FOR THE FIRE ALARM DEVICES IN EACH AREA OF WORK. NOTE ANY AND ALL DEFICIENCIES. ALL TEST RESULTS SHALL BE SUBMITTED TO THE ENGINEER FOR APPROVAL.
- SUBMIT SHOP DRAWING, IDENTIFY SPECIFIC TIE-IN LOCATIONS FOR FIRE ALARM DEVICES. IDENTIFY MEANS AND METHODS FOR MAINTAINING CIRCUIT CONTINUITY.
- EXTEND CIRCUITS AS REQUIRED FOR THE EXISTING CIRCUIT TIE-INS TO NEW LOCATIONS IDENTIFIED ON THE SHOP DRAWINGS.
- DISCONNECT EXISTING DEVICES AND CIRCUITS AS REQUIRED. MAINTAIN CONTINUITY OF ALL CIRCUITS BY THE APPROVED METHOD ON THE SHOP DRAWINGS.
- INSTALL NEW DEVICES TO NEW CEILING LOCATIONS AS INDICATED ON THE SHOP DRAWINGS. MAINTAIN IDENTICAL DEVICE PLACEMENT AS THE PREVIOUSLY REMOVED EXISTING DEVICES. COORDINATE ALL WORK WITH OTHER TRADES IN THE SAME AREA OF WORK.
- UPON COMPLETION OF INSTALLATION WORK, THE CONTRACTOR SHALL COORDINATE AND PERFORM ALL NECESSARY TESTING AND INSPECTIONS WITH ALL OTHER TRADES AND THE AHJ AS NECESSARY FOR A SUCCESSFUL INSPECTION. RE-TESTING AND RE-INSPECTIONS DUE TO CONTRACTOR ERROR SHALL BE AT NO ADDITIONAL COST TO THE OWNER.
- SUBMIT ALL REQUIRED CLOSEOUT DOCUMENTATION FOR APPROVAL.

MEP ENGINEERS:



Arora Engineers, Inc.
61 Wilmington-West Chester Pike | Chadds Ford, PA 19317
P (610) 459-7900 | F (610) 459-7950 | aroraengineers.com

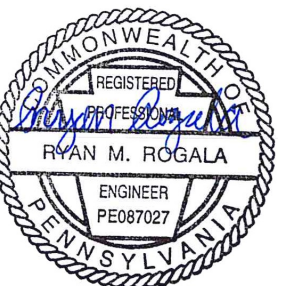
Contact: Kevin Sultanik
e-mail: ksultanik@aroraengineers.com

STRUCTURAL ENGINEERS:

CSA GROUP
1341 NORTH DELAWARE AVENUE,
SUITE 507
PHILADELPHIA, PA 19125

Ph: 215.427.8700
Fax: 215.427.8752

Contact: Wing Au
e-mail: wau@csagroup.com



REVISIONS:

No.	Description	Date

PENNSYLVANIA
CONVENTION CENTER

RESTROOM RENOVATIONS

1101 ARCH STREET, PHILADELPHIA, PA 19107

GENERAL NOTES, ABBREVIATIONS & LEGEND

Project number	CW1615
Date	November 25, 2019
Drawn by	RR,AS
Checked by	HL

E001

Scale NOT TO SCALE

MEP ENGINEERS:



Arora Engineers, Inc.
 61 Wilmington-West Chester Pike | Chadds Ford, PA 19317
 P: (610) 459-7900 | F: (610) 459-7950 | aroraengineers.com

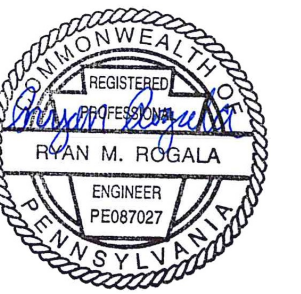
Contact: Kevin Sultanik
 e-mail: ksultanik@aroraengineers.com

STRUCTURAL ENGINEERS:

CSA GROUP
 1341 NORTH DELAWARE AVENUE,
 SUITE 507
 PHILADELPHIA, PA 19125

Ph: 215.427.8700
 Fax: 215.427.8752

Contact: Wing Au
 e-mail: wau@csagroup.com



REVISIONS:

No.	Description	Date
1	ELEC UPDATE	11/08/19

PENNSYLVANIA CONVENTION CENTER
RESTROOM RENOVATIONS
 1101 ARCH STREET, PHILADELPHIA, PA 19107

DEMOLITION & NEW FLOOR PLANS - ROOM R (EXHIBIT)

Project number: CW1615
 Date: November 25, 2019
 Drawn by: RR,AS
 Checked by: HL

E109

Scale: 1/4" = 1'-0"

GENERAL DEMOLITION NOTES

- SEE DRAWING E001 FOR GENERAL NOTES, SYMBOLS, AND ABBREVIATIONS.
- PRIOR TO THE START OF WORK, EC SHALL LOCATE ALL LIGHTING AND POWER PANEL SUPPLY CIRCUITS FOR THE WORK AREA AND RECORD PANEL AND CIRCUIT NUMBER ON RECORD DRAWINGS.
- EC SHALL FIELD INVESTIGATE EXISTING LIGHT FIXTURES TO VERIFY NORMAL AND EMERGENCY FIXTURE VOLTAGES AND ENSURE NEW LIGHTING FIXTURES ARE SELECTED WITH VOLTAGES TO MATCH EXISTING.
- EC SHALL REMOVE AND DISPOSE OF ALL LIGHT FIXTURES WITHIN THE WORK AREA. TAG AND PRESERVE EXISTING LIGHTING CIRCUITS FOR FUTURE RECONNECTION TO NEW LIGHTING FIXTURES.
- FURNISH AND INSTALL JUNCTION BOXES WHERE REQUIRED TO CONTINUE CIRCUITS OUTSIDE OF WORK AREA.
- KEYED NOTES MAY NOT APPEAR ON ALL PLAN VIEWS.

DEMOLITION KEYED NOTES

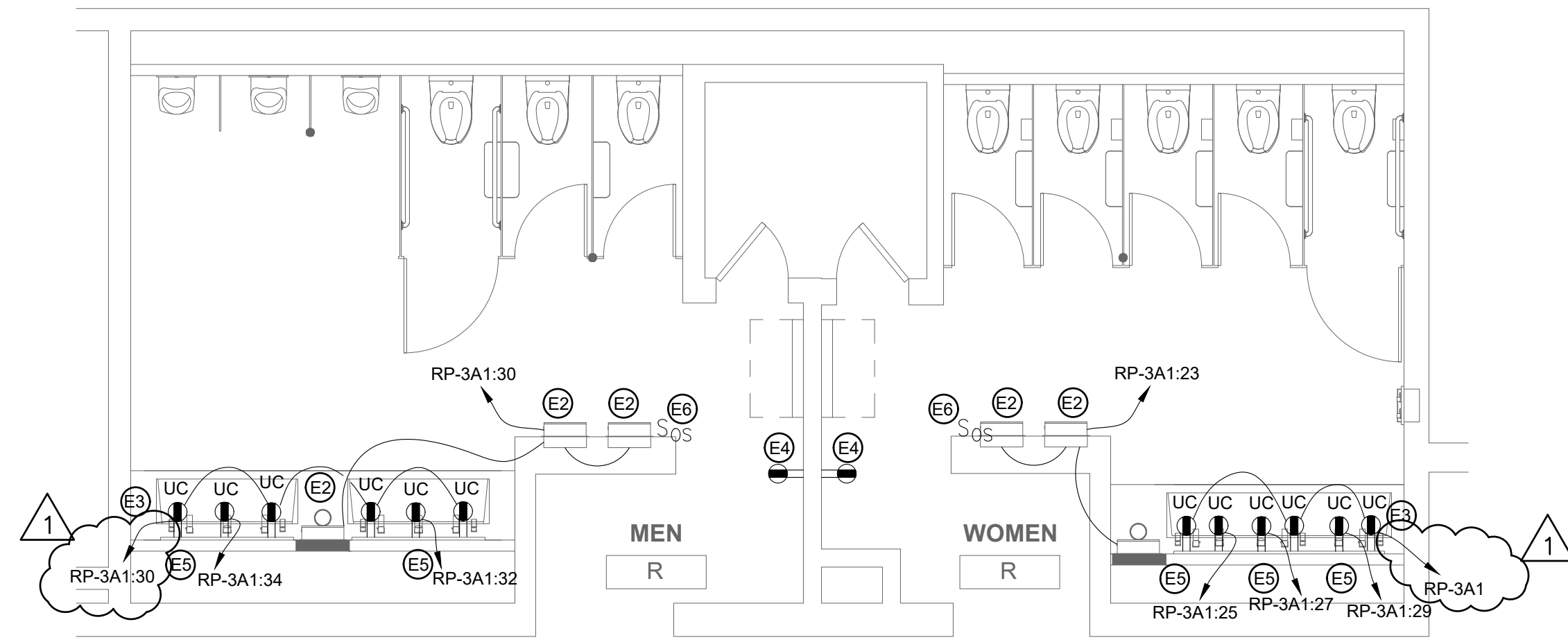
- E1** NOT USED
- E2** EC SHALL DEMOLISH EXISTING RECEPTACLE/LIGHT SWITCH, BACK BOX, CONDUIT AND WIRE. CAP WIRES ABOVE CEILING FOR SPlicing AND EXTENSION TO NEW LOCATION PER NEW WORK KEYED NOTE E4.
- E3** EC SHALL DISCONNECT AND REMOVE THE EXISTING RECEPTACLE/OCCUPANCY SENSOR SWITCH. PRESERVE THE EXISTING CONDUCTORS FOR RECONNECTION TO NEW RECEPTACLE/SWITCHING CONTROLS.
- E4** EC SHALL DISCONNECT THE POWER SUPPLY TO THE EXISTING WATER COOLERS TO BE REMOVED. PULL CONDUCTORS BACK TO NEAREST JUNCTION BOX, CUT, REMOVE AND CAP REMAINING CONDUCTORS. MAINTAIN CONTINUITY TO OTHER LOADS ON SAME CIRCUIT. CUT THE CONDUIT AT THE WATER COOLER LOCATION TO BE FLUSH WITH WALL AND CAP THE END. COORDINATE WORK WITH OTHER DISCIPLINES AS REQUIRED.

GENERAL NEW WORK NOTES

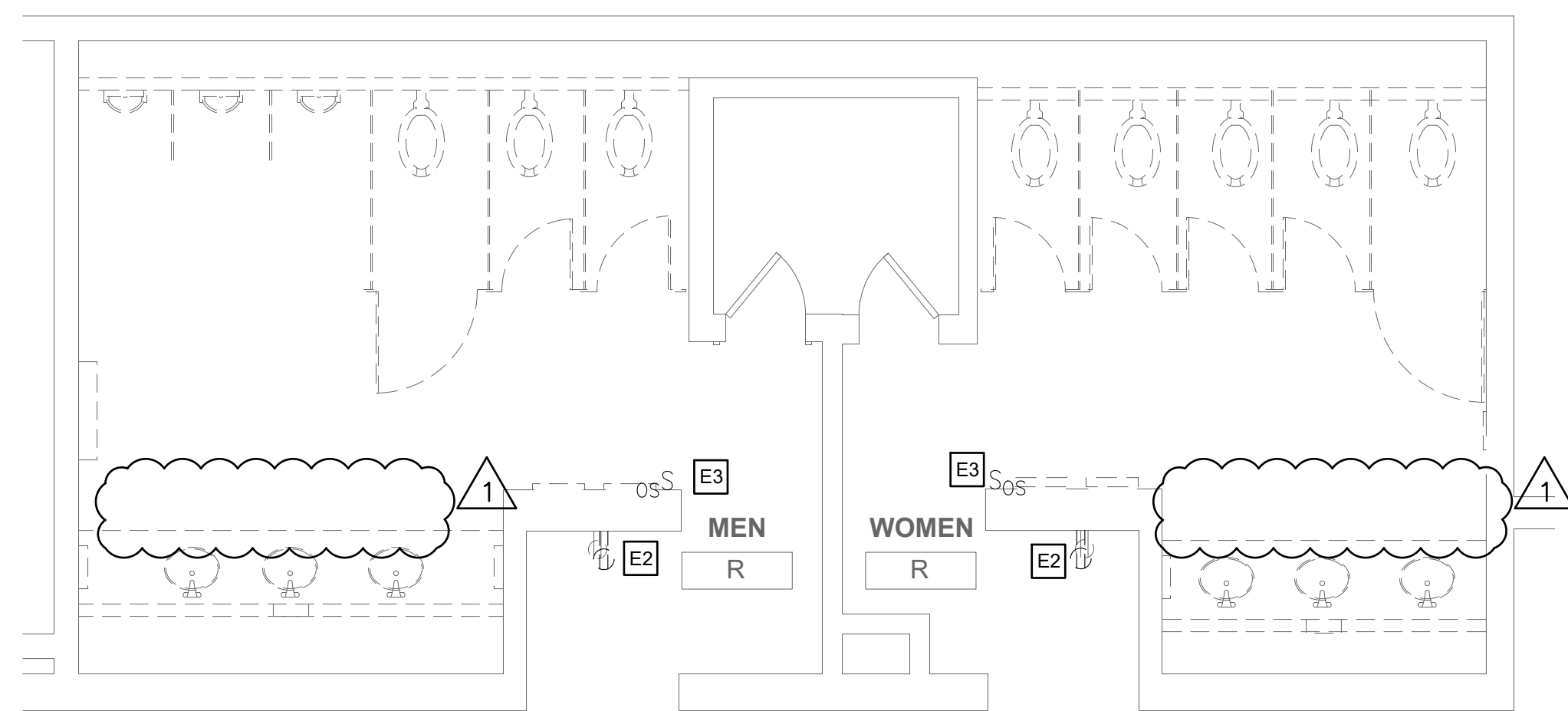
- SEE DRAWING E001 FOR GENERAL NOTES, SYMBOLS, AND ABBREVIATIONS.
- SEE THE E800 SERIES DRAWINGS FOR PANEL SCHEDULES AND CIRCUITING.
- ALL WORK SHALL BE PERFORMED IN ACCORDANCE WITH THE LATEST ADOPTED EDITION OF THE NEC.
- ALL CONDUCTORS SHALL BE CU AND THHN/THWN UNLESS OTHERWISE NOTED.
- IN NO CASE SHALL A 277V, 20A/1P CIRCUIT BE LOADED TO OVER 4.432KW OR A 120V, 20A/1P CIRCUIT BE LOADED TO OVER 1.92KW. MAKE CHANGES AS REQUIRED TO ENSURE COMPLIANT LOADING ON BREAKERS.
- EC TO COORDINATE ALL HVAC AND PLUMBING EQUIPMENT LOCATIONS IN FIELD PRIOR TO CIRCUIT INSTALLATION.
- EC TO TRACE ALL CIRCUITS BACK TO SOURCE AND TAKE LOAD READINGS ON CIRCUITS AND PANELBOARD AS REQUIRED TO VERIFY CODE COMPLIANT LOADING AFTER PROJECT IS COMPLETE. MAKE ADJUSTMENTS AS REQUIRED. EC TO RELABEL ALL CIRCUIT DIRECTORIES FOR NEW CONFIGURATION AS REQUIRED AND PROVIDE AS-BUILTS TO CLIENT.
- EC SHALL ENSURE THAT ANY EXPOSED CONDUIT INSTALLED IN FINISHED SPACES FROM THE ELECTRICAL PANEL TO THE RESTROOM IS PAINTED WITH ONE COAT PRIMER AND TWO COATS OF PAINT TO MATCH THE EXISTING SURFACE FINISH. THERE SHALL BE NO EXPOSED CONDUIT WITHIN THE RESTROOM AREAS.
- KEYED NOTES MAY NOT APPEAR ON ALL PLAN VIEWS.
- SEE DRAWINGS E002-E004 FOR ELECTRICAL PANEL LOCATIONS.
- ALL NEW RECEPTACLE LOCATION MOUNTING HEIGHTS TO MATCH EXISTING IN SAME ROOM.

NEW WORK KEYED NOTES

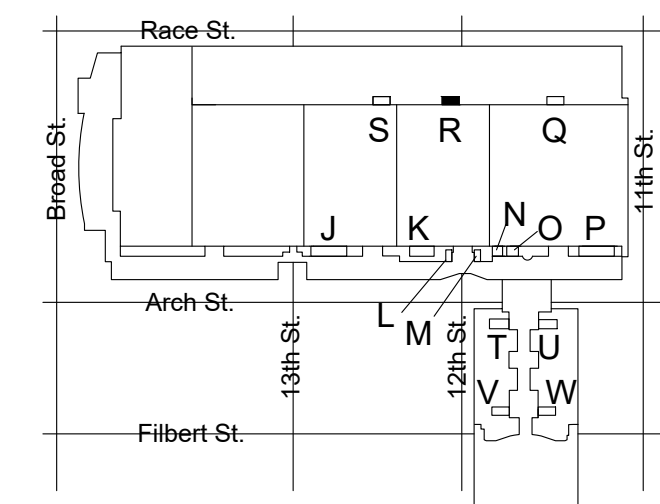
- E1** EC SHALL FURNISH AND INSTALL CONDUCTORS, RACEWAY, AND DOUBLE GANG BOX WITH (1) NEMA 5-20R DUPLEX RECEPTACLE TO POWER THE CORD AND PLUG CONNECTED ELECTRIC WATER COOLER HYDROBOOST SYSTEM AND (1) 20A MOTOR RATED TOGGLE SWITCH FOR HARDWARE CONNECTION TO THE COOLING UNIT. FURNISH AND INSTALL (2)#12 AWG CU & (1) #12 CU GND, MC CABLE AND PROVIDE POWER FROM THE MOTOR RATED TOGGLE SWITCH TO THE ELECTRIC WATER COOLER COOLING UNIT. MOUNT RECEPTACLE AND TOGGLE SWITCH WITHIN SPACE BEHIND ELECTRIC WATER COOLER ACCESS PANEL COVER. COORDINATE WORK WITH ELECTRIC WATER COOLER INSTALLER.
- E2** EC SHALL FURNISH AND INSTALL CONDUCTORS AND RACEWAY TO THE NEW AUTOMATIC PAPER TOWEL EQUIPMENT. PROVIDE ADDITIONAL WIRING AND SPLICES AS REQUIRED TO MAKE CONNECTIONS TO MULTIPLE AUTOMATIC PAPER TOWEL DEVICES. MINIMUM WIRE SIZE SHALL BE #12 AWG CU. COORDINATE WORK WITH PAPER TOWEL EQUIPMENT INSTALLER.
- E3** EC SHALL FURNISH AND INSTALL GFCI RECEPTACLES UNDERNEATH THE SINK COUNTERTOP TO SUPPLY POWER TO NEW AUTOMATIC FAUCET, LED SINK LIGHTING, AND SOAP DISPENSERS. PROVIDE POWER FROM THE NEW 120V CIRCUIT SHOWN AND EXTEND CIRCUIT TO FEED THE ADDITIONAL RECEPTACLES FOR EACH SINK. MINIMUM WIRE SIZE SHALL BE #12 AWG CU. COORDINATE WORK WITH INSTALLATION OF SINK EQUIPMENT.
- E4** EC SHALL FURNISH AND INSTALL RECEPTACLE AT THE LOCATION SHOWN. PROVIDE SPLICES AND NEW WIRING TO EXTEND CIRCUIT AS REQUIRED.
- E5** EC SHALL FURNISH AND INSTALL GFCI RECEPTACLES ON DEDICATED BRANCH CIRCUITS UNDERNEATH THE SINK COUNTERTOP TO SUPPLY POWER TO NEW HAND DRYERS. COORDINATE WORK WITH INSTALLATION OF SINK EQUIPMENT.
- E6** EC SHALL FURNISH AND INSTALL NEW 24V OCCUPANCY SENSOR WALL SWITCH AND 20A, 120/277V POWER PACK TO COORDINATE WITH CEILING MOUNTED LIGHTING CONTROLS. PROVIDE SPLICES AND NEW WIRING TO EXTEND CIRCUIT AS REQUIRED TO THE POWER PACK. REFER TO DETAIL 3/E701 FOR LOW VOLTAGE OCCUPANCY SENSOR WIRING DIAGRAM.
- E7** EC SHALL FURNISH AND INSTALL GFCI RECEPTACLE AND NEW WIRING AND MAKE CONNECTIONS TO EXISTING RECEPTACLE IN ADJACENT ROOM.
- E8** EC SHALL FURNISH AND INSTALL NEW WIRING AND CONDUIT TO EDGELIT MIRRORS. COORDINATE 120V POWER SUPPLY WITH 120V POWER PACK AND CEILING LIGHTING CONTROLS AS SHOWN IN DETAIL 4/E701.
- E9** NEW RECEPTACLE AT EXISTING LOCATION.



2 FLOOR PLAN - MEN'S & WOMEN'S ROOM R
 SCALE: 1/4" = 1'-0"



1 DEMO PLAN - MEN'S & WOMEN'S ROOM R
 SCALE: 1/4" = 1'-0"



KEY PLAN - LEVEL 200 NTS

