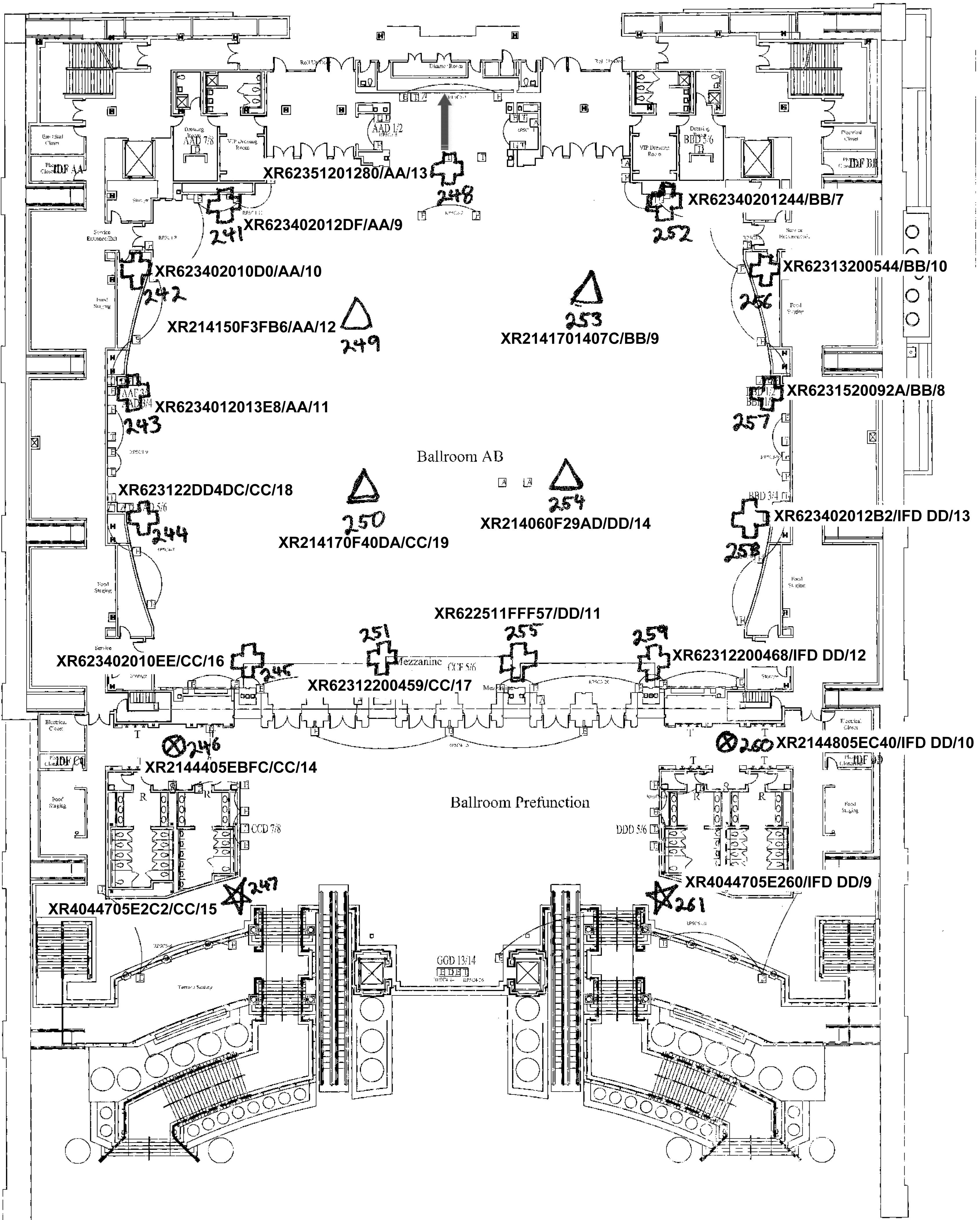
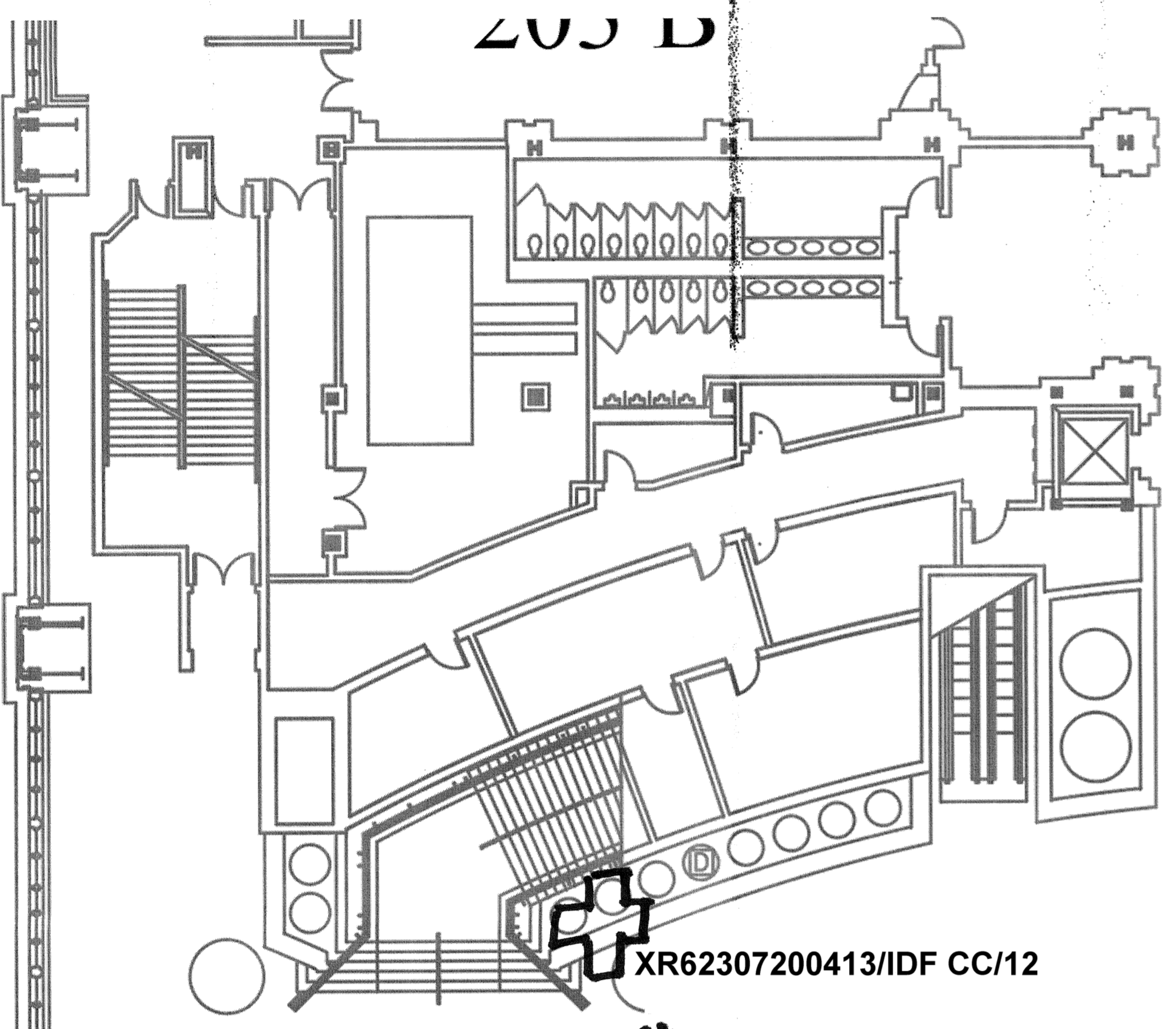


FLOOR PLAN BALLROOM LEVEL 89

SCALE: 1"=40'

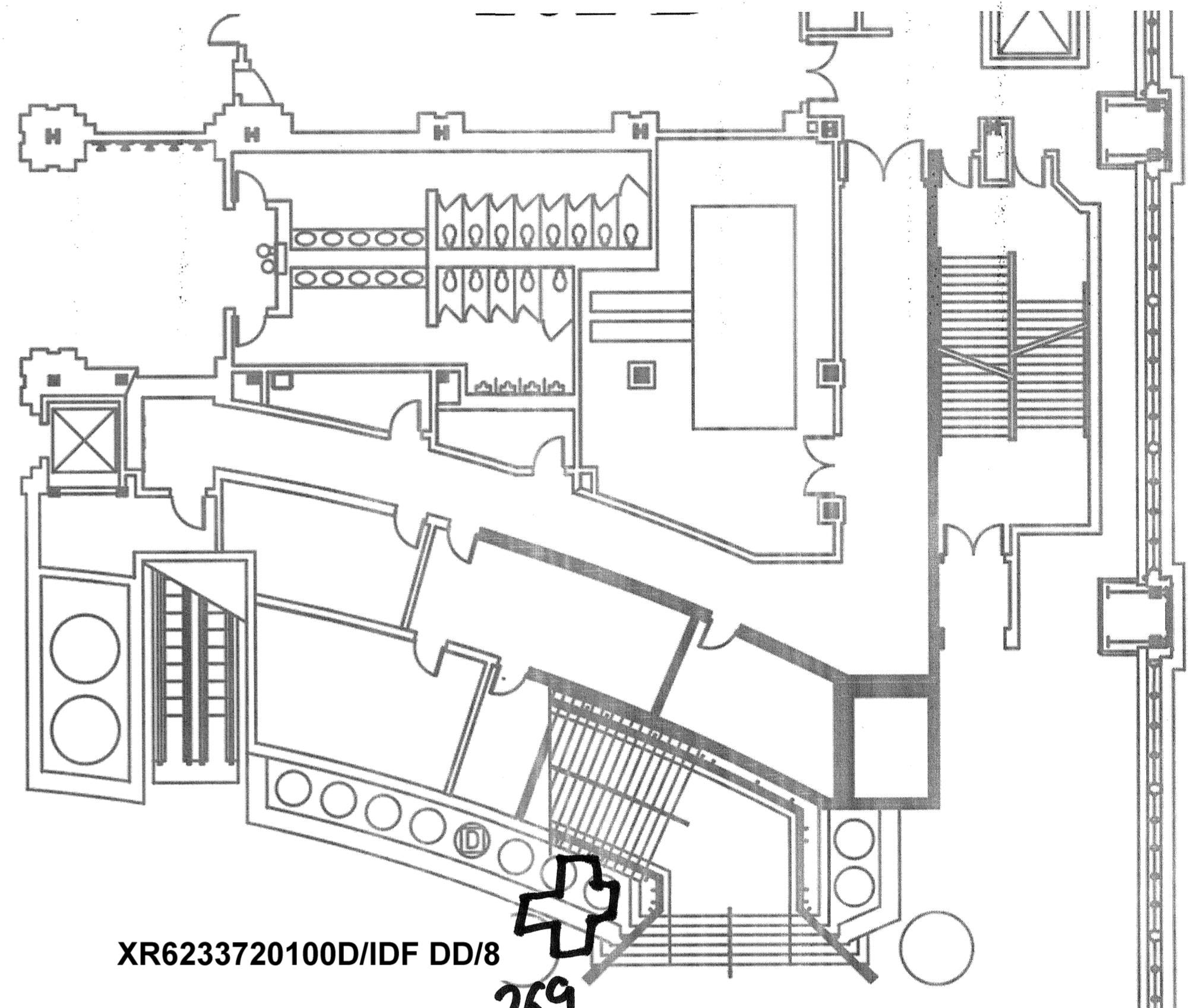


205 D



XR62307200413/IDF CC/12

264  
RDK



XR6233720100D/IDF DD/8

269  
RDK

262  
WM6

XR6234020128F/IFD CC/13

271  
WM6

XR62314200553/IDF DD/7

XR623402012DA/CATWALK/3

266  
ACM

XR623402012AB/CATWALK/2

268  
ACM

XR622431FECF0/CATWALK/7

263  
WM6

XR623402010E9/CATWALK/6

265  
WM6

XR62340201085/CATWALK/5

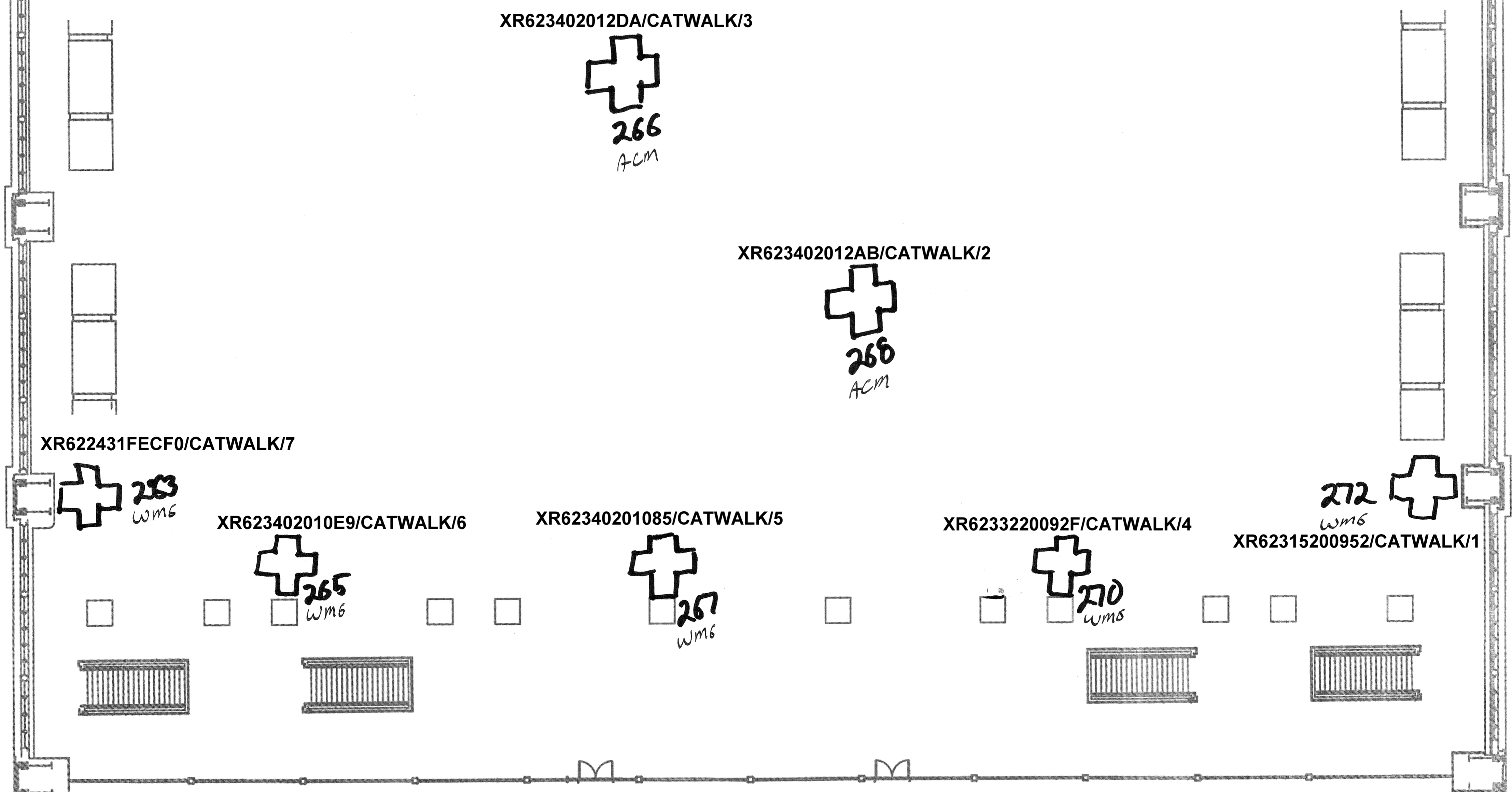
267  
WM6

XR6233220092F/CATWALK/4

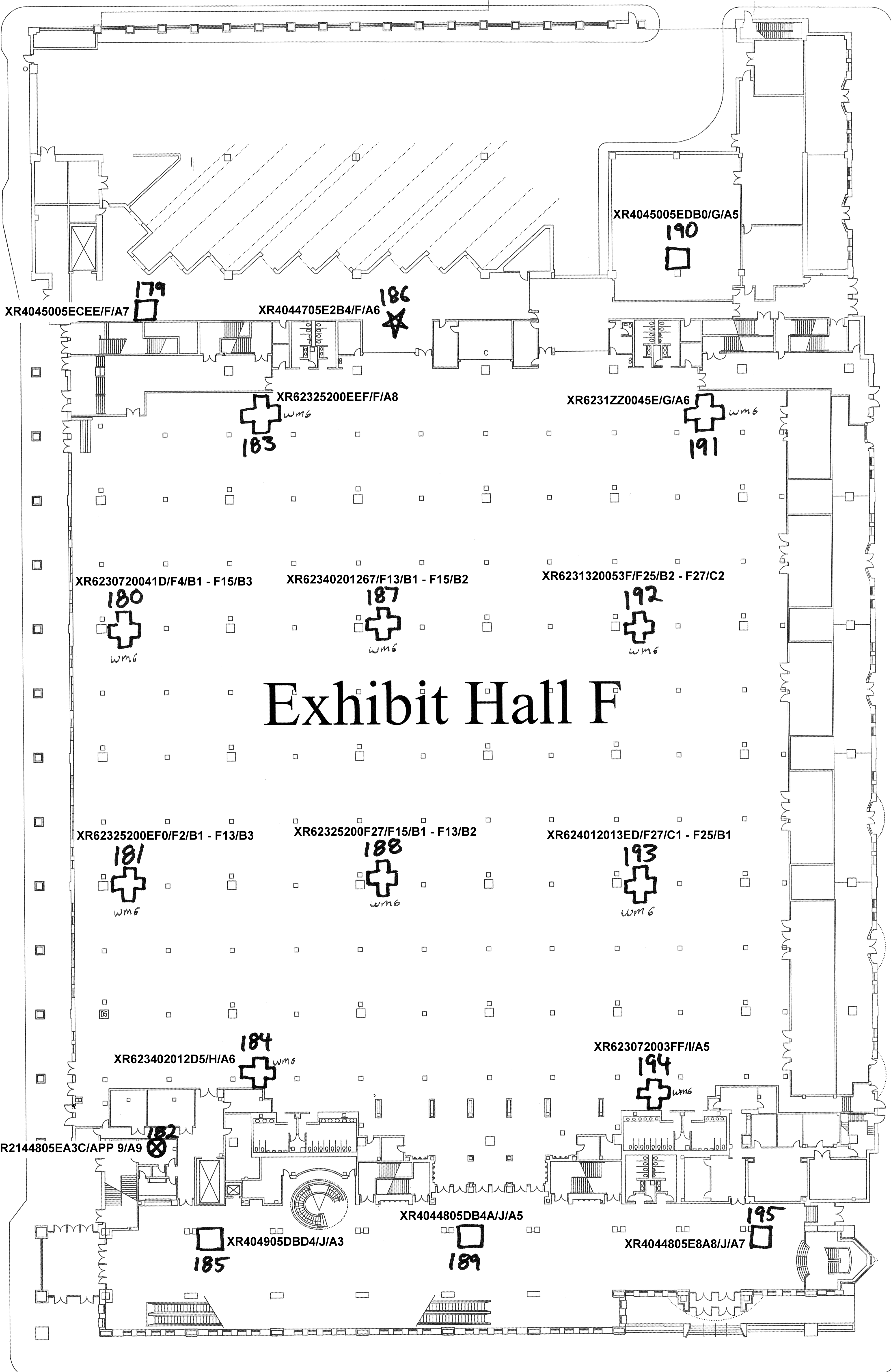
270  
WM6

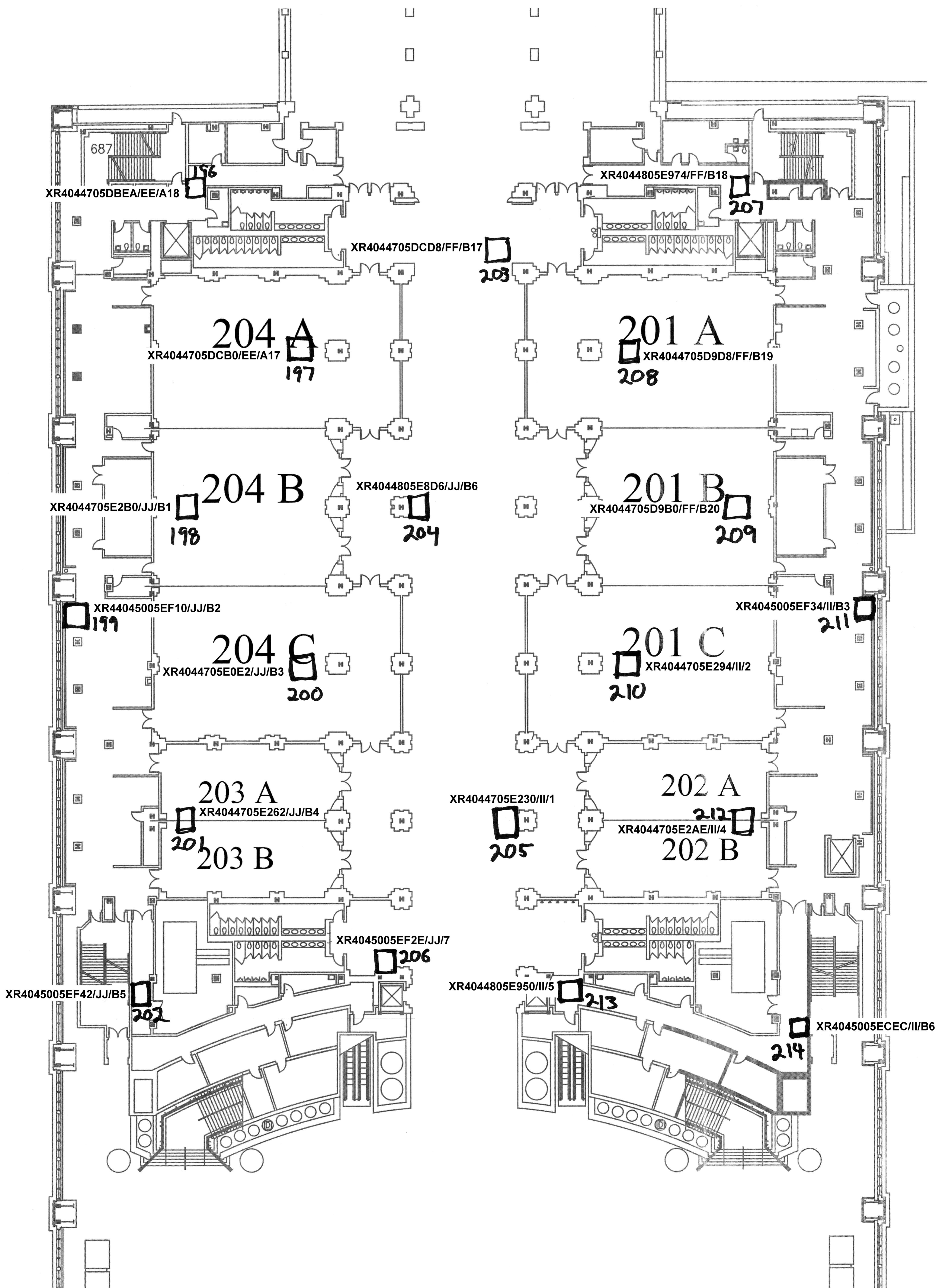
272  
WM6

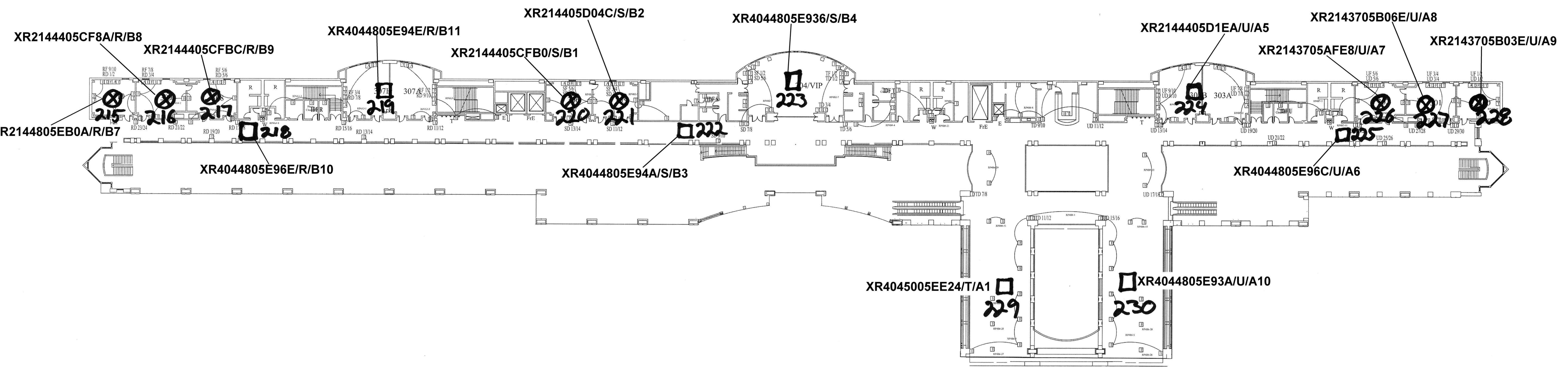
XR62315200952/CATWALK/1



12th Street







XR2144405CF8A/R/B8

XR2144405CFBC/R/B9

XR4044805E94E/R/B11

XR2144405D04C/S/B2

XR2144405CFB0/S/B1

XR4044805E936/S/B4

XR2144405D1EA/U/A5

XR2143705B06E/U/A8

XR2143705AFE8/U/A7

XR2143705B03E/U/A9

XR2144805EB0A/R/B7

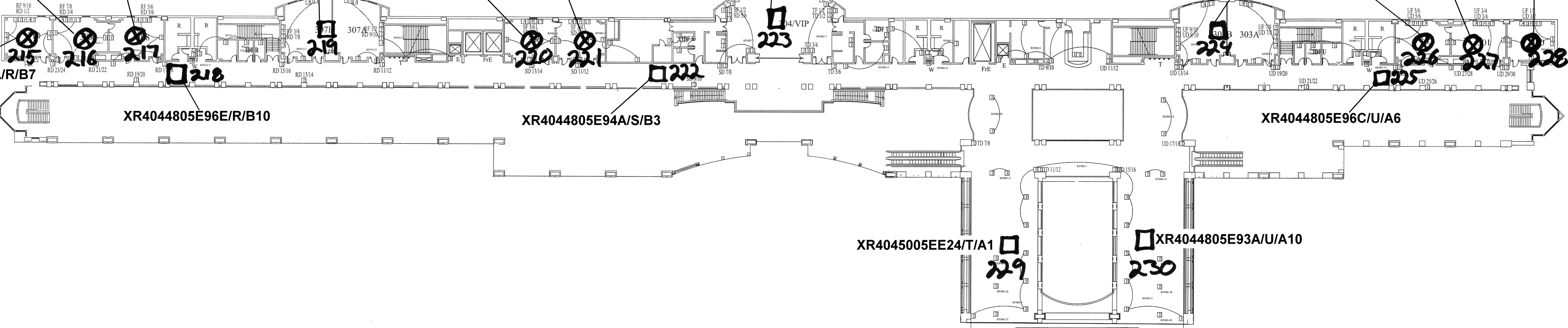
XR4044805E96E/R/B10

XR4044805E94A/S/B3

XR4044805E96C/U/A6

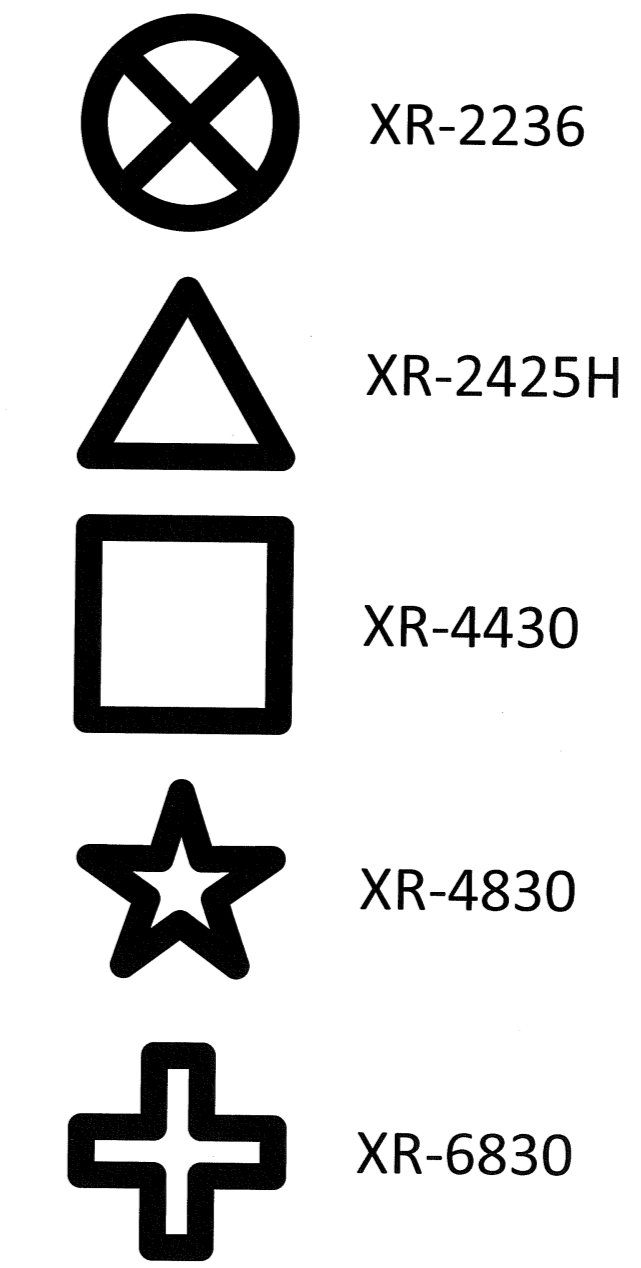
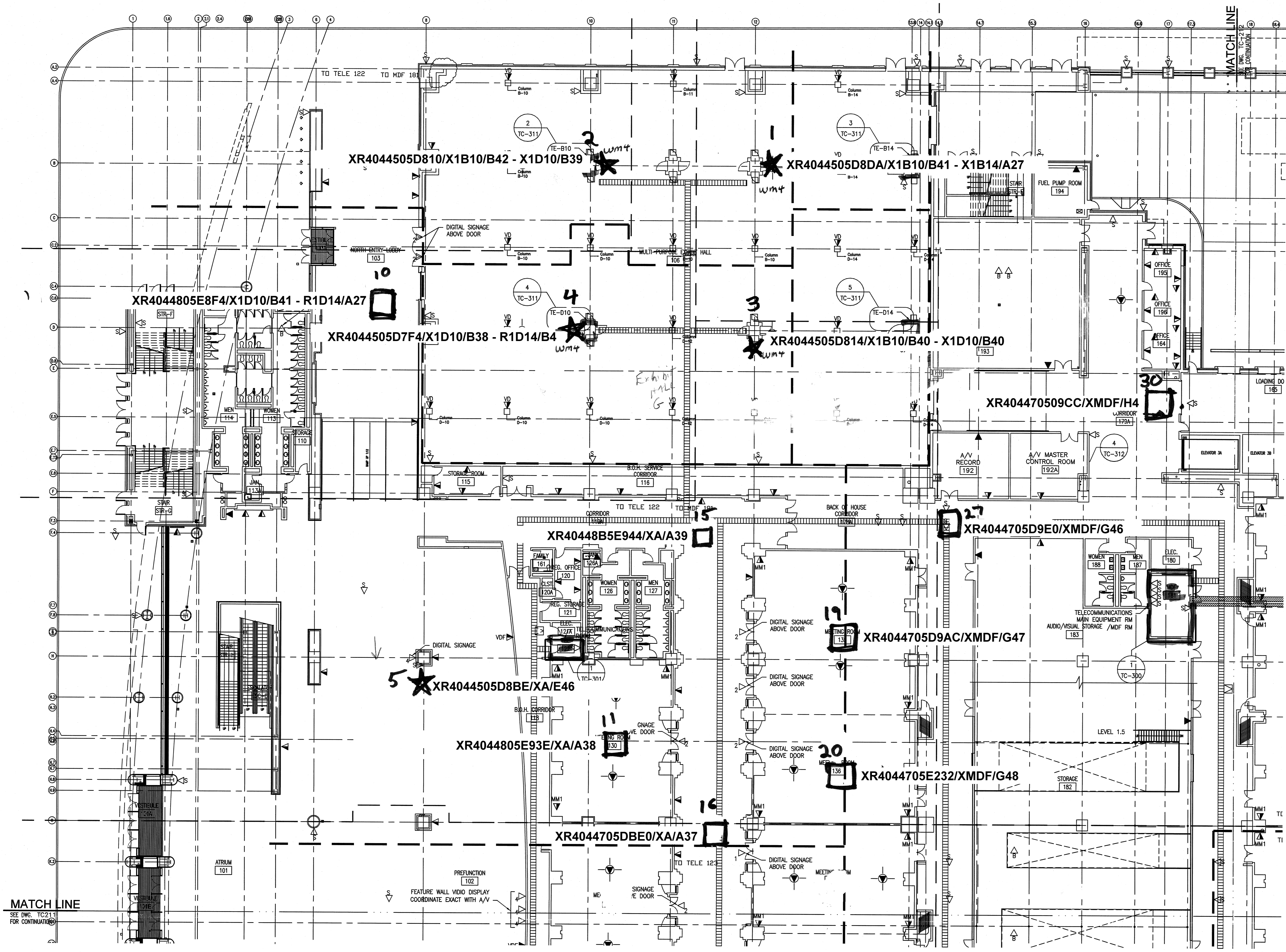
XR4045005EE24/T/A1

XR4044805E93A/U/A10









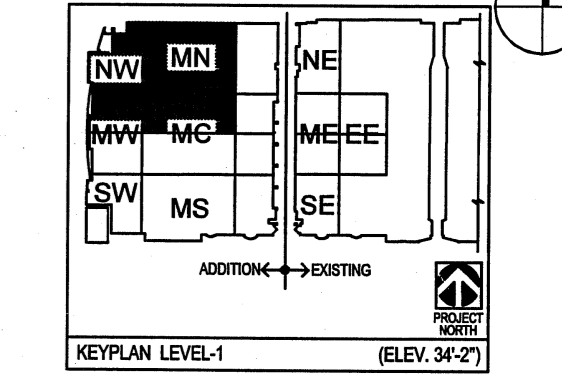
WM4 – Wall mount for 4000 series and smaller APs  
WM6 – Wall mount for 6000 series APs

Project Title:  
**PENNSYLVANIA CONVENTION CENTER AUTHORITY**  
1101 ARCH STREET  
PHILADELPHIA, PA 19107

**EXPANSION AND RENOVATION TO THE PENNSYLVANIA CONVENTION CENTER PHILADELPHIA, PA 19107**

Number	Description	Date
	CONTRACT 3 IFC INFO	01-15-10

Key Plan: Project North



Project No.: 87-5979-00  
Copyright: 2009 KlingStubbins, Inc or LLC  
Scale: AS NOTED  
Drawing Sheet Title:

**LEVEL-1  
TELECOMMUNICATIONS PLAN  
NW**

Drawing Sheet Number:  
**TC-210**  
Owner's Drawing Sheet No.:

1 FIRST FLOOR PLAN NORTHWEST  
SCALE: 1/16" = 1'-0"

**LEGEND:**

- ▼ - STANDARD OUTLET = 2V/2D
- ▼ - SOLID OUTLET = 1V
- ▼ - VDF OUTLET = 2V/2D/4F
- ▼ - VD OUTLET = 4V/6D
- ▼ - OPEN OUTLET = 1D FOR BMS IP DEVICE
- ▼ - OPEN OUTLET = 1D FOR SECURITY IP DEVICE
- ▼ - OPEN OUTLET = #D FOR DIGITAL SIGNAGE, REFERENCED ON AV DWGS. AS - DS
- ▼ - MM1 OUTLET = 12D/4F (MTC, RMS), REFERENCED ON AV DWGS. AS - MP
- ▼ - MM2 OUTLET = 4D/2F (BALL RM. FLOOR)
- ▼ - WAP OUTLET = 2D

**NOTES:**

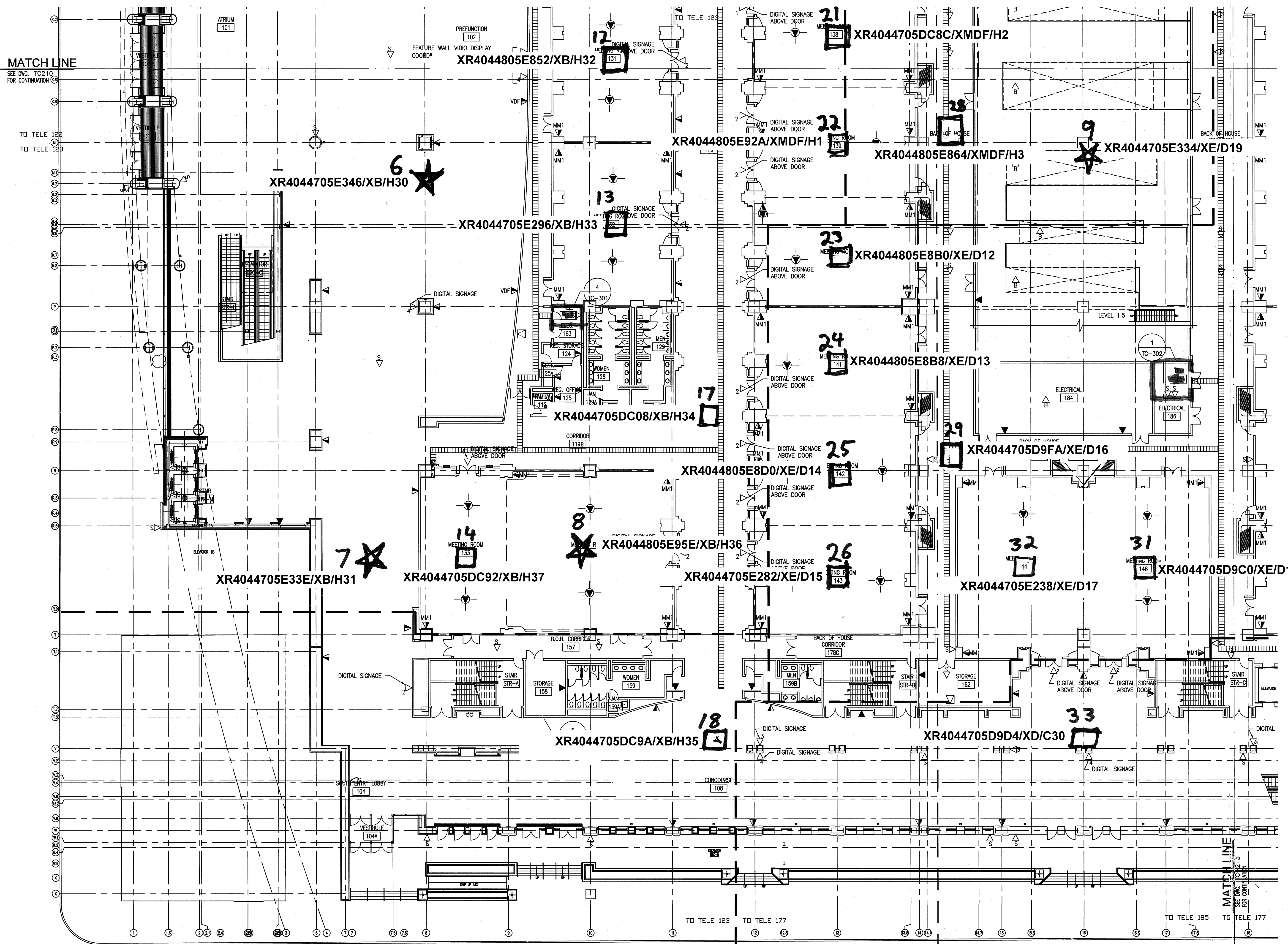
1. COORDINATE WITH SECURITY VENDOR FOR IP SECURITY DEVICE LOCATIONS.
2. COORDINATE WITH BMS VENDOR FOR FINAL BMS WAO LOCATION
3. ALL WORKSTATION LOCATIONS ARE APPROXIMATE, REFER TO ELY DRAWINGS FOR EXACT WORKSTATION LOCATIONS.

00000000

SFILES

SUSERNAMES

SCATETIMES



1 FIRST FLOOR PLAN SOUTHWEST  
SCALE: 1/16" = 1'-0"

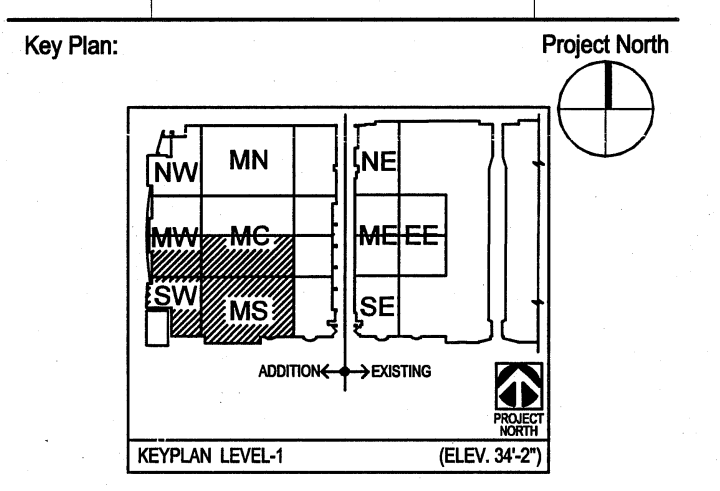
- LEGEND:**
- ▼ - STANDARD OUTLET = 2V/2D
  - ▼ - SOLID OUTLET = 1V
  - ▼ - VDF OUTLET = 2V/2D/4F
  - ▼ - VD OUTLET = 4V/6D
  - ▼ - OPEN OUTLET = 1D FOR BMS IP DEVICE
  - ▼ - OPEN OUTLET = 1D FOR SECURITY IP DEVICE
  - ▼ - OPEN OUTLET = #D FOR DIGITAL SIGNAGE, REFERENCED ON AV DWGS. AS - DS
  - MM1 - MM1 OUTLET = 12D/4F (MTG. RMS.), REFERENCED ON AV DWGS. AS - MP
  - MM2 - MM2 OUTLET = 4D/2F (BALL RM. FLOOR)
  - ▼ - WAP OUTLET = 2D

- NOTES:**
1. COORDINATE WITH SECURITY VENDOR FOR IP SECURITY DEVICE LOCATIONS.
  2. COORDINATE WITH BMS VENDOR FOR FINAL BMS WAO LOCATION
  3. ALL WORKSTATION LOCATIONS ARE APPROXIMATE, REFER TO ELY DRAWINGS FOR EXACT WORKSTATION LOCATIONS.

Project Title:  
**PENNSYLVANIA CONVENTION CENTER AUTHORITY**  
ONE PENNSYLVANIA CONVENTION CENTER PLACE  
1101 ARCH STREET  
PHILADELPHIA, PA 19107

**EXPANSION AND RENOVATION TO THE PENNSYLVANIA CONVENTION CENTER PHILADELPHIA, PA 19107**

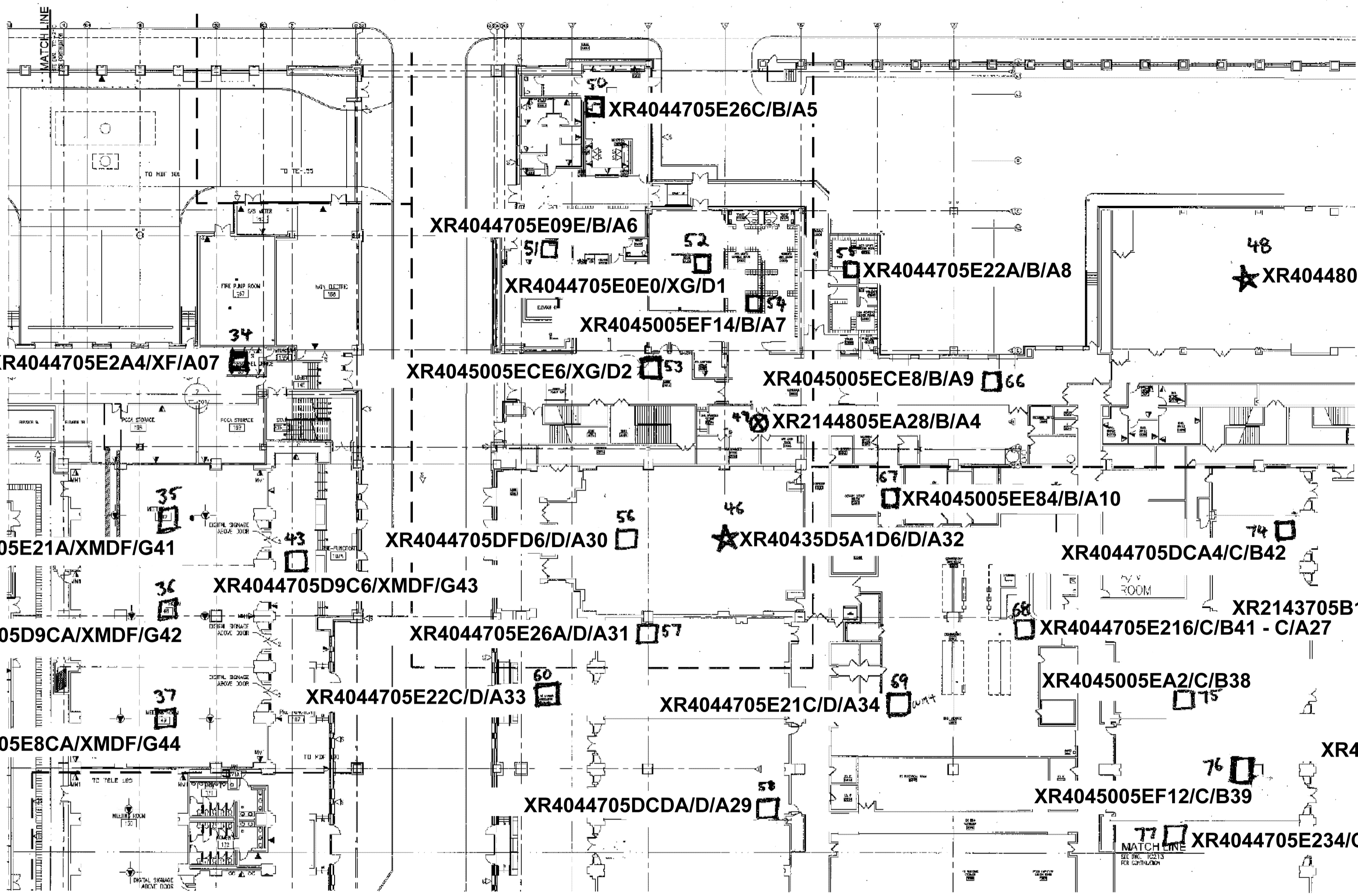
Number	Description	Date
	CONTRACT 3 IFC INFO	01-15-10



Project No.: 87-5879-00  
Copyright: 2009 KlingStubbins, Inc or LLC  
Scale: AS-NOTED  
Drawing Sheet Title:

**LEVEL-1  
TELCOMMUNICATIONS PLAN  
SW**

Drawing Sheet Number:  
**TC-211**  
Owner's Drawing Sheet No.:



XR4044705E244/XF/A07

XR4044705E09E/B/A6

XR4044705E0E0/XG/D1

XR4045005EF14/B/A7

XR4044705E22A/B/A8

XR4044805E7F8/A/A6

XR4045005ECE6/XG/D2

XR4045005ECE8/B/A9

XR2144805EA28/B/A4

XR4045005EE84/B/A10

XR4044705E21A/XMDF/G41

XR4044705DFD6/D/A30

XR40435D5A1D6/D/A32

XR4044705DCA4/C/B42

XR2143705B042/IDF C/B47

XR4044705D9C6/XMDF/G43

XR4044705E26A/D/A31

XR4044705E216/C/B41 - C/A27

XR2143705B13E/IDF C/B46

XR4044705D9CA/XMDF/G42

XR4044705E22C/D/A33

XR4044705E21C/D/A34

XR4045005EA2/C/B38

XR4044705DC0C/IDF C/B45

XR4044805E8CA/XMDF/G44

XR4044705DCDA/D/A29

XR4045005EF12/C/B39

282

XR4044705E234/C/B40

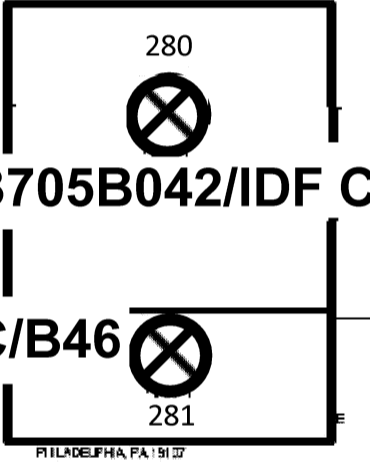
FIRST FLOOR PLAN NORTHEAST  
SCALE: 1/16" = 1'-0"

**LEGEND:**

- ▽ SHARED OUTLET - 20/20
- ▽ SOLID OUTLET - 1V
- ▽ VDF OUTLET - 20/20/4F
- ▽ MD OUTLET - 40/30
- ▽ OPEN OUTLET - 10 FOR EMS IP DEVICE
- ▽ OPEN OUTLET - 10 FOR SECURITY IP DEVICE
- ▽ OPEN OUTLET - 30 FOR DIGITAL STORAGE, REFERENCED ON WJ DWGS AS - 03
- ▽ MNT OUTLET - 120/4F (MFG. BMS), REFERENCED ON WJ DWGS AS - 04
- ▽ MNT OUTLET - 40/2F (EAL. RV. F.205)
- ▽ WPP OUTLET - 23

**NOTES:**

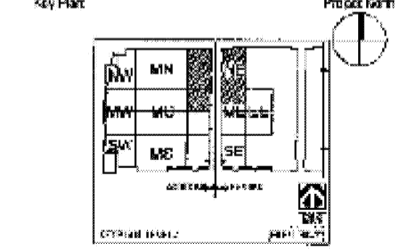
1. COORDINATE WITH SECURITY VENDOR FOR IP SECURITY DEVICE LOCATIONS.
2. COORDINATE WITH EMS VENDOR FOR FINAL BMS WMO LOCATION.
3. ALL WORKSTATION LOCATIONS ARE APPROXIMATE. REFER TO ELY DRAWINGS FOR EXACT WORKSTATION LOCATIONS.



TO THE PENNSYLVANIA  
CONVENTION CENTER  
PHILADELPHIA, PA 19107

Number	Description	Date

Key Mark	Process Mark

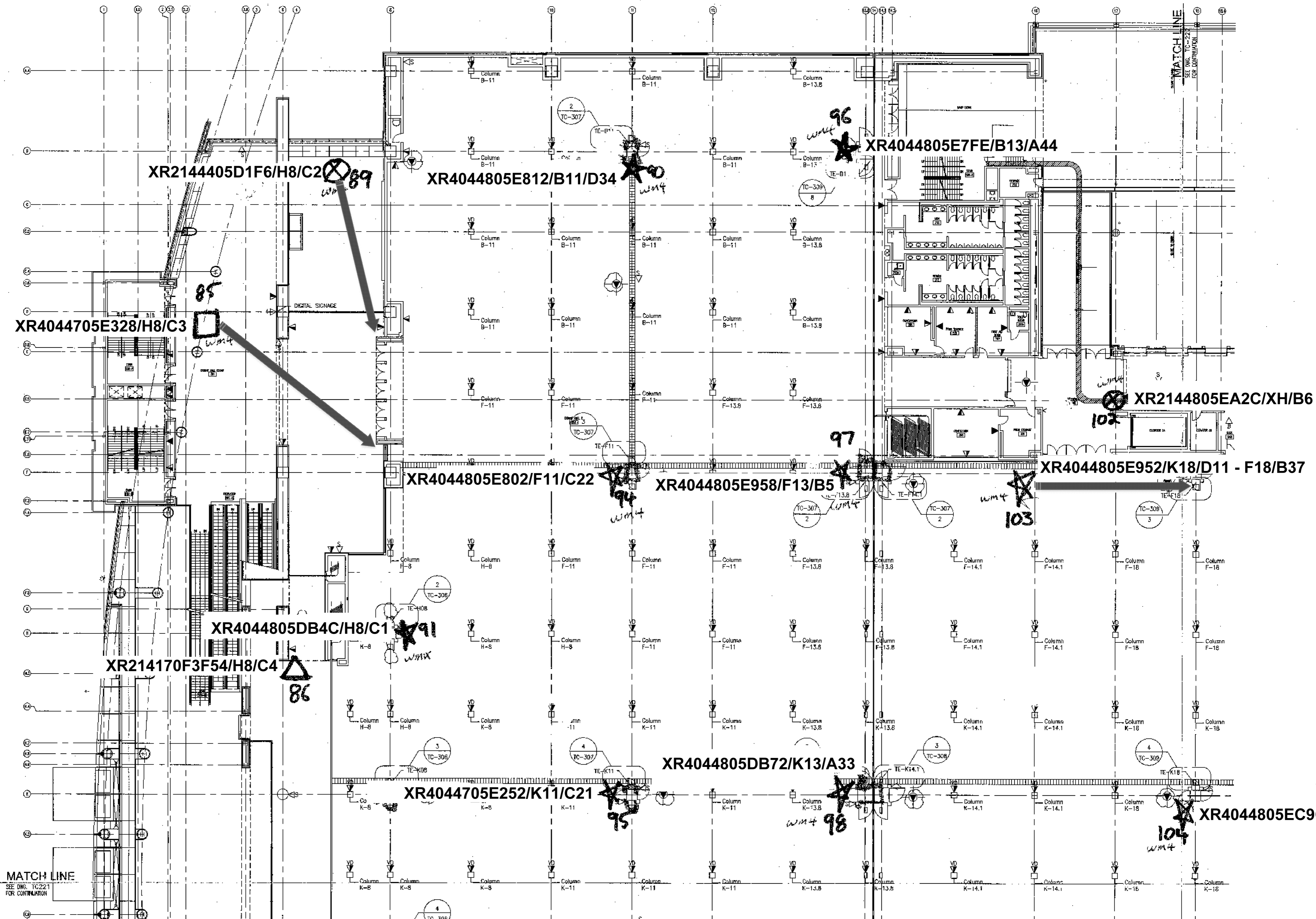


Project No. 07-0075-06  
Copyright © 2009 KlingStubbins, Inc. or LLC  
Scale: AS SHOWN  
Drawing Sheet Title:

**LEVEL-1  
TELECOMMUNICATIONS PLAN  
NE**

Drawing Sheet Number:  
**TC-212**  
Overall Drawing Sheet No.:





1 SECOND FLOOR PLAN NORTHWEST  
SCALE: 1/16" = 1'-0"

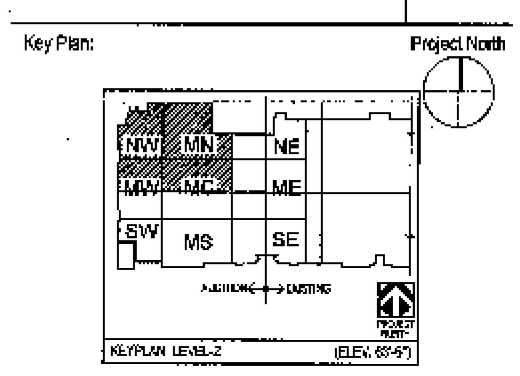
- LEGEND:**
- ▼ STANDARD OUTLET = 2V/2D
  - ▼ SOLID OUTLET = 1V
  - ▼ VDF OUTLET = 2V/2B/4F
  - ▼ VDF OUTLET = 4V/6D
  - ▼ OPEN OUTLET = 1D FOR BMS IP DEVICE
  - ▼ OPEN OUTLET = 1D FOR SECURITY IP DEVICE
  - ▼ OPEN OUTLET = 1D FOR DIGITAL SIGNAGE, REFERENCED ON AV DWGS. AS - [DS]
  - ▼ MM1 OUTLET = 12D/4F (MTG. RMS), REFERENCED ON AV DWGS. AS - [MP]
  - ▼ MM2 OUTLET = 4D/2F (BALL RM. FLOOR)
  - ▼ WAP OUTLET = 2D

- NOTES:**
1. COORDINATE WITH SECURITY VENDOR FOR IP SECURITY DEVICE LOCATIONS.
  2. COORDINATE WITH BMS VENDOR FOR FINAL BMS WAO LOCATION
  3. ALL WORKSTATION LOCATIONS ARE APPROXIMATE, REFER TO ELY DRAWINGS FOR EXACT WORKSTATION LOCATIONS.

Project Title:  
**PENNSYLVANIA CONVENTION  
CENTER AUTHORITY**  
ONE PENNSYLVANIA CONVENTION CENTER PLACE  
15th ARCH STREET  
PHILADELPHIA, PA 19107

Number	Description	Date
1	CONTRACT 3 IFC WFO	01-16-19

EXPANSION AND RENOVATION TO THE PENNSYLVANIA CONVENTION CENTER PHILADELPHIA, PA 19107



Project No.: 87-5879-40  
Copyright: © 2019 KlingStubbins, Inc. or LLC  
Scale: AS NOTED  
Drawing Sheet Title:

**LEVEL-2  
TELECOMMUNICATIONS PLAN  
NW**

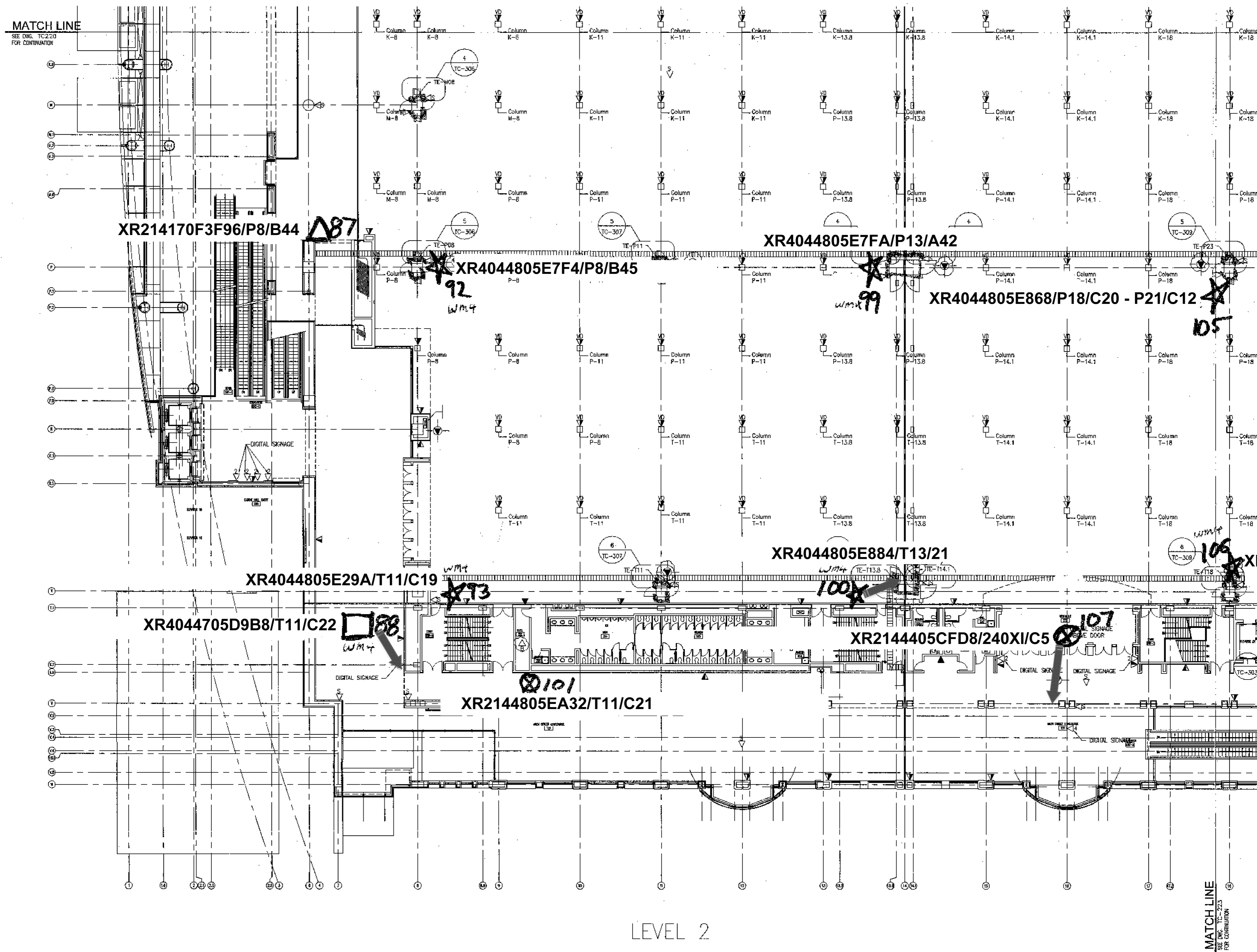
Drawing Sheet Number:  
**TC-220**  
Owner's Drawing Sheet No.:

080606

FILES

SUBMITTALS

DATE/TIME



LEVEL 2

1 SECOND FLOOR PLAN SOUTHWEST  
SCALE: 1/16" = 1'-0"

**LEGEND:**

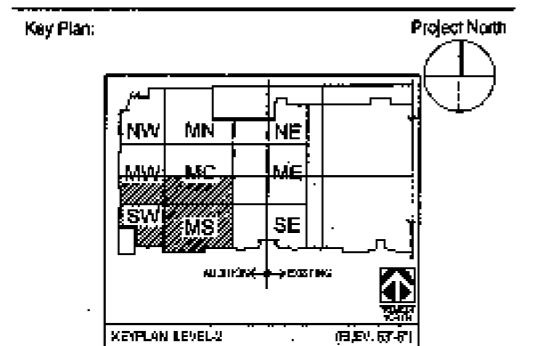
- ▼ STANDARD OUTLET = 20/20
- ▼ SOLID OUTLET = 1V
- ▼ VDF OUTLET = 20/20/4F
- ▼ VO OUTLET = 44/60
- ▼ OPEN OUTLET = 1D FOR BMS IP DEVICE
- ▼ OPEN OUTLET = 1D FOR SECURITY IP DEVICE
- ▼ OPEN OUTLET = 1D FOR DIGITAL SIGNAGE, REFERENCED ON AV DWGS. AS - [DS]
- ▼ MM1 OUTLET = 120/4F (MTC. RMS), REFERENCED ON AV DWGS. AS - [MP]
- ▼ MM2 OUTLET = 40/2F (BALL RM. FLOOR)
- ▼ WAP OUTLET = 2D

**NOTES:**

1. COORDINATE WITH SECURITY VENDOR FOR IP SECURITY DEVICE LOCATIONS.
2. COORDINATE WITH BMS VENDOR FOR FINAL BMS WAP LOCATION.
3. ALL WORKSTATION LOCATIONS ARE APPROXIMATE. REFER TO ELEVATION DRAWINGS FOR EXACT WORKSTATION LOCATIONS.

Project Title:  
PENNSYLVANIA CONVENTION  
CENTER AUTHORITY  
ONE PENNSYLVANIA CONVENTION CENTER PLACE  
1101 ARCH STREET  
PHILADELPHIA, PA 19107  
  
EXPANSION AND  
RENOVATION  
TO THE PENNSYLVANIA  
CONVENTION CENTER  
PHILADELPHIA, PA 19107

Number	Description	Date
	CONTRACT 3 IFC INFO	01-15-10



Project No.: 07-5979-00  
Copyright: 2009 KlingStubbins, Inc or LLC  
Scale: AS NOTED

Drawing Sheet Title:

LEVEL 2  
TELECOMMUNICATIONS PLAN  
SW

Drawing Sheet Number:

TC-221

Owner's Drawing Sheet No.:

686098

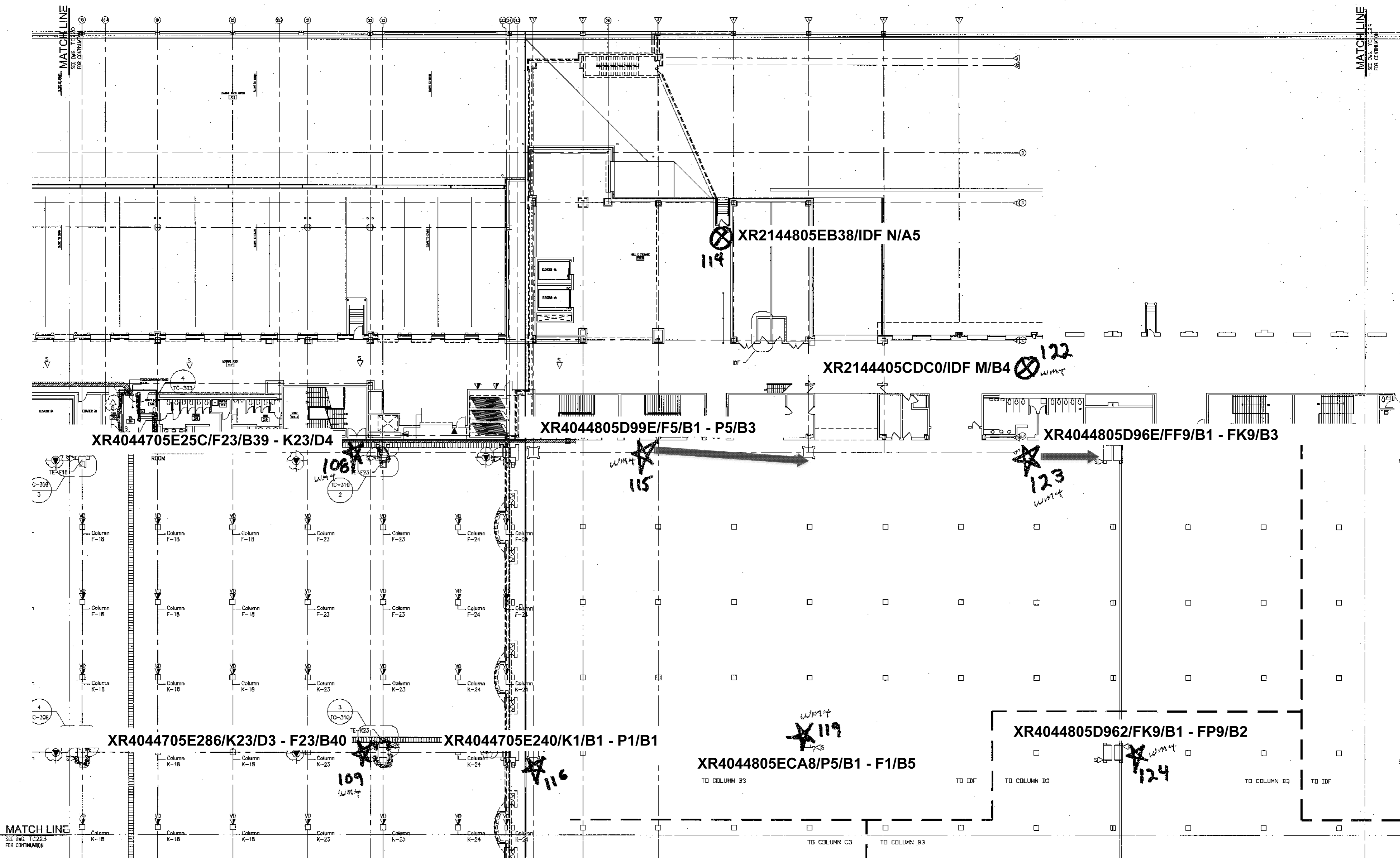
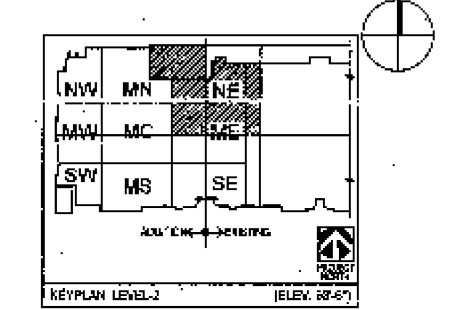
\$FILE\$

SUBRIMAGES

SAYTIMES

Number	Description	Date
1	CONTRACT 3 IFC INFO	01-15-10

Key Plan: Project North



1 SECOND FLOOR PLAN NORTHEAST  
SCALE: 1/16" = 1'-0"

- LEGEND:**
- ▽ - STANDARD OUTLET = 21/20
  - ▼ - SOLID OUTLET = 1V
  - ▽▽ - VDF OUTLET = 21/20/4F
  - ▽▽ - VD OUTLET = 4V/60
  - - OPEN OUTLET = 1D FOR BMS IP DEVICE
  - - OPEN OUTLET = 1D FOR SECURITY IP DEVICE
  - - OPEN OUTLET = 1D FOR DIGITAL SIGNAGE, REFERENCED ON AV DWGS. AS - [DS]
  - MM1 - MM1 OUTLET = 120/4F (MTG. RMS.), REFERENCED ON AV DWGS. AS - [MP]
  - MM2 - MM2 OUTLET = 4D/2F (BALL RM. FLOOR)
  - - WAP OUTLET = 2D

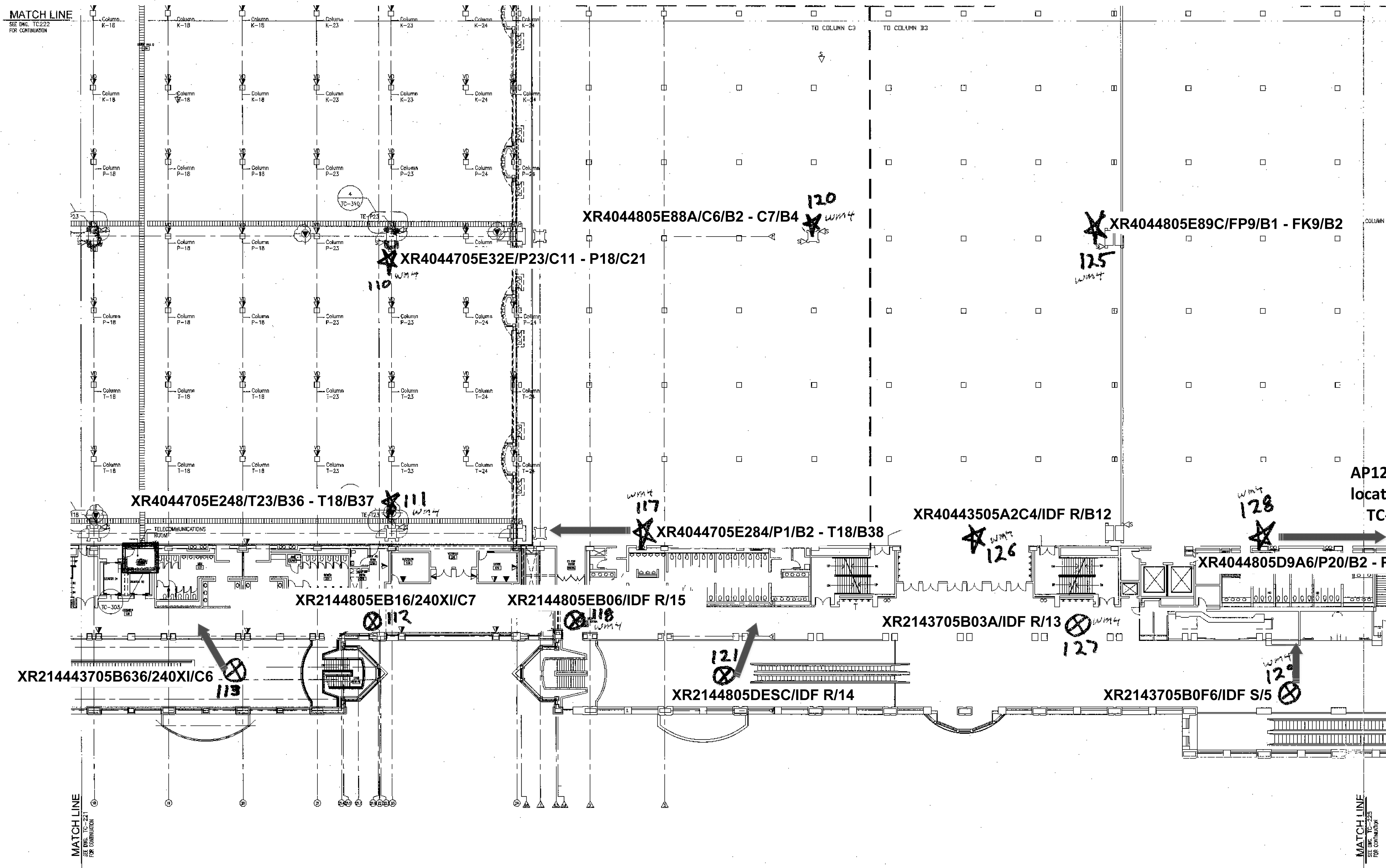
- NOTES:**
1. COORDINATE WITH SECURITY VENDOR FOR IP SECURITY DEVICE LOCATIONS.
  2. COORDINATE WITH BMS VENDOR FOR FINAL BSM WHO LOCATION.
  3. ALL WORKSTATION LOCATIONS ARE APPROXIMATE, REFER TO ELV DRAWINGS FOR EXACT WORKSTATION LOCATIONS.

SUSPENSE

FILES

SUBMITTALS

SCHEMATIC



1 SECOND FLOOR PLAN SOUTHEAST  
SCALE: 1/16" = 1'-0"

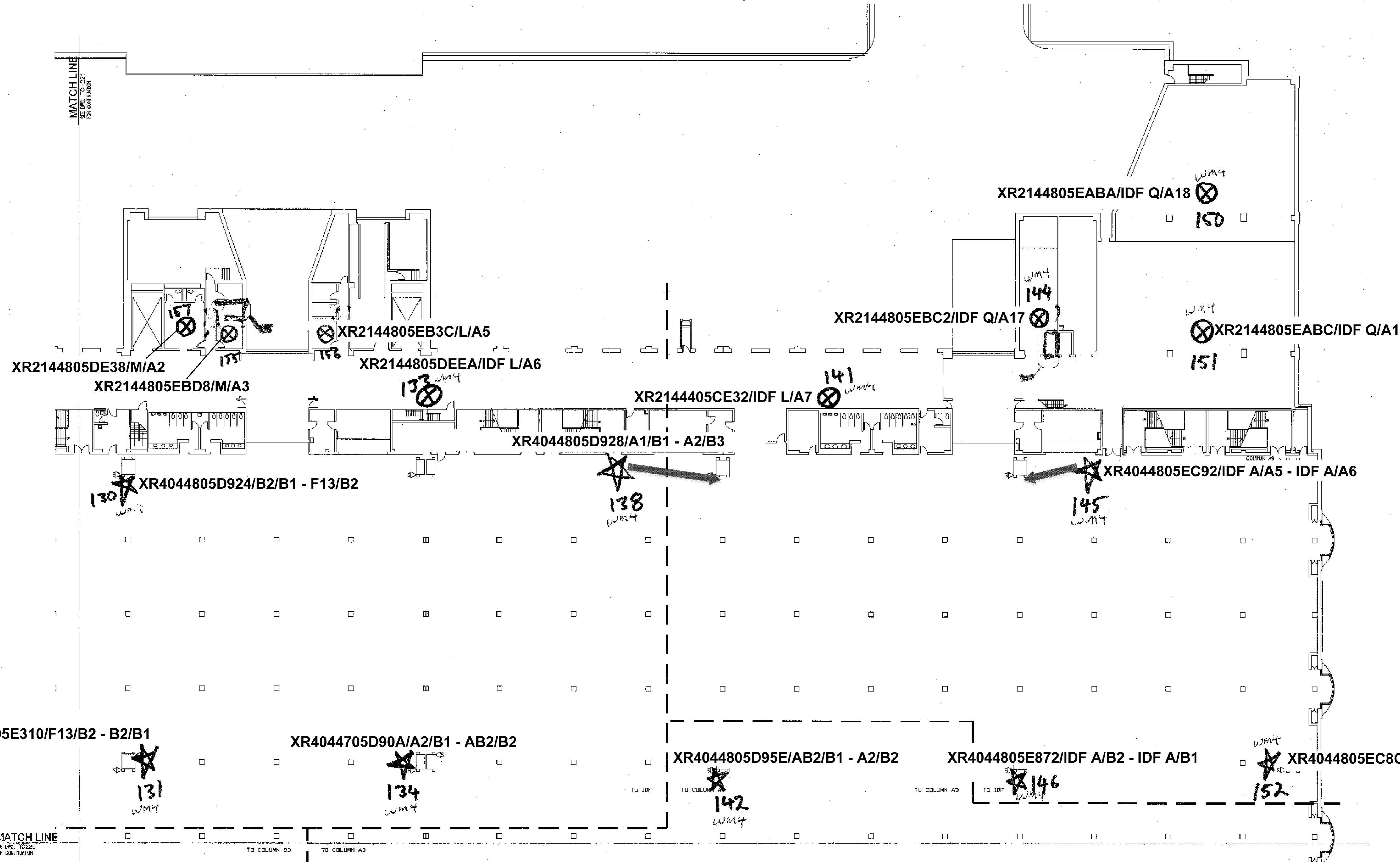
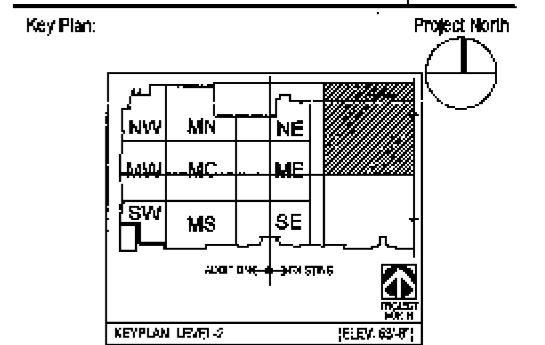
- LEGEND:**
- ▼ - STANDARD OUTLET = 24/20
  - ▼ - SOLID OUTLET = 1V
  - ▼ - VDF OUTLET = 24/20/4F
  - ▼ - VO OUTLET = 48/60
  - ⊕ - OPEN OUTLET = 10 FOR RMS IP DEVICE
  - ⊕ - OPEN OUTLET = 10 FOR SECURITY IP DEVICE
  - ⊕ - OPEN OUTLET = 10 FOR DIGITAL SIGNAGE, REFERENCED ON AV DWGS. AS - [05]
  - W/M 1 - MINI OUTLET = 120/4F (MTG. RMS), REFERENCED ON AV DWGS. AS - [MF]
  - W/M 2 - MAIZ OUTLET = 40/2F (BALL RM. FLOOR)
  - ⊕ - WAP OUTLET = 20

- NOTES:**
1. COORDINATE WITH SECURITY VENDOR FOR IP SECURITY DEVICE LOCATIONS.
  2. COORDINATE WITH RMS VENDOR FOR FINAL RMS WAP LOCATION.
  3. ALL WORKSTATION LOCATIONS ARE APPROXIMATE, REFER TO ELY DRAWINGS FOR EXACT WORKSTATION LOCATIONS.

000000  
 FILES  
 SUBPAGES  
 DATETIMES



Number	Description	Date
1	CONTRACT 3 IFC INFO	01-15-10



**1 SECOND FLOOR PLAN NORTHEAST - EXISTING BUILDING**  
SCALE: 1/16" = 1'-0"

**LEGEND:**

- ▼ - STANDARD OUTLET = 24/20
- ▼ - SOLID OUTLET = 1V
- ▼ - VDF OUTLET = 24/20/4F
- ▼ - VD OUTLET = 4V/6D
- ▼ - OPEN OUTLET = 1D FOR BMS IP DEVICE
- ▼ - OPEN OUTLET = 1D FOR SECURITY IP DEVICE
- ▼ - OPEN OUTLET = 1D FOR DIGITAL SIGNAGE, REFERENCED ON AV DWGS. AS [DS]
- ▼ - MM1 OUTLET = 12D/4F (MTG. RMS.), REFERENCED ON AV DWGS. AS [MP]
- ▼ - MM2 OUTLET = 40/2F (BALL RM. FLOOR)
- ▼ - WAP OUTLET = 2D

**NOTES:**

1. COORDINATE WITH SECURITY VENDOR FOR IP SECURITY DEVICE LOCATIONS.
2. COORDINATE WITH BMS VENDOR FOR FINAL BSM WAO LOCATION
3. ALL WORKSTATION LOCATIONS ARE APPROXIMATE, REFER TO ELY DRAWINGS FOR EXACT WORKSTATION LOCATIONS.

660033

FILES

SUBRANGES

SPARETIMES

MATCH LINE  
SEE DWG. TC224  
FOR CONTINUATION

**KLING STUBBINS**

2301 Chestnut Street  
Philadelphia, Pennsylvania

P 215-698-2900  
F 215-569-5993  
W www.klingstubbins.com

Consultants:  
**Acentech** Acentech  
8 Maple Drive  
Towson, PA 12053  
215-943-8244

**BURRIS** ENGINEERS  
Burris Engineers  
180 S. Main St.  
Suite 203  
Ardmore, PA 19002  
215-943-4465

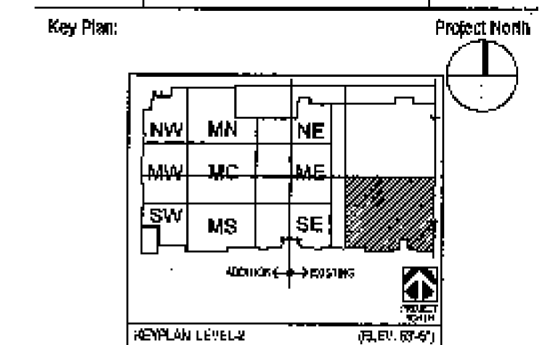
Scale:

General Notes:

Project Title:  
PENNSYLVANIA CONVENTION  
CENTER AUTHORITY  
ONE PENNSYLVANIA CONVENTION CENTER PLACE  
1101 ARCH STREET  
PHILADELPHIA, PA 19107

EXPANSION AND  
RENOVATION  
TO THE PENNSYLVANIA  
CONVENTION CENTER  
PHILADELPHIA, PA 19107

Number Description Date  
CONTRACT 3 IFC INFO 01-15-10



Project No.: 07-5679-00  
Copyright: 2009 KlingStubbins, Inc or LLC  
Scale: AS NOTED  
Drawing Sheet Title:

LEVEL-2  
TELECOMMUNICATIONS PLAN  
SE EXISTING EXHIBIT HALL

Drawing Sheet Number:

**TC-225**

Owner's Drawing Sheet No.:

XR4044805E200/B3/B10 - P20/B21

XR4044805D918/AB3/B2 - A3/B13

XR4044805ECA0/A3/B14 - AB3/B10

XR4044805E878/IDF A/B2

XR4044805D9A6/P20/B2 - P3/B9  
API28 new  
location from TC-  
223

XR4043505A2CA/A4/B1 - AB4/B2

XR4044805E8AE/A12/B1 - A8/B3

XR4044805DB50/AB4/B2 - A4/B1

XR4043505A2EE/IDF A/B1

XR2144805EB92/IDF U/B11

XR2144805EC2A/IDF U/B12

XR2144805EBFE/IDF D/3

XR2144805EBFA/IDF EE/19

1 SECOND FLOOR PLAN SOUTHEAST - EXISTING BUILDING

SCALE: 1/16" = 1'-0"

**LEGEND:**

- ▼ - STANDARD OUTLET = 2V/2D
- ▼ - SOLID OUTLET = 1V
- ▼ - VDF OUTLET = 2V/2D/4F
- ▼ - VD OUTLET = 4V/6D
- - OPEN OUTLET = 1D FOR BMS IP DEVICE
- - OPEN OUTLET = 1D FOR SECURITY IP DEVICE
- - OPEN OUTLET = 3D FOR DIGITAL SIGNAGE, REFERENCED ON ANY DWGS. AS - [DS]
- - MM1 OUTLET = 12D/4F (MTO, RIMS), REFERENCED ON ANY DWGS. AS - [MP]
- - MM2 OUTLET = 4D/2F (BALL RM. FLOOR)
- - WAP OUTLET = 2D

**NOTES:**

1. COORDINATE WITH SECURITY VENDOR FOR IP SECURITY DEVICE LOCATIONS.
2. COORDINATE WITH BMS VENDOR FOR FINAL BSM WAP LOCATION
3. ALL WORKSTATION LOCATIONS ARE APPROXIMATE, REFER TO ELY DRAWINGS FOR EXACT WORKSTATION LOCATIONS.

08/08/09

FILES

SUBSHEET

DATE/TIME

Consultants:

**Acentech**  
3 Interplex Drive  
Trevose, PA 19053  
215-245-8244

**BURRIS ENGINEERS**

Burris Engineers  
180 S. Main St.  
Suite 203  
Ambler, PA 19002  
215-643-4465

Seals:

General Notes:

Project Title:

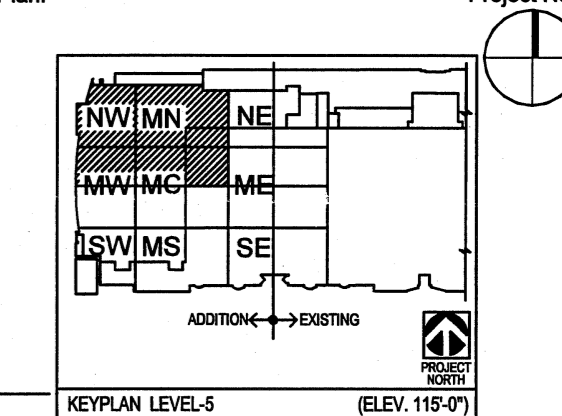
PENNSYLVANIA CONVENTION  
CENTER AUTHORITY

ONE PENNSYLVANIA CONVENTION CENTER PLACE  
1101 ARCH STREET  
PHILADELPHIA, PA 19107

EXPANSION AND  
RENOVATION  
TO THE PENNSYLVANIA  
CONVENTION CENTER  
PHILADELPHIA, PA 19107

Number	Description	Date
1	CONTRACT 3 IFC INFO	01-15-10

Key Plan:



Project No.: 87-5979-00

Copyright: 2009 KlingStubbins, Inc or LLC

Scale: AS NOTED

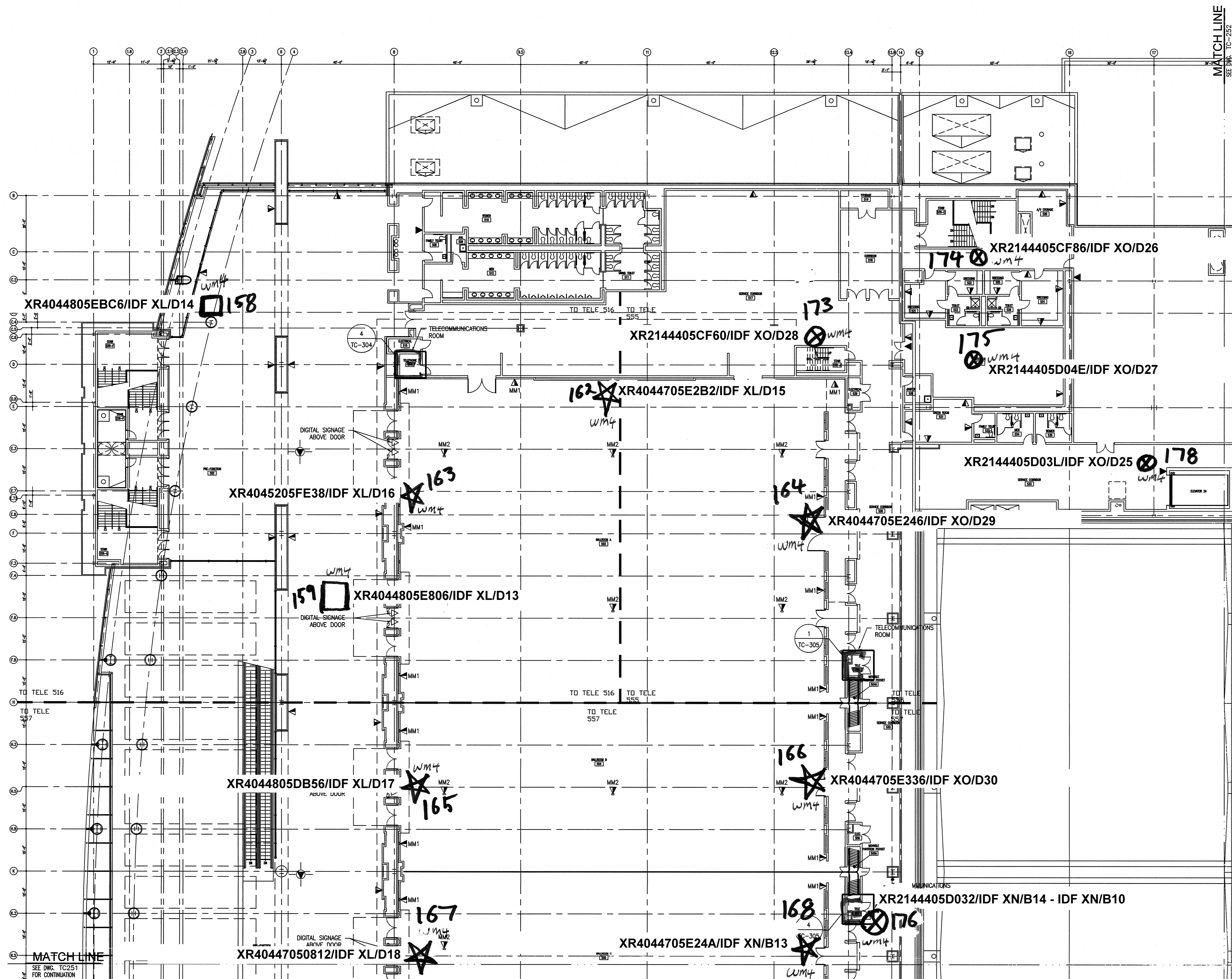
Drawing Sheet Title:

LEVEL-5  
TELECOMMUNICATIONS PLAN  
NW

Drawing Sheet Number:

**TC-250**

Owner's Drawing Sheet No.:



1 FIFTH FLOOR PLAN NORTHWEST  
SCALE: 1/16"=1'-0"

**LEGEND:**

- ▼ - STANDARD OUTLET = 2V/2D
- ▼ - SOLID OUTLET = 1V
- ▼ - VDF OUTLET = 2V/2D/4F
- ▼ - VD OUTLET = 4V/6D
- ▼ - OPEN OUTLET = 1D FOR BMS IP DEVICE
- ▼ - OPEN OUTLET = 1D FOR SECURITY IP DEVICE
- ▼ - OPEN OUTLET = #D FOR DIGITAL SIGNAGE, REFERENCED ON AV DWGS. AS - [DS]
- MM1 - MM1 OUTLET = 12D/4F (MTG. RMS.), REFERENCED ON AV DWGS. AS - [MP]
- MM2 - MM2 OUTLET = 4D/2F (BALL RM. FLOOR)
- WAP - WAP OUTLET = 2D

**NOTES:**

1. COORDINATE WITH SECURITY VENDOR FOR IP SECURITY DEVICE LOCATIONS.
2. COORDINATE WITH BMS VENDOR FOR FINAL BMS WAO LOCATION
3. ALL WORKSTATION LOCATIONS ARE APPROXIMATE. REFER TO ELV DRAWINGS FOR EXACT WORKSTATION LOCATIONS.