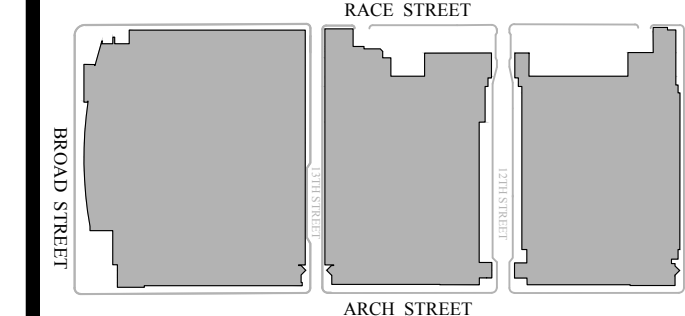
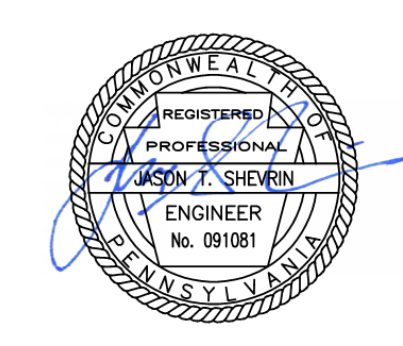




Key Plan



Seal



Revisions:

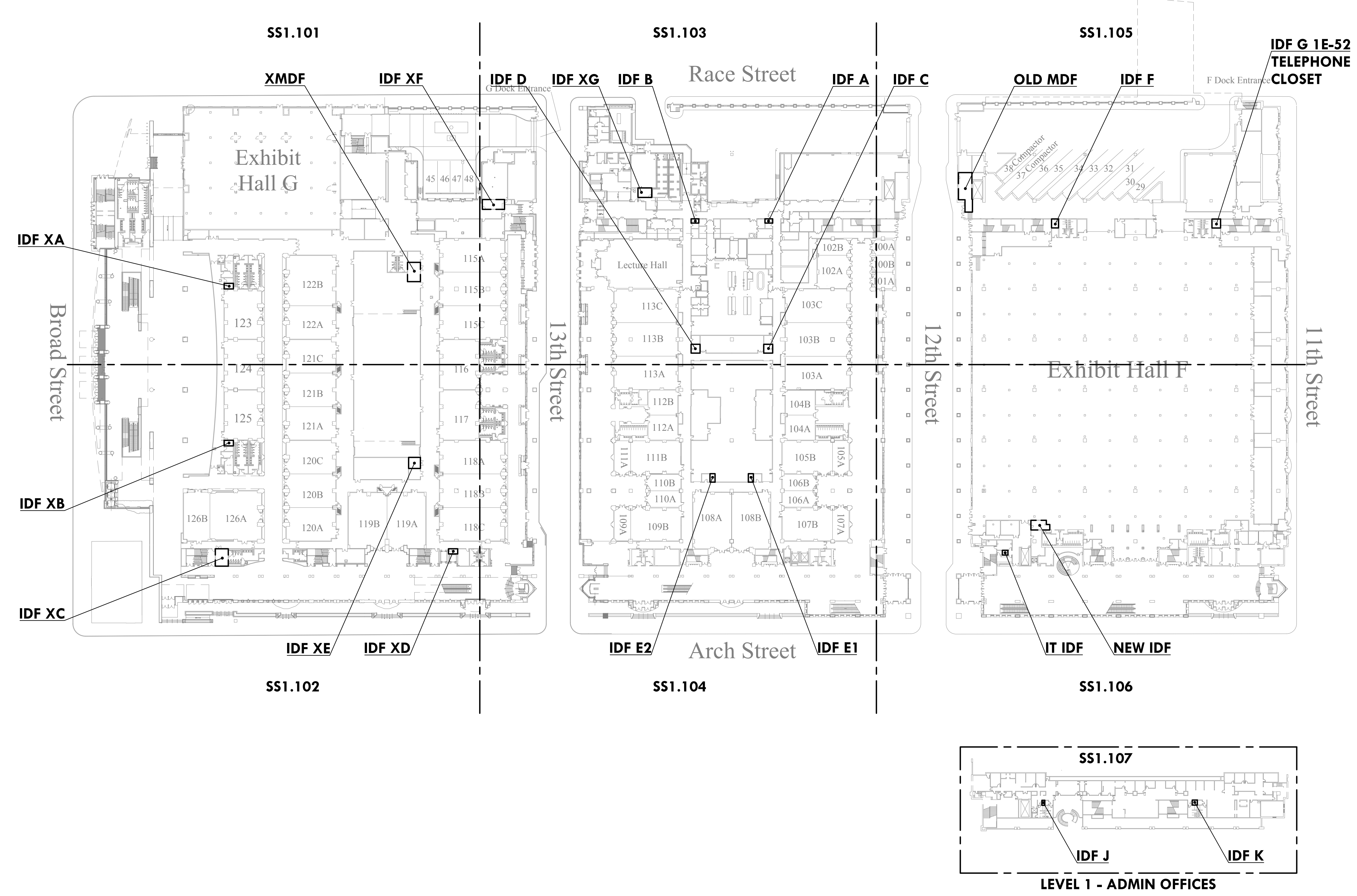
NO.	DESCRIPTION	DATE

PCCA WiFi UPGRADES
 1101 ARCH STREET
 PHILADELPHIA, PA. 19107
 PENNSYLVANIA
 CONVENTION CENTER
 AUTHORITY (PCCA)

LEVEL 1 OVERALL KEY PLAN

Project Number	128620.001
Date	2022-08-29
Drawn By	TB
Checked By	EH

SS1.100
 Scale AS NOTED



1 LEVEL 1 OVERALL KEY PLAN
 Scale: 1/64" = 1'-0"

THIS DRAWING IS FORMATTED TO BE PRINTED AT 36" X 42"

4/29/2022 9:13:53 AM \\cf-fs-01\projects\ACTIVE\128620.001 - pcca - facility-wide ft wireless\DWGS\CAD_SS

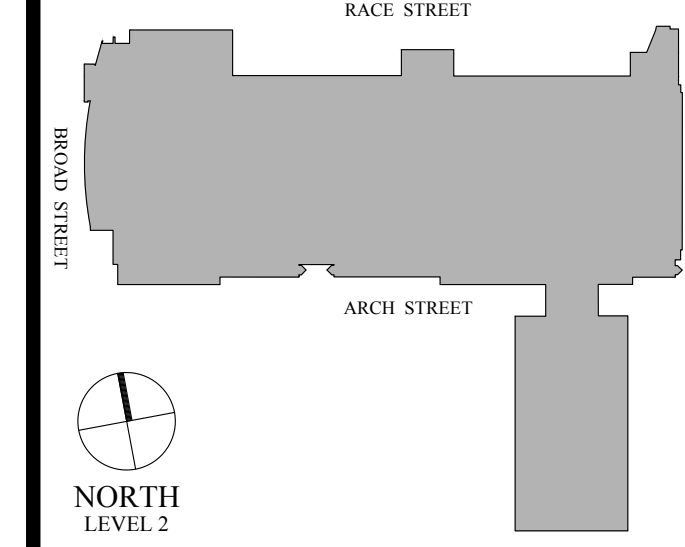
Architect

Civil Engineer

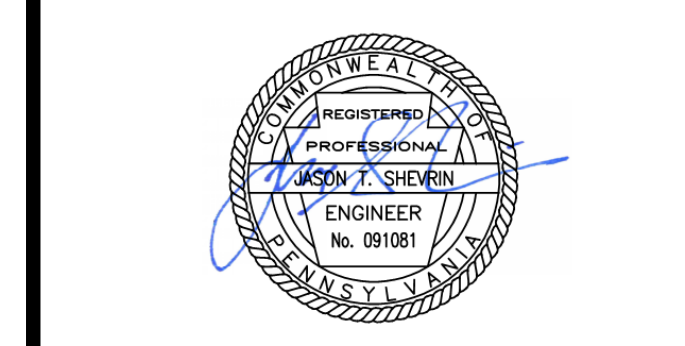
Structural Engineer



Key Plan



Seal



Revisions:

NO.	DESCRIPTION	DATE

PCCA WiFi UPGRADES
 1101 ARCH STREET
 PHILADELPHIA, PA. 19107
 PENNSYLVANIA
 CONVENTION CENTER
 AUTHORITY (PCCA)

LEVEL 2 OVERALL KEY PLAN

Project Number 128620.001

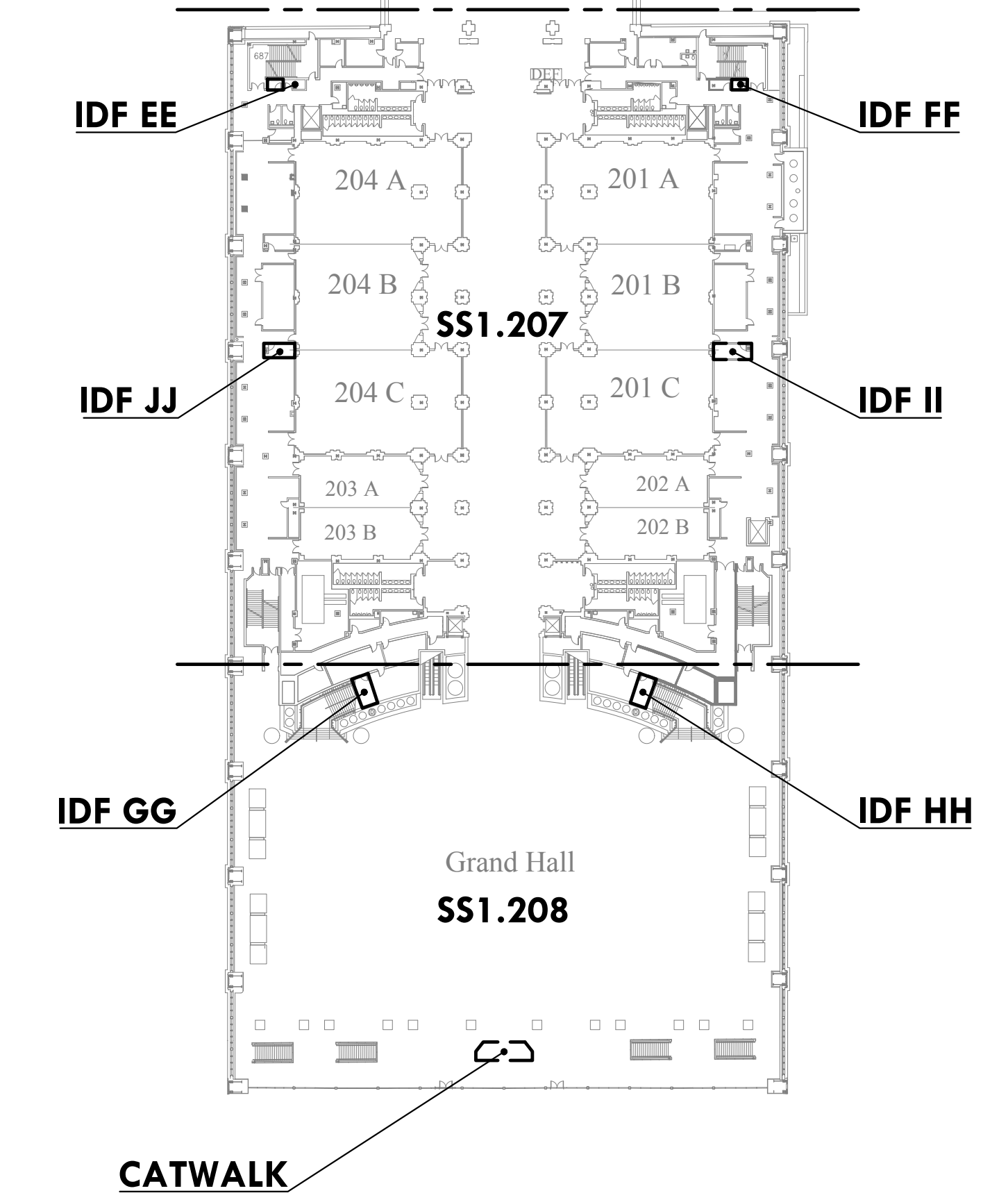
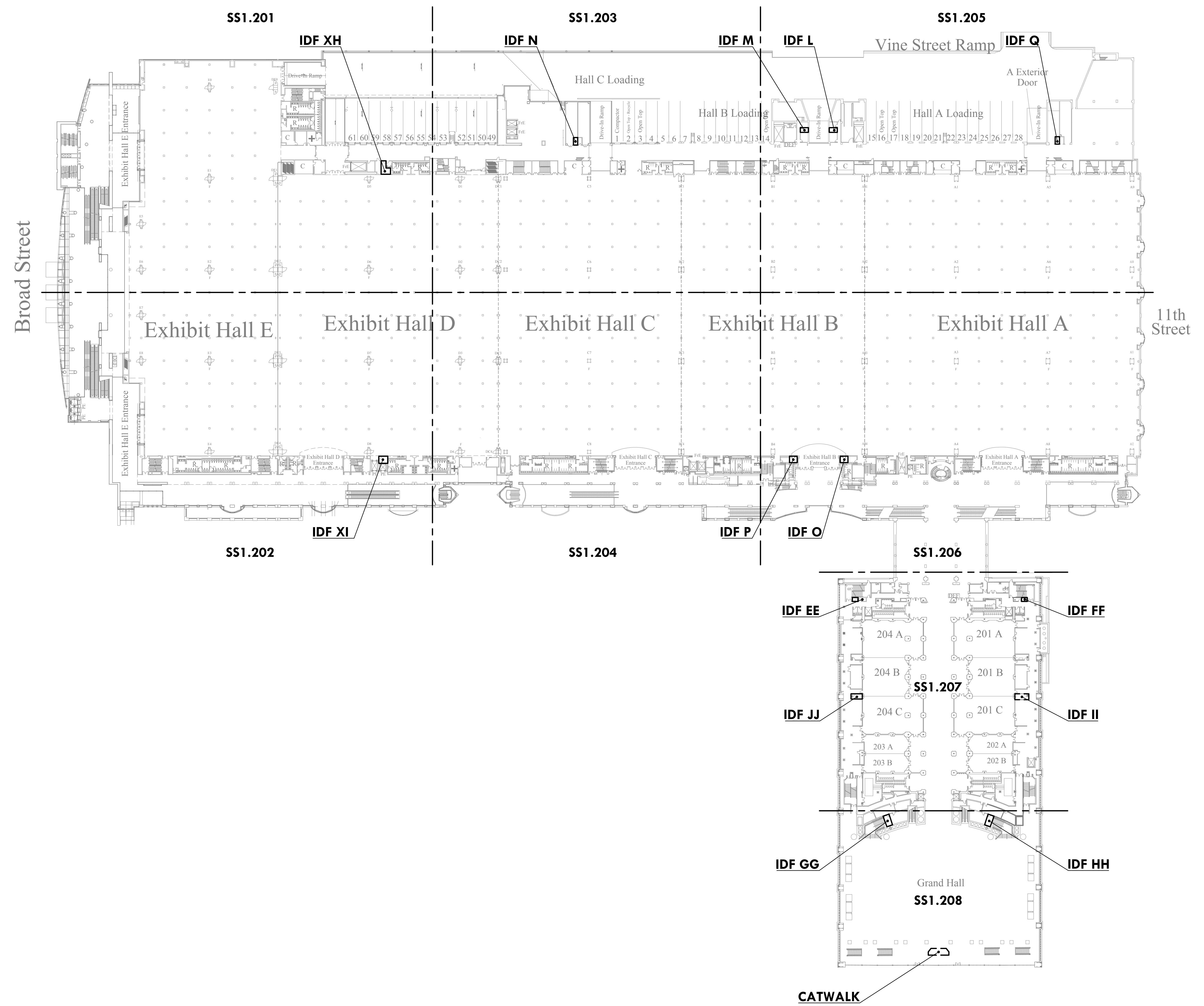
Date 2022-08-29

Drawn By TB

Checked By EH

SS1.200

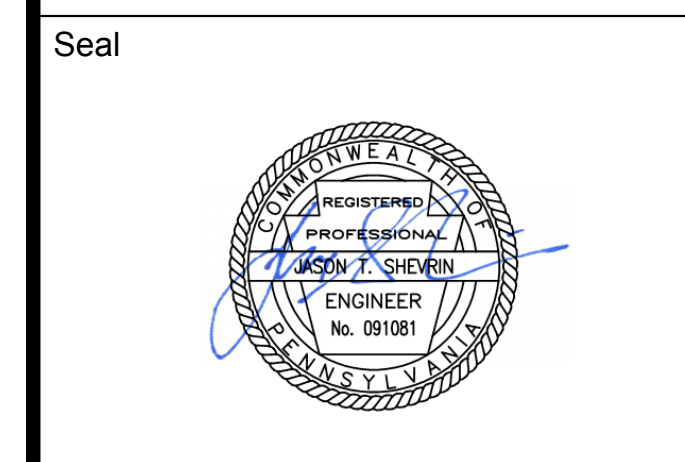
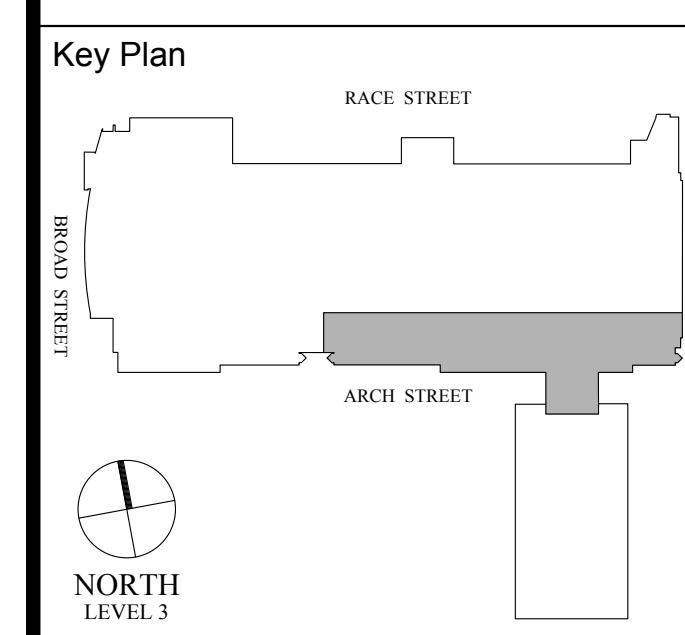
Scale AS NOTED



1 LEVEL 2 OVERALL KEY PLAN
 SS1.200 Scale: 1/64" = 1'-0"

4/29/2022 9:15:26 AM \\cf-fs-01\projects\ACTIVE\128620.001 - pcca - facility-wide ft wireless\DWG\CAD_SS

THIS DRAWING IS FORMATTED TO BE PRINTED AT 36" X 42"



Revisions:

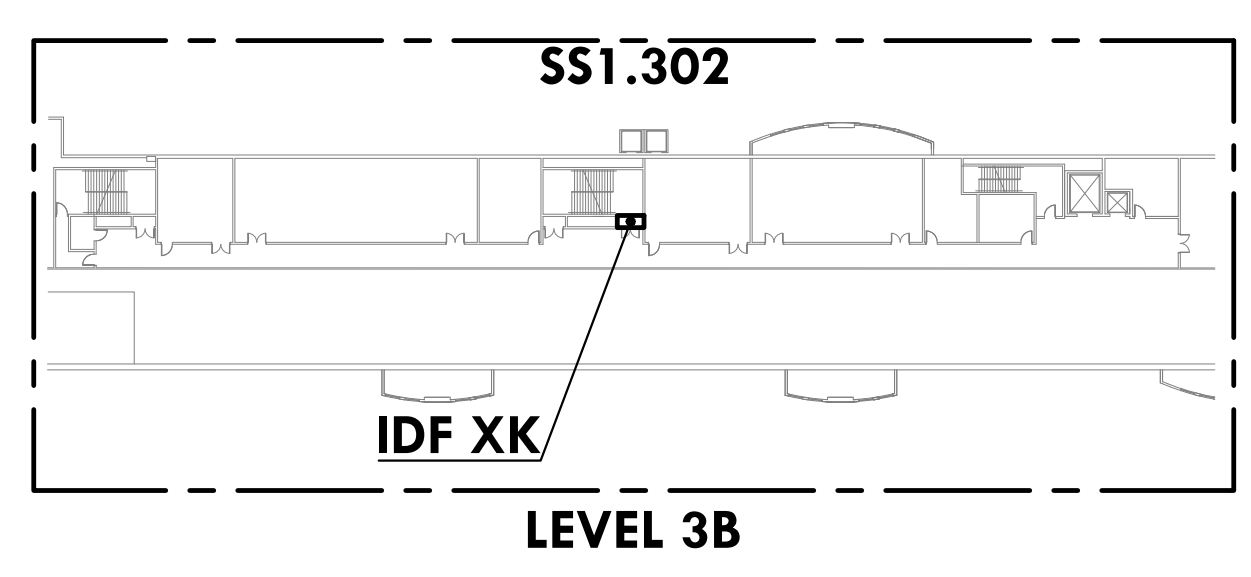
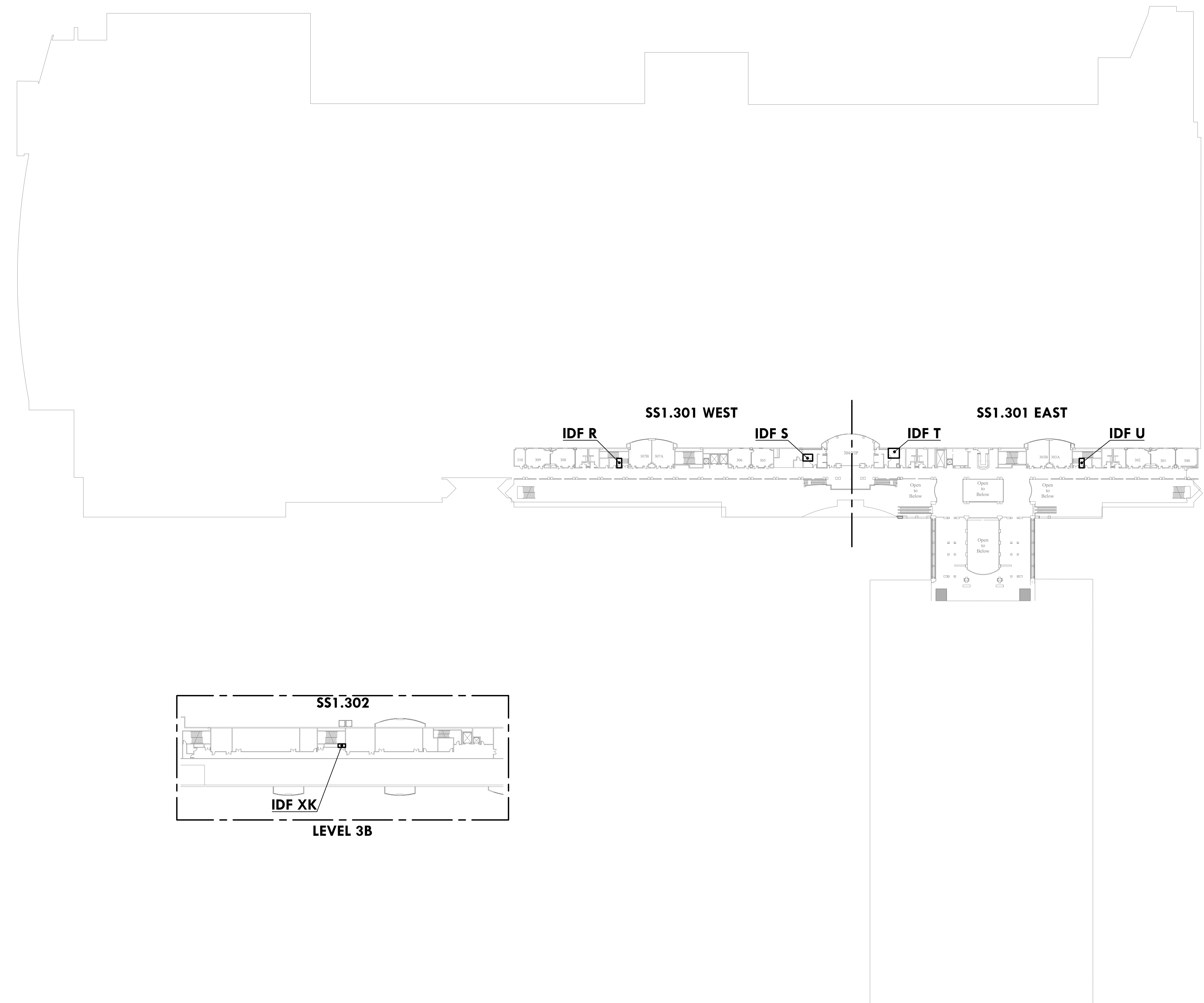
NO.	DESCRIPTION	DATE

PCCA WiFi UPGRADES
 1101 ARCH STREET
 PHILADELPHIA, PA. 19107
 PENNSYLVANIA
 CONVENTION CENTER
 AUTHORITY (PCCA)

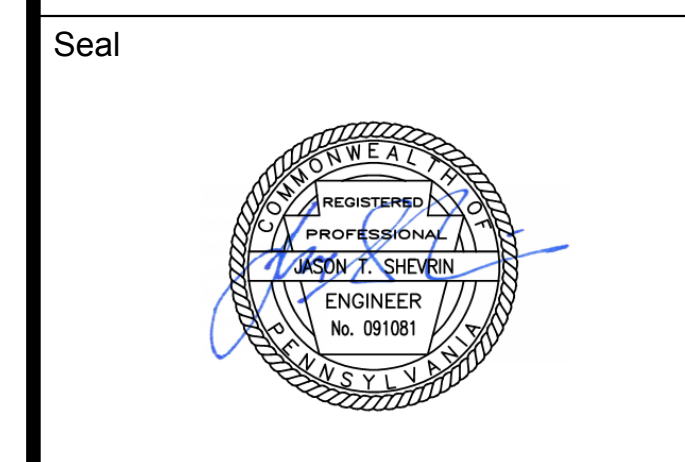
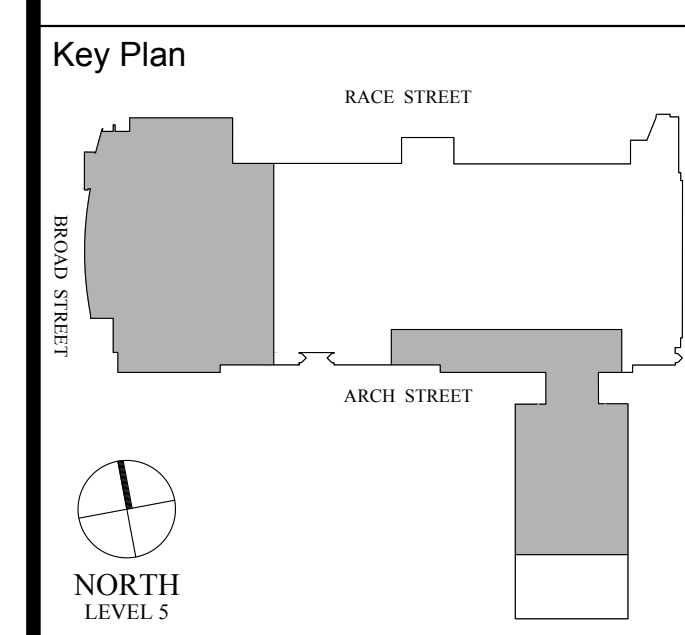
LEVEL 3 OVERALL KEY PLAN

Project Number	128620.001
Date	2022-08-29
Drawn By	TB
Checked By	EH

SS1.300
 Scale AS NOTED



1
 SS1.300 **LEVEL 3 OVERALL KEY PLAN**
 Scale: 1/64" = 1'-0"



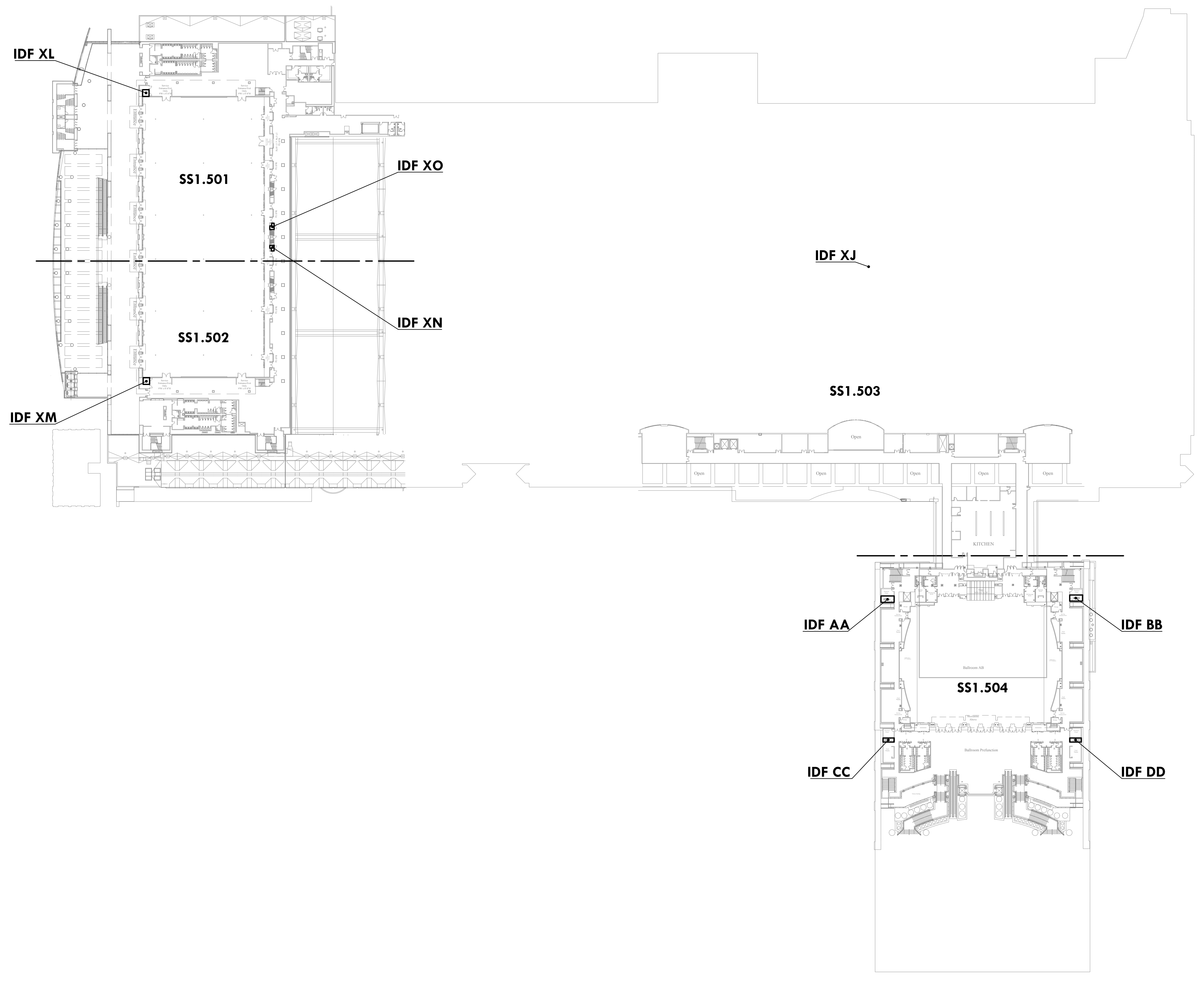
Revisions:

NO.	DESCRIPTION	DATE

PCCA WiFi UPGRADES
 1101 ARCH STREET
 PHILADELPHIA, PA. 19107
 PENNSYLVANIA
 CONVENTION CENTER
 AUTHORITY (PCCA)

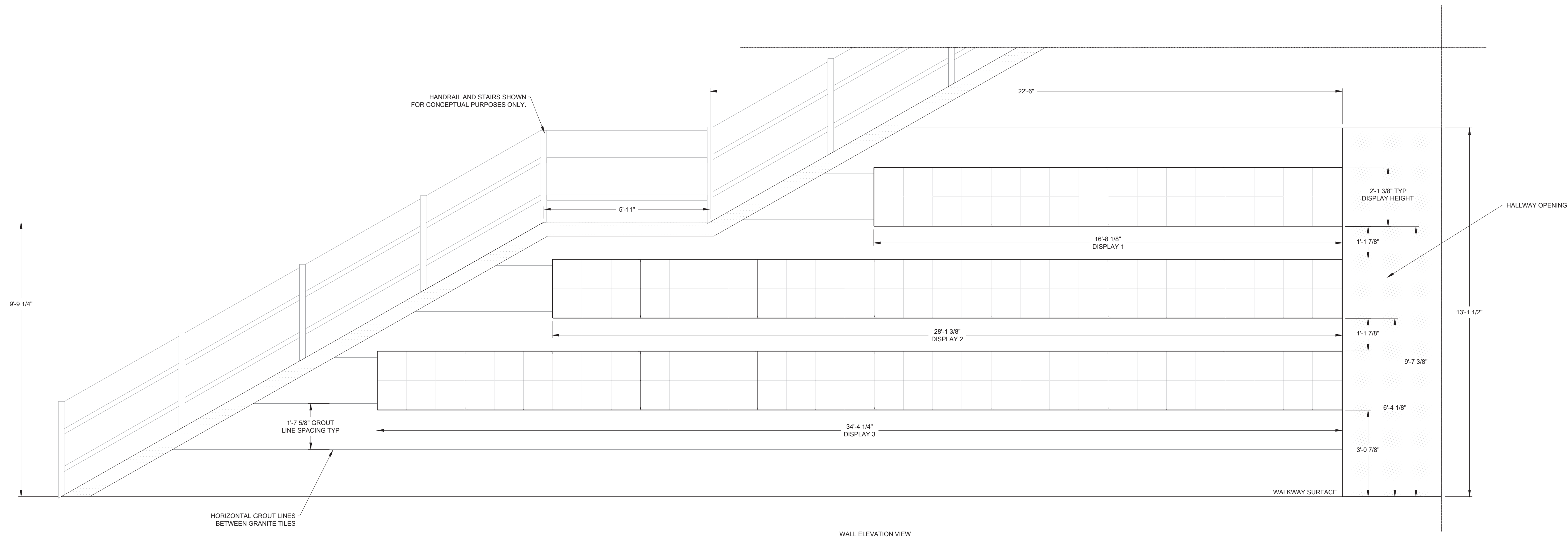
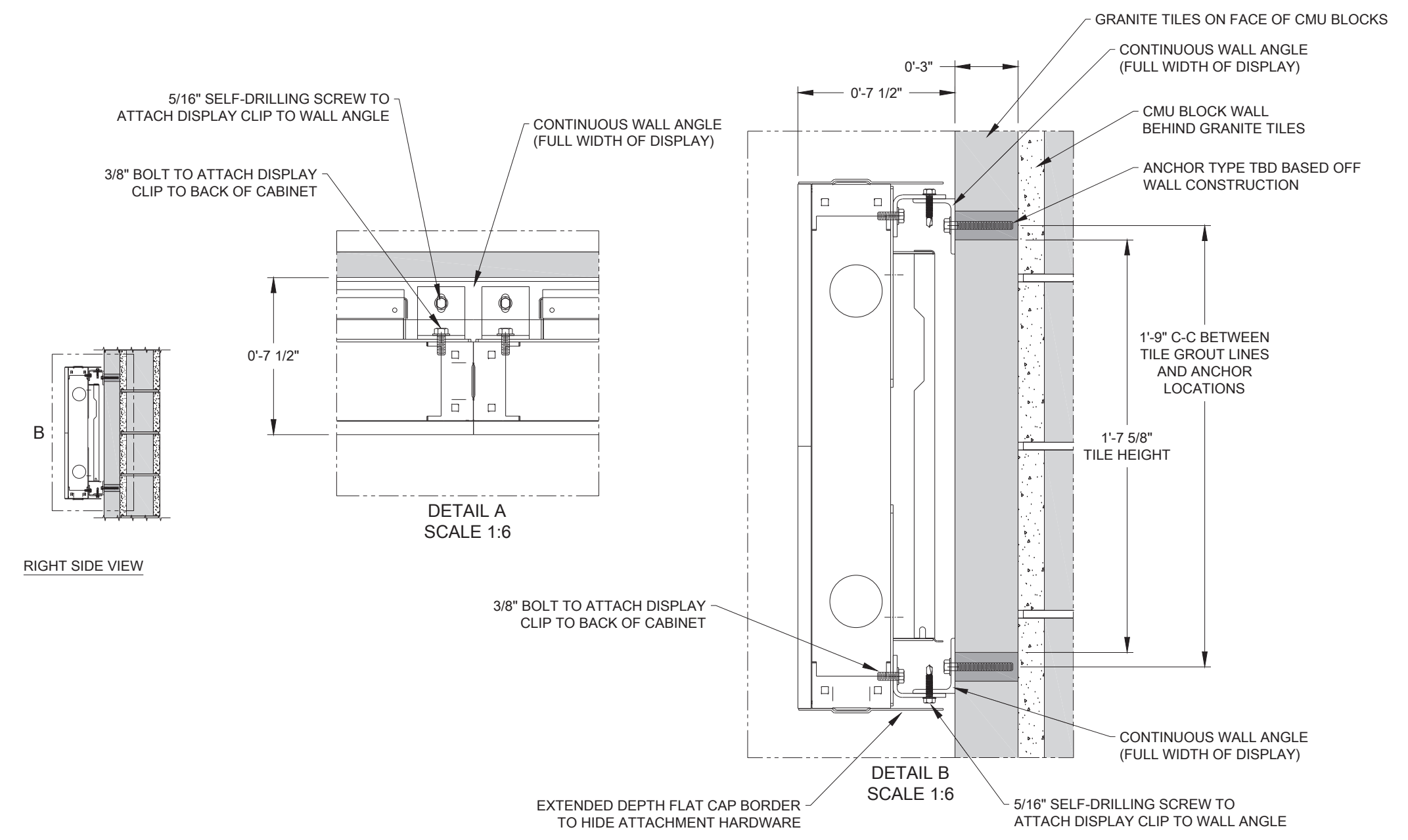
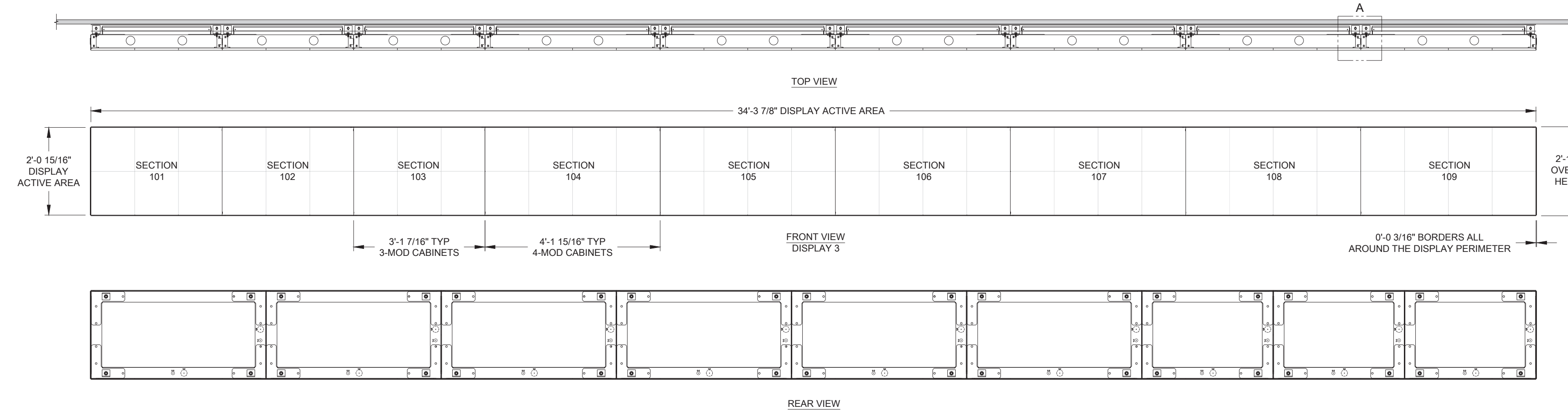
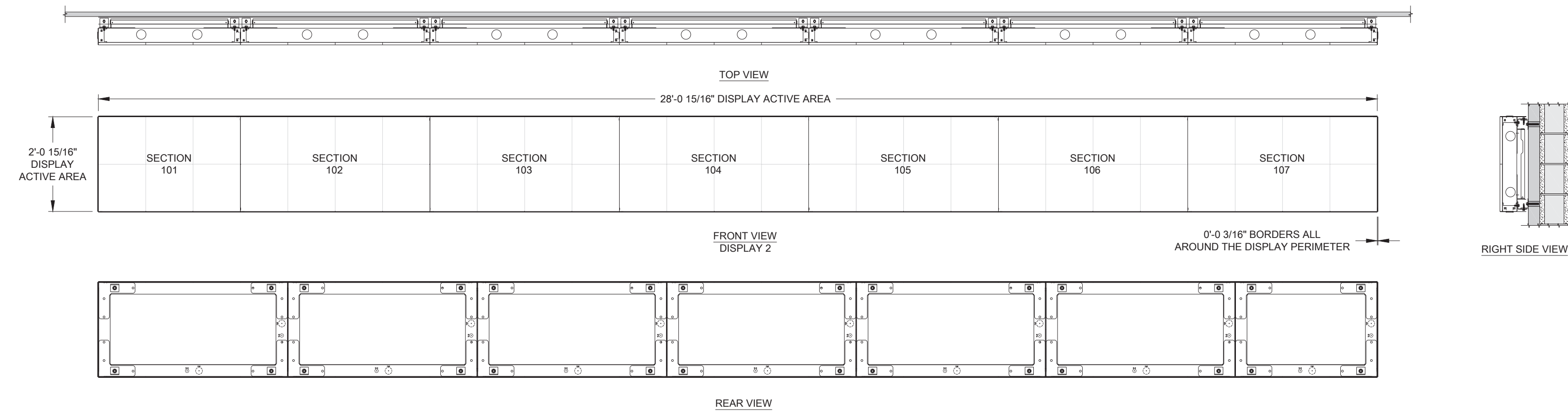
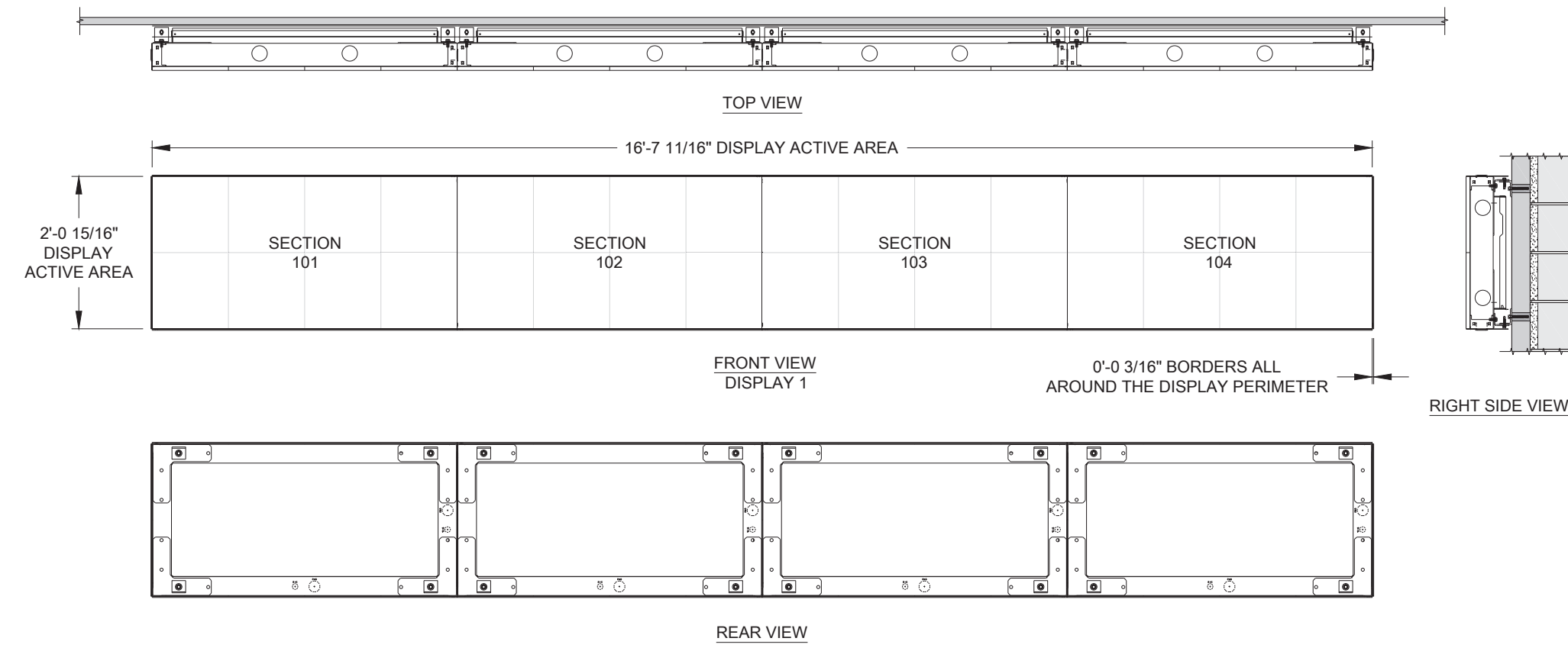
LEVEL 5 OVERALL KEY PLAN

Project Number	128620.001
Date	2022-08-29
Drawn By	TB
Checked By	EH
SS1.500	
Scale	AS NOTED



1 LEVEL 5 OVERALL KEY PLAN
 SS1.500 Scale: 1/64" = 1'-0"

Current digital display in Broad Street atrium



PENNSYLVANIA CONVENTION CENTER

1101 ARCH ST
PHILADELPHIA, PA 19107
USA

SUBMITTAL APPROVAL

APPROVED APPROVED AS NOTED APPROVED AS NOTED & RESUBMIT

COMPANY: _____

SIGNED: _____

TITLE: _____ DATE: _____

NOTES:

1.0 REFER TO SHEET 300 FOR PROJECT NOTES.

DISPLAY #1: TASK 8500

SECTION #	SECTION SIZE (HXW-MODS)	SECTION SIZE (HXW-PIXELS)	SECTION WEIGHT (LB)
101A	2X4	136X272	78
102A	2X4	136X272	78
103A	2X4	136X272	78
104A	2X4	136X272	78
DVN-4MN-2000-BC-136X1088 TOTALS			
# OF SECTIONS	DISPLAY SIZE (HXW-MODS)	DISPLAY SIZE (HXW-PIXELS)	TOTAL WEIGHT (LB)
4	2X16	136X1088	312

DISPLAY #2: TASK 8510

SECTION #	SECTION SIZE (HXW-MODS)	SECTION SIZE (HXW-PIXELS)	SECTION WEIGHT (LB)
201A	2X3	136X204	59
202A	2X4	136X272	78
203A	2X4	136X272	78
204A	2X4	136X272	78
205A	2X4	136X272	78
206A	2X4	136X272	78
207A	2X4	136X272	78
DVN-4MN-2000-BC-136X1836 TOTALS			
# OF SECTIONS	DISPLAY SIZE (HXW-MODS)	DISPLAY SIZE (HXW-PIXELS)	TOTAL WEIGHT (LB)
7	2X27	136X1836	527

DISPLAY #3: TASK 8520

SECTION #	SECTION SIZE (HXW-MODS)	SECTION SIZE (HXW-PIXELS)	SECTION WEIGHT (LB)
301A	2X3	136X204	59
302A	2X3	136X204	59
303A	2X3	136X204	59
304A	2X4	136X272	78
305A	2X4	136X272	78
306A	2X4	136X272	78
307A	2X4	136X272	78
308A	2X4	136X272	78
309A	2X4	136X272	78
DVN-4MN-2000-BC-136X2244 TOTALS			
# OF SECTIONS	DISPLAY SIZE (HXW-MODS)	DISPLAY SIZE (HXW-PIXELS)	TOTAL WEIGHT (LB)
9	2X33	136X2244	645

DESIGN IS PRELIMINARY FOR CONCEPTUAL PURPOSES ONLY

SUBMITTAL APPROVAL

APPROVED APPROVED AS NOTED APPROVED AS NOTED & RESUBMIT

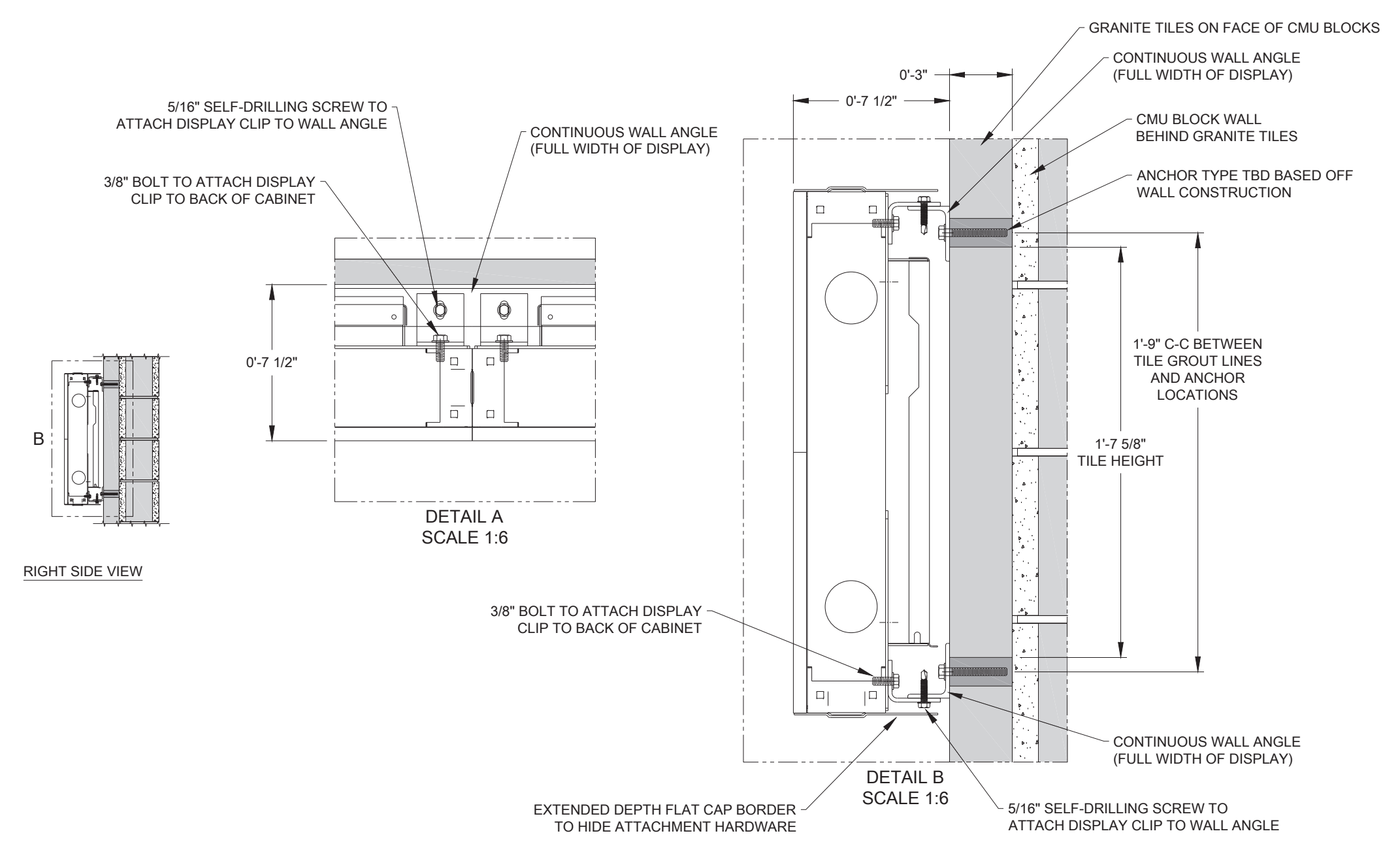
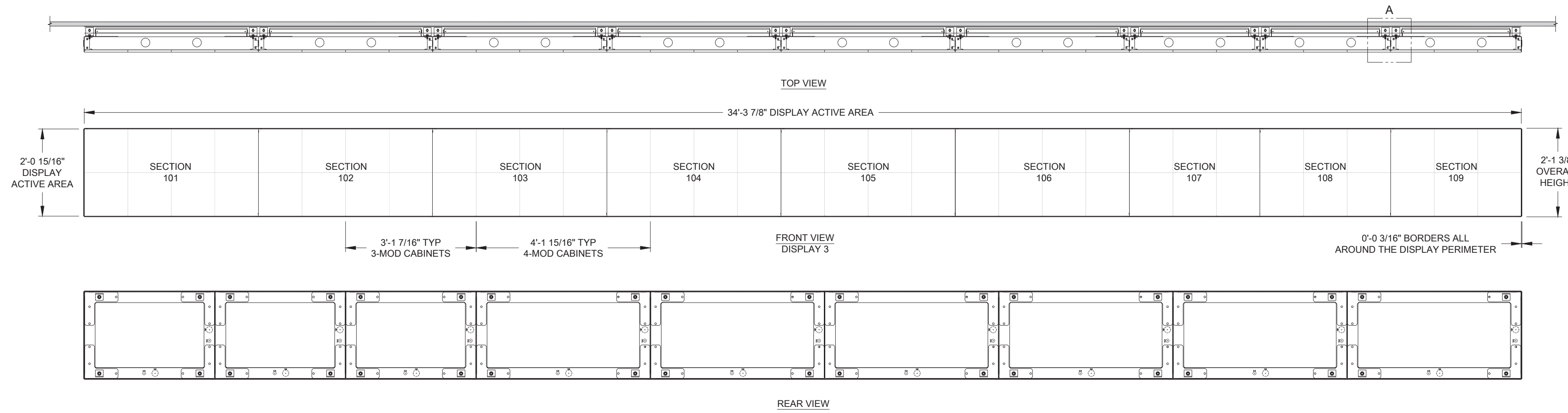
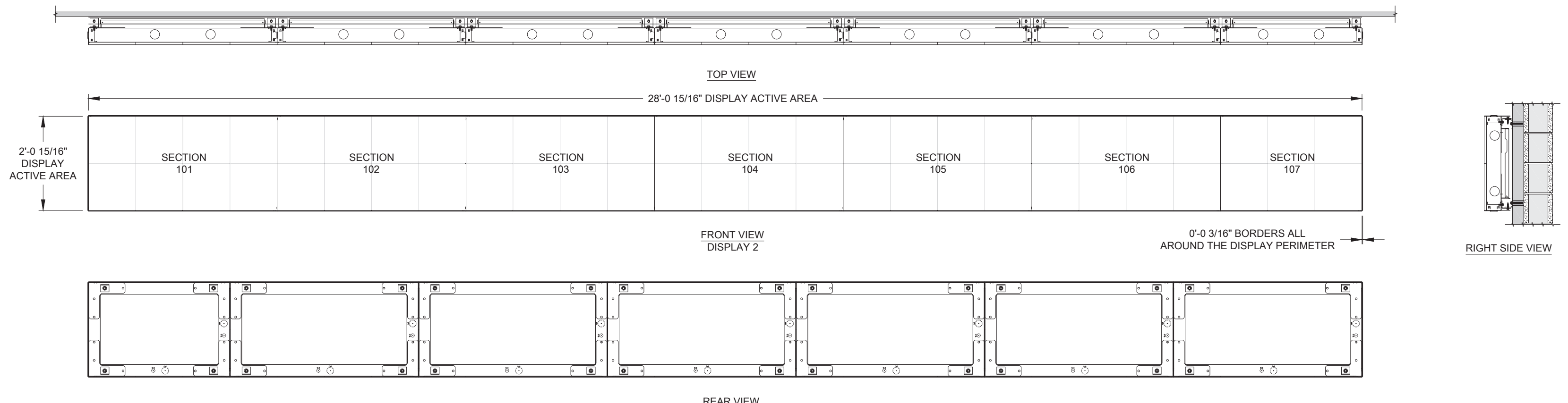
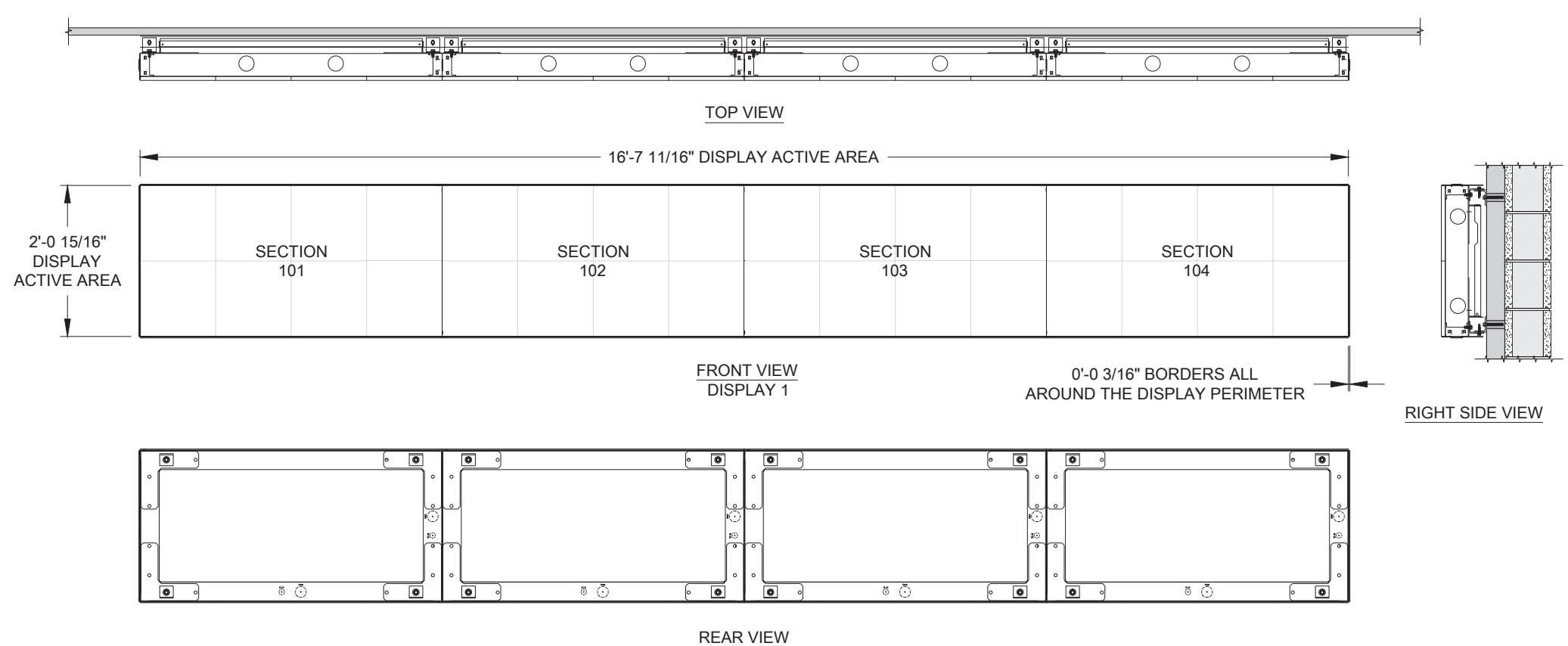
COMPANY: _____

SIGNED: _____

TITLE: _____ DATE: _____

NOTES:

1.0 REFER TO SHEET 300 FOR PROJECT NOTES.



DISPLAY #1: TASK 8700

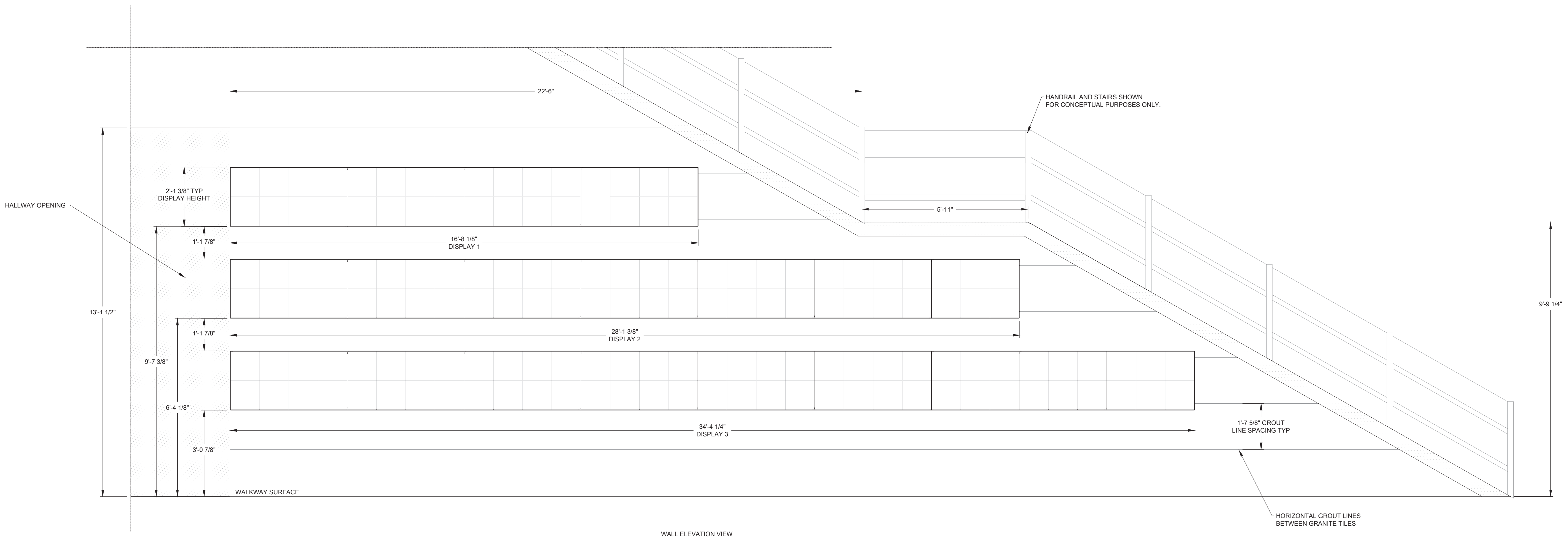
SECTION #	SECTION SIZE (HXW-MODS)	SECTION SIZE (HXW-PIXELS)	SECTION WEIGHT (LB)
101B	2X4	136X272	78
102B	2X4	136X272	78
103B	2X4	136X272	78
104B	2X4	136X272	78
DVN-4MN-2000-BC-136X1088 TOTALS			
# OF SECTIONS	DISPLAY SIZE (HXW-MODS)	DISPLAY SIZE (HXW-PIXELS)	TOTAL WEIGHT (LB)
4	2X16	136X1088	312

DISPLAY #2: TASK 8710

SECTION #	SECTION SIZE (HXW-MODS)	SECTION SIZE (HXW-PIXELS)	SECTION WEIGHT (LB)
201B	2X4	136X272	78
202B	2X4	136X272	78
203B	2X4	136X272	78
204B	2X4	136X272	78
205B	2X4	136X272	78
206B	2X4	136X272	78
207B	2X3	136X204	59
DVN-4MN-2000-BC-136X1836 TOTALS			
# OF SECTIONS	DISPLAY SIZE (HXW-MODS)	DISPLAY SIZE (HXW-PIXELS)	TOTAL WEIGHT (LB)
7	2X27	136X1836	527

DISPLAY #3: TASK 8720

SECTION #	SECTION SIZE (HXW-MODS)	SECTION SIZE (HXW-PIXELS)	SECTION WEIGHT (LB)
301B	2X4	136X272	78
302B	2X4	136X272	78
303B	2X4	136X272	78
304B	2X4	136X272	78
305B	2X4	136X272	78
306B	2X4	136X272	78
307B	2X3	136X204	59
308B	2X3	136X204	59
309B	2X3	136X204	59
DVN-4MN-2000-BC-136X2244 TOTALS			
# OF SECTIONS	DISPLAY SIZE (HXW-MODS)	DISPLAY SIZE (HXW-PIXELS)	TOTAL WEIGHT (LB)
9	2X33	136X2244	645



DESIGN IS PRELIMINARY FOR CONCEPTUAL PURPOSES ONLY

SUBMITTAL APPROVAL

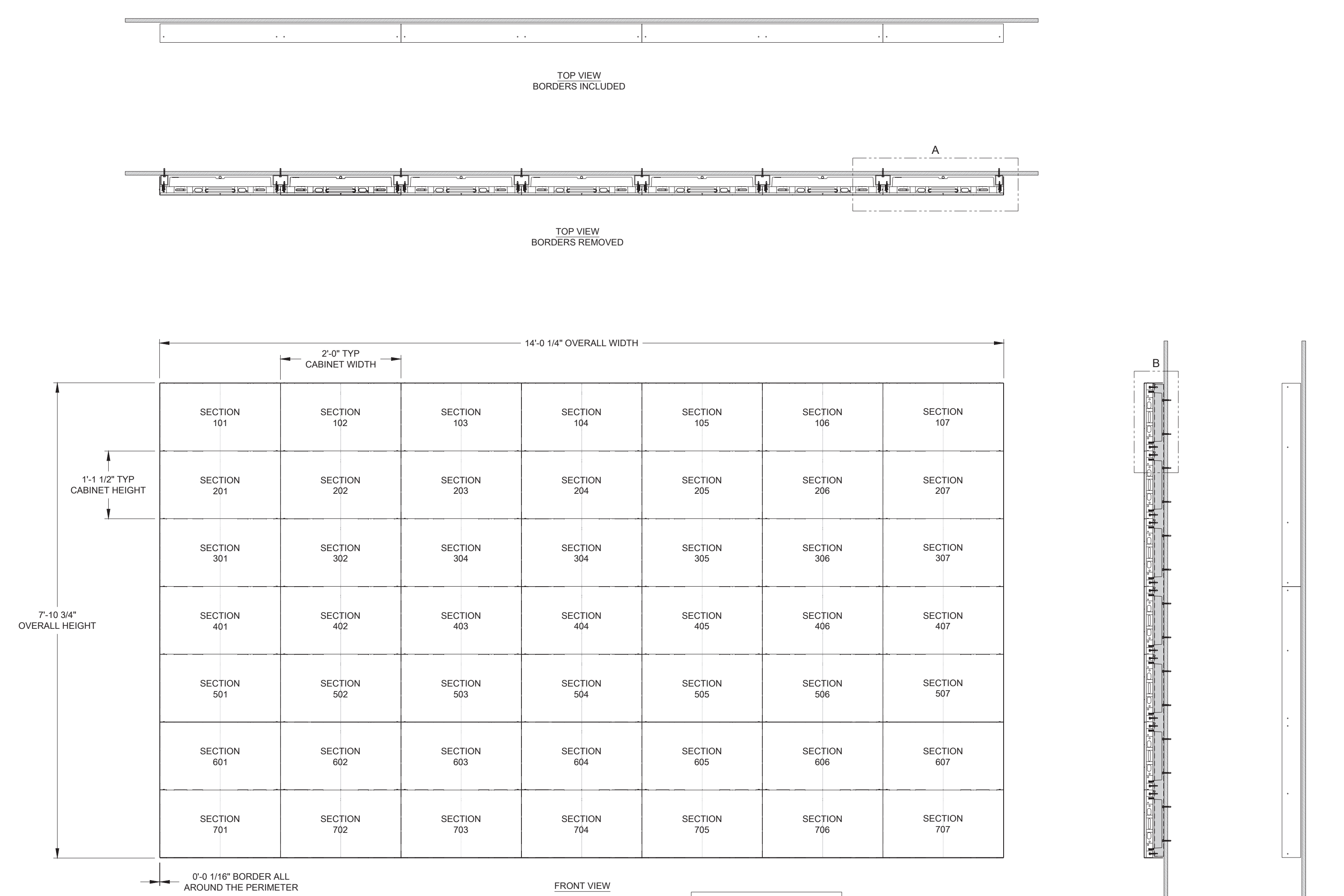
APPROVED APPROVED AS NOTED APPROVED AS NOTED & RESUBMIT

COMPANY: _____

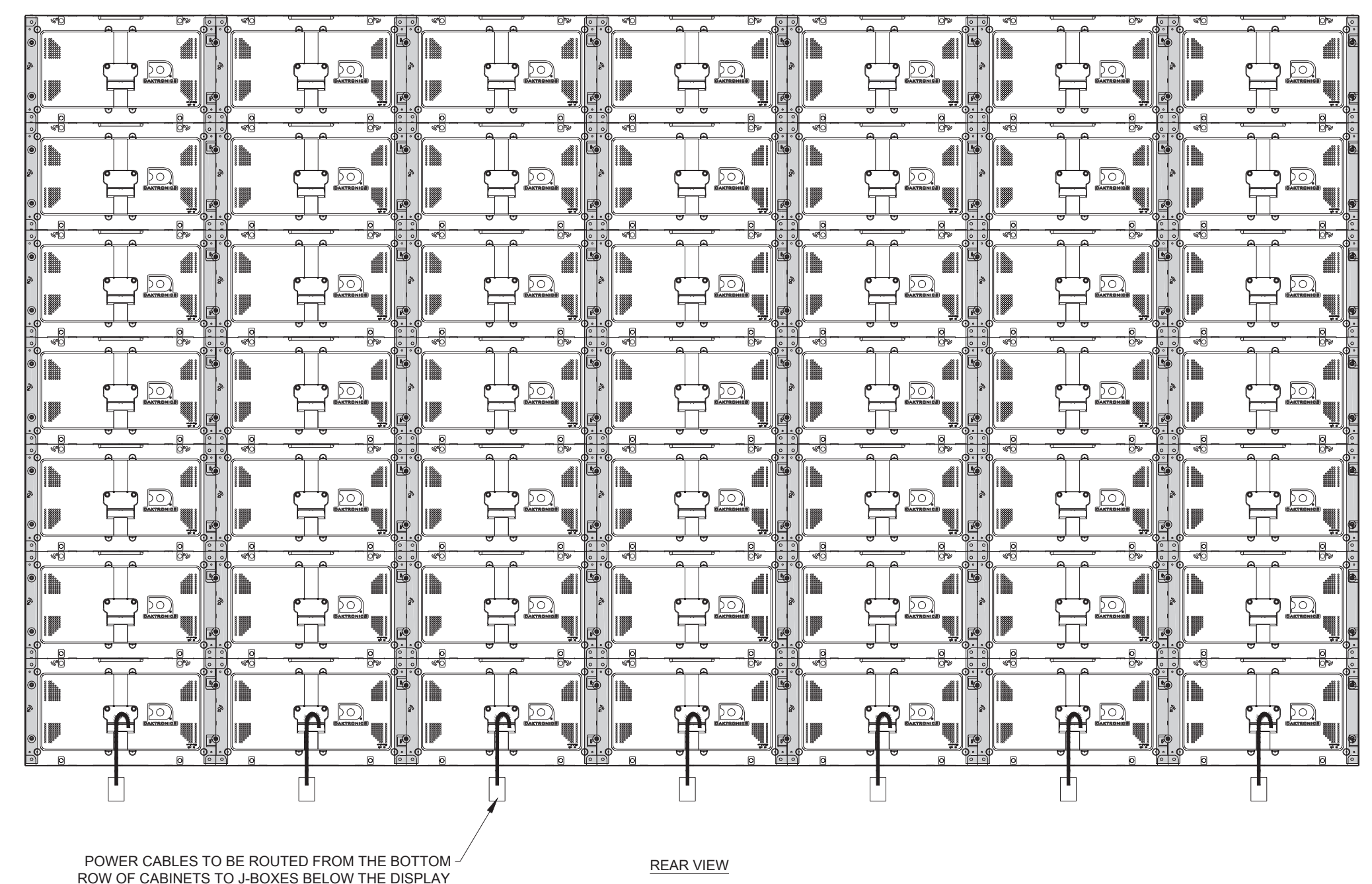
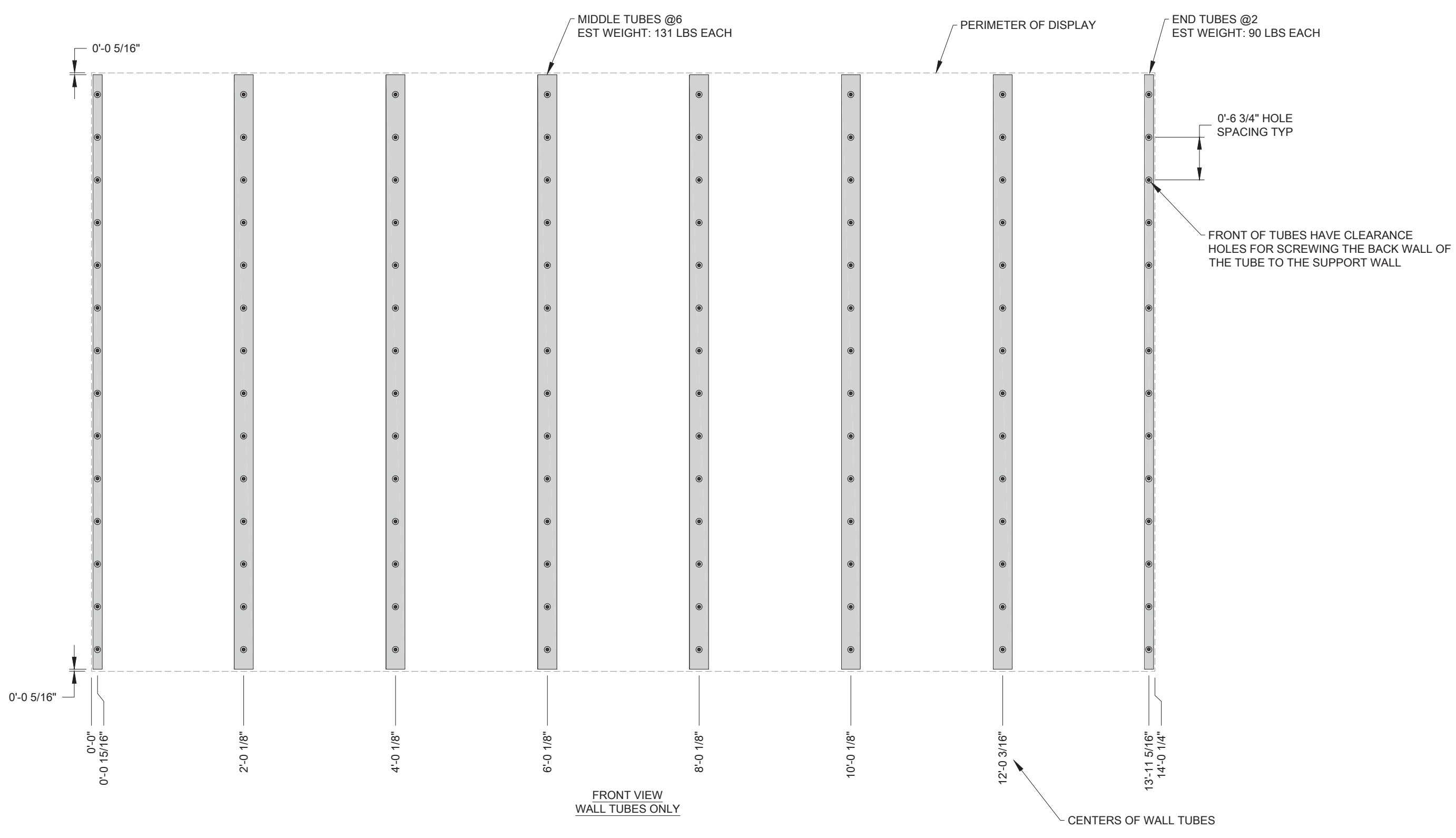
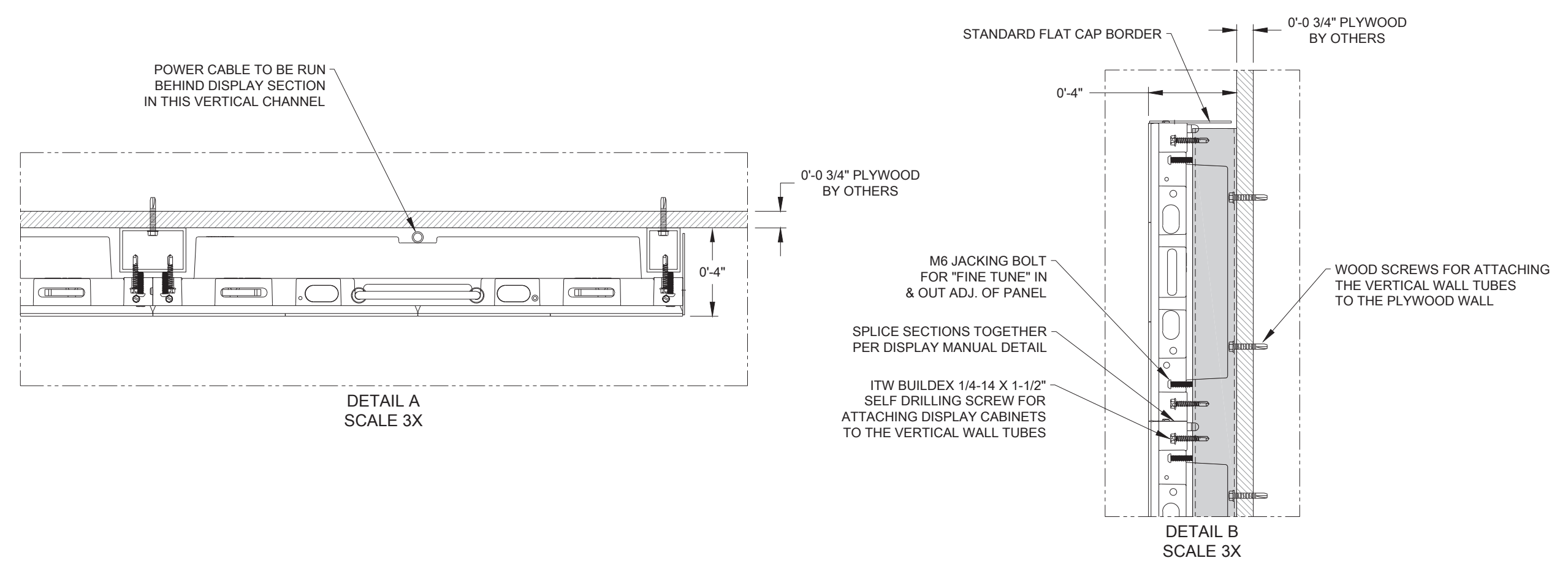
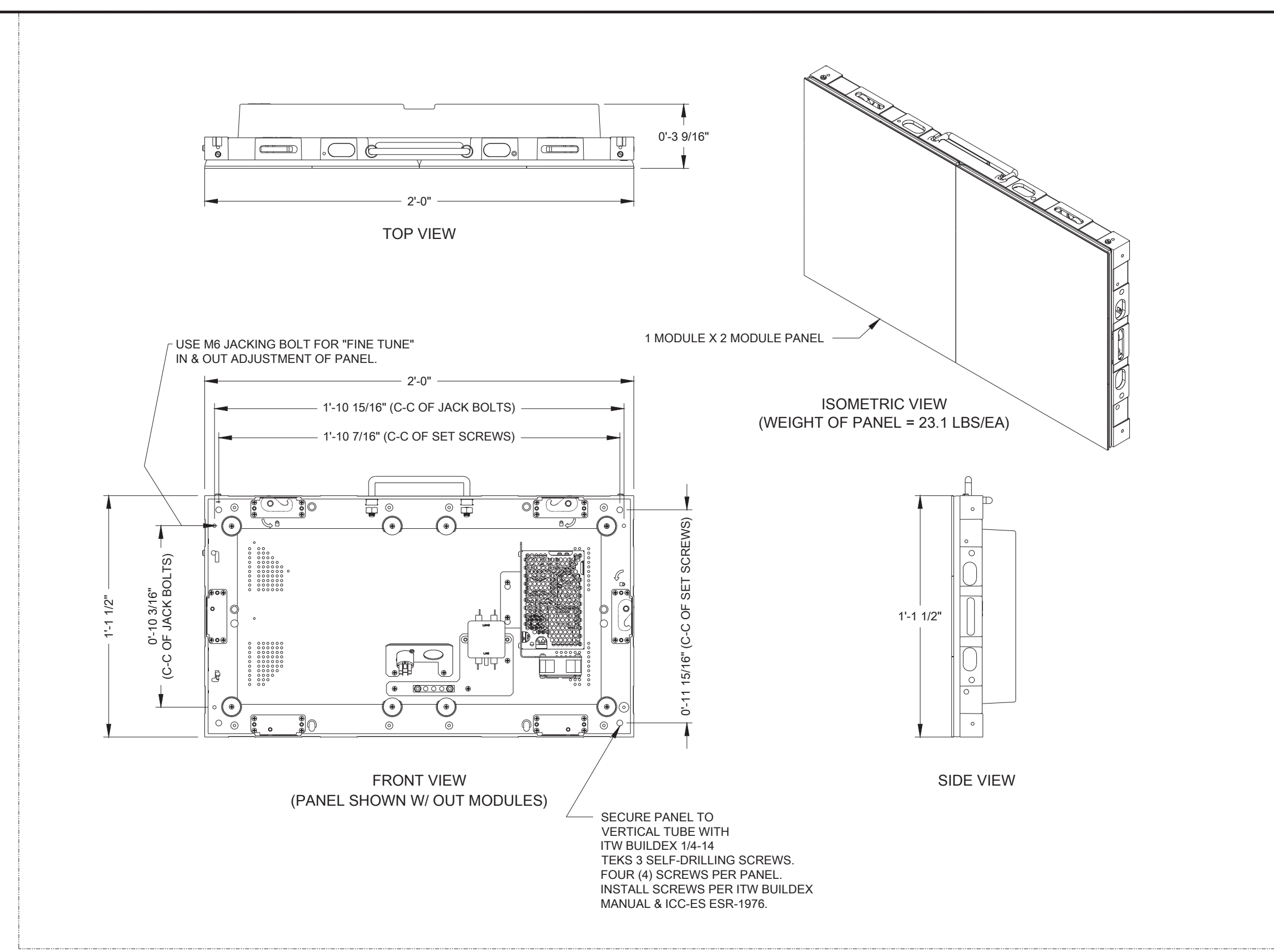
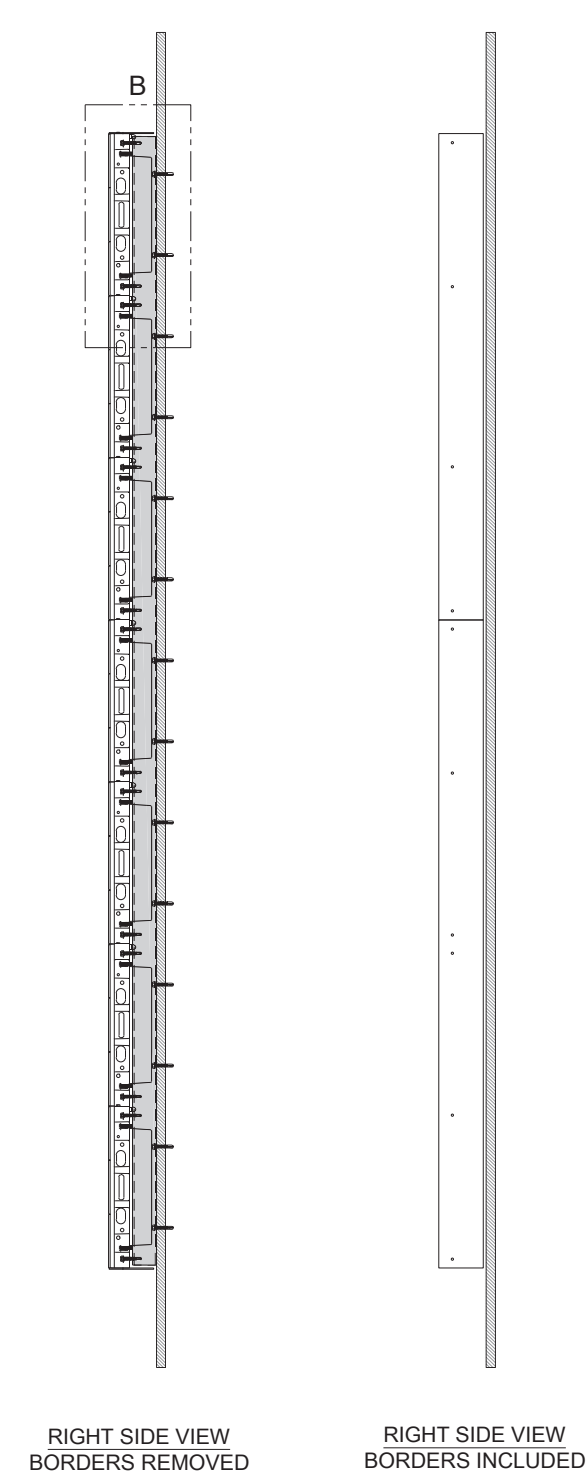
SIGNED: _____

TITLE: _____ DATE: _____

NOTES:
1.0 REFER TO SHEET 300 FOR PROJECT NOTES.



WEIGHT ESTIMATES:
VERTICAL TUBES: 966 LBS
DISPLAY SECTIONS: 1132 LBS
TOTAL WEIGHT: 2098 LBS





Chromebox Mini

*An Enterprise Ready Solution
Running on Chrome.*

Small, but powerful: the smallest enterprise-ready Chromebox today, designed for the signage, POS, corporate, and kiosk markets. Empowering customers with ease of experience and greater control of in-store engagement.

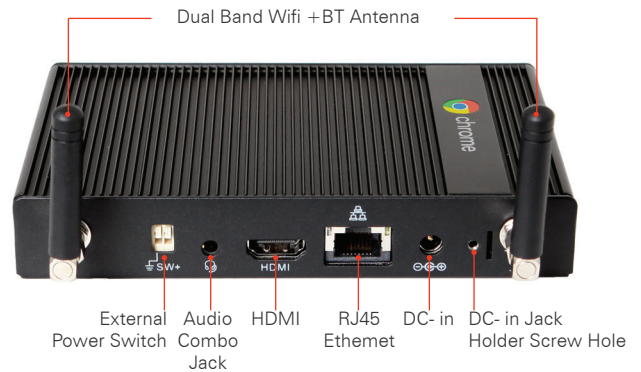
The AOPEN Chromebox Mini is a highly reliable and powerful enterprise grade solution that operates 24/7 under tough conditions (up to 40°C). It sets itself apart from any Chromebox, being the most flexible of its kind. The small size combined with strong computing power creates the perfect solution for any commercial or corporate environment. The Chromebox Mini ensures a speedy, simple, secure and scalable solution.

Deployment and management of the devices has never been easier using Chrome Device Management. This easy and powerful tool allows users to remotely manage entire fleets of AOPEN Commercial Chrome devices.

The advantages of the Chromebox Mini:

- Tough and tamperproof design for 24/7 operability in commercial and public environments (<40°C/104°F).
- Smallest chrome form factor available in the market today, for easy integrations.
- A cost-effective solution for lower TCO.
- The solid-state and fanless design ensure a first-rate performance in rigid environment.
- AC Power Auto Recovery (APAR).
- Included dual band antenna offers a wide reach.
- Kiosk and POS device extensions via commercial ports.
- Optional Chrome Device Management on request to save valuable time, costs on installation, programming and maintenance.





Chromebox Mini

Specifications			
Features	The most flexible Enterprise Ready Grade Solution in the market today. Running on the Chrome OS. APAR (AC Power Auto Recovery)	Front Panel I/O	USB 2.0 port support BC1.2 x 3
Commercial Features	Operating Shock 8G, Operating Temperature up to 40°C/104°F		Power Button with LED x 1
Operating System	Chrome OS	Real Panel I/O	Power switch x 1
CPU	Rockchip RK3288C Quad-Core Cortex-A17 turbo up to 1.8GHz		HDMI x 1
Graphics	ARM Mali-T764 MP4 GPU clocked at 600 MHz		Ethernet RJ45 x 1
Memory	Dual Channel 4GB LPDDR3 Memory down design		Audio Combo Jack x 1 (Line out/Line in)
Storage	EMMC 5.0 16 GB		Antenna hole x 2
LAN	Gigabit 10/100/1000 Mbps	Environment	Wide Votage Range DC input DC 15~50V power inlet Jack x 1
Form Factor	Dimensions (WxDxH) 146 x 93 x 24 mm 5.75 x 3.8 x 0.94 inch		Operating Temperature 0°C ~ 40°C 32°F ~ 104°F
	Net Weight 403g		Storage Temperature -20°C ~ 60°C -7°F ~ 140°F
	Color Black		Relative Humidity 90%@50°C
Display	GPU with ARM Mali-T764 GPU, with TE, ASTC, AFBC technology (Images & Basic HTML only). Limited Video Playback Up to 1080p display resolution Image enhancement processor		Vibration Random 2Grms
Audio	Audio with Maxim MX98090	Accessories	User Manual Power Cord/ Power Cord Clip 40W AC to DC 19V Adapter 2.4/5G dual band Antenna (x 2)
Networking	Giga LAN Realtek RTL8211E-VB with LED indicate Wi-Fi+ Bluetooth; WiFi 802.11 b/g/n/ac + BT4.0	Optional Accessories	POS peripheral connectors: Mounting Rails
		Warranty	The Chromebox Mini comes with a 1 year warranty. Extended warranty optional for 3 years.