

ADDENDUM #1

FOR

BID – AV for Overlook Boardroom

5/9/2023

Clarifications:

- 1) We revised the drawings to include some multi-mode cabling and connectors to each of the TFP connector plates. We also added two (qty 2) 5-inch, empty conduits with pull lines. Please see attachments for the changes.
- 2) Bids may be emailed to Lisa Dobbertin (ldobbertin@paconvention.com) and Steve Shepper (sshepper@paconvention.com) in lieu of dropping off hard copies. Please make sure you get an email in reply acknowledging receipt of your bid before 4PM of bid day from Lisa or Steve. Our system often sends emails with attachments to our spam folder. We will also have a Bid box set up at 12th and Arch entrance (East side, across from Reading Terminal Market) if you would like to drop off a hard copy. Bid results will be emailed out to all those that submitted bids after 4PM of bid day.
- 3) We had some questions regarding missing specifications. Please make sure when you download the project documents, you are downloading the full document. The page numbers for each document of the project are listed in the bid paperwork and on the project site. Make sure the page numbers match up to what is listed.

Questions:

- 1) Is the intent to award all to one GC? Example, is it possible that we could be awarded the boardroom but then another contractor is awarded the restrooms or the CM part? **Answer: The intent is not to award all to one GC. The CM contractor will be different than those awarded for the restroom work or boardroom work. It is possible for the GC for the restrooms and GC for the boardroom to be the same, if their bid numbers are the lowest for both bids, but that's not the intent.**
- 2) In the Diversity Exhibits we need to state if we were able to reach a commitment? And if so there needs to be a letter of intent. I just wanted to clarify your definition of commitment. Because then we also are unsure of how to provide a letter of intent at just the bid stage when we are unaware if we were even awarded the project. **Answer: The commitment and letter of intent should be based on IF you are awarded the project. In the letter of intent you should state, for example, "If awarded the Overlook Restroom Renovations at the PA Convention Center, we commit XX (specify exact amount) to your company."**

Attachments:

- 1) Updated AV Drawings: (7pages) Includes six (qty 6) updated AV drawings plus one (qty 1) new drawing (AV4.03)
- 2) Addendum to Spec Section 267610: (1 page) for Rough-In Requirements for AV

**SECTION 267610
AV ROUGH IN REQUIREMENTS
AV BULLETIN 1**

1.10. SCOPE OF WORK

Add the following:

- N. Provide two 5" Empty conduit systems as shown on the AV Bulletin 1 drawings.

Provide nylon bushings at both ends of the conduit path.

Provide all conduit, hangers, supports and related appurtenances in compliance with current building electrical standards.

Provide nylon pull lines within each conduit.

END OF SECTION 26 76 10 AV BULLETIN 1



ACOUSTICS - AUDIO VIDEO - TECHNOLOGY INFRASTRUCTURE
Consulting & Design Since 1971
KMK Technologies LLC Glassboro, New Jersey
www.KMKINC.com Telephone: 215-600-3187
An NIS Company



Pennsylvania Convention Center

OVERLOOK CONFERENCE ROOM

AV SYSTEMS

Rev#:	Date:	Description:	By:
1	08/18/2022	Review/Comment	TWK
2	10/10/2022	Released for Bid	TWK
3	05/08/2023	AV Bulletin 1	TWK

AUDIO VIDEO SYSTEMS							
					05-08-2023AV Bulletin 1 10-10-2022 Bid Set	DRAWING INDEX May 08, 2023	
Sheet	Description						
	● ● AV-0.01	AV System Drawing List And Miscellaneous Legends					
	● ● AV-0.02	AV System Device Legends					
	● ● AV-1.01	AV System Device Locations In Plan					
	● ● AV-1.02	AV System Sample Furniture Plans					
	● ● AV-2.01	AV System Device Locations In Rcp					
	● ● AV-3.01	AV System Credenza Details					
	● ● AV-4.01	AV System Plate & Panel Details Part 1					
	● ● AV-4.02	AV System Plate & Panel Details Part 2					
	● ● AV-4.03	AV System Plate & Panel Details Part 2					
	● ● AV-5.01	AV System Audio Single Line Diagram Part 1					
	● ● AV-5.02	AV System Audio Single Line Diagram Part 2					
	● ● AV-5.03	AV System Audio Single Line Diagram Part 3					
	● ● AV-5.04	AV System Audio Single Line Diagram Part 4					
	● ● AV-6.01	AV System Video Single Line Diagram					
	● ● AV-7.01	AV System Network & Control Single Line Diagram Part 1					
	● ● AV-7.02	AV System Network & Control Single Line Diagram Part 2					
	● ● AV-8.01	AV Systems AC Power Single Line Diagram					
	● ● AV-9.01	AV Systems Rack Elevation Diagram					

WIRE & CABLE LEGEND		
SYMBOL	DESCRIPTION	MANUFACTURER & MODEL #
A1	Audio Cable Single Shielded Pair #22 AWG, Plenum Rated	West Penn 25291
CAT6	Category 6 Cable, Plenum Rated	West Penn 254246
CC	Camera Control Cable, Plenum Rated	West Penn 25359B
DTP	XTP/DTP 24 Shielded Twisted Pair Cable, Plenum Rated	Extron XTP DTP 24P/1000
FO6	6 Strand TeraSPEED® Distribution Cable, Plenum Rated	CommScope P-006-DZ-8W-FSUYL
FO12	12 Strand TeraSPEED® Distribution Cable, Plenum Rated	CommScope P-012-DZ-8W-FSUYL
HD3	3' Select High Speed HDMI Cable, In-Wall Rated	C2G 50625
IC2	(1) Shielded Pair #20 AWG, (1) Unshielded Pair #20 AWG, Plenum Rated	West Penn 25359B
OM3	12 Strand OM3 armored Fibre Optic cable, Plenum	Belden F1SD012A9
S14	Speaker Cable Twisted Pair #14 awg, Plenum Rated	West Penn 25226B
S16	Speaker Cable Twisted Pair #16 awg, Plenum Rated	West Penn 25225B
SDI	RG6 Digital Video Cable, Plenum Rated	West Penn 256350
USB6	6.6' USB 3.0 A/B Cable	C2G 54174
MM06	6 Strand Multimode OM3 Armored Fibre Optic Cable	Belden, CommScope or equivalent

CONNECTOR LEGEND	
SYMBOL	DESCRIPTION
BNC	BNC Connector
CS#	Captive Screw Termination (# denotes quantity of terminations)
F	F Connector
DVI-D	DVI Digital Connector, Male
DVI-I	DVI Interface Connector, Male
DB9M	9 Pin DB Connector, Male
DB9F	9 Pin DB Connector, Female
HDMI	HDMI Connector, Male
HD15	15 Pin HD Connector, Male
PD	Patch Down Termination
SLDR	Solder Termination
LC	LC Type Fiber Optic Termination
SC	SC Type Fiber Optic Termination
ST	ST Type Fiber Optic Termination
XLRF	XLRF Connector, Female
XLRM	XLRF Connector, Male
NL4	Speaker Connector, Male
RJ45	RJ45 Connector, Male

A AV System Cover Sheet
AV-0.01 Scale: Not to Scale

B Cable Legend
AV-0.01 Scale: Not to Scale

C Connector Legend
AV-0.01 Scale: Not to Scale

Designed By: KMK
Drawn By: TK
Reviewed By: TK
Date Drawn: 08/18/2022
Scale: As Noted



Project Location:
12th & Arch Philadelphia, PA

Project:
OVERLOOK CONFERENCE ROOM

Drawing Title:
AV System Cover Sheet

Drawing Number:
AV-0.01

Audio Video System
Device Legend

DEVICE ID	DEVICE REF	DEVICE NAME	DEVICE DETAILS & SPECIFICATIONS	SCOPE NOTES	RACEWAY, CONDUIT & CABLE FILL REQUIREMENTS					
					Raceway #	Type	Size	Destination		
AVR-1		AV Equipment Rack	Manufacturer: Middle Atlantic Model: WRK-44-27 (qty 2) Back-Box Type: Back-Box Height: Back-Box Dims: Device Weight: Approx 650 Lbs	Description: AV Equipment Rack Location: IDF 100F Heat-Load: approx. 16000 BTU Note 1: Note 2: Note 3:	Conduit & Back-Box By: EC Device Furnished By: AVC Device Installed By: AVC Cable Furnished By: AVC Cable Installed By: AVC Electrical Power By: EC	1	Plenum	Plenum	Qty (2) CAT6	Fire Alarm Panel Mute Ckt Contact by EC Main Hall MDF (Behind Hall F)
			3	Single Model Fiber	Armored Cable Six Strand Single Mode Fiber					
CAM		Camera	Manufacturer: Crestron 1 Beyond Model: IV-CAM PTZ Back-Box Type: Recessed Back-Box Height: At Ceiling Back-Box Dims: Device Weight: Approx 12lbs	Description: PTZ Camera w/Tracking Location: As Shown In Plan Heat-Load: none Note 1: Provide Ceiling Mount Kit Note 2: Note 3:	Conduit & Back-Box By: EC Device Furnished By: AVC Device Installed By: AVC Cable Furnished By: AVC Cable Installed By: AVC Electrical Power By: none	1	Plenum Cable	Plenum Cable Qty(2) CAT6	AVR-1	
CRE1		Credenza Type 1	Manufacturer: By Millwork Contractor Model: Back-Box Type: See associated TFP Device Back-Box Height: See associated TFP Device Back-Box Dims: See associated TFP Device Device Weight: Approx 150lbs	Description: Millwork Credenza Location: As Shown In Plan Heat-Load: none Note 1: Note 2: Note 3:	Conduit & Back-Box By: See associated TFP Device Device Furnished By: See associated TFP Device Device Installed By: See associated TFP Device Cable Furnished By: See associated TFP Device Cable Installed By: See associated TFP Device Electrical Power By: See associated TFP Device					
CRE2		Credenza Type 2	Manufacturer: By Millwork Contractor Model: Back-Box Type: See associated TFP Device Back-Box Height: See associated TFP Device Back-Box Dims: See associated TFP Device Device Weight: Approx 150lbs	Description: Millwork Credenza Location: As Shown In Plan Heat-Load: none Note 1: Note 2: Note 3:	Conduit & Back-Box By: See associated TFP Device Device Furnished By: See associated TFP Device Device Installed By: See associated TFP Device Cable Furnished By: See associated TFP Device Cable Installed By: See associated TFP Device Electrical Power By: See associated TFP Device					
DIS98		98" Display	Manufacturer: ATS PRO Model: Taylorleds WS Series 1.2mm Back-Box Type: No Back Box Back-Box Height: See Elevation Detail Back-Box Dims: 2 Gang Device Weight: TBD	Description: 98" 4K LED Display Location: As shown in plan Heat-Load: Note 1: Custom Mounting Frame & Roll-About Cart Note 2: Refer to TFP plates for cable infrastructure Note 3:	Conduit & Back-Box By: Device Furnished By: Device Installed By: Cable Furnished By: Cable Installed By: Electrical Power By:					
PT8		Poke Thru 8"	Manufacturer: Legrand Model: eVOLUTION sERIES 8" Back-Box Type: Recessed Back-Box Height: Floor Back-Box Dims: 8" Diameter Device Weight: Approx 8 lbs	Description: 8" Poke Thru Location: As Shown In Plan Heat-Load: none Note 1: Qty (2) Duplex with Dual USB Charging Port Note 2: Qty (1) # Gang AV Plate Note 3:	Conduit & Back-Box By: EC Device Furnished By: EC Device Installed By: EC Cable Furnished By: AVC Cable Installed By: AVC Electrical Power By: EC	1	EMT Stub to Ceiling Below 1"		Qty (4) A1	AVR-1
						2	EMT Stub to Ceiling Below 1"		Qty (4) CAT6	AVR-1
TFP-1	A AV4.01	Tech Facility Plate -1	Manufacturer: RCI Model: KMK-597-AV-4.01-B Back-Box Type: See Note 1 at Right Back-Box Height: Refer to Sheet AV4.00 Back-Box Dims: 12" high x 18" wide x 6" Device Weight: Approx 10 lbs	Description: Tech Facility Plate i/o Location: As shown in plan Heat-Load: Note 1: Surface Box Mounted within CS-3x2 Credenza Note 2: Box CANNOT be installed until credenza is available. Note 3:	Conduit & Back-Box By: EC Device Furnished By: AVC Device Installed By: AVC Cable Furnished By: AVC Cable Installed By: AVC Electrical Power By: EC	1	EMT	1-1/4"	Qty (12) A1	AVR1
						2	EMT	1-1/4"	Qty (12) CAT6	AVR1
						3	EMT	1-1/4"	Qty (1) FO6, Qty (1) MM6	AVR1
TFP-2	B AV4.01	Tech Facility Plate -2	Manufacturer: RCI Model: KMK-597-AV-4.01-B Back-Box Type: See Note 1 at Right Back-Box Height: Refer to Sheet AV4.00 Back-Box Dims: 12" high x 18" wide x 6" Device Weight: Approx 10 lbs	Description: Tech Facility Plate i/o Location: As shown in plan Heat-Load: Note 1: Surface Box Mounted within CS-3x2 Credenza Note 2: Box CANNOT be installed until credenza is available. Note 3:	Conduit & Back-Box By: EC Device Furnished By: AVC Device Installed By: AVC Cable Furnished By: AVC Cable Installed By: AVC Electrical Power By: EC	1	EMT	1-1/4"	Qty (12) A1	AVR1
						2	EMT	1-1/4"	Qty (12) CAT6	AVR1
						3	EMT	1-1/4"	Qty (1) FO6, Qty (1) MM6	AVR1
TFP-3	C AV4.01	Tech Facility Plate -3	Manufacturer: RCI Model: KMK-597-AV-4.01-C Back-Box Type: See Note 1 at Right Back-Box Height: Refer to Sheet AV4.00 Back-Box Dims: 12" high x 18" wide x 6" Device Weight: Approx 10 lbs	Description: Tech Facility Plate i/o Location: As shown in plan Heat-Load: Note 1: Surface Box Mounted within CS-3x2 Credenza Note 2: Box CANNOT be installed until credenza is available. Note 3:	Conduit & Back-Box By: EC Device Furnished By: AVC Device Installed By: AVC Cable Furnished By: AVC Cable Installed By: AVC Electrical Power By: EC	1	EMT	1-1/4"	Qty (12) A1	AVR1
						2	EMT	1-1/4"	Qty (12) CAT6	AVR1
						3	EMT	1-1/4"	Qty (1) FO6, Qty (1) MM6	AVR1
TFP-4	D AV4.01	Tech Facility Plate -4	Manufacturer: RCI Model: KMK-597-AV-4.01-D Back-Box Type: See Note 1 at Right Back-Box Height: Refer to Sheet AV4.00 Back-Box Dims: 12" high x 18" wide x 6" Device Weight: Approx 10 lbs	Description: Tech Facility Plate i/o Location: As shown in plan Heat-Load: Note 1: Surface Box Mounted within CS-3x2 Credenza Note 2: Box CANNOT be installed until credenza is available. Note 3:	Conduit & Back-Box By: EC Device Furnished By: AVC Device Installed By: AVC Cable Furnished By: AVC Cable Installed By: AVC Electrical Power By: EC	1	EMT	1-1/4"	Qty (12) A1	AVR1
						2	EMT	1-1/4"	Qty (12) CAT6	AVR1
						3	EMT	1-1/4"	Qty (1) FO6, Qty (1) MM6	AVR1
TFP-5	E AV4.01	Tech Facility Plate -5	Manufacturer: RCI Model: KMK-597-AV-4.01-E Back-Box Type: See Note 1 at Right Back-Box Height: Refer to Sheet AV4.00 Back-Box Dims: 12" high x 18" wide x 6" Device Weight: Approx 10 lbs	Description: Tech Facility Plate i/o Location: As shown in plan Heat-Load: Note 1: Surface Box Mounted within CS-3x2 Credenza Note 2: Box CANNOT be installed until credenza is available. Note 3:	Conduit & Back-Box By: EC Device Furnished By: AVC Device Installed By: AVC Cable Furnished By: AVC Cable Installed By: AVC Electrical Power By: EC	1	EMT	1-1/4"	Qty (12) A1	AVR1
						2	EMT	1-1/4"	Qty (12) CAT6	AVR1
						3	EMT	1-1/4"	Qty (1) FO6, Qty (1) MM6	AVR1
TFP-6	F AV4.01	Tech Facility Plate -6	Manufacturer: RCI Model: KMK-597-AV-4.01-F Back-Box Type: See Note 1 at Right Back-Box Height: Refer to Sheet AV4.00 Back-Box Dims: 12" high x 18" wide x 6" Device Weight: Approx 10 lbs	Description: Tech Facility Plate i/o Location: As shown in plan Heat-Load: Note 1: Surface Box Mounted within CS-3x2 Credenza Note 2: Box CANNOT be installed until credenza is available. Note 3:	Conduit & Back-Box By: EC Device Furnished By: AVC Device Installed By: AVC Cable Furnished By: AVC Cable Installed By: AVC Electrical Power By: EC	1	EMT	1-1/4"	Qty (12) A1	AVR1
						2	EMT	1-1/4"	Qty (12) CAT6	AVR1
						3	EMT	1-1/4"	Qty (1) FO6, Qty (1) MM6	AVR1
TP-11		Touch Panel 11"	Manufacturer: QSC Model: TSC-116w-G2 Back-Box Type: Flush Back-Box Height: Switch Height Back-Box Dims: 2 Gang Device Weight: Approx 8 lbs	Description: 11" Touch Panel Wall Mounted Location: As shown in plan Heat-Load: Note 1: Note 2: Note 3:	Conduit & Back-Box By: EC Device Furnished By: AVC Device Installed By: AVC Cable Furnished By: AVC Cable Installed By: AVC Electrical Power By: None	1	EMT Stub to Ceiling	1"	Qty(1) CAT6	AVR1
E5C		Empty 5" Conduit	Manufacturer: Building Standard Model: 5" Conduit with Nylon Bushing Back-Box Type: No Back Box Back-Box Height: Within Credenza Back-Box Dims: 5" Diameter Device Weight:	Description: 5" Empty Conduit w/Pull Line Location: As shown in plan Heat-Load: Note 1: Note 2: Note 3:	Conduit & Back-Box By: EC Device Furnished By: EC Device Installed By: EC Cable Furnished By: EC Cable Installed By: Electrical Power By:	1	EMT	5"	Nylon Pull String	AVR1

A AV Systems
Device Legends Floor Plan
AV-0.02 Scale: Not to Scale

B AV Systems
Device Legends Ceiling Plan
AV-0.02 Scale: Not to Scale



Rev#:	Date:	Description:	By:
1	08/18/2022	Review/Comment	TWK
2	10/10/2022	Released for Bid	TWK
3	05/08/2023	AV Bulletin 1	TWK

Designed By:	KMK
Drawn By:	TK
Reviewed By:	TK
Date Drawn:	08/18/2022
Scale:	As Noted



Project Location:
12th & Arch Philadelphia, PA

Project:
OVERLOOK CONFERENCE ROOM

Drawing Title:
AV System Device Legend

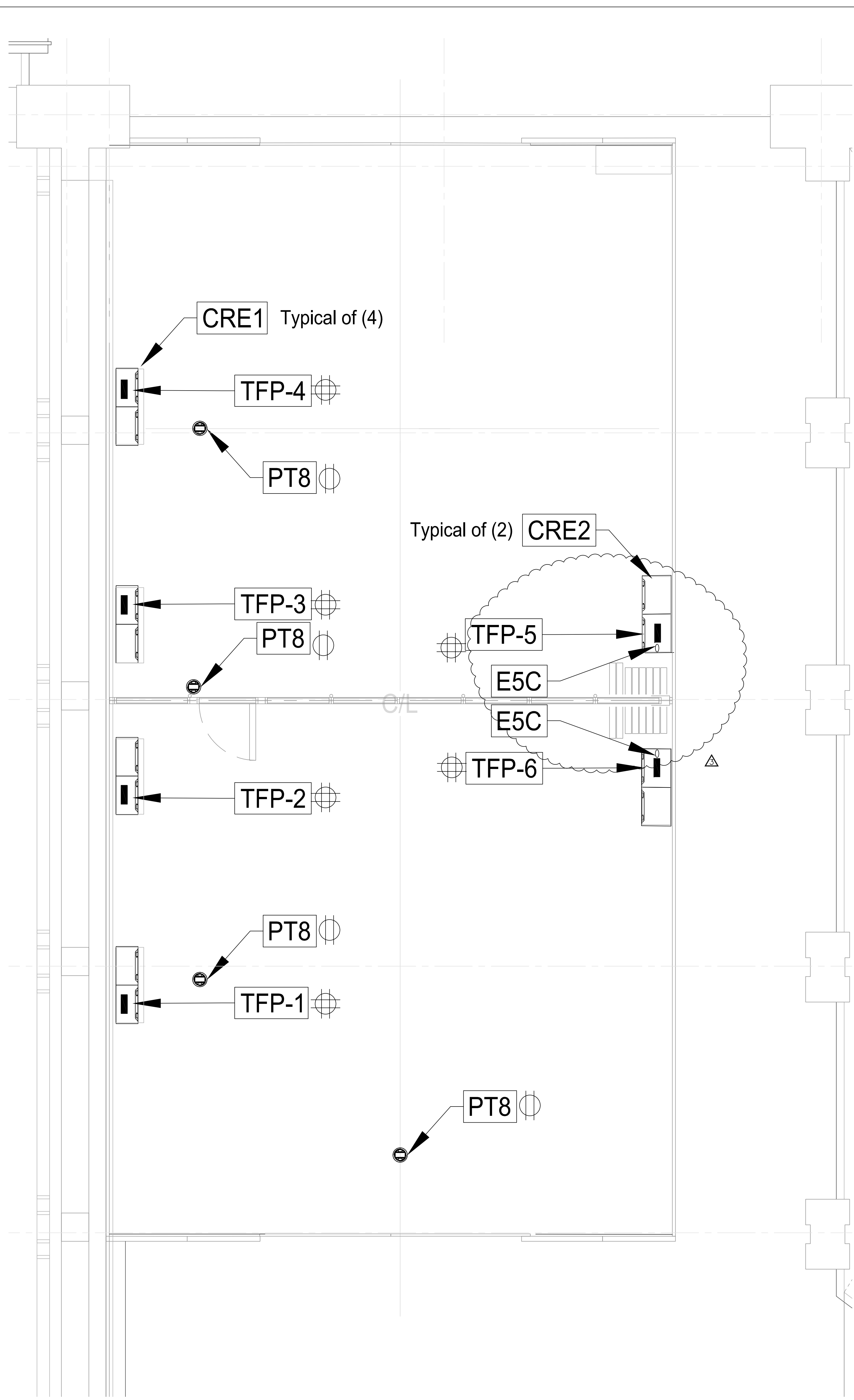
Drawing Number:
AV-0.02

Audio Video System
Device Legend

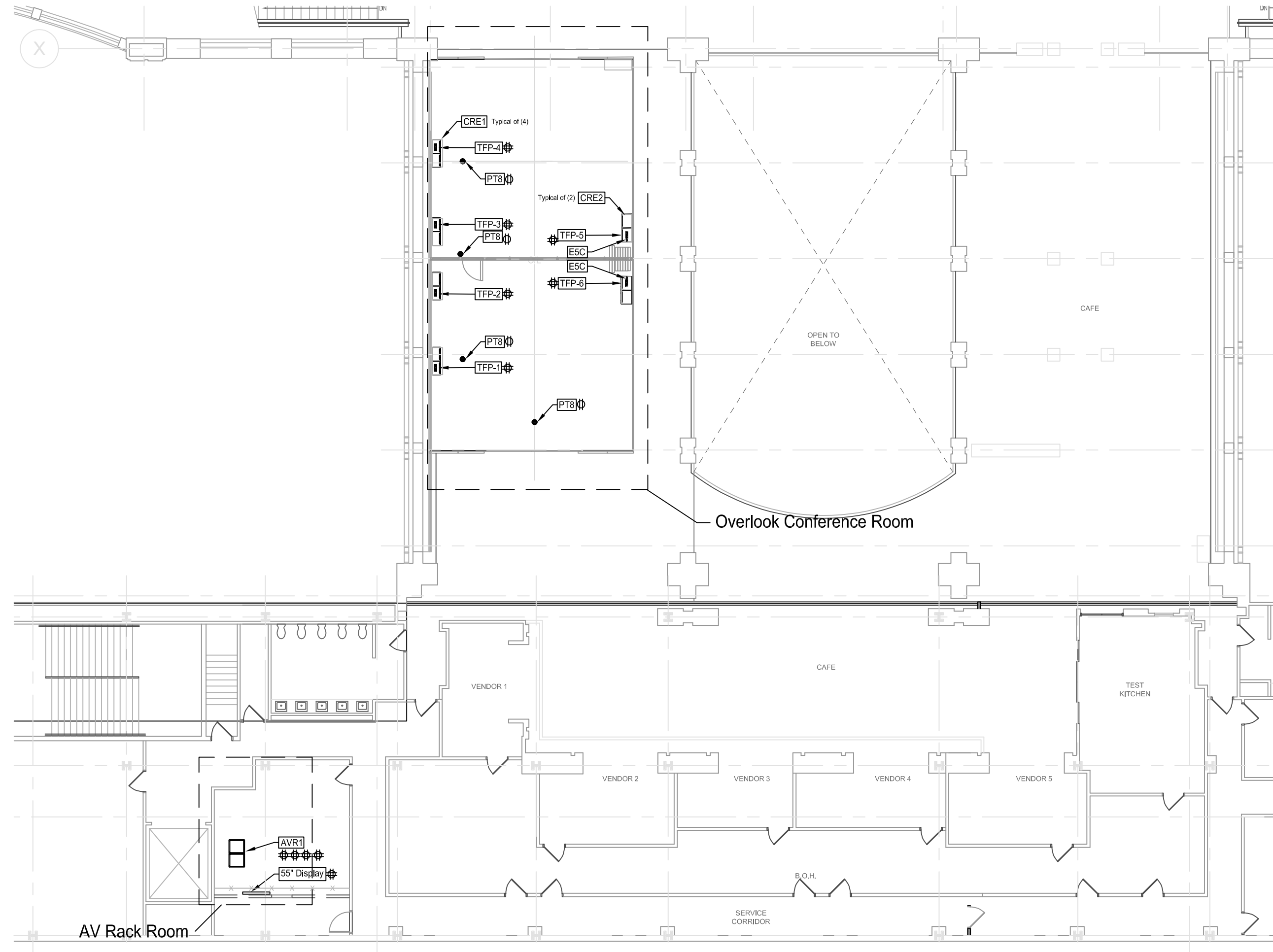
DEVICE ID	DEVICE REF	DEVICE NAME	DEVICE DETAILS & SPECIFICATIONS	SCOPE NOTES	RACEWAY, CONDUIT & CABLE FILL REQUIREMENTS					
					Raceway #	Type	Size	Destination		
S12		Speaker Type 12	Manufacturer: JBL Model: Control 322C Back-Box Type: Recessed Back-Box Height: Ceiling Back-Box Dims: 23.1" X 18.2" Device Weight: 22 lbs	Description: Two Way Coaxial 12" Ceiling Speaker Location: As shown in plan Heat-Load: Note 1: Zone speakers as shown in plan Note 2: JBL MTC-300BB12 Back Box, JBL MTC 300SG12 Grille Note 3:	Conduit & Back-Box By: EC Device Furnished By: AVC Device Installed By: AVC Cable Furnished By: AVC Cable Installed By: AVC Electrical Power By: EC	1	Plenum Cable		Qty(1) S14 per speaker, refer to single line diagrams for home run information	AVR1
SUB1		Subwoofer Type 1	Manufacturer: JBL Model: 2206H Back-Box Type: Recessed Back-Box Height: Ceiling Back-Box Dims: 23.1" X 18.2" Device Weight: 15 lb	Description: Subwoofer Location: As shown in plan Heat-Load: Note 1: Zone Sub Woofers as shown in plan Note 2: JBL MTC-300BB12 Back Box, JBL MTC 300SG12 Grille Note 3:	Conduit & Back-Box By: EC Device Furnished By: AVC Device Installed By: AVC Cable Furnished By: AVC Cable Installed By: AVC Electrical Power By: EC	1	Plenum Cable		Qty(1) S14 per speaker, refer to single line diagrams for home run information	AVR1
MIC1		Array Microphone	Manufacturer: Shure Model: MXA920 Back-Box Type: Recessed Back-Box Height: Ceiling Back-Box Dims: Device Weight: TBD	Description: Digital Steering Array Microphone Location: As shown in plan Heat-Load: Note 1: Note 2: Note 3:	Conduit & Back-Box By: EC Device Furnished By: AVC Device Installed By: AVC Cable Furnished By: AVC Cable Installed By: AVC Electrical Power By: EC	1	Plenum Cable		Qty(1) CAT6	AVR1



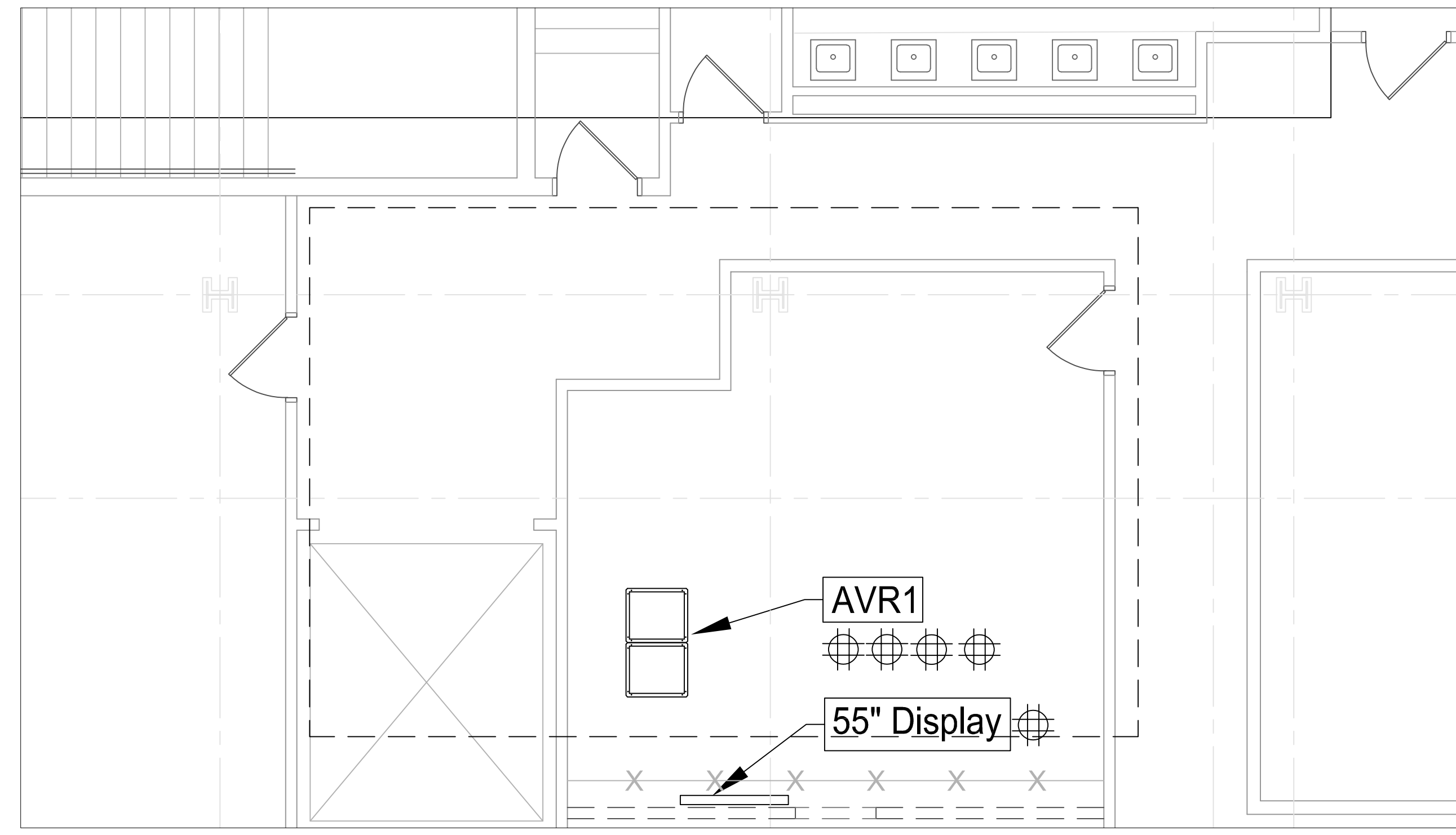
ACOUSTICS - AUDIO VIDEO - TECHNOLOGY INFRASTRUCTURE
Consulting & Design Since 1971
KMK Technologies LLC Glassboro, New Jersey
www.KMKINC.com Telephone: 215-690-3187



A
AV-1.01 AV Systems
Device Locations In Plan
Scale: 3/8" = 1' when viewed on 30" x 42" sheet



B
AV-1.01 Overall Plan
Scale: Not To Scale



2
AV-1.01 Conference Mode - Open Office Plan
Locations in Plan Drawings
Scale: 1/4" = 1' when viewed on 30" x 42" sheet

Rev#:	Date:	Description:	By:
1	08/18/2022	Review/Comment	TWK
2	10/10/2022	Released for Bid	TWK
3	05/08/2023	AV Bulletin 1	TWK

Designed By:	KMK
Drawn By:	TK
Reviewed By:	TK
Date Drawn:	08/18/2022
Scale:	As Noted



Project Location:
12th & Arch Philadelphia, PA

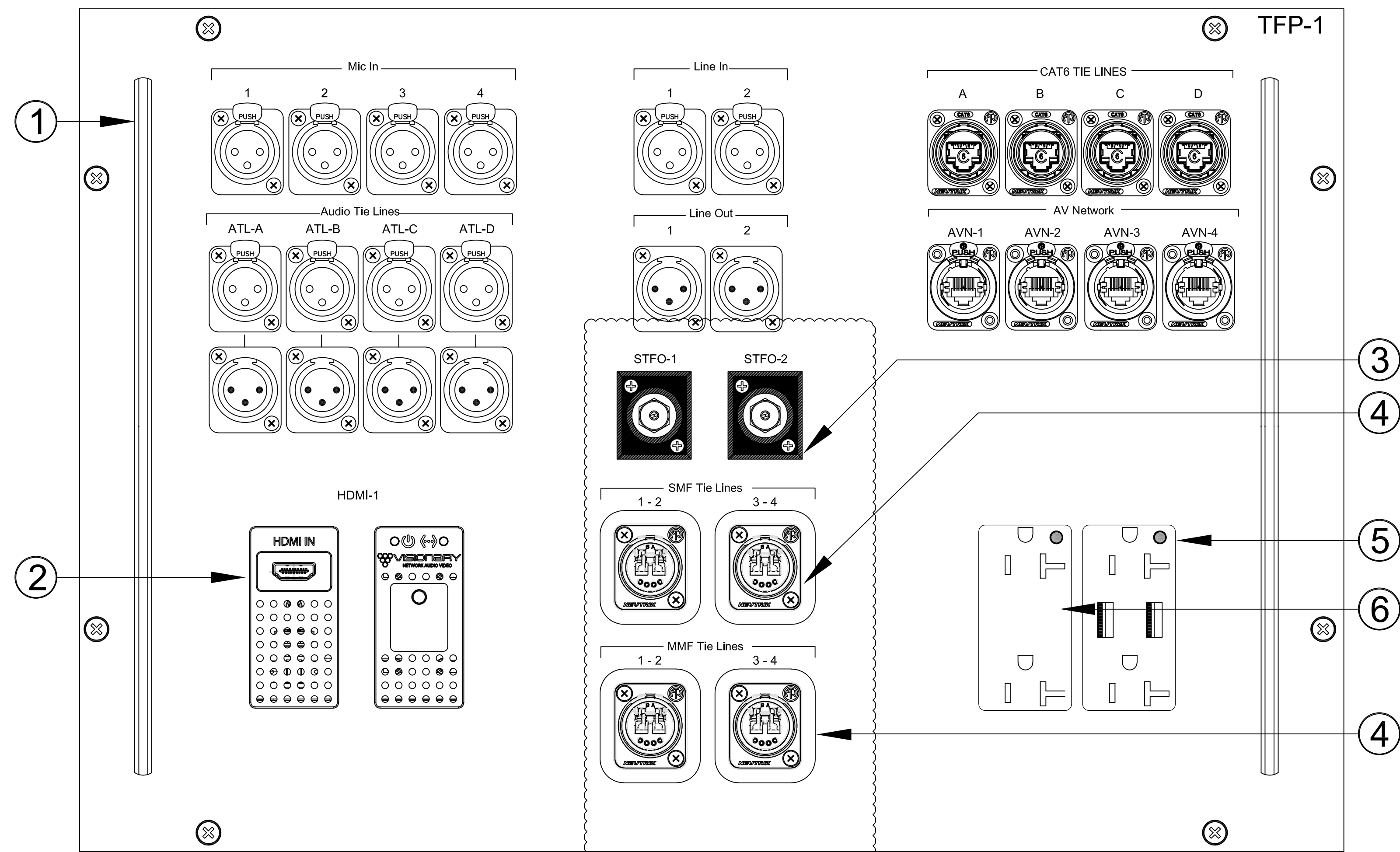
Project:
OVERLOOK CONFERENCE ROOM

Drawing Title:
AV System Device Locations In Plan

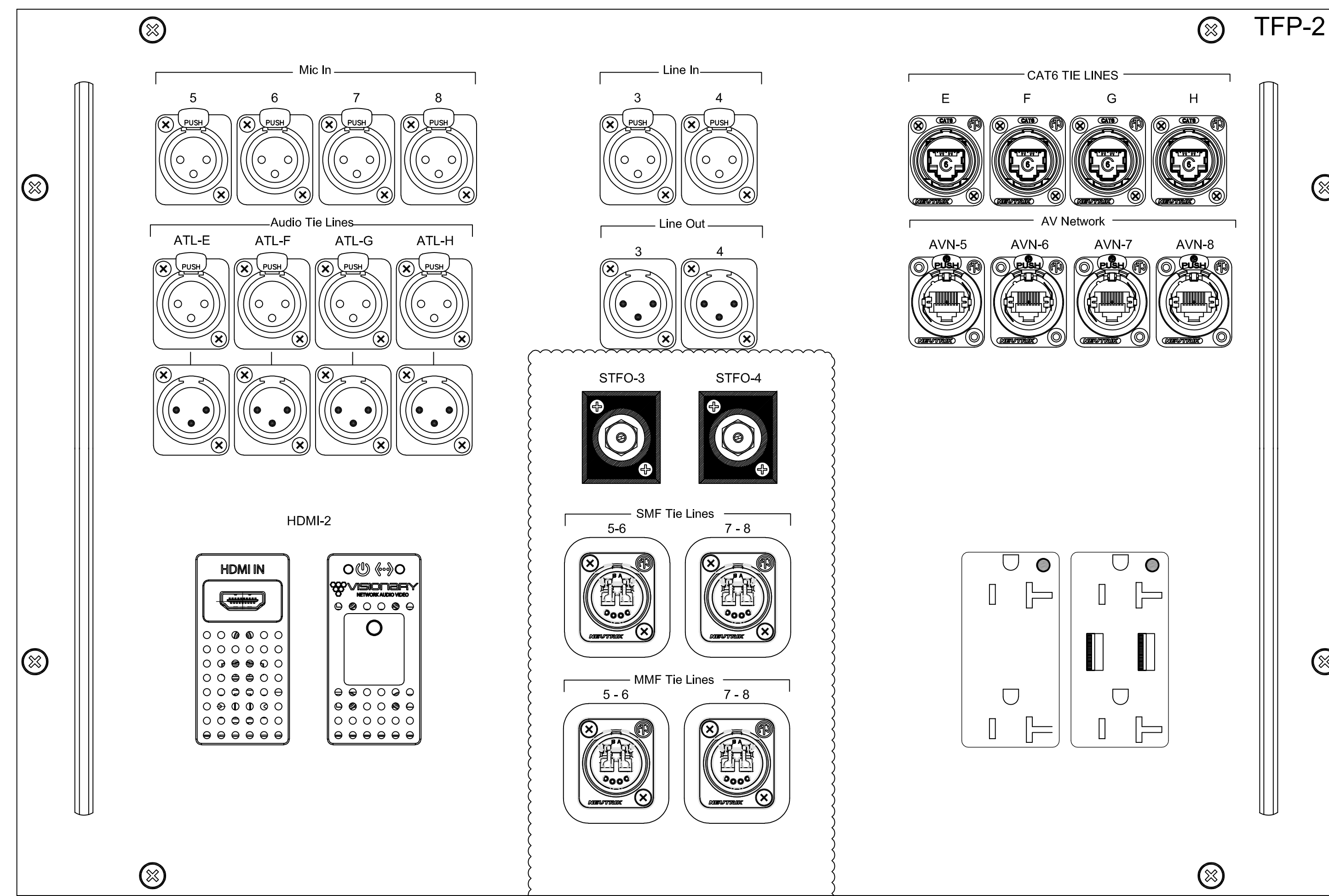
Drawing Number:
AV-1.01



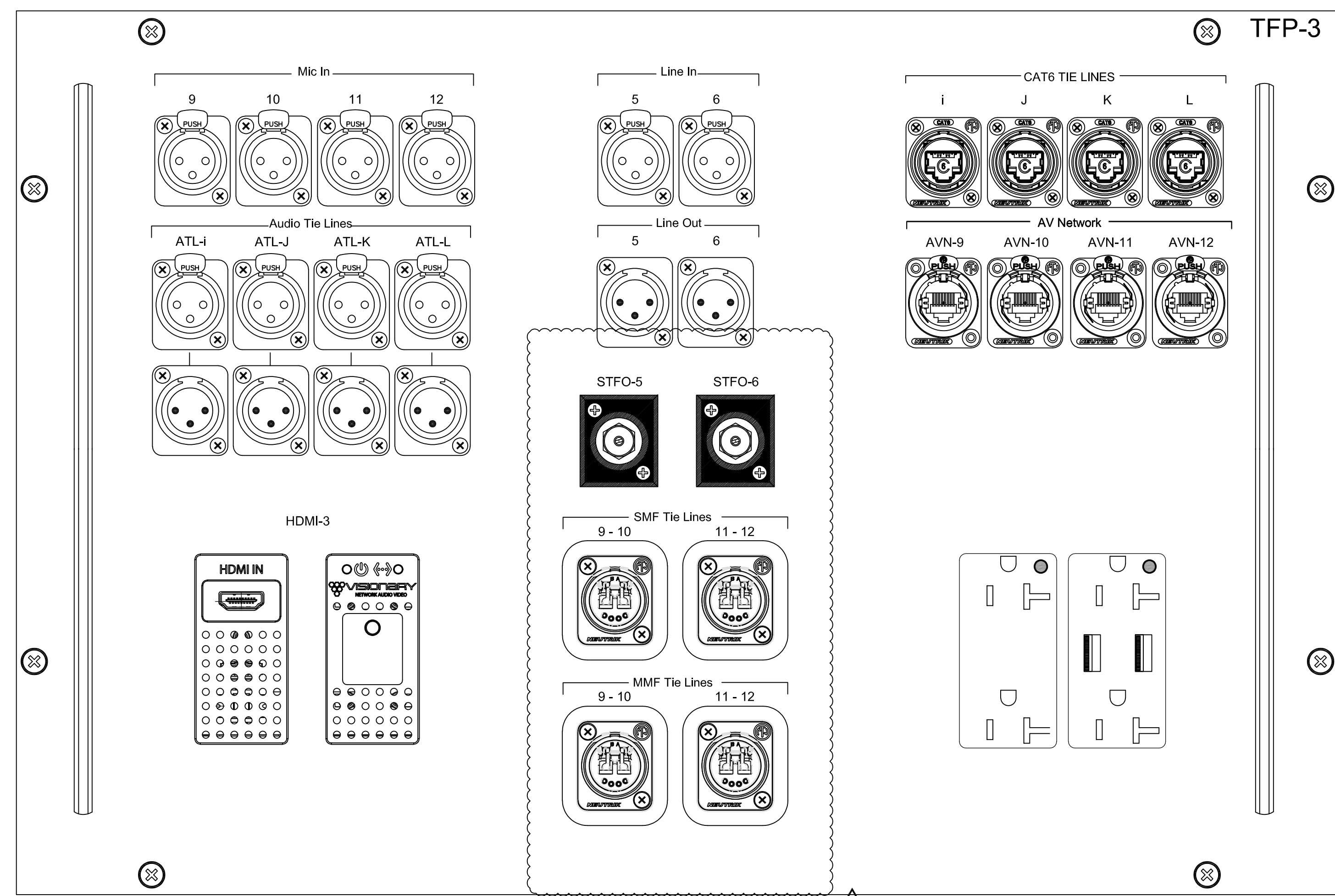
ACOUSTICS - AUDIO VIDEO - TECHNOLOGY - INFRASTRUCTURE
Consulting & Design Since 1971
KMK Technologies LLC Glassboro, New Jersey
www.KMKINC.com Telephone: 215-990-3187
An NVIS Company



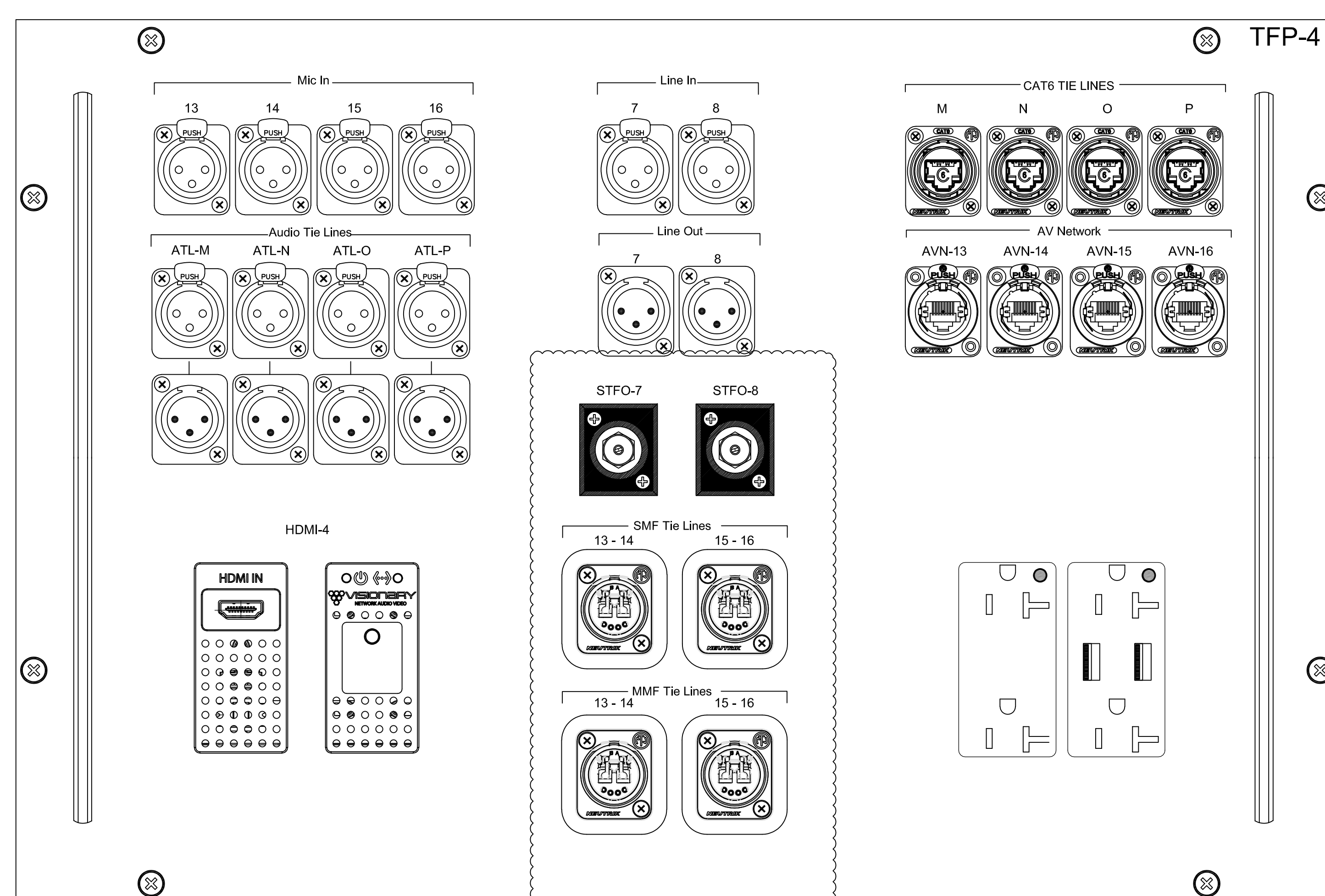
A TFP-1
RCI KMK-597-AV4.01-A
AV4.01 Scale: 1/2" = 1" when viewed on 30" by 42" sheet



B TFP-2
RCI KMK-597-AV4.01-B
AV4.01 Scale: 1/2" = 1" when viewed on 30" by 42" sheet



C TFP-3
RCI KMK-597-AV4.01-C
AV4.01 Scale: 1/2" = 1" when viewed on 30" by 42" sheet



D TFP-4
RCI KMK-597-AV4.01-D
AV4.01 Scale: 1/2" = 1" when viewed on 30" by 42" sheet

AV4.01 Notes:

- 1 3/8" Diameter Black Lacing Bar with 1.25" Standoff
- 2 Visionary Solutions H.264 Duet Encoder
- 3 Senco or equivalent ST Fiber Optic Connector with Cover
- 4 Neutrik Opticon Duplex LC Connector
- 5 Hubbel USB8300A5BK 20A/125V Duplex Receptacle w/USB and LED Indicator
- 6 Hubbel 2182BKL Hospital Grade 20A/125V Receptacle with LED Indicator
- 7 Panel finish: Black brushed aluminum with engraved & filled white lettering as shown.
- 8 Notes 1 thru 7 above apply to all panels shown on this sheet.

E Sheet AV4.01 Notes
AV4.01 Scale: No Scale

Rev#:	Date:	Description:	By:
1	08/18/2022	Review/Comment	TWK
2	10/10/2022	Released for Bid	TWK
3	05/08/2023	AV Bulletin 1	TWK

Designed By:	KMK
Drawn By:	TK
Reviewed By:	TK
Date Drawn:	08/18/2022
Scale:	As Noted

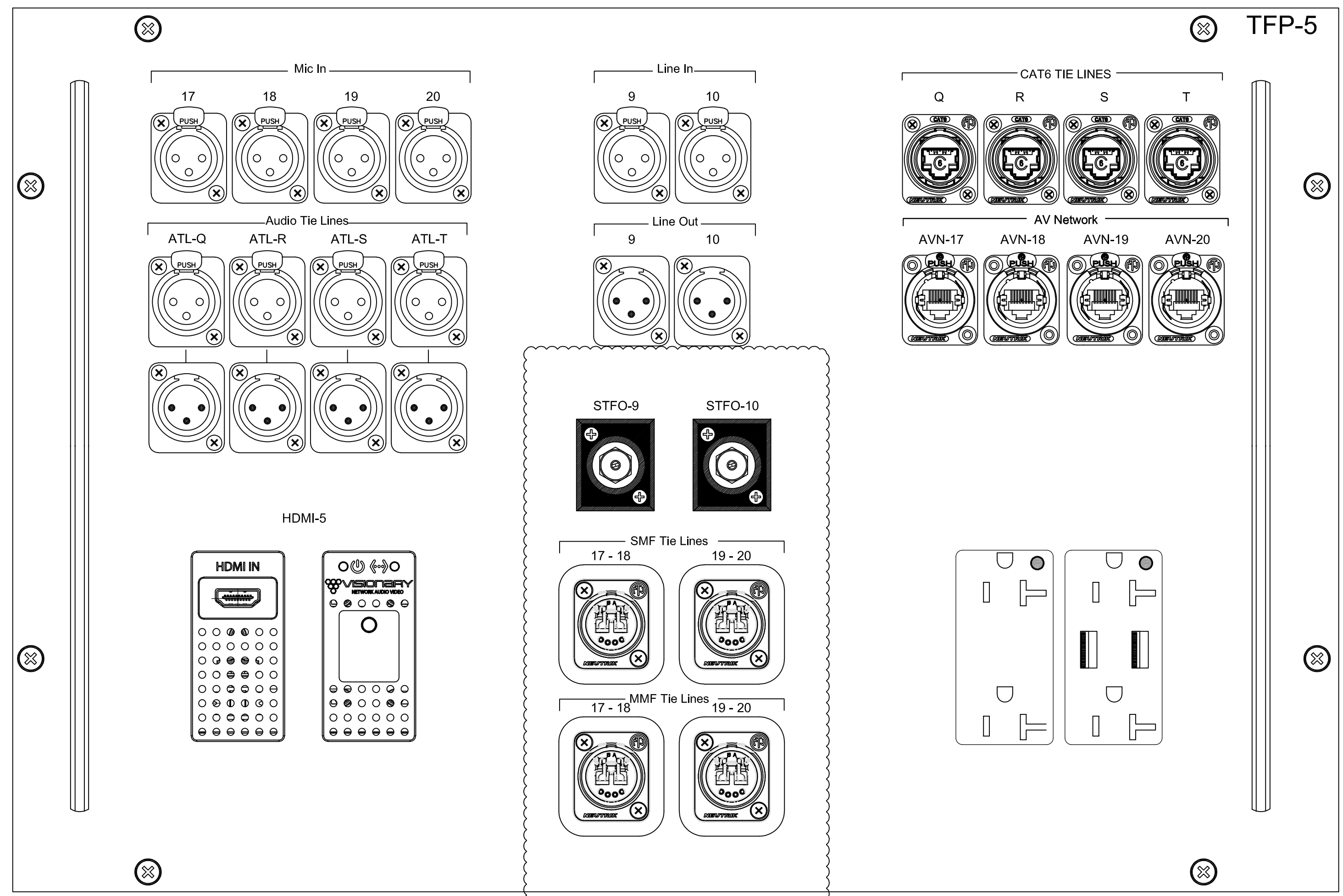


Project Location:
12th & Arch Philadelphia, PA

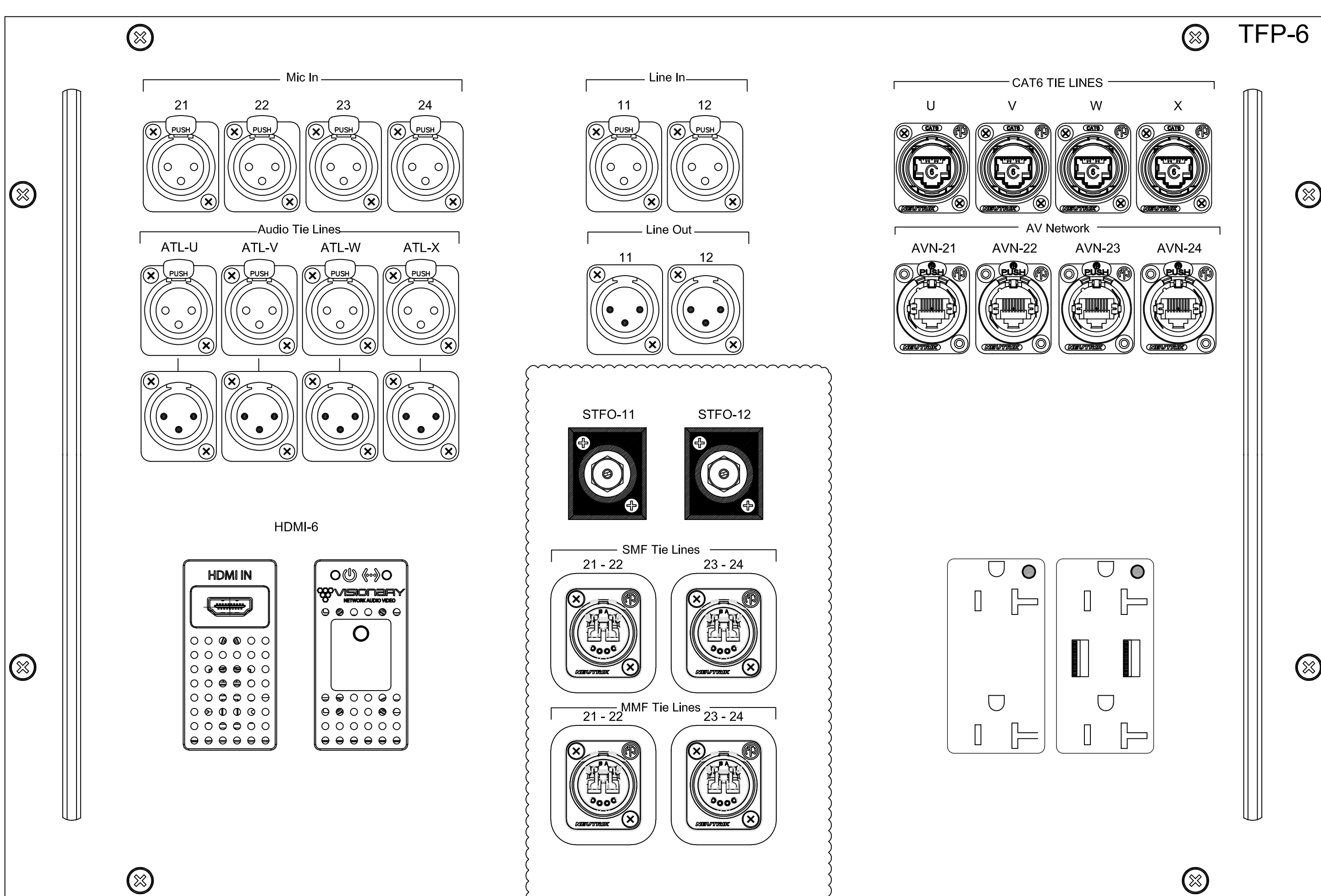
Project:
OVERLOOK CONFERENCE ROOM

Drawing Title:
AV Plates & Panel Details -
Part 1

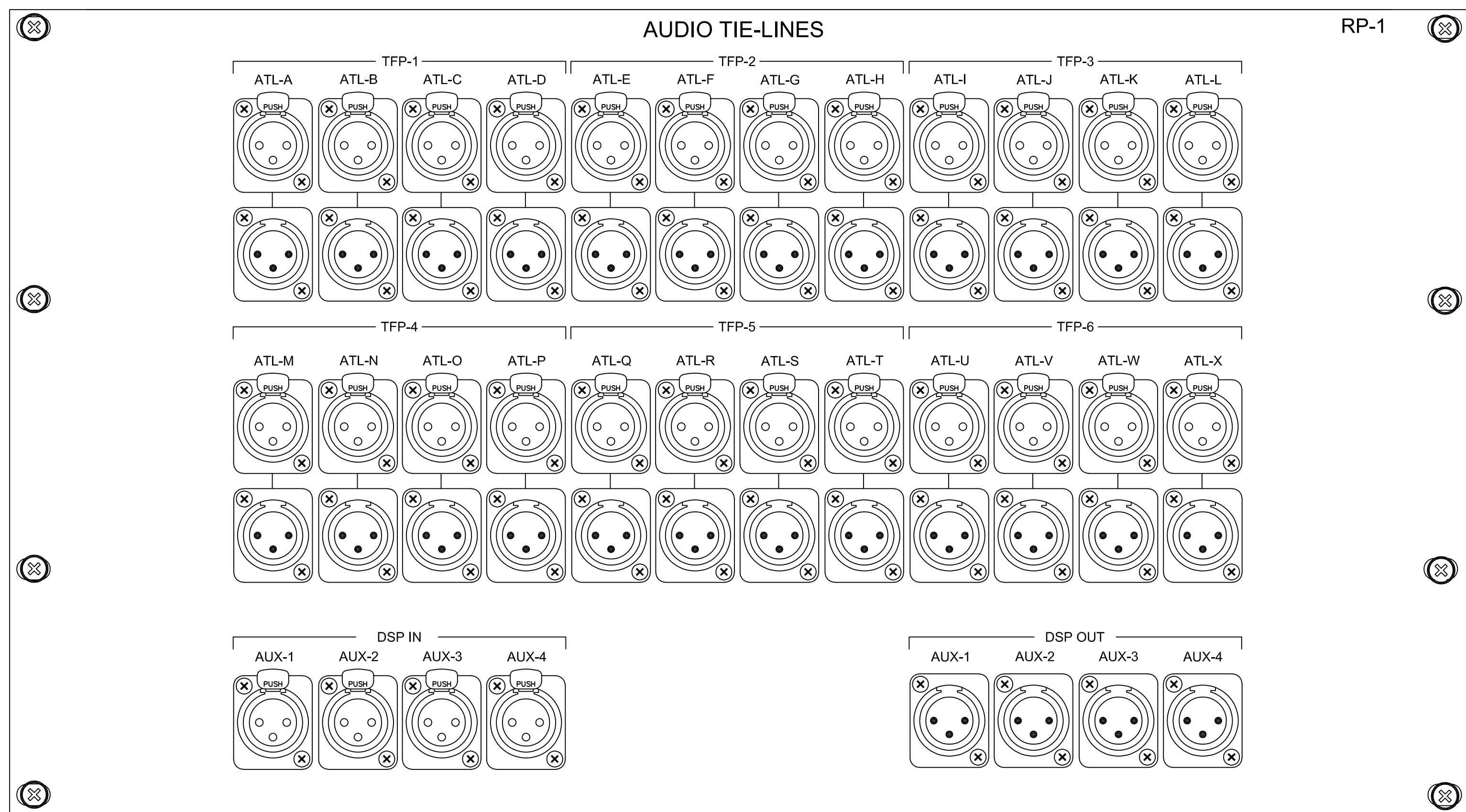
Drawing Number:
AV4.01



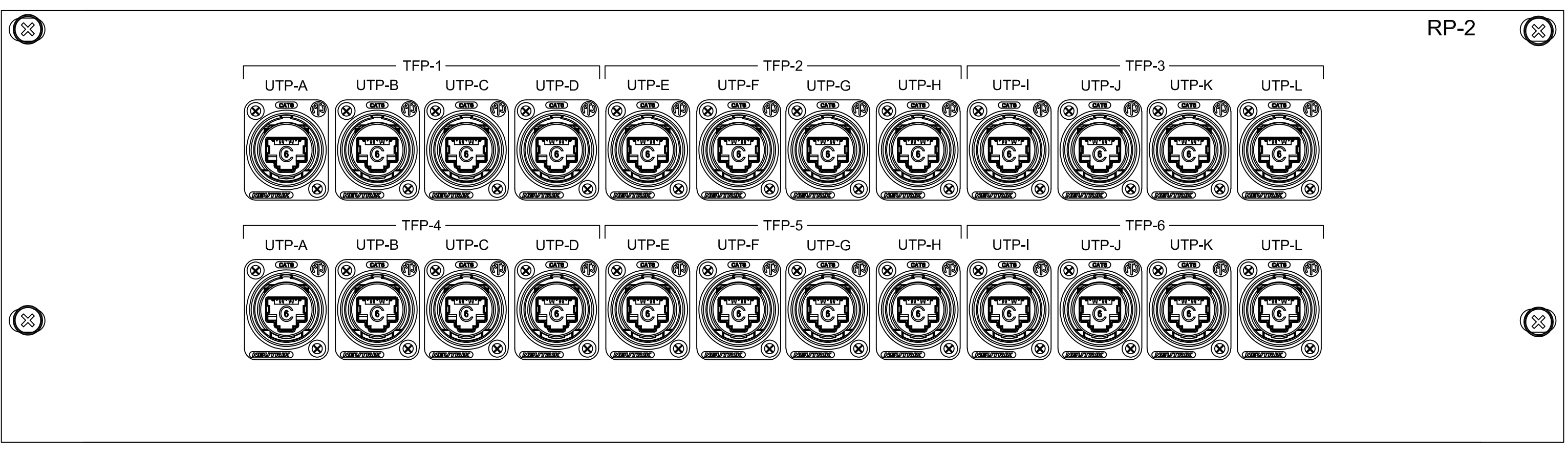
A TFP-5
RCI KMK-597-AV4.02-A
AV4.02 Scale: 1/2" = 1" when viewed on 30" by 42" sheet



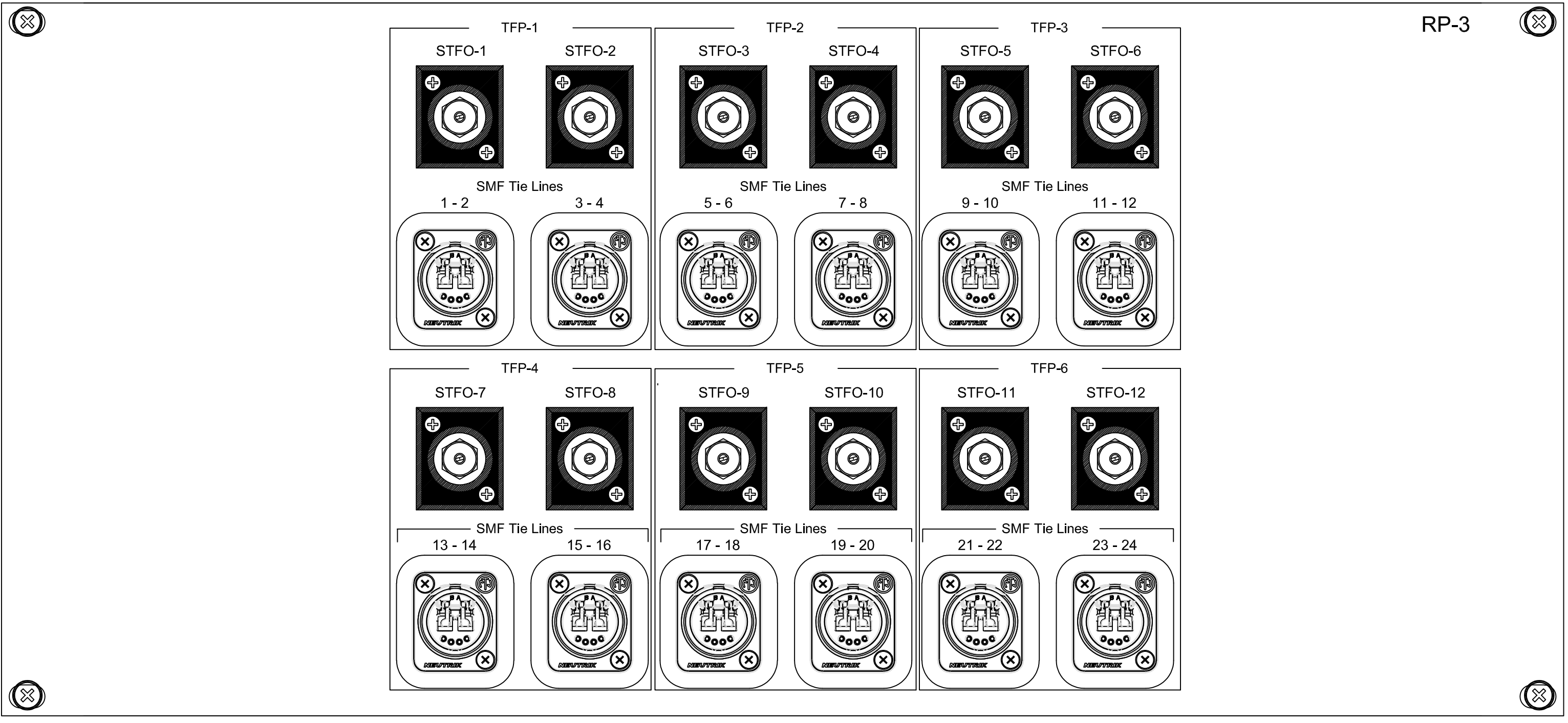
B TFP-6
RCI KMK-597-AV4.02-B
AV4.02 Scale: 1/2" = 1" when viewed on 30" by 42" sheet



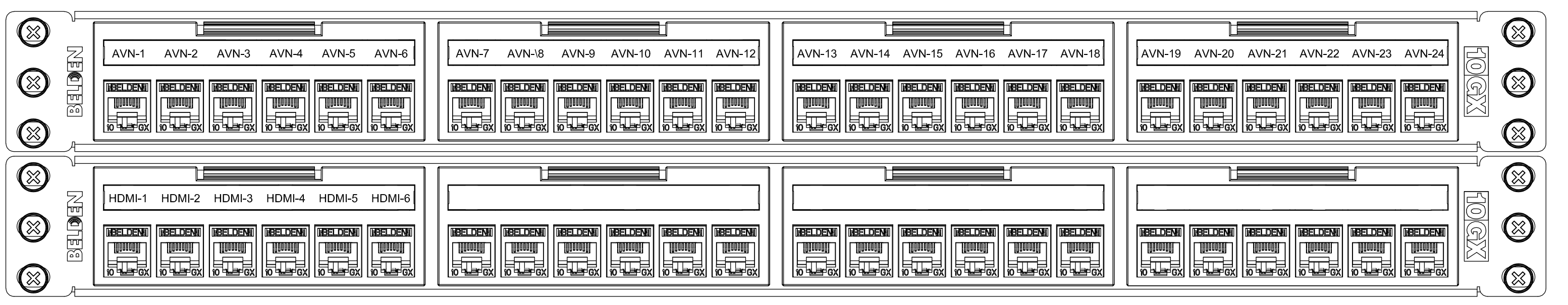
C RP-1
RCI KMK-597-AV4.02-C
AV4.02 Scale: 1/2" = 1" when viewed on 30" by 42" sheet



D RP-2
RCI KMK-597-AV4.02-D
AV4.02 Scale: 1/2" = 1" when viewed on 30" by 42" sheet



D RP-3
RCI KMK-597-AV4.02-D
AV4.02 Scale: 1/2" = 1" when viewed on 30" by 42" sheet



F Qty (2) Belden 24 Port Patch Bay
AV4.02 Scale: 1/2" = 1" when viewed on 30" by 42" sheet



Rev#:	Date:	Description:	By:
1	08/18/2022	Review/Comment	TWK
2	10/10/2022	Released for Bid	TWK
3	05/08/2023	AV Bulletin 1	TWK

Designed By:	KMK
Drawn By:	TK
Reviewed By:	TK
Date Drawn:	08/18/2022
Scale:	As Noted



Project Location:
12th & Arch Philadelphia, PA

Project:
OVERLOOK CONFERENCE ROOM

Drawing Title:
AV Plates & Panel Details -
Part 2

Drawing Number:
AV4.02



ACOUSTICS - AUDIO VIDEO - TECHNOLOGY INFRASTRUCTURE
 Consulting & Design Since 1971
 KMK Technologies LLC Glassboro, New Jersey
 www.kmkinc.com Telephone: 215-990-3187

Rev#:	Date:	Description:	By:
3	05/08/2023	AV Bulletin 1	TWK

Designed By: KMK
 Drawn By: TK
 Reviewed By: TK
 Date Drawn: 08/18/2022
 Scale: As Noted

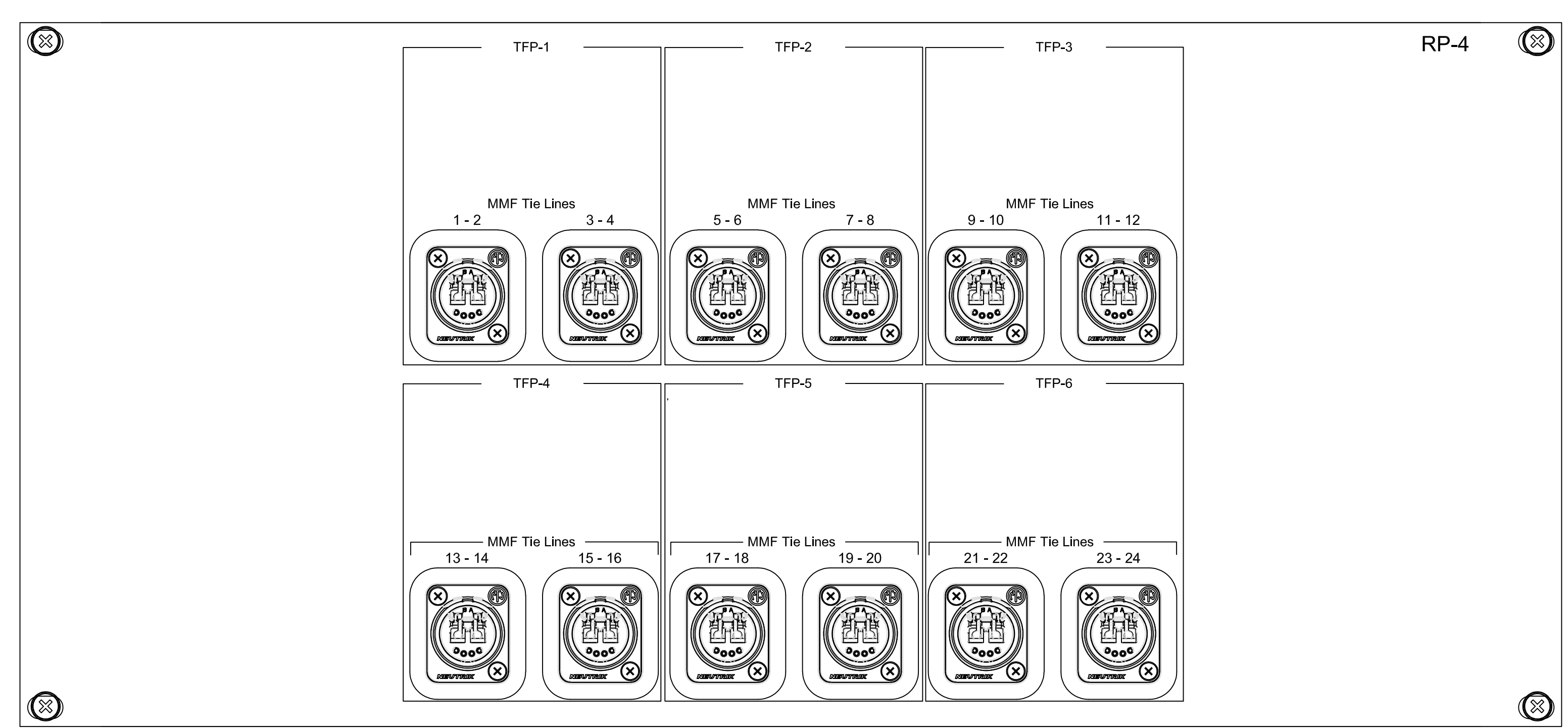


Project Location:
 12th & Arch Philadelphia, PA

Project:
 OVERLOOK CONFERENCE ROOM

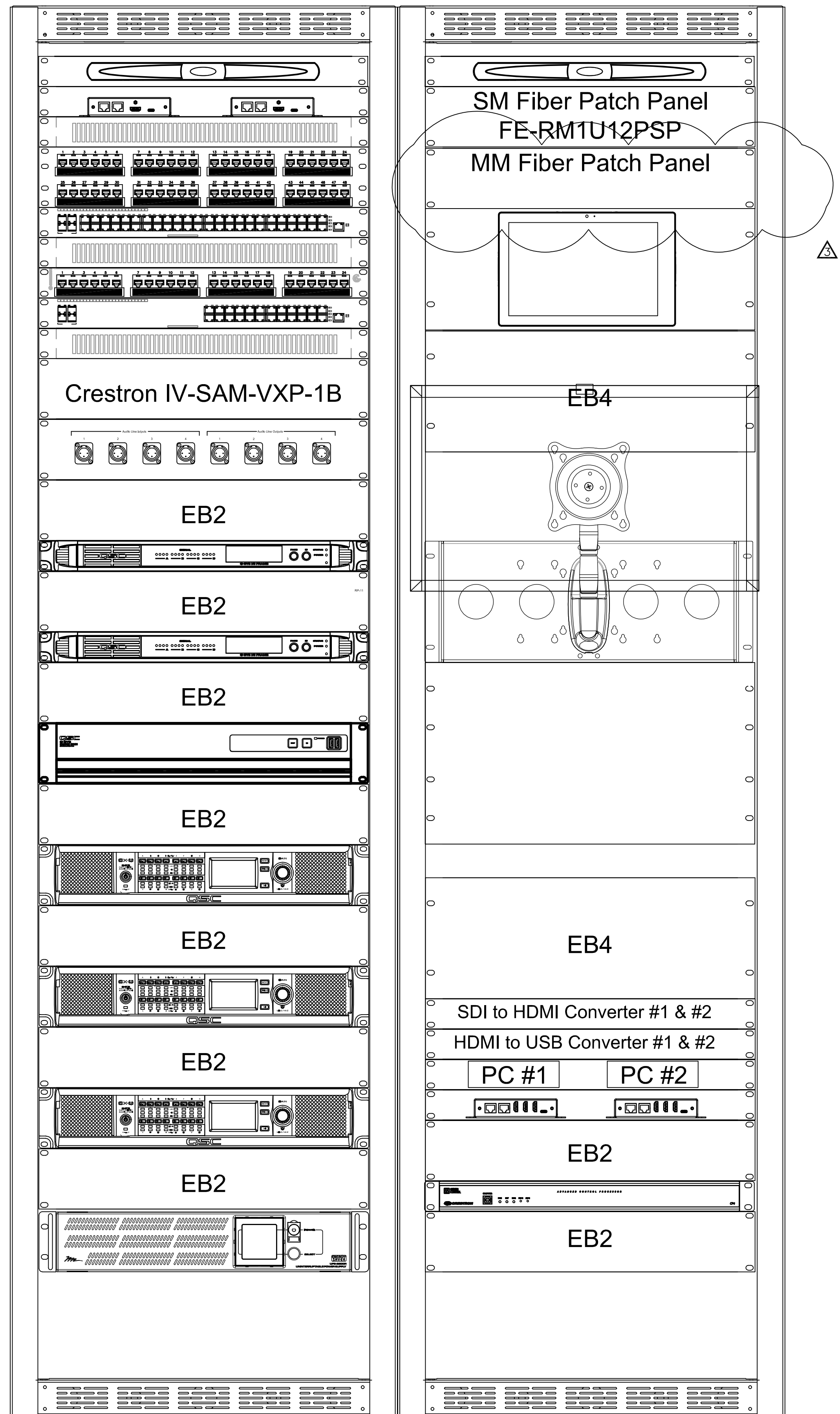
Drawing Title:
 AV Plates & Panel Details -
 Part 3

Drawing Number:
AV4.03




RP-4
 RCI KMK-597-AV4.03-A
 AV4.03 Scale: 1/2" = 1" when viewed on 30" by 42" sheet

RACK UNITS	HEIGHT INCHES
44	77.00
43	75.25
42	73.50
41	71.75
40	70.00
39	68.25
38	66.50
37	64.75
36	63.00
35	61.25
34	59.50
33	57.75
32	56.00
31	54.25
30	52.50
29	50.75
28	49.00
27	47.25
26	45.50
25	43.75
24	42.00
23	40.25
22	38.50
21	36.75
20	35.00
19	33.25
18	31.50
17	29.75
16	28.00
15	26.25
14	24.50
13	22.75
12	21.00
11	19.25
10	17.50
9	15.75
8	14.00
7	12.25
6	10.50
5	8.75
4	7.00
3	5.25
2	3.50
1	1.75
0	0.00



FRONT VIEW

 AV Systems Rack Elevation Diagram
 AVR1 PCCA Overlook Conference Room
 AV-9.01 Scale : As Noted



ACOUSTICS - AUDIO VIDEO - TECHNOLOGY INFRASTRUCTURE
 Consulting & Design Since 1971
 KMK Technologies LLC Glassboro, New Jersey
 www.KMKINC.com Telephone: 215-690-3187
 An NVS Company

Rev#:	Date:	Description:	By:
1	08/18/2022	Review/Comment	TWK
2	10/10/2022	Released for Bid	TWK
3	05/08/2023	AV Bulletin 1	TWK

Designed By:	KMK
Drawn By:	TK
Reviewed By:	TK
Date Drawn:	08/18/2022
Scale:	As Noted



Project Location:
 12th & Arch Philadelphia, PA

Project:
 OVERLOOK CONFERENCE ROOM

Drawing Title:
 AV System Rack
 Elevation Diagram - Part 1

Drawing Number:
AV9.01